

U.S. PUBLIC LAND SURVEY MONUMENT RECORD

Instructions: This record shall show the location of the corner and shall include all of the following nine elements (a through i).

(a) Identify the corner by reference to the U.S. public land survey system.

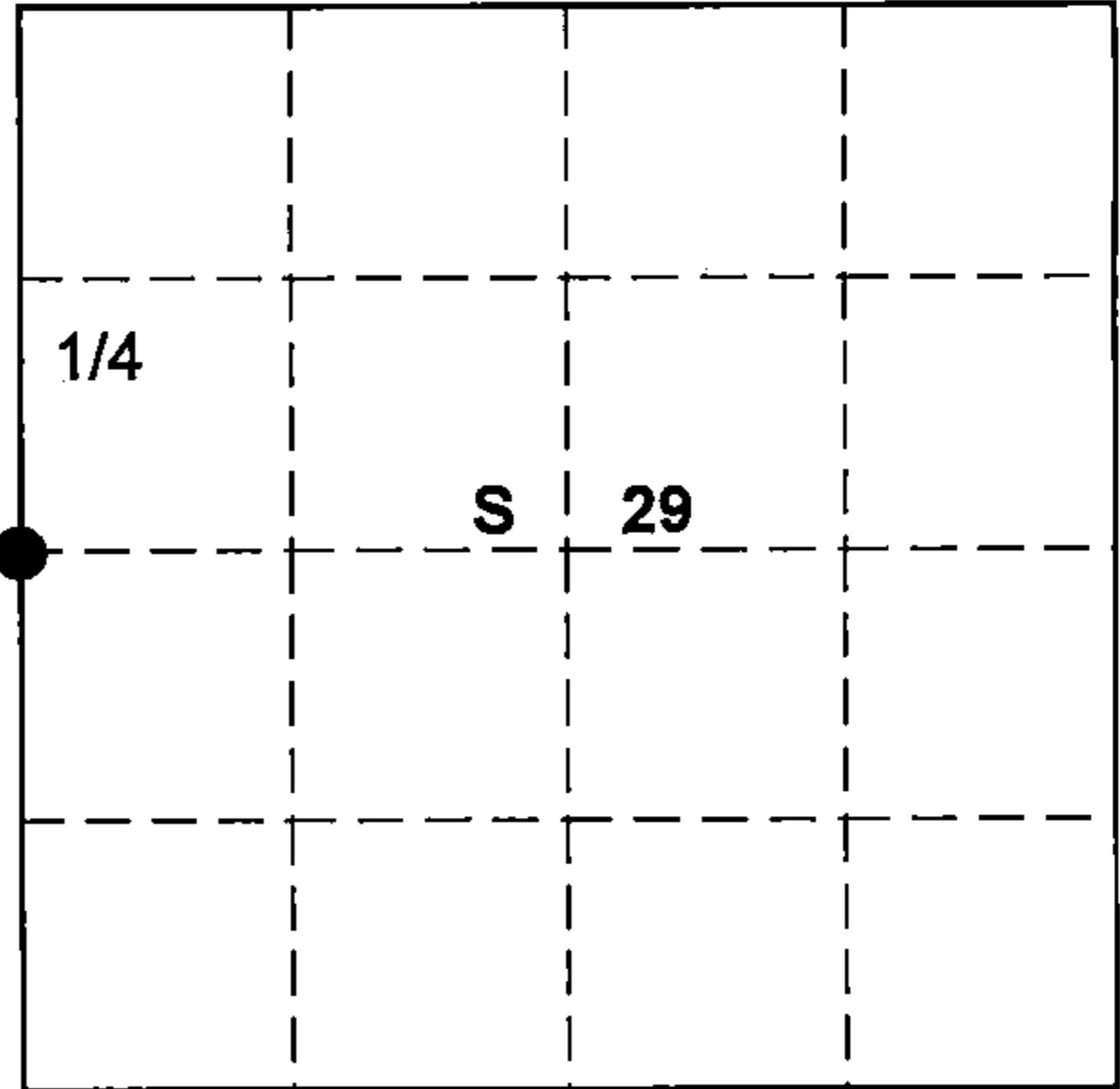
○ = Corner monument restored.

W-1/4 Corner

Sec. 29, T 37 N, R 14 E

Type of Monument:

2-1/4" Aluminum Pipe 3-1/4" Alloy Cap
2" above ground



FOREST COUNTY

(b) Describe any record evidence, monument evidence, occupational evidence, testimonial evidence or any other material evidence you considered, and whether the monument was found or placed.

No evidence of original or subsequent monument or accessories.

Reestablished quarter section corner on a proportional measurement.

Total distance from northwest section corner to southwest section corner of section 29, is 5169.06' set quarter section corner 2569.53' intermediate.

Original corner established in 1865 by James Nowlin Gov.t Deputy Surveyor, from which Ash 6' bears N26E 20 lks and Birch 10' bears S10W 7 lks.

(c) In the plan view drawing below, provide reference ties to at least 4 witness monuments, or, if the location is within a municipality, to at least 2 witness monuments. (Witness monuments shall be made of concrete, natural stone, iron or other equally durable material).

Describe witness monuments:

(d) Show a plan view drawing depicting the relevant monuments

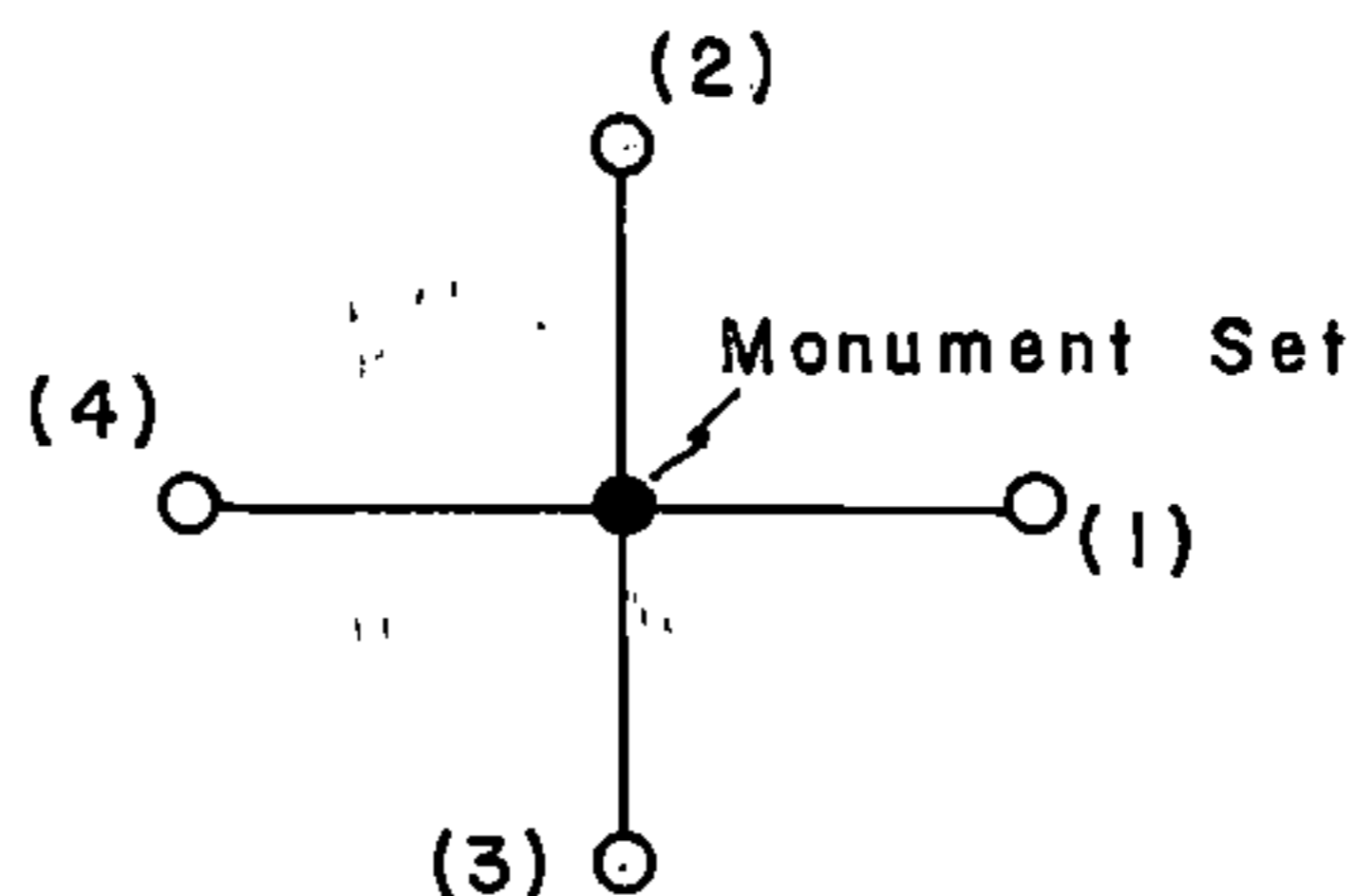
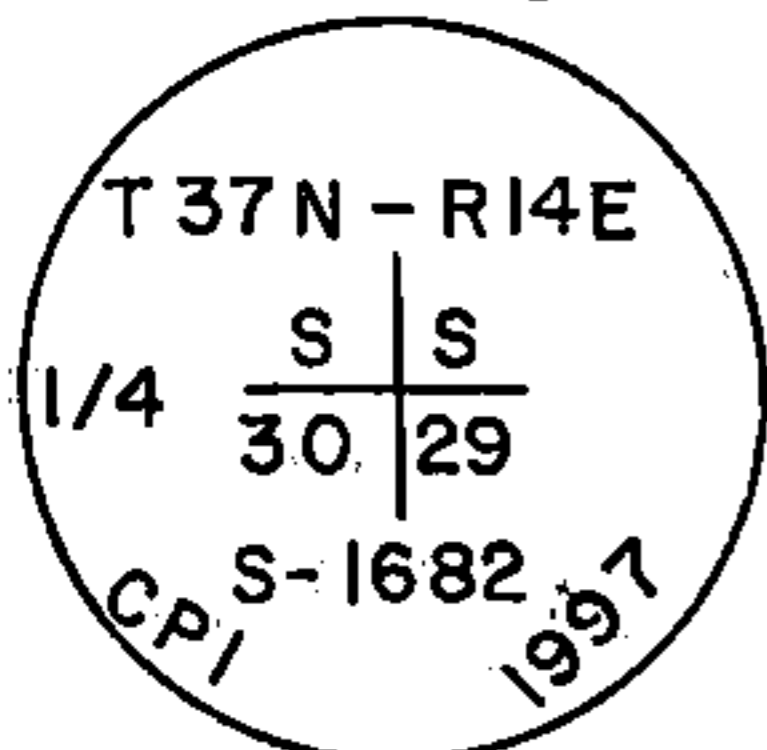
No B.T.s available.
Set four (4) 1-1/4"x 42" iron pipe for reference monuments.

and reference ties which is sufficient in detail to enable accurate relocation of the corner monument if the corner monument is disturbed. Indicate north.

- (1) N86E 14.02'
- (2) North 16.10'
- (3) S02W 17.11'
- (4) West 14.0'

Projecting 6" above ground

Monument Set
2" above ground

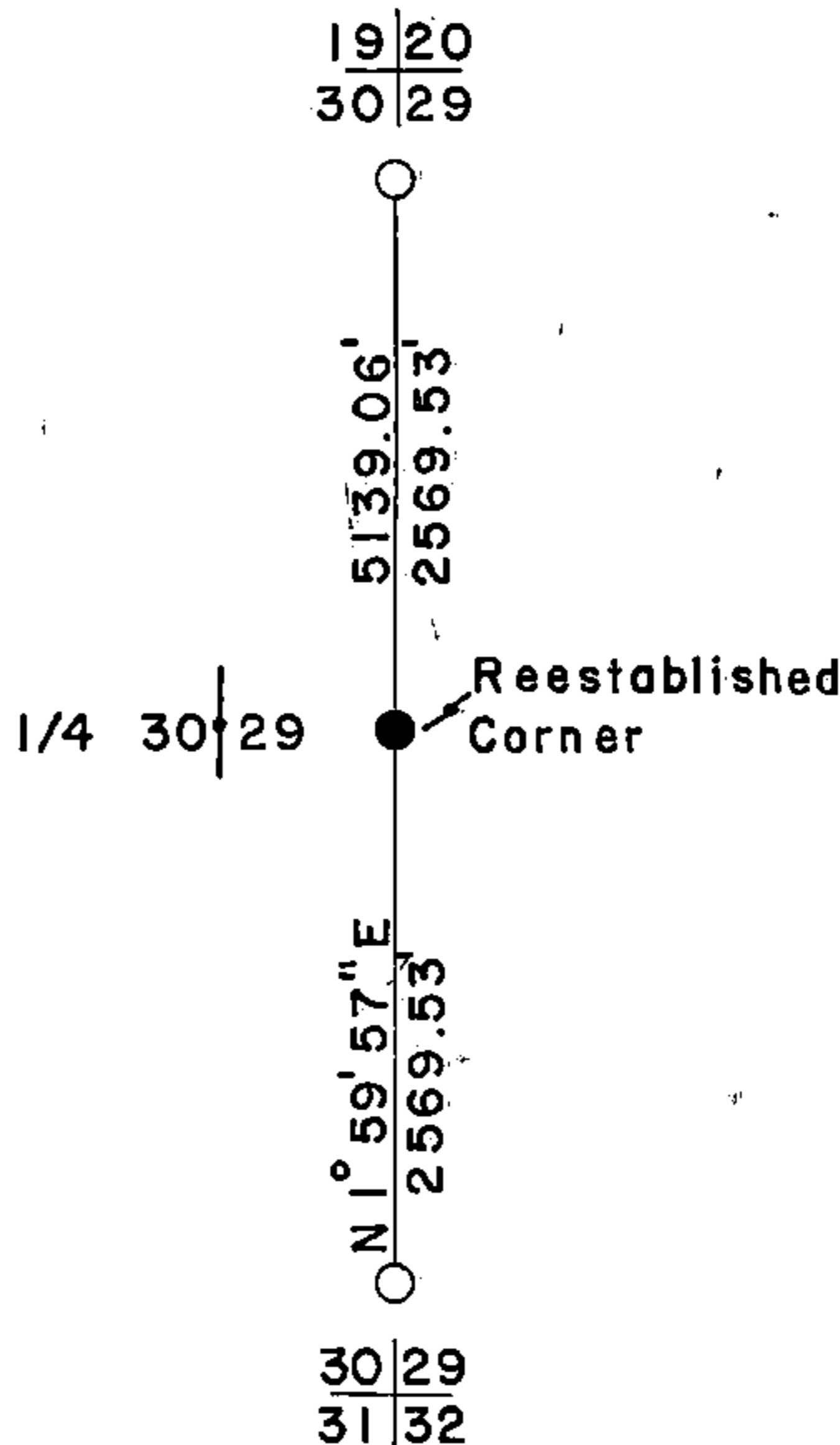


(e) Describe an material discrepancy between the location of the corner as restored or reestablished and the location of that corner as previously restored or reestablished by distance and direction. Show the discrepancy on the plan view drawing under (d), above. Show the distances between the corner as previously restored or reestablished and (1) the corner as restored or reestablished, and (2) to at least 2 of the witness monuments shown on the drawing in (d), above.

(f) Was the corner restored through acceptance of (1) an obliterated evidence location, or, (2) a found perpetuated location?

(g&h) Was the corner reestablished through lost corners proportionate methods? If so, show the method, including the directions and distances to other public land survey corners used as evidence or used for proportioning in determining the corner location?

Proportionate method



REGISTER'S OFFICE
 Forest County, WI
 Received for record this 3rd day
 of March A.D., 19 98
 at 1:14 o'clock P M. and
 recorded in Vol. 37-14 of records
 on page T-5.
Paul T. Lewis
 Deputy REGISTER

(i) I, Glen Barker (type or print name) certify that the corner location shown on this record was determined by me or under my direction and control and that this U.S. Public Land Survey Monument is correct and complete to the best of my knowledge and belief.



Signature Glen Barker Date 03/02/98