

CERTIFIED LAND CORNER RESTORATION

Index No. J 3

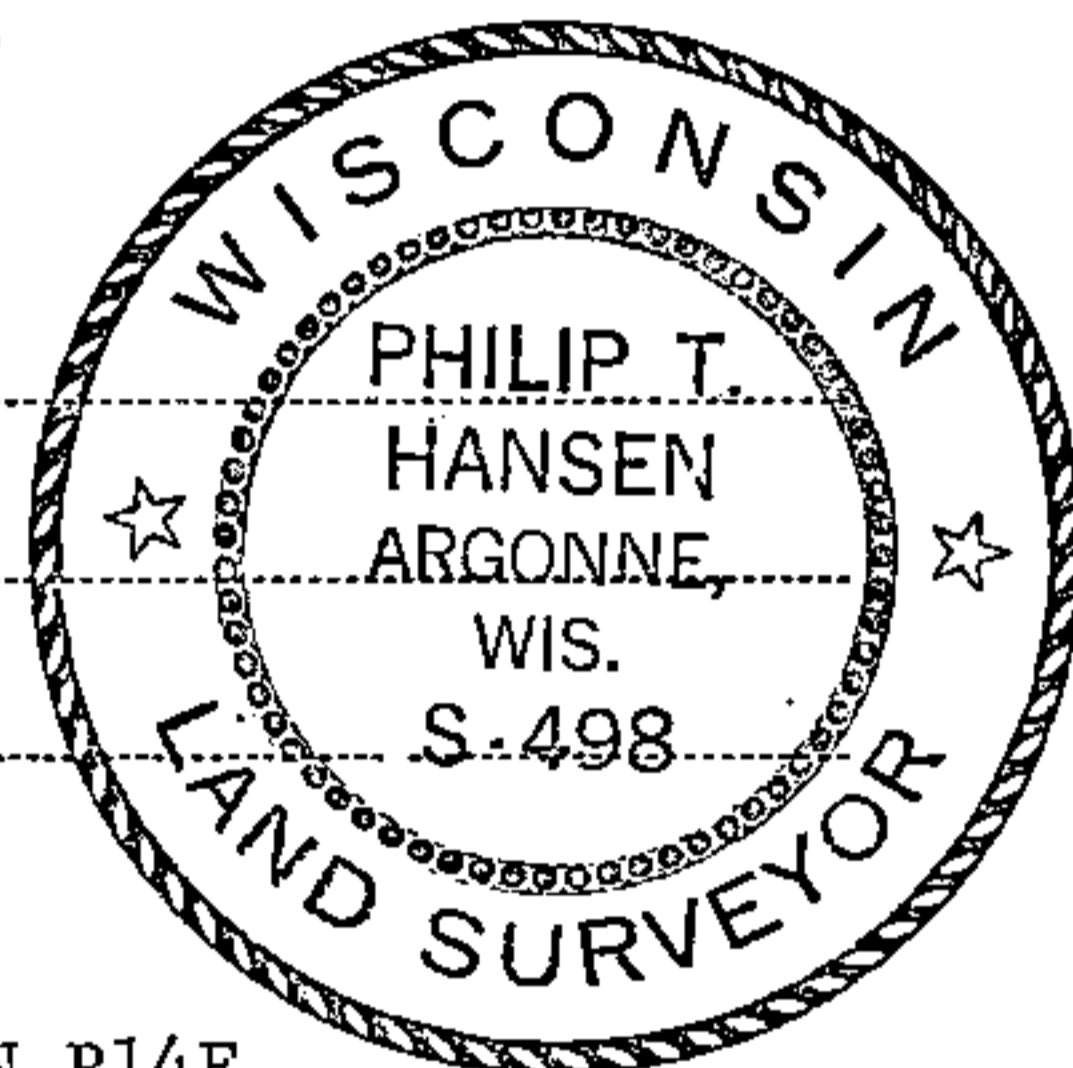
State of Wisconsin }
County of Forest } ss.

I Philip T. Hansen, do hereby certify that on the 17th day of December, 19 75, I found evidence of the Quarter corner of Sections 7 and 18 Township 37, North, Range 14 east, Fourth Principal Meridian, as described hereon; and that from this evidence I established a new monument and accessories as described hereon to perpetuate the original location of this corner.

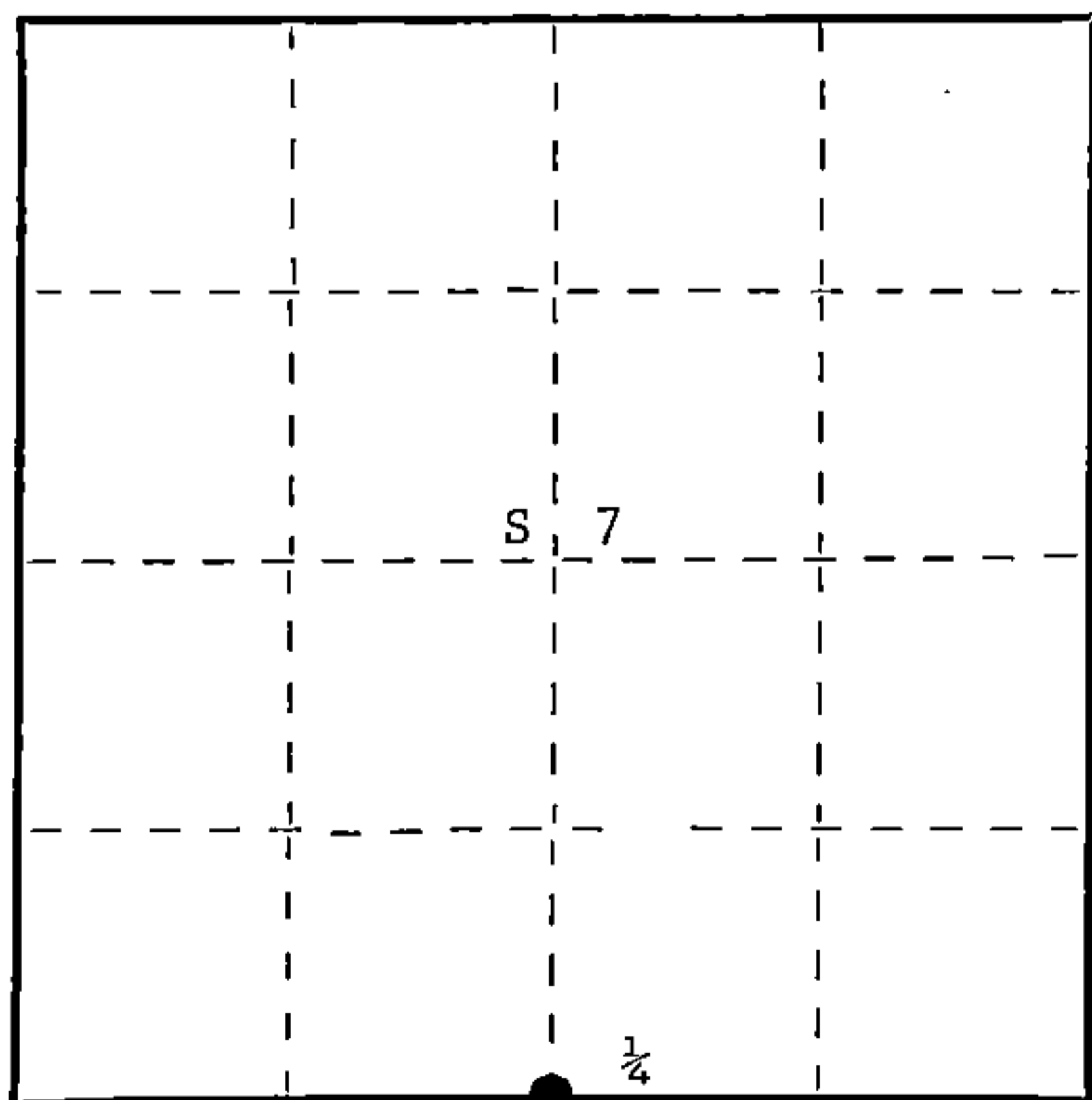
Resident witnesses:

Glen Barker

Jim Claflin



T37N R14E



○ = Corner monument restored.

History of original corner establishment: Original corner established by J.L. Nowlin, Deputy Surveyor, in 1865, from which fir 9" bears N38°E 7 links, and cedar 12" bears S63°W 9 links.

Corner recovered and maintained by Ray Leigh, Consolidated Forester, in 1945.

No record of any BT's established.

Description of corner evidence found: Recovered 4" squared cedar post in very poor condition.

No evidence of any BT's visible.

Description of monument and accessories I established to perpetuate the original location of this corner.

Replaced 4" cedar post with 2 1/2" Berntsen A-1 Federal Monument, aluminum, with magnet installed in cap and base. Pipe projects 18" above ground. Cap stamped -

NBT's - Cedar 6" N84°W 38 links, scribed 1/4 BT
Cedar 9" S38°E 29.8 links, scribed 1/4 BT

Pipe and BT's painted blue.

S498
T37N R14E
1/4 S 7
S 18
1975

Dated at Argonne, Wis., this 22nd day of December, 19 75.

Signature Philip T. Hansen Title Registered Land Surveyor Registration No. S-498
(County Surveyor, Registered Land Surveyor, or other duly authorized official)

Office of Register of Deeds, County of Forest, I hereby certify that the within instrument was filed in this office for record on the 5TH day of January, 19 76 at 2:45 o'clock P. M.

EUGENE STATEZNY
(Register of Deeds)

DOCUMENT NUMBER **108495**

By Eileen Schmidt Deputy

FORM 985 H. C. MILLER CO., MILWAUKEE

43714070020

CERTIFIED LAND CORNER RESTORATION
 U.S. PUBLIC LAND SURVEY MONUMENT RECORD

Index No. J-3

State of Wisconsin }
 County of Forest } ss.

I Glen Barker, do hereby
 certify that on the 14th day
 of February, 1989, I found
 Est. the Quarter
 corner of Section 7 & 18
 Township 37, North, Range
14 East, Fourth Principal Meridian,
 as described hereon; and that from this evidence
 I established a new monument and accessories
 as described hereon to perpetuate the original
 location of this corner.

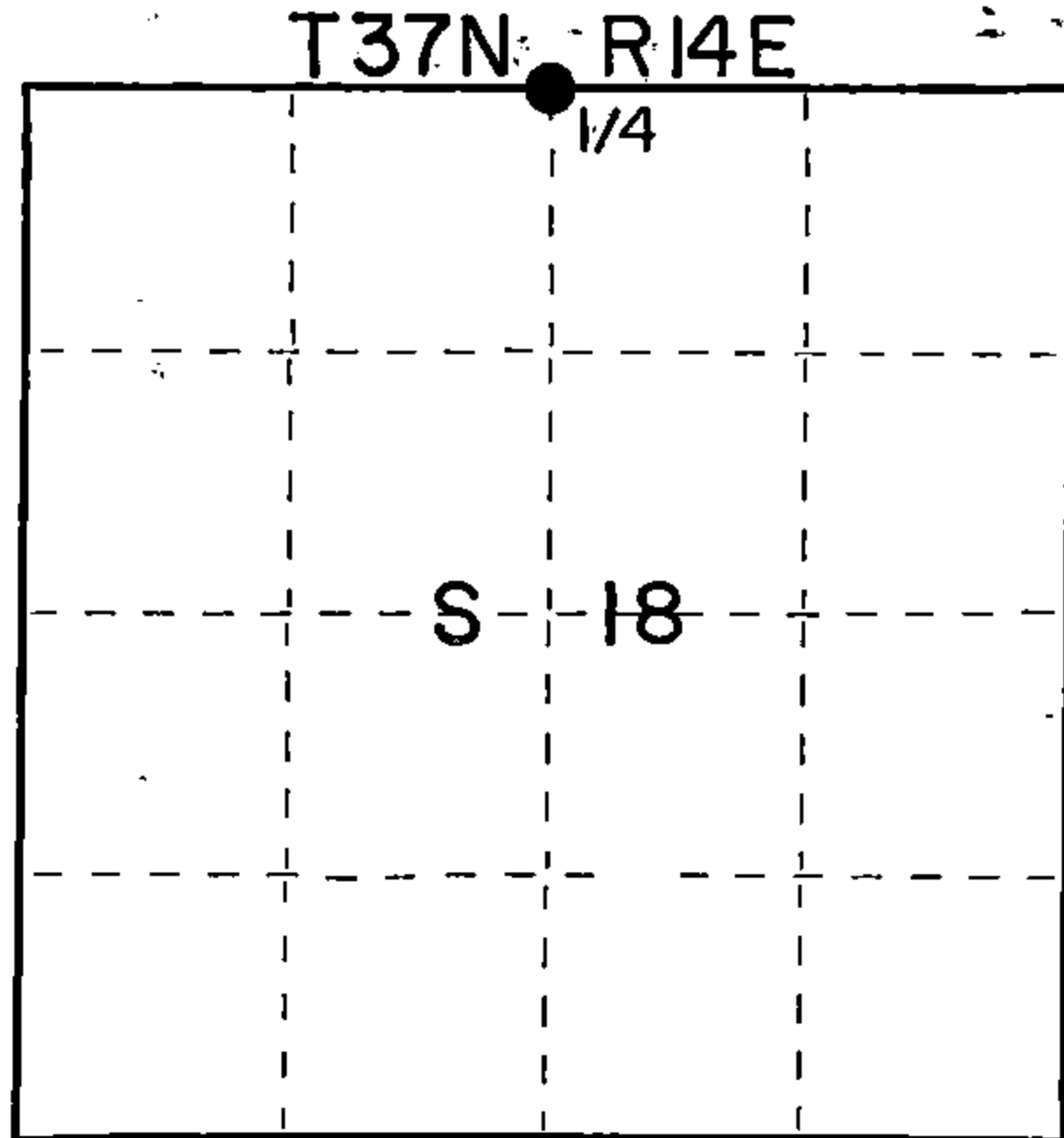
Resident witnesses:

Norm Spiess

Don Broadbridge

DOCUMENT NUMBER
137A30

FORM 985 H. C. MILLER CO., MILWAUKEE



○ = Corner monument restored.

History of original corner establishment:

Original Corner established by James L. Nowlin, Gov. Deputy Surveyor in 1865 from
 which Fir 9" bears N38E 7 lks, and Cedar 12" S63W 9 lks.

Description of corner evidence found:

Recovered what I believe to be an original BT - Cedar 12" (18") S63W through the years
 it has been chopped into several times that resulted in decay and any scribe marks
 would have been removed. Old W.C.D. Location tag on some dated 1/21/43, A. Nelson.
 Also on 12" Cedar blazed at D.B.H. bears N48W 4.0'. Searched in area off of original
 Cedar under moss and muck found pieces of Cedar which I believe to be part of old
 stake.

Description of monument and accessories I established to perpetuate the original location of this corner.

Set a 2 1/4" aluminum Forest County Monument with 3 1/4" alloy cap stamped.
 Monument projects 8" above ground.

Marked NBTs:
 Cedar 14" East 31.69'
 Cedar 14" S30W 35.14'
 Cedar 9" N82W 20.79'
 Cedar 12" N20W 8.50'

	T37N R14E
1/4	S 7
	S 18
	1989
	S-1682

Dated at Rhineland, Wis., this 31st day of March, 1989.

Signature Glen Barker Title Registered Land Surveyor Registration No. 1682
 (County Surveyor, Registered Land Surveyor, or other duly authorized official)

Office of Register of Deeds, County of Forest, I hereby certify that the within
 instrument was filed in this office for record on the 31st day of March, 1989
 at 10:25 o'clock A. M.

Paul Achenbrenner
 (Register of Deeds)

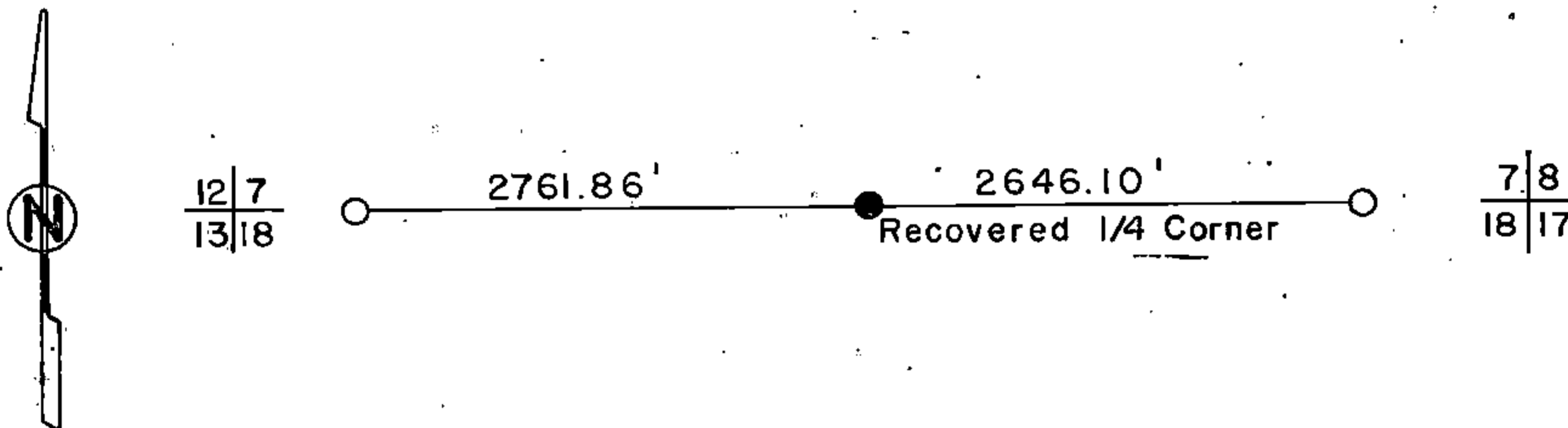
By.....Deputy

43714070020

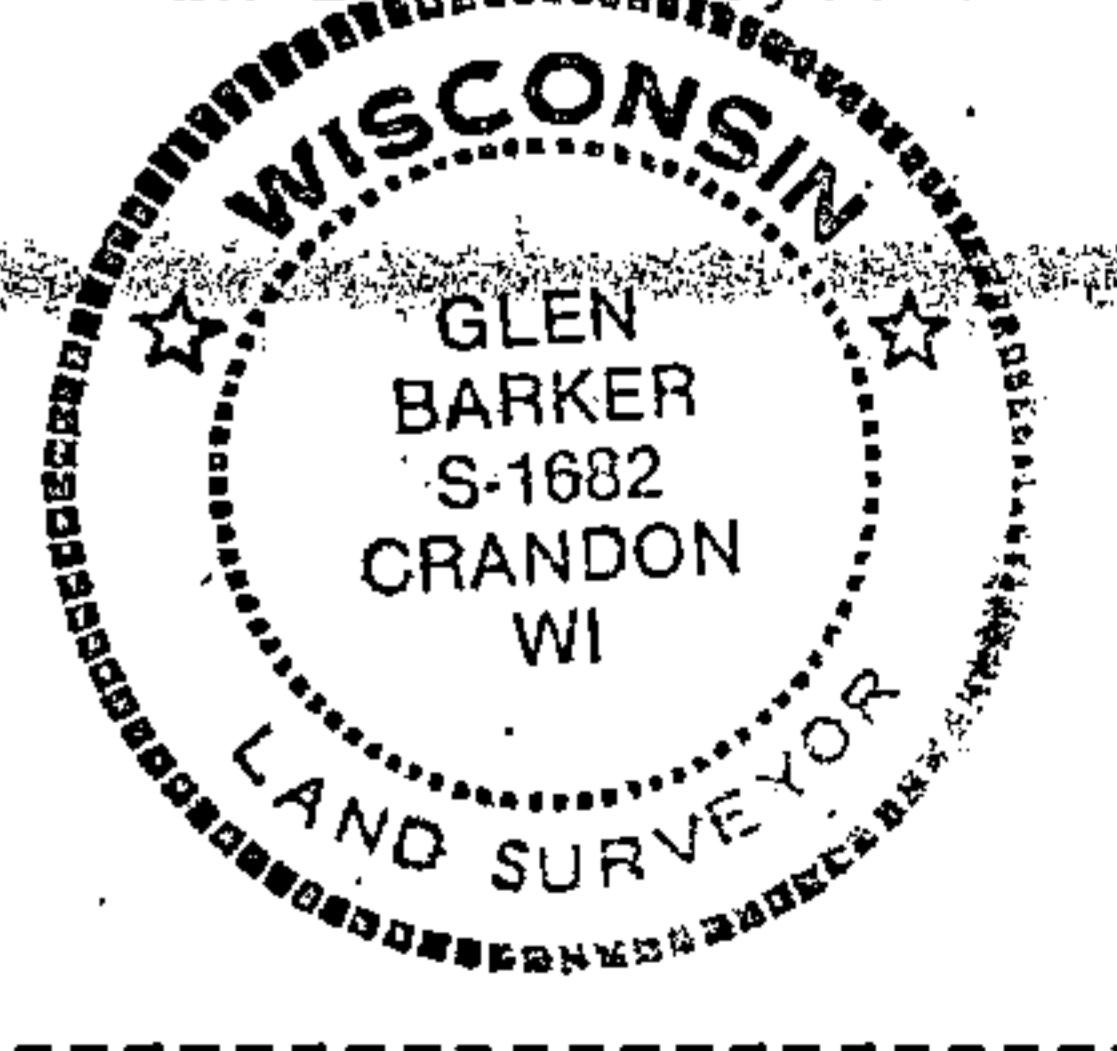
(d) Describe any material discrepancy between the location of the corner as restored or reestablished and the location of that corner as previously restored or reestablished by distance and direction. Show the discrepancy on the plan view drawing under (d), above. Show the distances between the corner as previously restored or reestablished and (1) the corner as restored or reestablished, and (2) to at least 2 of the witness monuments shown on the drawing in (d), above.

(f) Was the corner restored through acceptance of (1) an obliterated evidence location, or, (2) a found perpetuated location?

(g&h) Was the corner reestablished through lost corner proportionate methods? If so, show the method, including the directions and distances to other public land survey corners used as evidence or used for proportioning in determining the corner location?



Affix Land Surveyor Seal



(i) I, Glen Barker
(type or print name) certify that the corner location shown on this record was determined by me or under my direction and control and that this U.S. Public Land Survey Monument Record is correct and complete to the best of my knowledge and belief.

Glen Barker
Signature

3/3/89
Date