

CERTIFIED LAND CORNER RESTORATION

Index No. R-7

State of Wisconsin }
County of Forest } ss.

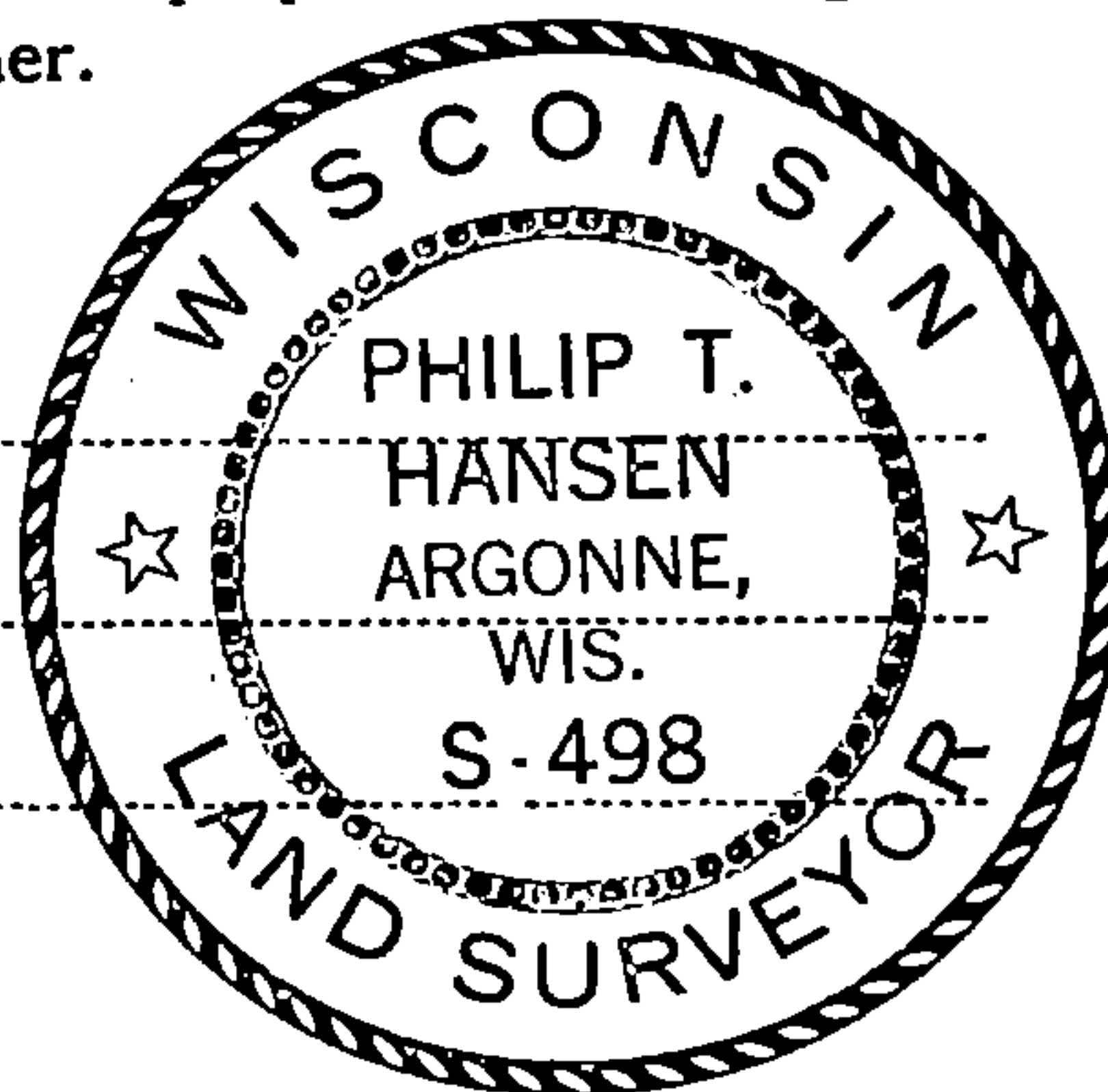
I Philip T. Hansen, do hereby certify that on the 14th day of November, 1977, I ~~found~~ established the Quarter corner of Section 20, 29 Township 37, North, Range 13 East, Fourth Principal Meridian, as described hereon; and that from this evidence I established a new monument and accessories as described hereon to perpetuate the original location of this corner.

Resident witnesses:

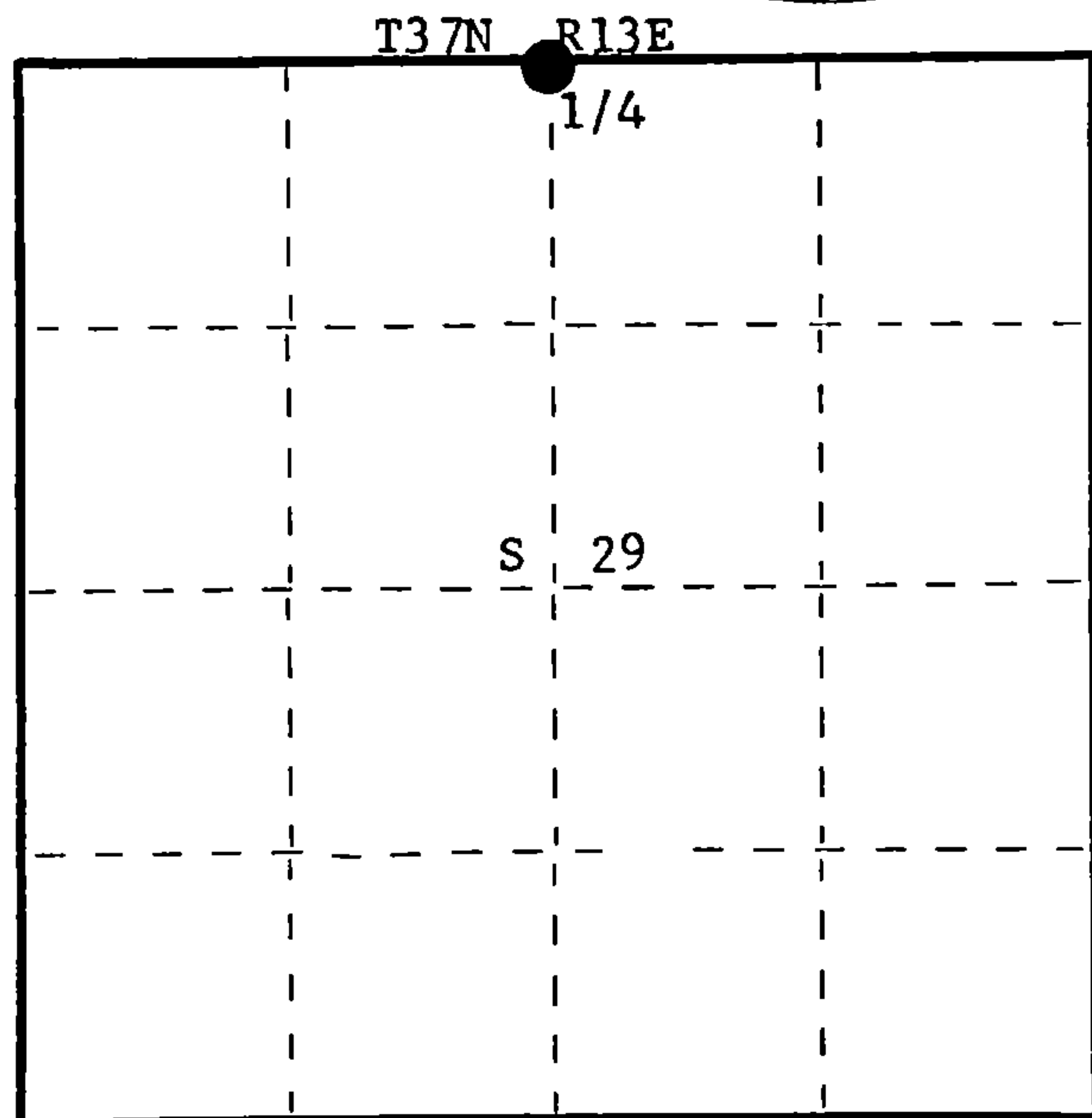
Glen Barker

Jim Claflin

Herb Wagoner



FORM 985 H. C. MILLER CO., MILWAUKEE



○ = Corner monument restored.

History of original corner establishment:

No record of any survey subsequent to original survey. Henry Peterson, owner of part of NE quarter, stated that his dad had this line surveyed about 57 years ago by Del Woodbury, Cruiser and Surveyor, in order to construct the fence line south on the quarter line. H. Peterson has replaced the north post a number of times to preserve the point. Nothing on record as to whether or not Woodbury had any original survey notes from which to set this corner.

Description of corner evidence found:

Recovered fence line south of highway 32 in fair condition. Ran line from previously established NE corner to recovered railroad spike buried in road at intersection of Highway P and Highway 32.

Description of monument and accessories I established to perpetuate the original location of this corner.

Set a survey spike 1/2" x 6" on the immediate south edge of blacktop on Highway 32 in line with fence line south for corner.

Set a 2 1/2" Berntsen A-1 Federal Monument, aluminum with magnet in cap and base for witness corner, 50 links south.

Monument projects 12" above ground. Cap stamped:

Marked B.O. - Power pole #3713 20R12 N74°E, 200.25 links.

B.T. - Basswood 14" S30°E, 65.1 links, scribed 1/4 BT.

T37N R13E

1/4 S²⁰ S⁺²⁹ W.C.

S498 - 1977

N 50 lks. to Cor.

Dated at Rhineland, Wis., this 16th day of November, 1977

Signature Philip T. Hansen Title Registered Land Surveyor Registration No. S-498
(County Surveyor, Registered Land Surveyor, or other duly authorized official)

Office of Register of Deeds, County of Forest, I hereby certify that the within instrument was filed in this office for record on the 17th day of November, 1977 at 4:00 o'clock P. M.

Eugene Staszny
(Register of Deeds)
By..... Deputy

DOCUMENT NUMBER **112816**

43713200020

REGISTER'S OFFICE
 Forest County, Wis.
 Received for record this 15th day
 of May A.D. 2008 at
11:50 o'clock A.M. and recorded
 in Vol. Corner Restoration
 page R-7
Kay Swanson, Deputy
 Register of Deeds

Document Number

197423

U.S. PUBLIC LAND SURVEY MONUMENT RECORD

(AS REQUIRED BY S. A-E 7.08, WI ADM. CODE)

HISTORY OF ORIGINAL CORNER ESTABLISHMENT AND SUBSEQUENT RESTORATIONS AND DESCRIPTION OF ANY RECORD, MONUMENT, OCCUPATIONAL, TESTIMONIAL, OR OTHER EVIDENCE CONSIDERED:

1885 - J.L. NOWLIN, SURVEYOR, SET POST

SET THE FOLLOWING WITNESSES:
 SUGAR MAPLE 7" N05°W 10 LINKS
 HEMLOCK 10" S02°E 12 LINKS

1977 - PHILIP T. HANSEN, SURVEYOR, S-498, SET A 1/2" X 6" SURVEY SPIKE ON THE IMMEDIATE SOUTH EDGE OF BLACKTOP OF HWY 22 IN LINE WITH A FENCE LINE SOUTH OF CORNER. SET A 2" BERNTSEN A-1 FEDERAL MONUMENT, ALUMINUM WITH MAGNET IN CAP AND BASE FOR WITNESS CORNER, 50 LINKS SOUTH. B.T. - BASSWOOD 14" S30°E, 85.1 LINKS, SCRIBED 1/4 BT. B.O. - POWER POLE #3713 20R12 N74°E, 200.25 LINKS.

1898 - PLAT OF RIGHT OF WAY, WISDOT PROJECT NO. 9261-03-23, SURVEY SPIKE IN CENTERLINE OF HWY 32.

2006 - JAMES H. MOORE, SURVEYOR, S-1641, FOUND A PK NAIL IN THE CENTERLINE OF HWY 32.
 SET THE FOLLOWING WITNESSES:

1" IRON PIPE w/ CEC CONTROL CAP S62°W 79.02 FEET - SET PIPE 2.8' IN FRONT OF 8" BALSAM.
 1" IRON PIPE w/ CEC CONTROL CAP N38°W 99.99 FEET - SET PIPE 3.5' IN FRONT OF 6" SPRUCE.
 1" IRON PIPE w/ CEC CONTROL CAP N83°E 92.51 FEET - SET PIPE 3.8' IN FRONT OF 12" CHERRY.
 1" IRON PIPE w/ CEC CONTROL CAP S39°E 102.19 FEET - SET PIPE 4.2' IN FRONT OF 10" BASSWOOD.
 ALL TREES HAVE NEW CHEST AND STUMP BLAZES

CORNER WAS: (CHECK ALL THAT APPLY)

- RESTORED THROUGH ACCEPTANCE OF AN OBLITERATED LOCATION
- RESTORED THROUGH ACCEPTANCE OF A FOUND PERPETUATED LOCATION
- CONSIDERED A LOST CORNER AND REESTABLISHED THROUGH LOST CORNER PROPORTIONATE METHODS (INCLUDING A PLAN VIEW DRAWING SHOWING DISTANCES AND DIRECTIONS TO OTHER PUBLIC LAND SURVEY CORNERS USED FOR PROPORTIONING AND DETERMINING THE CORNER LOCATION)
- RESTORED OR REESTABLISHED IN A LOCATION THAT DIFFERS FROM A PREVIOUS RESTORATION OF REESTABLISHMENT (INCLUDE A PLAN VIEW DRAWING AND INDICATE WHAT WAS SET AND/OR FOUND)

DESCRIBE THE MONUMENT AND ACCESSORIES USED TO PERPETUATE THE LOCATION OF THIS CORNER. (INCLUDE A PLAN VIEW DRAWING AND INDICATE WHAT WAS SET AND/OR FOUND)

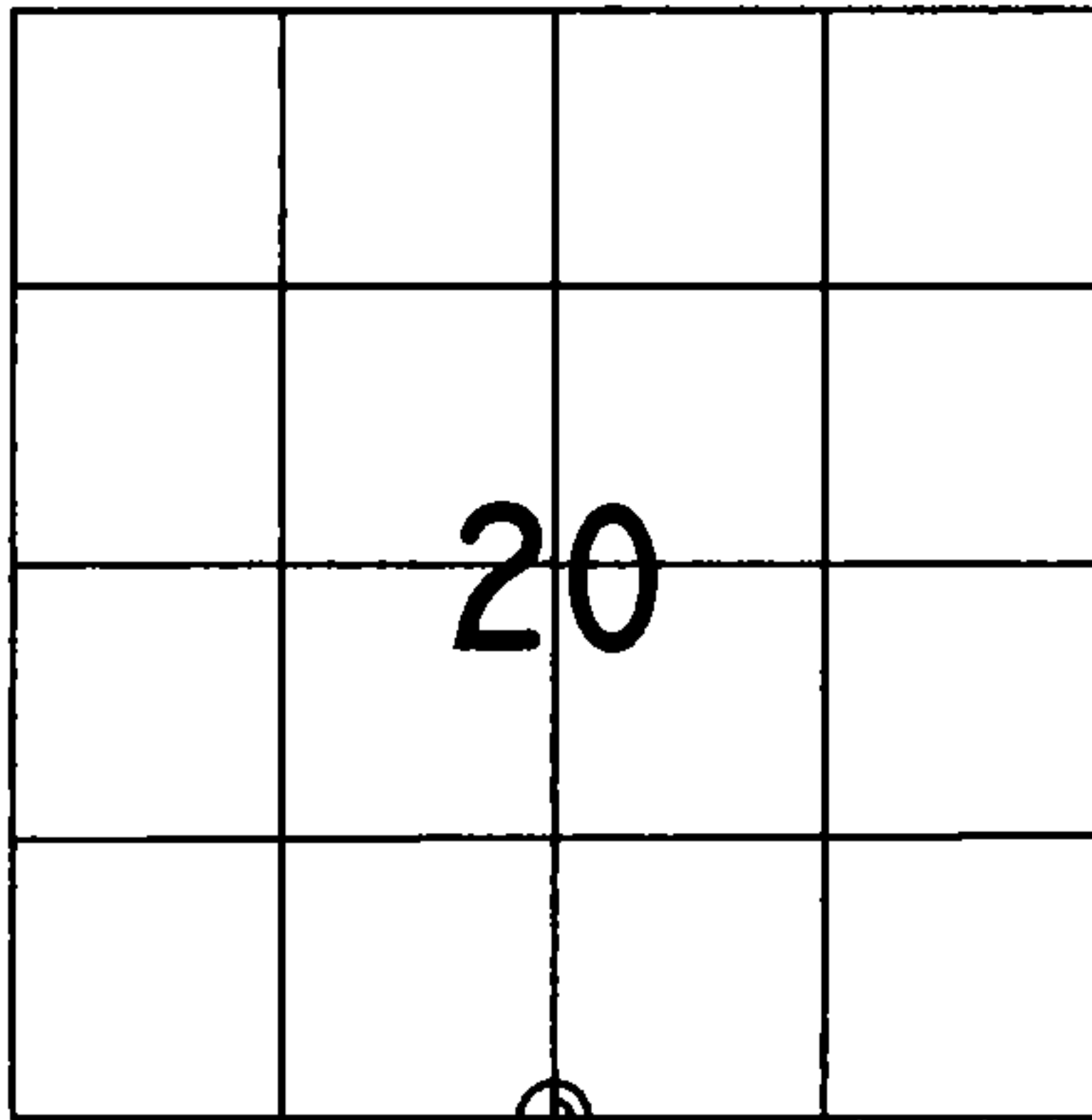
CORNER WAS REMOVED DURING CONSTRUCTION. CORNER WAS RESET WITH A SURVEY SPIKE USING DISTANCE INTERSECTION OF EXISTING RIGHT OF WAY MONUMENTS AS PART OF THE PLAT OF RIGHT OF WAY, WISDOT PROJECT NO. 9261-03-23. SEARCHED FOR REFERENCE MONUMENT (50 LINKS SOUTH) AS DESCRIBED IN CERTIFIED LAND CORNER RESTORATION DATED NOV. 17, 1977 BY HANSEN S-498. DID NOT FIND REFERENCE MONUMENT BUT FOUND REMAINS OF OLD BARB WIRE FENCE TO SOUTH AS CALLED FOR. MEASURED TO THE SECTION CORNER WEST AND THE DISTANCE MATCHED LOCAL SURVEYS OF THE AREA. AFTER REVIEW OF US PUBLIC LAND SURVEY MONUMENT RECORD DOCUMENT 189925 IT WAS FOUND THAT THE CORNER WAS NOT THE SECTION CORNER BUT AN ALIGNMENT POINT FOR THE HWY 32. MONUMENT RECORD 189925 SHOULD BE VOID AND THIS RECORD REPLACES RECORD 189925.

SET SURVEY SPIKE 5.3 FEET NORTH OF THE SOUTH EDGE OF BIT. OF HWY 32.
 FOUND THE FOLLOWING WITNESSES:

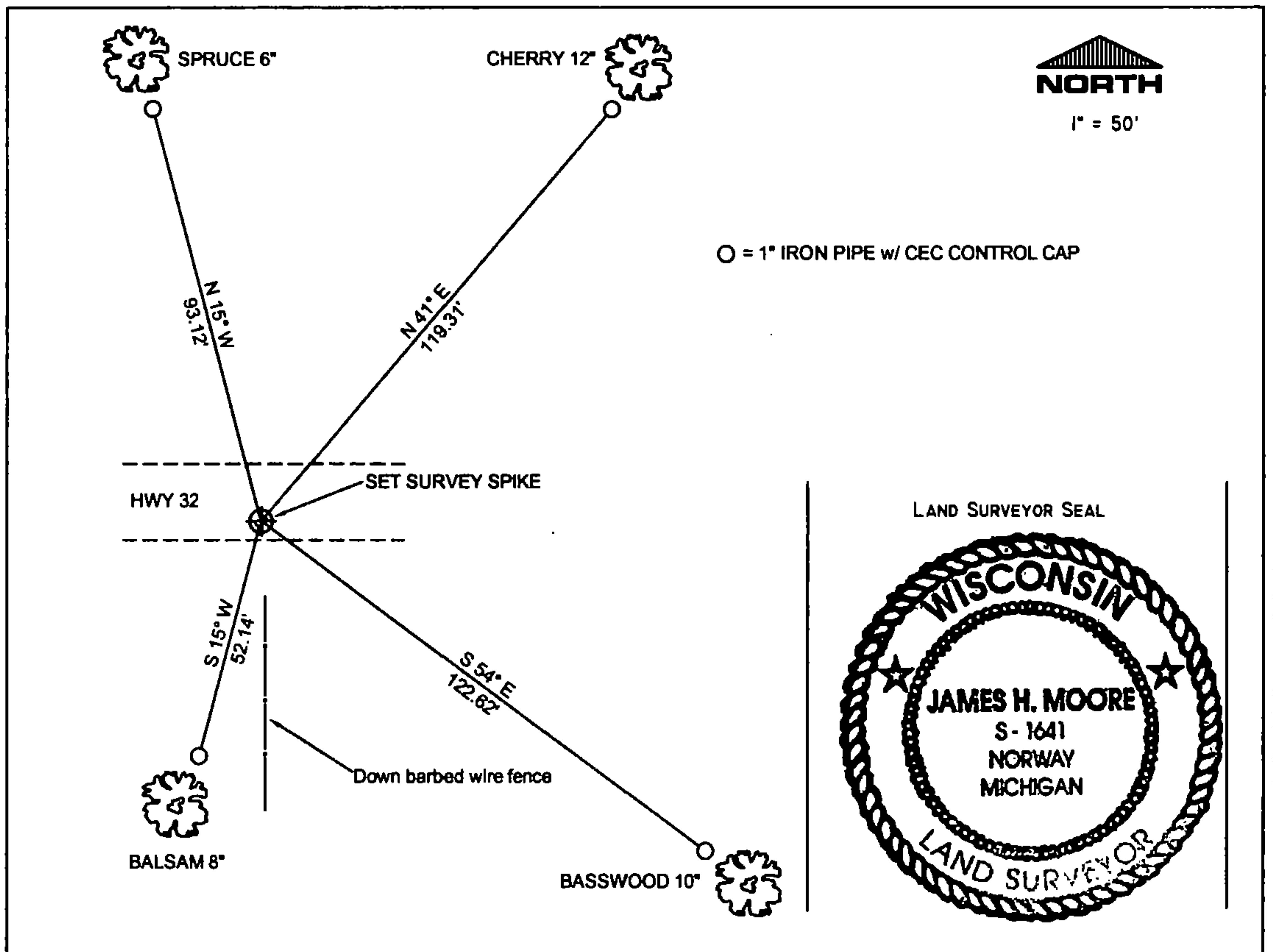
1" IRON PIPE w/ CEC CONTROL CAP S15°W 52.14 FEET - FOUND PIPE 2.8' IN FRONT OF 8" BALSAM.
 1" IRON PIPE w/ CEC CONTROL CAP N15°W 93.12 FEET - FOUND PIPE 3.5' IN FRONT OF 6" SPRUCE.
 1" IRON PIPE w/ CEC CONTROL CAP N41°E 119.31 FEET - FOUND PIPE 3.8' IN FRONT OF 12" CHERRY.
 1" IRON PIPE w/ CEC CONTROL CAP S54°E 122.62 FEET - FOUND PIPE 4.2' IN FRONT OF 10" BASSWOOD.

ALL TREES HAVE EXISTING CHEST AND STUMP BLAZES AND WERE REFRESHED WITH RED PAINT.

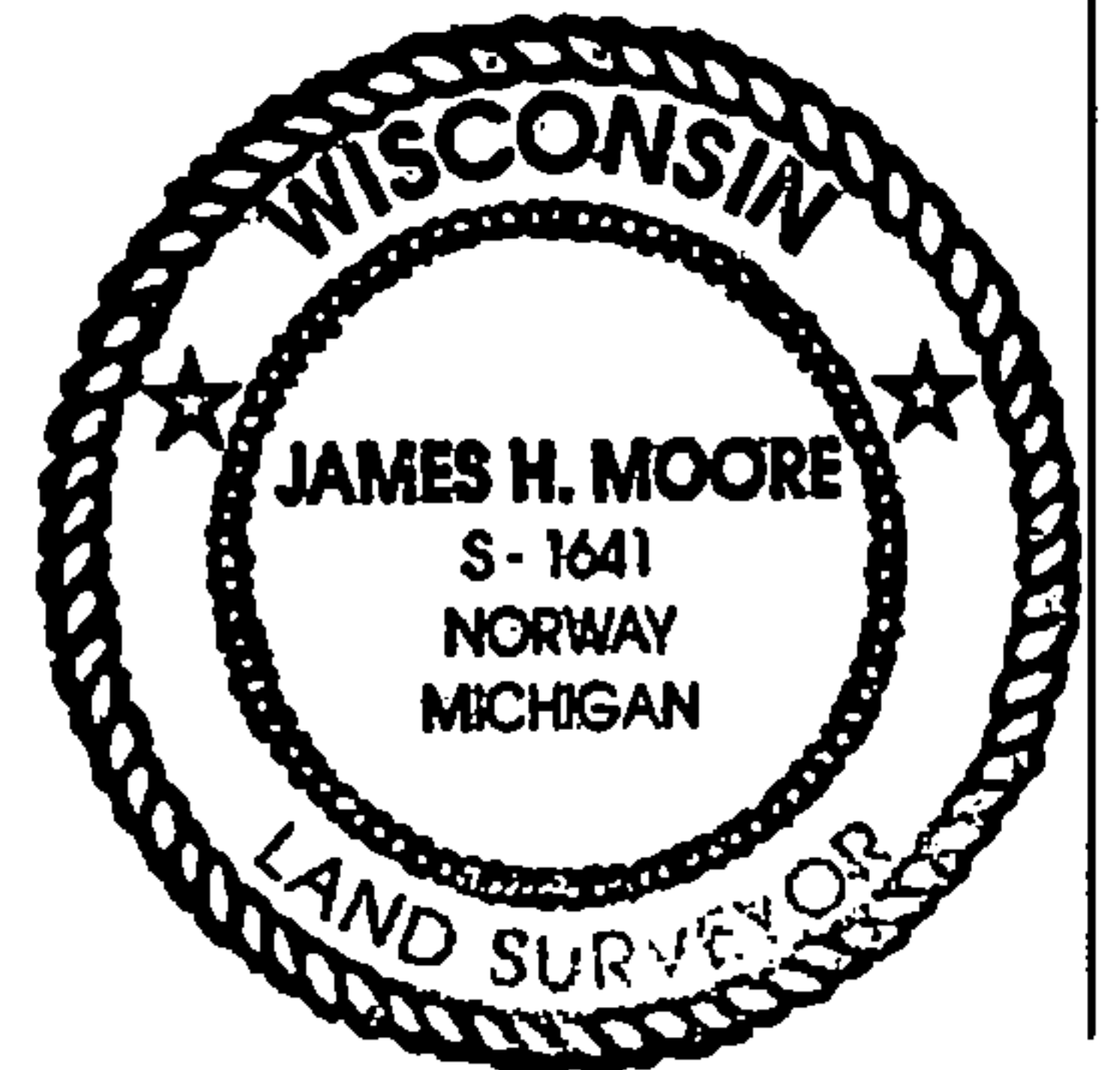
THE S 1/4
 CORNER OF SECTION 20,
 T. 37 N., R. 13 E.,
 FOREST COUNTY, WISCONSIN



⊕ = LOCATION OF CORNER



LAND SURVEYOR SEAL



I, JAMES H. MOORE PS S-1641

(TYPE OR PRINT NAME) CERTIFY THAT THE CORNER LOCATION SHOWN ON THIS ABOVE RECORD WAS DETERMINED BY ME OR UNDER MY DIRECTION AND CONTROL AND THAT THIS U.S. PUBLIC LAND SURVEY MONUMENT RECORD IS CORRECT AND COMPLETE TO THE BEST OF MY KNOWLEDGE AND BELIEF.

INDEX No. R-7

SIGNATURE *James H. Moore* DATE 5-15-08

43713200020

R-7

Document Number

189925

REGISTER'S OFFICE }
Forest County, Wis. }
Received for record this 18th day
of January A.D., 2006 at
9:00 o'clock A.M. and recorded
in Vol. Corner Restoration
page A-7

Kay Swanson, Deputy
Register of Deeds

U.S. PUBLIC LAND SURVEY MONUMENT RECORD

(AS REQUIRED BY s. A-E 5.02, WI ADM. CODE)

HISTORY OF ORIGINAL CORNER ESTABLISHMENT AND SUBSEQUENT RESTORATIONS AND DESCRIPTION OF ANY RECORD, MONUMENT, OCCUPATIONAL, TESTIMONIAL, OR OTHER EVIDENCE CONSIDERED:

1865 - J.L. NOWLIN, SURVEYOR, SET POST

SET THE FOLLOWING WITNESSES:
SUGAR MAPLE 7" N05°W 10 LINKS
HEMLOCK 10" S02°E 12 LINKS

1998 - PLAT OF RIGHT OF WAY, WISDOT PROJECT NO. 9261-03-23, SURVEY SPIKE IN CENTERLINE OF HWY 32.

CORNER WAS: (CHECK ALL THAT APPLY)

- RESTORED THROUGH ACCEPTANCE OF AN OBLITERATED LOCATION
- RESTORED THROUGH ACCEPTANCE OF A FOUND PERPETUATED LOCATION
- CONSIDERED A LOST CORNER AND REESTABLISHED THROUGH LOST CORNER PROPORTIONATE METHODS (INCLUDING A PLAN VIEW DRAWING SHOWING DISTANCES AND DIRECTIONS TO OTHER PUBLIC LAND SURVEY CORNERS USED FOR PROPORTIONING AND DETERMINING THE CORNER LOCATION)
- RESTORED OF REESTABLISHED IN A LOCATION THAT DIFFERS FROM A PREVIOUS RESTORATION OF REESTABLISHMENT (INCLUDE A PLAN VIEW DRAWING AND INDICATE WHAT WAS SET AND/OR FOUND)

DESCRIBE THE MONUMENT AND ACCESSORIES USED TO PERPETUATE THE LOCATION OF THIS CORNER. (INCLUDE A PLAN VIEW DRAWING AND INDICATE WHAT WAS SET AND/OR FOUND)

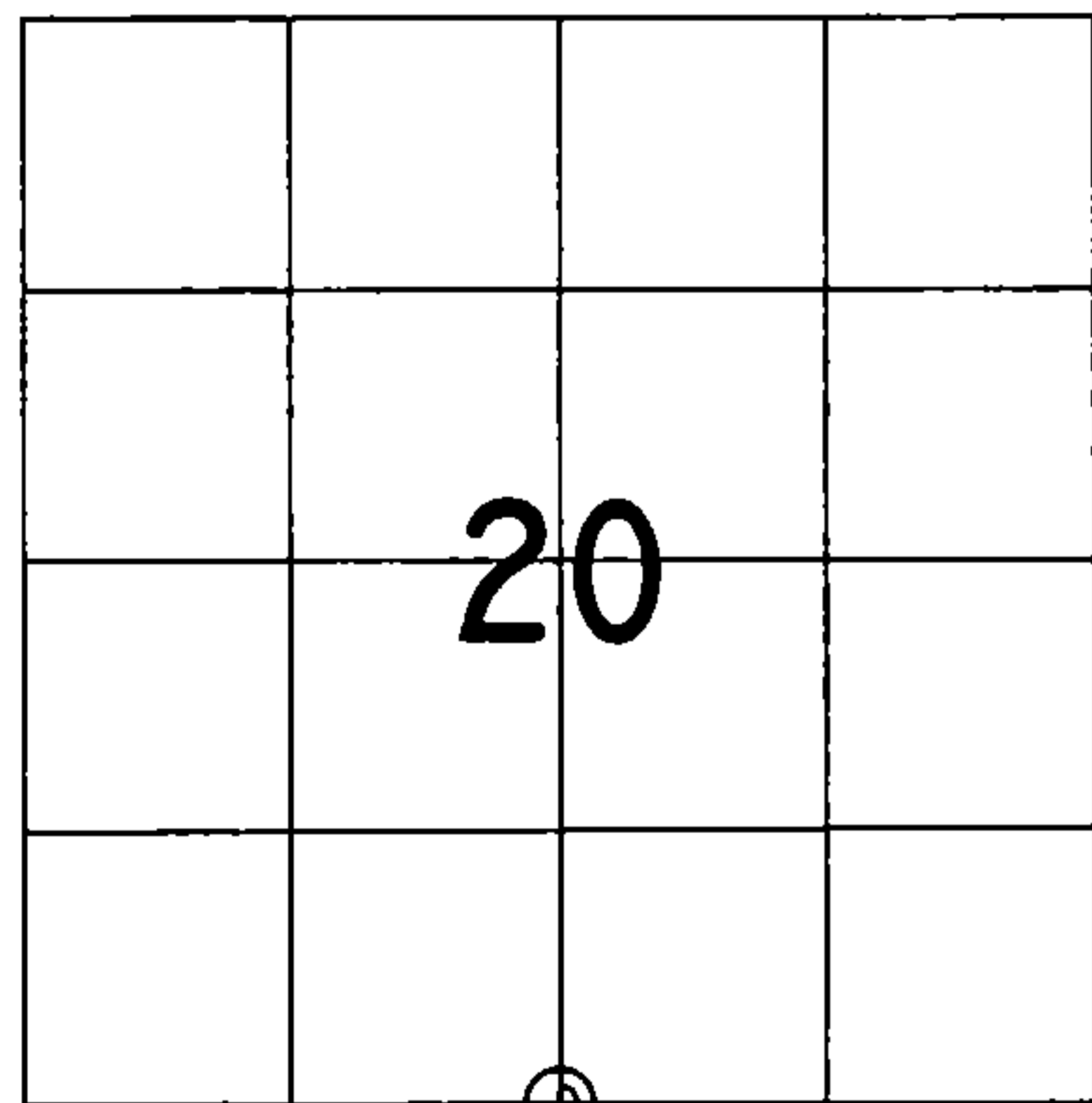
FOUND A PK NAIL IN THE CENTERLINE OF HWY 32.

SET THE FOLLOWING WITNESSES:

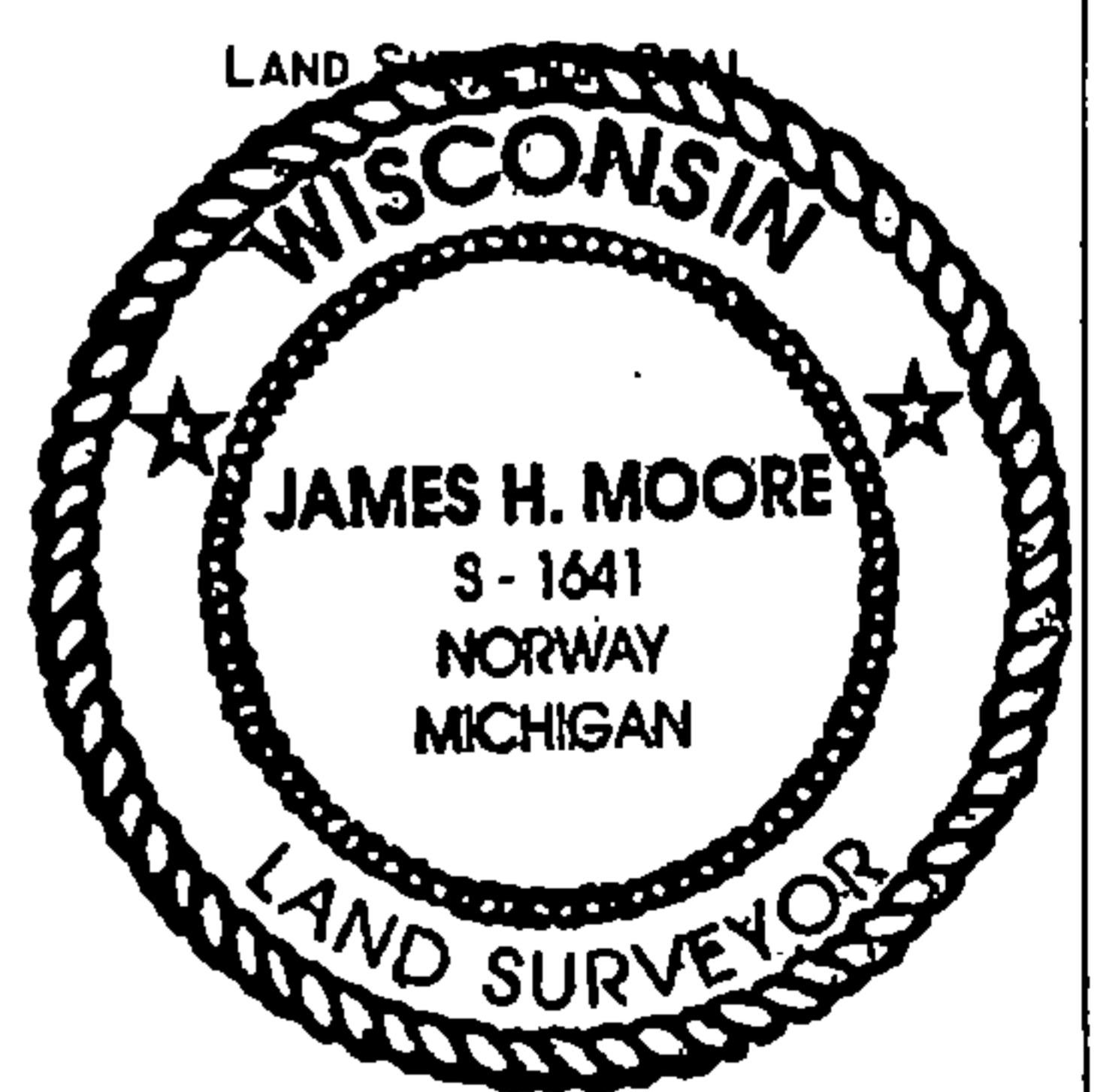
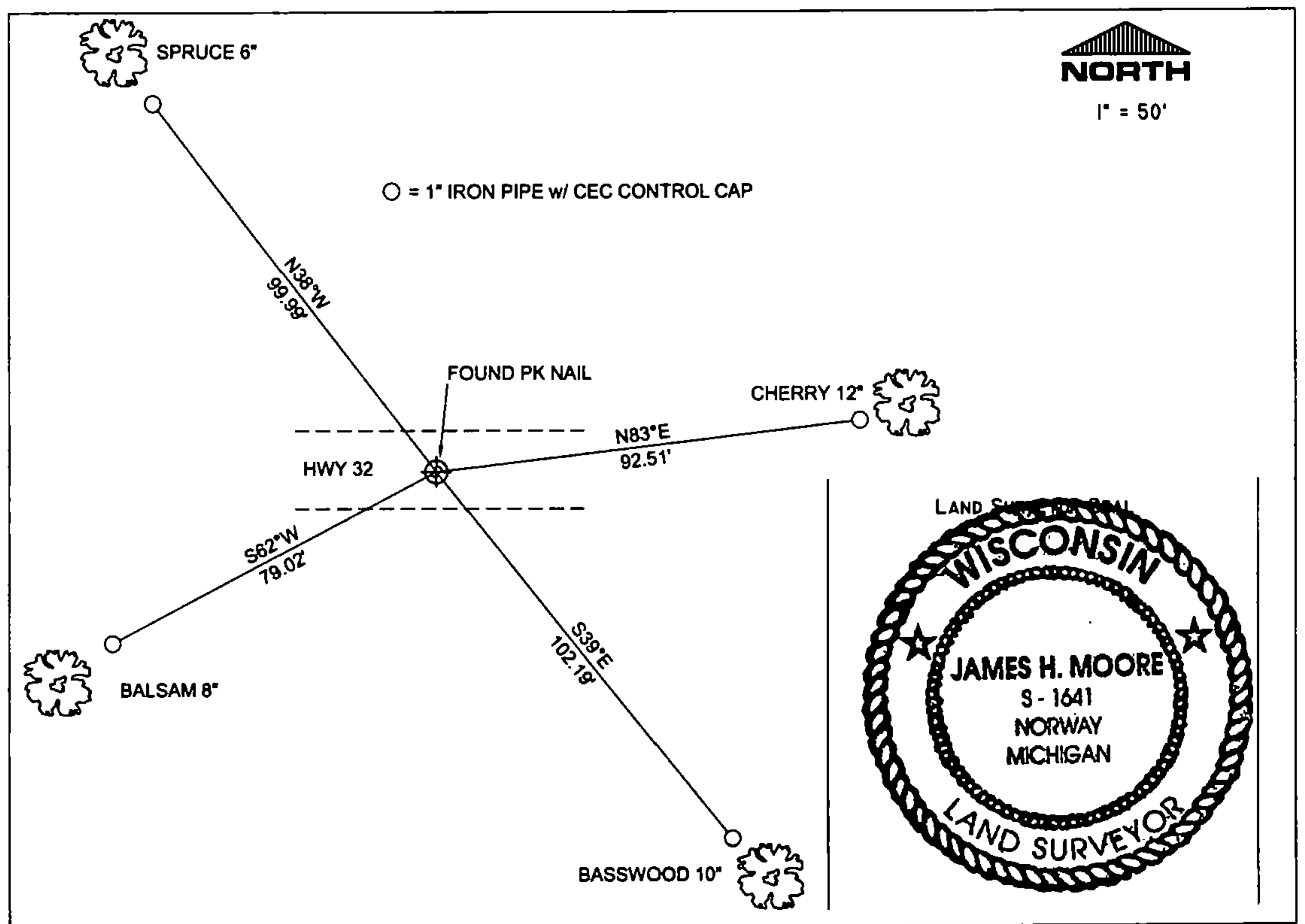
1" IRON PIPE w/ CEC CONTROL CAP S62°W 79.02 FEET - SET PIPE 2.8' IN FRONT OF 8" BALSAM.
 1" IRON PIPE w/ CEC CONTROL CAP N38°W 99.99 FEET - SET PIPE 3.5' IN FRONT OF 6" SPRUCE.
 1" IRON PIPE w/ CEC CONTROL CAP N83°E 92.51 FEET - SET PIPE 3.8' IN FRONT OF 12" CHERRY.
 1" IRON PIPE w/ CEC CONTROL CAP S39°E 102.19 FEET - SET PIPE 4.2' IN FRONT OF 10" BASSWOOD.

ALL TREES HAVE NEW CHEST AND STUMP BLAZES

THE S 1/4
CORNER OF SECTION 20,
T. 37 N., R. 13 E.,
FOREST COUNTY, WISCONSIN



⊕ = LOCATION OF CORNER



I, JAMES H. MOORE PS S-1641

INDEX No. D-9

(TYPE OR PRINT NAME) CERTIFY THAT THE CORNER LOCATION SHOWN ON THIS ABOVE RECORD WAS DETERMINED BY ME OR UNDER MY DIRECTION AND CONTROL AND THAT THIS U.S. PUBLIC LAND SURVEY MONUMENT RECORD IS CORRECT AND COMPLETE TO THE BEST OF MY KNOWLEDGE AND BELIEF.

James H. Moore 1-16-06
 SIGNATURE DATE

43713200020

R-7