

CERTIFIED LAND CORNER RESTORATION

Index No. R-9

State of Wisconsin }  
County of Forest } ss.

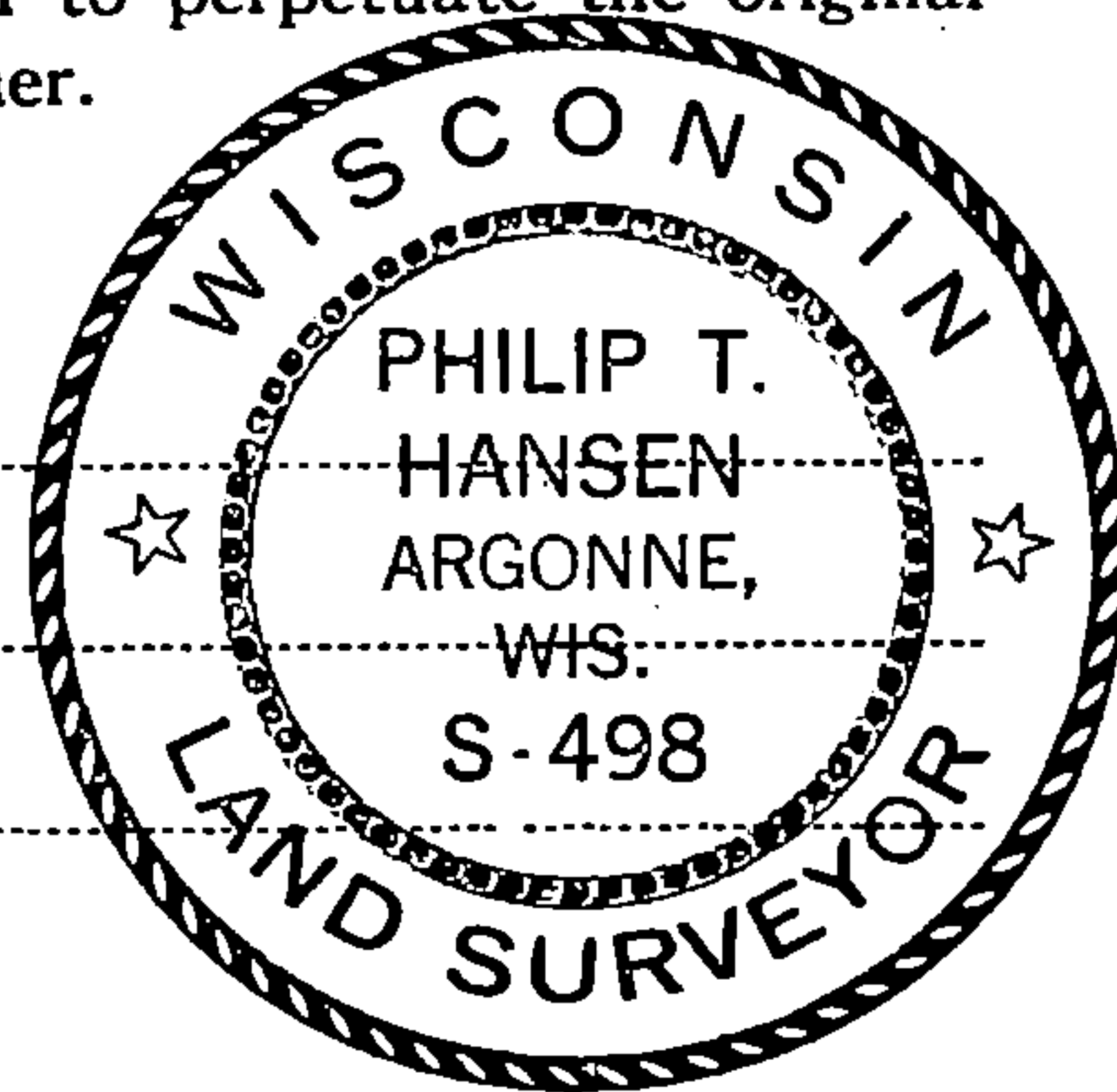
I Philip T. Hansen, do hereby certify that on the 14th day of November, 1977, I ~~found~~ <sup>established</sup> ~~existence of the~~ <sup>corner of</sup> Sec. 20, 21, 28, 29 Township 37, North, Range 13 East, Fourth Principal Meridian, as described hereon; and that from this evidence I established a new monument and accessories as described hereon to perpetuate the original location of this corner.

Resident witnesses:

Glen Barker

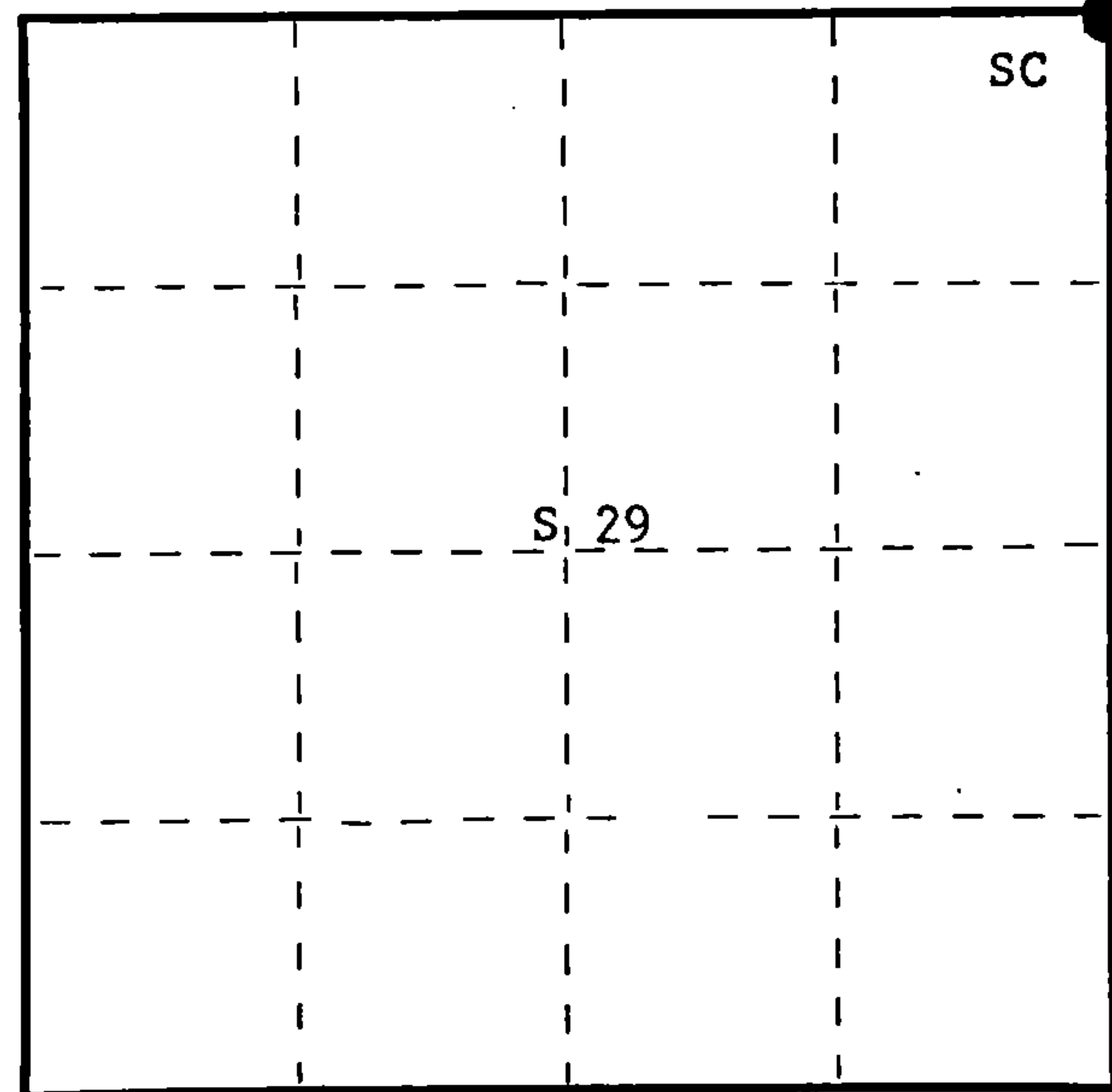
Jim Claflin

Herb Wagoner



FORM 985 H. C. MILLER CO., MILWAUKEE

T37N R13E



○ = Corner monument restored.

History of original corner establishment:

No record of any survey subsequent to original survey.

Description of corner evidence found:

Accepted the intersection of centerline of Highway 32, south and west, the town road north and the section line fence east as the corner. This sets in the centerline of the town road north.

Description of monument and accessories I established to perpetuate the original location of this corner.

Set a 2 1/2" Berntsen A-1 Federal Monument, aluminum with magnet in cap and base for witness corner 50 links east of survey spike driven below the surface of road. Monument projects 10" above ground. Cap stamped: Marked B.O.s to true corner.

Power pole #3713 20R N62°W, 71.6 links (spike)  
Power pole (no number) N38°E, 48.9 links (spike)  
B.T. - Basswood 14" N16°E, 131.4 links, scribed SC BT.

T37N R13E  
20 21  
29 28  
S498 - 1977  
W 50 lks to Cor.

Dated at Rhineland, Wis., this 16th day of November, 1977.

Signature Philip T. Hansen Title Registered Land Surveyor Registration No. S-498  
(County Surveyor, Registered Land Surveyor, or other duly authorized official)

Office of Register of Deeds, County of Forest, I hereby certify that the within instrument was filed in this office for record on the 17th day of November, 1977. at 4:00 o'clock P. M.

Eugene Staszny  
(Register of Deeds)

By \_\_\_\_\_ Deputy

DOCUMENT NUMBER  
**112817**

4371320000

REGISTER'S OFFICE  
Forest County, Wis.

Received for record this 15<sup>th</sup> day  
of May A.D., 2008 at  
11:50 o'clock AM, and recorded  
in Vol. Corner Restoration  
page R-9

Kay Swanson, Deputy  
Register of Deeds

# Document Number

197421

## U.S. PUBLIC LAND SURVEY MONUMENT RECORD

(AS REQUIRED BY S. A-E 7.08, WI ADM. CODE)

HISTORY OF ORIGINAL CORNER ESTABLISHMENT AND SUBSEQUENT RESTORATIONS AND DESCRIPTION OF ANY RECORD, MONUMENT, OCCUPATIONAL, TESTIMONIAL, OR OTHER EVIDENCE CONSIDERED:

1865 - J.L. NOWLIN, SURVEYOR, SET POST

SET THE FOLLOWING WITNESSES:

BIRCH 12" N25°W 4 LINKS

MAPLE 8" N43°E 30 LINKS

1977 - PHILIP T. HANSEN, SURVEYOR, S-498, SET A 2-1/2" BERNTSEN A-1 FEDERAL MONUMENT, ALUMINUM WITH MAGNET IN CAP AND BASE FOR WITNESS CORNER, 50 LINKS EAST OF SURVEY SPIKE DRIVEN BELOW THE SURFACE OF THE ROAD. MARKED B.O.'S TO TRUE CORNER  
POWER POLE #3713 20R N62°W 71.6 LINKS (SPIKE)  
POWER POLE (NO NUMBER) N38°E 48.9 LINKS (SPIKE)  
BASSWOOD 14" N16°E 131.4 LINKS, SCRIBED "SC BT"

1998 - PLAT OF RIGHT OF WAY, WISDOT PROJECT NO. 9261-03-23, SURVEY SPIKE IN CENTERLINE OF HWY 32.

CORNER WAS: (CHECK ALL THAT APPLY)

RESTORED THROUGH ACCEPTANCE OF AN OBLITERATED LOCATION

RESTORED THROUGH ACCEPTANCE OF A FOUND PERPETUATED LOCATION

CONSIDERED A LOST CORNER AND REESTABLISHED THROUGH LOST CORNER PROPORTIONATE METHODS (INCLUDING A PLAN VIEW DRAWING SHOWING DISTANCES AND DIRECTIONS TO OTHER PUBLIC LAND SURVEY CORNERS USED FOR PROPORTIONING AND DETERMINING THE CORNER LOCATION)

RESTORED OF REESTABLISHED IN A LOCATION THAT DIFFERS FROM A PREVIOUS RESTORATION OF REESTABLISHMENT (INCLUDE A PLAN VIEW DRAWING AND INDICATE WHAT WAS SET AND/OR FOUND)

DESCRIBE THE MONUMENT AND ACCESSORIES USED TO PERPETUATE THE LOCATION OF THIS CORNER. (INCLUDE A PLAN VIEW DRAWING AND INDICATE WHAT WAS SET AND/OR FOUND)

CORNER WAS REMOVED DURING CONSTRUCTION. CORNER WAS RESET WITH A SURVEY SPIKE USING DISTANCE INTERSECTION OF EXISTING WITNESS MONUMENT AND EXISTING R/W CORNERS ESTABLISHED AS PART OF THE PLAT OF RIGHT OF WAY, WISDOT PROJECT NO. 9261-03-23.

FOUND THE FOLLOWING WITNESSES:

3" ALUMINUM WITNESS MONUMENT S88°E 33.00 FEET

SET THE FOLLOWING WITNESSES:

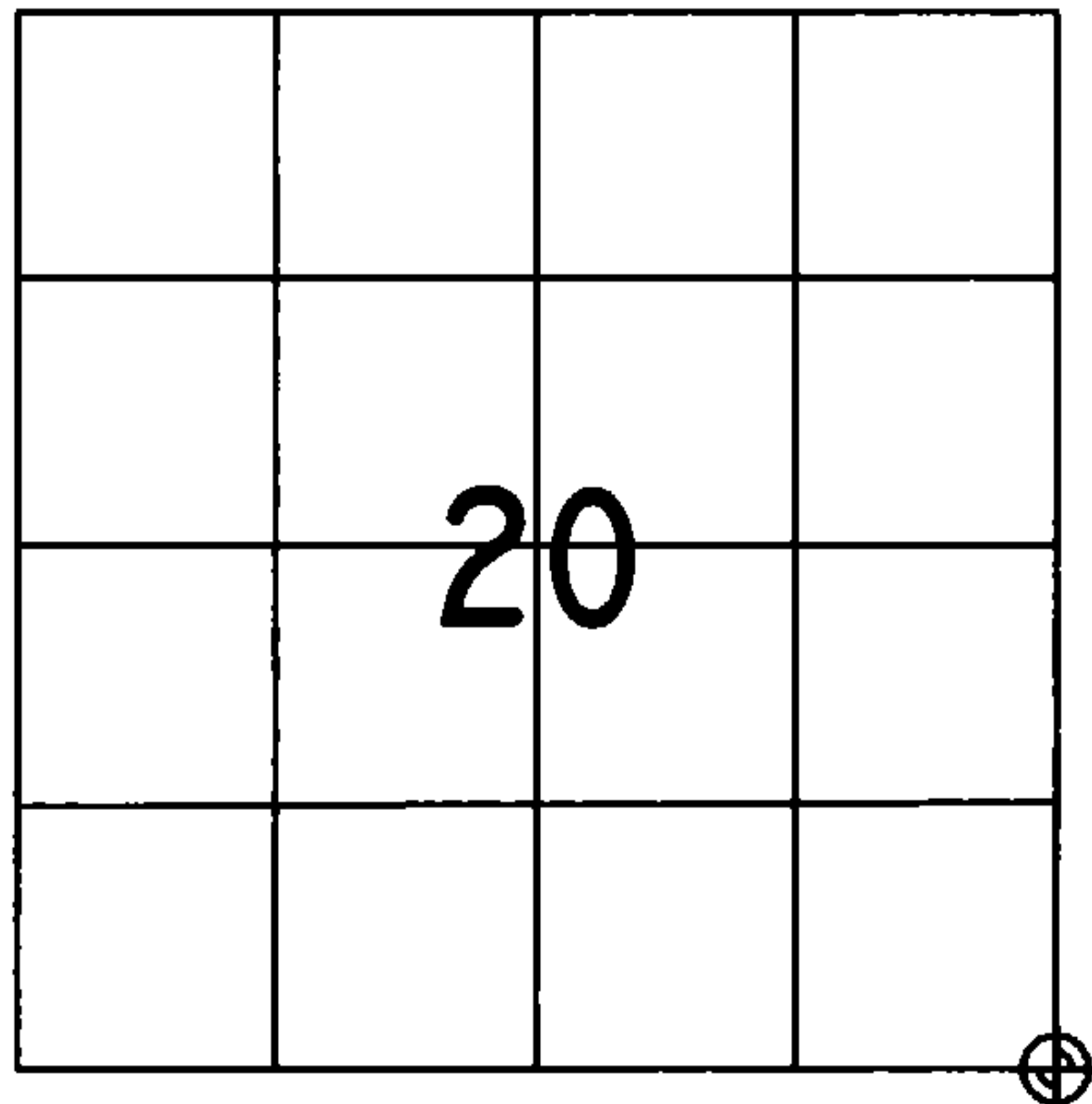
1" IRON PIPE w/ CEC CONTROL CAP S34°E 57.27 FEET

1" IRON PIPE w/ CEC CONTROL CAP N32°W 40.85 FEET

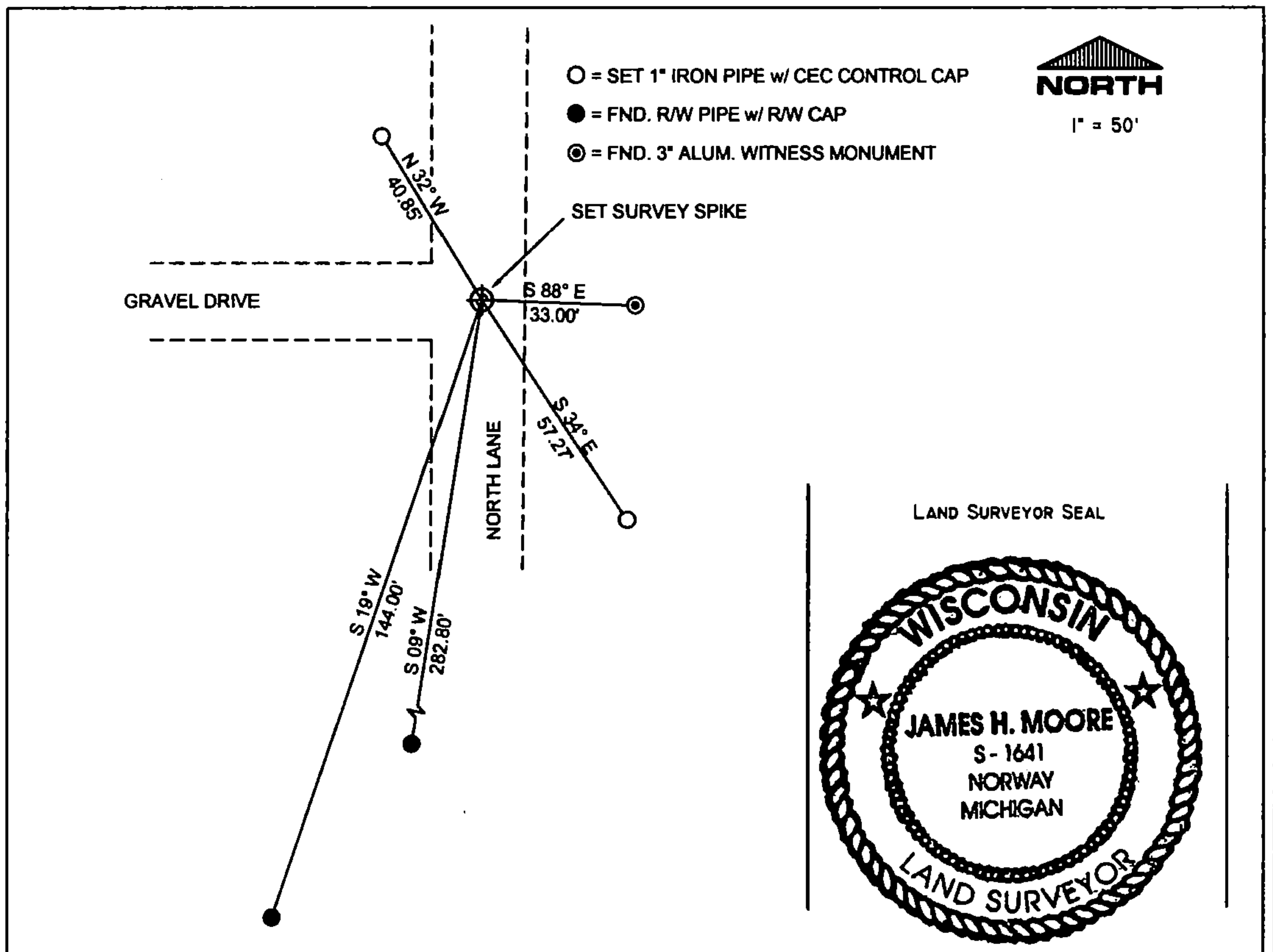
FND. R/W PIPE w/ R/W CAP S09°W 282.80 FEET

FND. R/W PIPE w/ R/W CAP S19°W 144.00 FEET

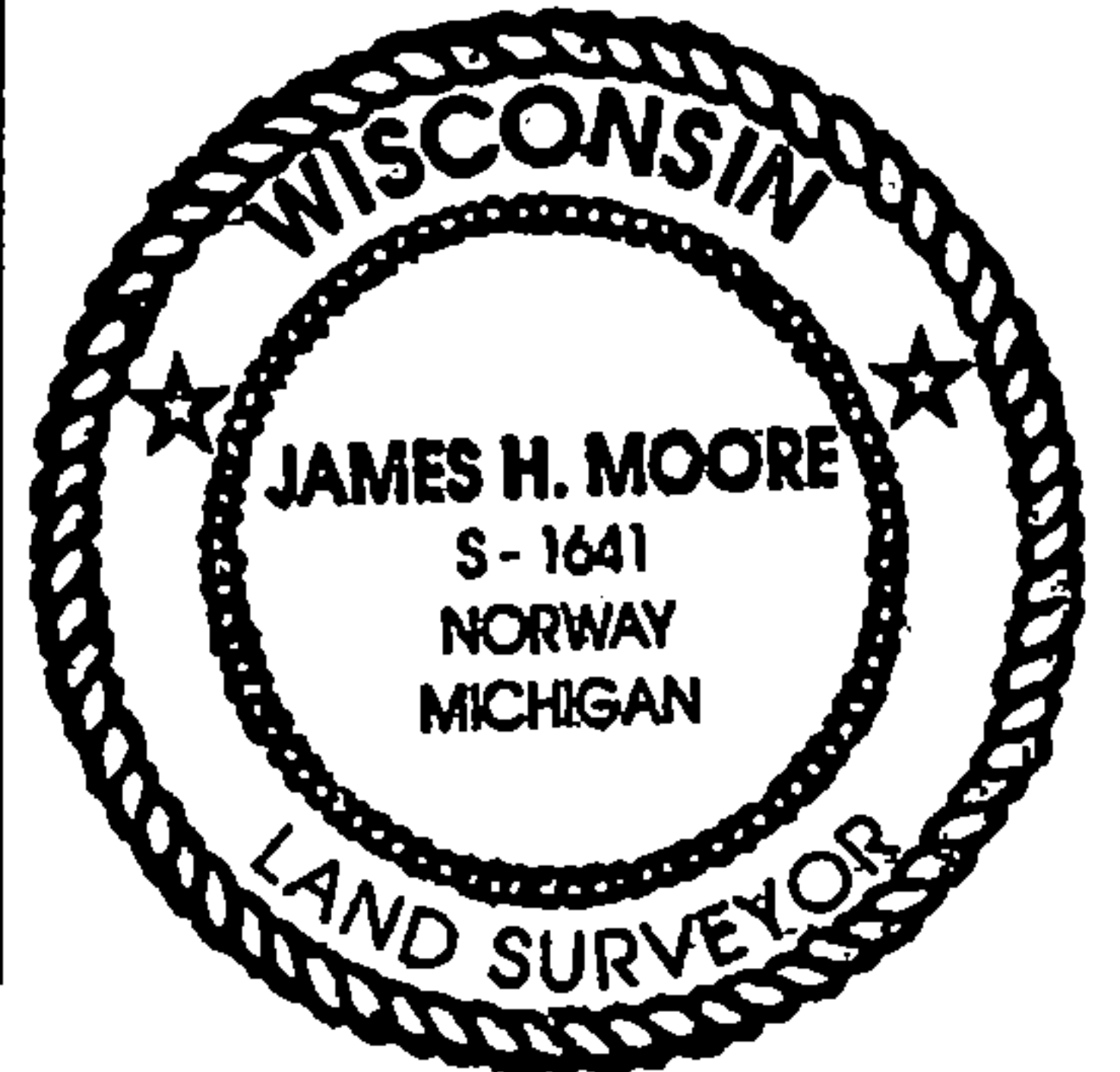
THE SOUTHEAST  
CORNER OF SECTION 20,  
T. 37 N., R. 13 E.,  
FOREST COUNTY, WISCONSIN



⊕ = LOCATION OF CORNER



LAND SURVEYOR SEAL



I, JAMES H. MOORE PS S-1641

(TYPE OR PRINT NAME) CERTIFY THAT THE CORNER LOCATION SHOWN ON THIS ABOVE RECORD WAS DETERMINED BY ME OR UNDER MY DIRECTION AND CONTROL AND THAT THIS U.S. PUBLIC LAND SURVEY MONUMENT RECORD IS CORRECT AND COMPLETE TO THE BEST OF MY KNOWLEDGE AND BELIEF.

INDEX No. R-9

SIGNATURE

DATE

5-15-08

43713200000

R-9