

U.S. PUBLIC LAND SURVEY MONUMENT RECORD

Index No. N-3

State of Wisconsin }
County of Forest } ss.

I, Gary L. Pisoni, do hereby certify that on the 1st day of March, 1993, I found evidence of the South Quarter corner of Section 18 Township 37, North, Range 13 East, Fourth Principal Meridian, as described hereon; and that from this evidence I established a new monument and accessories as described hereon to perpetuate the original location of this corner.

Resident witnesses:

.....
.....
.....

History of original corner establishment:

Original Government Survey in 1865 by J.L. Nowlin. East corrected between Sections 18 and 19, at 40.80 chains, set Quarter Corner Post, from which the following bear;

Sugar	20"	N16°E	20 lks.
Birch	15"	S04°W	15 lks.

Description of corner evidence found:

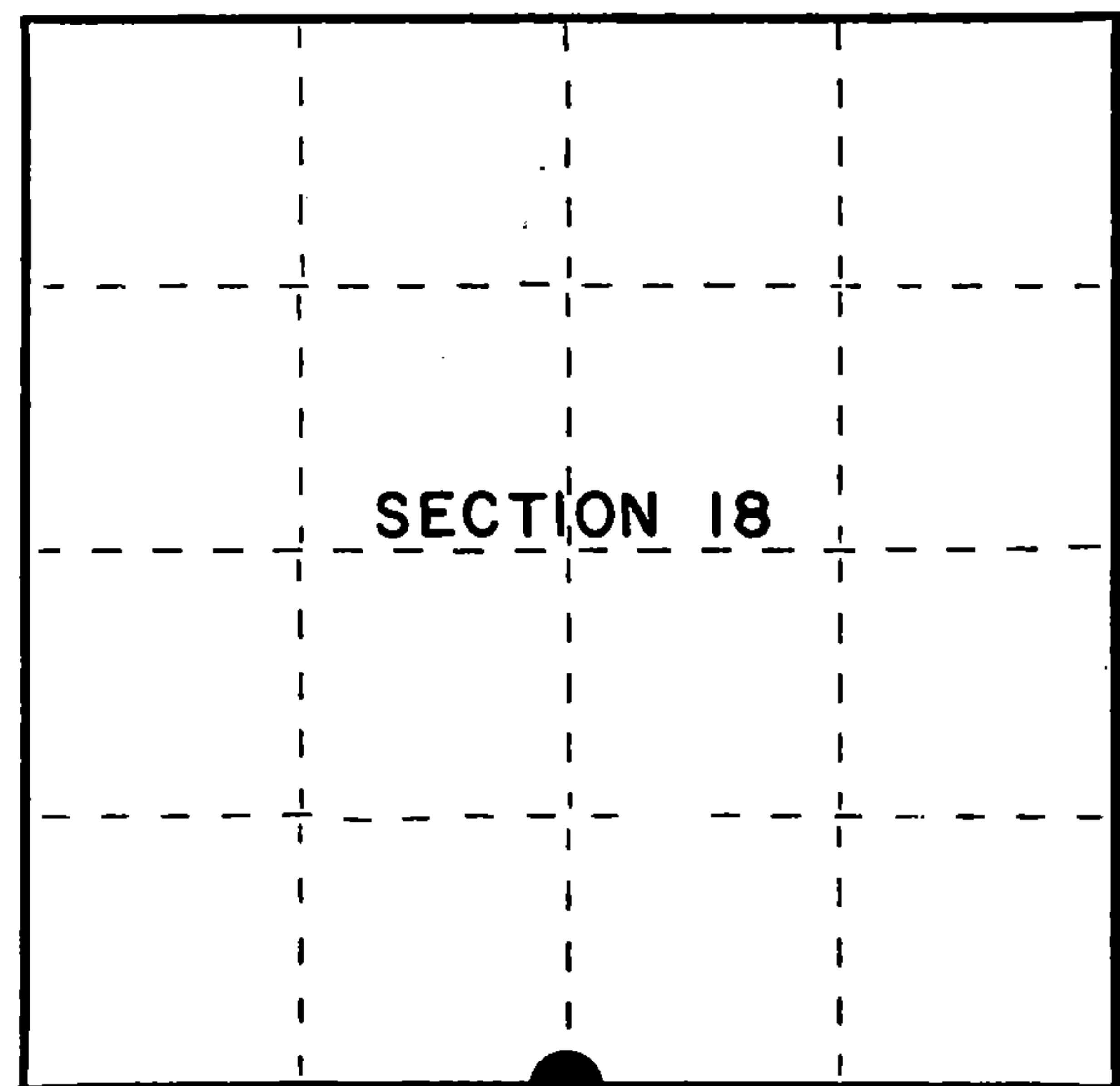
Found town roads running East-West and North from the road intersection. Also found farmers fence lines to agree with the road intersection.

I accept the road intersection as the best available evidence for restoring the corner position.

No evidence of original post or bearing trees was found.

Description of monument and accessories I established to perpetuate the original location of this corner. At the corner point, set a 2½ inch diameter aluminum pipe monument, 3 feet long, 4 inches below the road surface, with an aluminum cap stamped; T37N, R13E, 1/4, S18 S19, 1993, S-1634. From which the following new blazed and scribed bearing trees bear. (Measurements taken to a nail in side of tree)

Basswood	15"	N75°W	74.62 feet
Utility Pole #3713-19E4		S36°E	34.98 feet
	10-A		
Ref. Monument	2½"x36"	S00°-36'-28"E	27.63 feet
Steel Sign Post		S00°-36'-28"E	28.30 feet



● = Corner monument restored.

Dated at Iron River, MI, this 22nd day of April, 1993

Signature Gary L. Pisoni Title Land Surveyor Registration No. S-1634
(County Surveyor, Registered Land Surveyor, or other duly authorized official)

Office of Register of Deeds, County of Forest, I hereby certify that the within instrument was filed in this office for record on the 12th day of August, 1993 at 1:25 o'clock P M.

.....
(Register of Deeds)
By [Signature] Deputy

FORM NO. 985-A



Stock No. 26273
DOCUMENT NUMBER
148158

43713180020

(e) Describe any material discrepancy between the location of the corner as restored or reestablished and the location of that corner as previously restored or reestablished by distance and direction. Show the discrepancy on the plan view drawing under (d), above. Show the distances between the corner as previously restored or reestablished and (1) the corner as restored or reestablished, and (2) to at least 2 of the witness monuments shown on the drawing in (d), above.

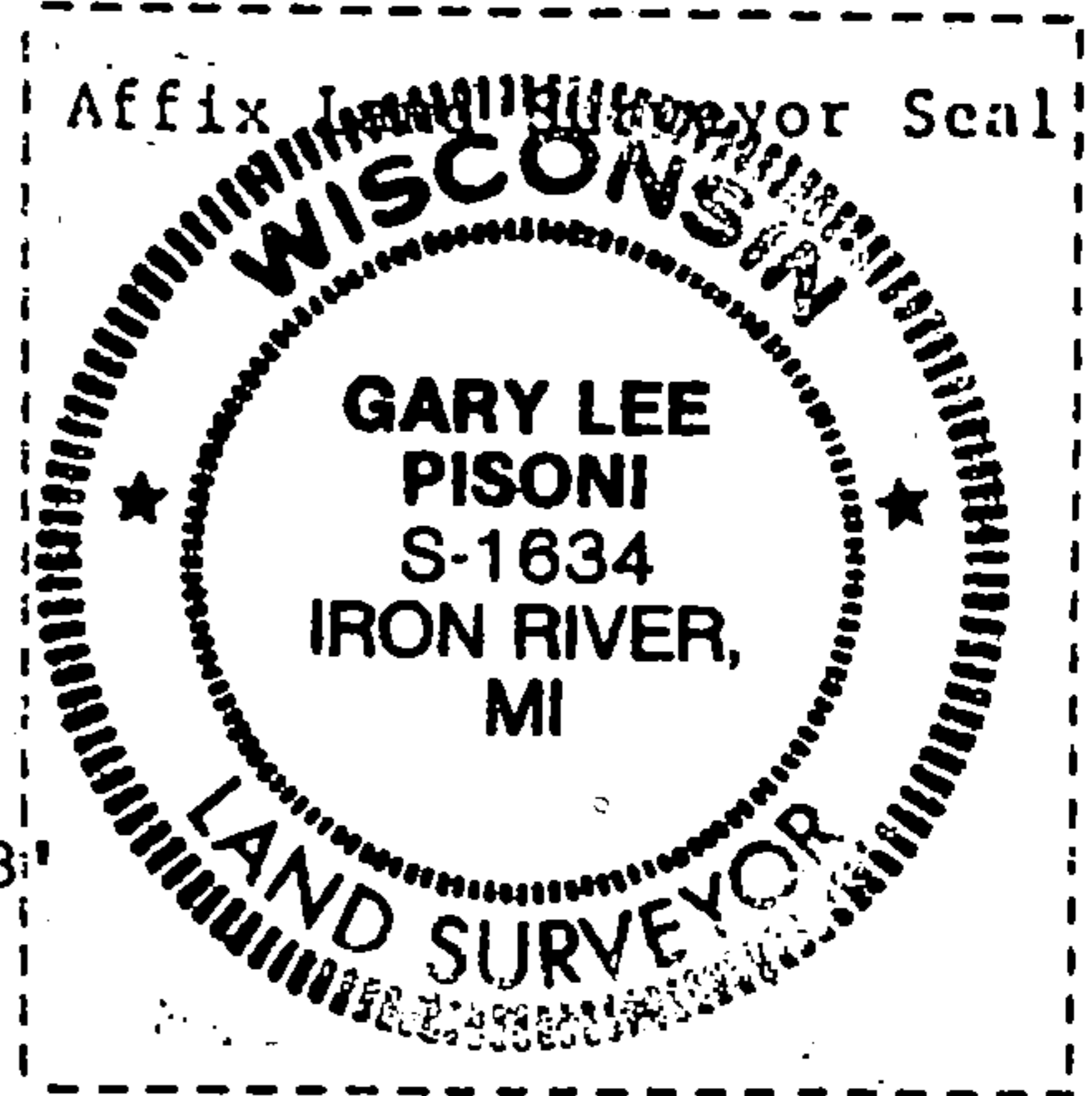
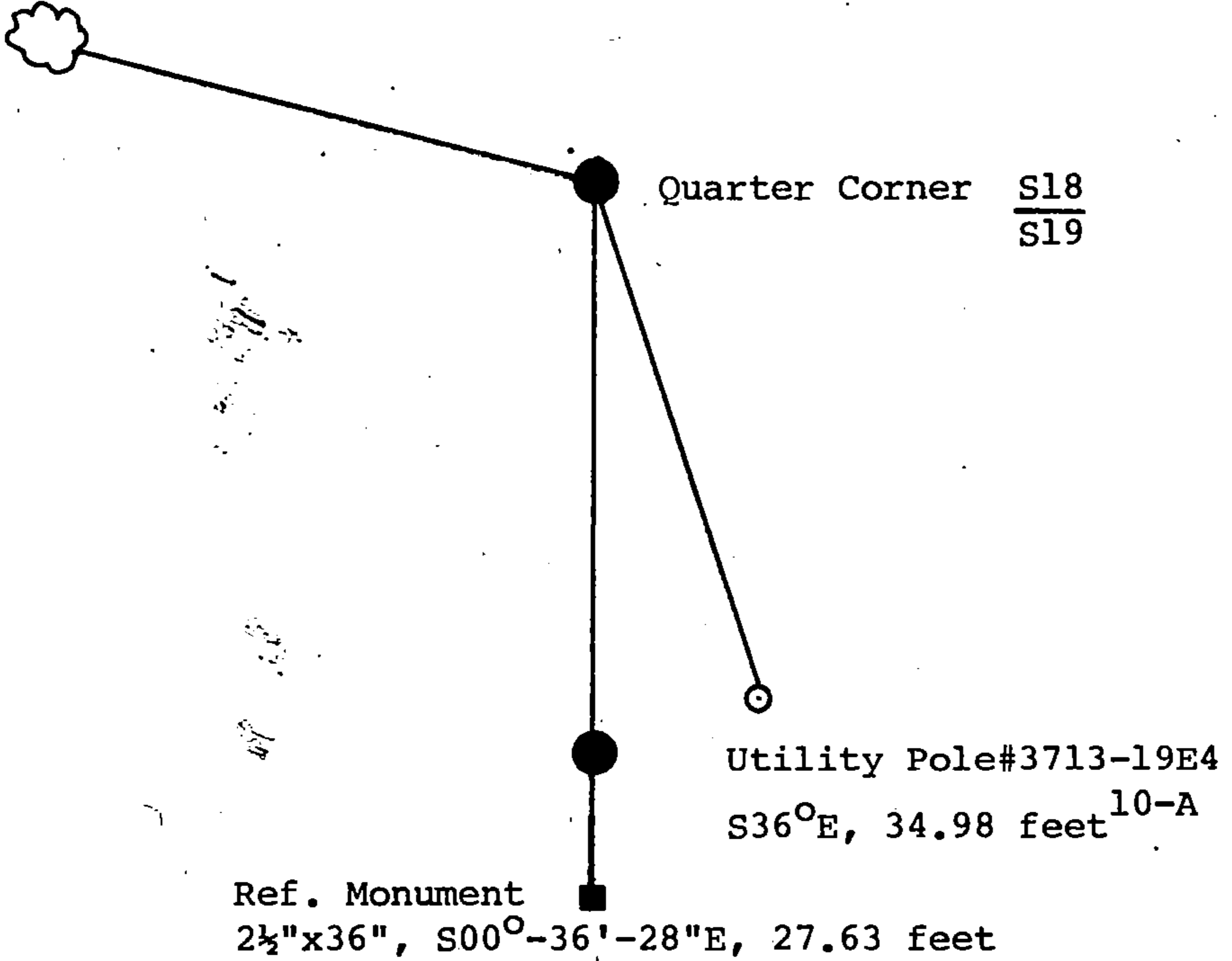
See drawing below.

(f) Was the corner restored through acceptance of (1) an obliterated evidence location, or, (2) a found perpetuated location?

Restored from accepted evidence.

(g&h) Was the corner reestablished through lost corner proportionate methods? If so, show the method, including the directions and distances to other public land survey corners used as evidence or used for proportioning in determining the corner location?

15" Basswood(NBT)
N75°W, 74.62 feet



(i) I, Gary L. Pisoni Steel Sign Post, S00°-36'-28"E, 28.3'
(type or print name) certify that the corner location shown on this record was determined by me or under my direction and control and that this U.S. Public Land Survey Monument Record is correct and complete to the best of my knowledge and belief.

Gary L. Pisoni June 25, 1993
Signature Date

Survey requested by: Sue Vap 8/12/93
District Ranger Date