

U.S. PUBLIC LAND SURVEY MONUMENT RECORD

Index No. J-9

State of Wisconsin }
 County of Forest } ss.

I, Gary L. Pisoni, do hereby certify that on the 1st day of March, 1993, I found evidence of the Northwest Section corner of Section 16 Township 37, North, Range 13 East, Fourth Principal Meridian, as described hereon; and that from this evidence I established a new monument and accessories as described hereon to perpetuate the original location of this corner.

Resident witnesses:

History of original corner establishment:

Original Government Survey in 1865 by J.L. Nowlin. North between Sections 16 and 17, at 80.00 chains, set Section Corner Post to Sections 8,9, 16 and 17, from which the following bear;

Birch	12"	N58°W	20 lks.
Cedar	10"	N60°E	10 lks.

Description of corner evidence found:

No original corner evidence was recovered. No other corner evidence was recovered.

According the USFS Form #874 dated 1936-37, the corner position is in the center-line of a North-South woods road.

I re-established the corner position in the center-line of the North-South woods road and at proportionate distance between the Northwest Section Corner of Section 9 and the West Quarter Corner of Section 21.

Description of monument and accessories I established to perpetuate the original location of this corner.

At the corner position, set a 2½ inch diameter aluminum pipe monument, 3 feet long, 6 inches below the surface of the road, with an aluminum cap stamped; T37N, R13E, S8, S9, S16, S17, 1993, S-1634. From which the following new blazed and scribed bearing trees bear; (Measurements taken to a nail in side of tree)

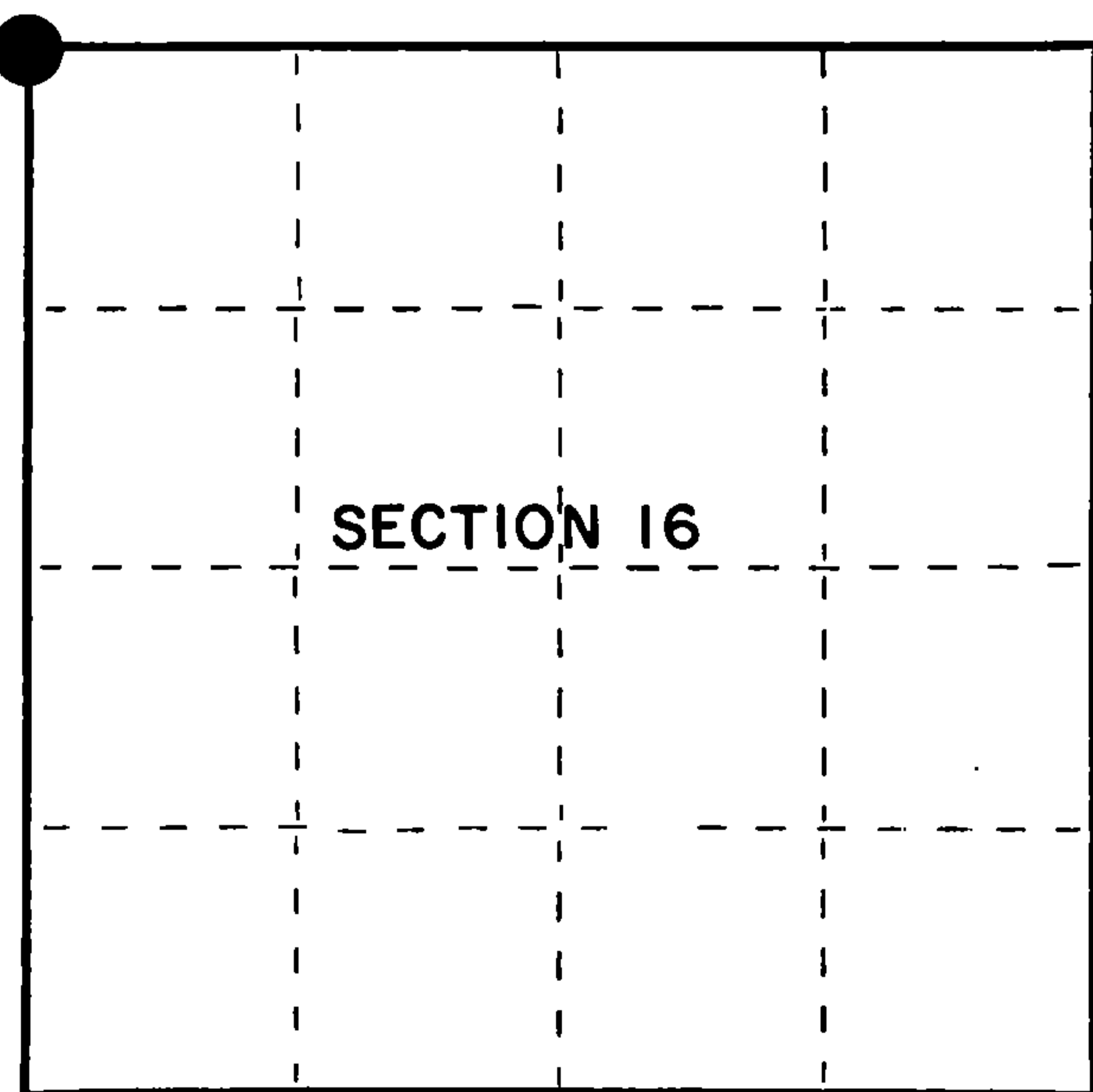
Ash	7"	N 49°E	29.37 feet
Ash	14"	S 86°E	21.16 feet
Red Maple	8"	S 68°W	28.44 feet
Ash	7"	N 45°W	43.76 feet
Steel Sign Post		West	15.03 feet

Dated at Iron River, MI, ~~Wis~~, this 22nd day of April, 1993

Signature Gary L. Pisoni Title Land Surveyor Registration No S-1634
 (County Surveyor, Registered Land Surveyor, or other duly authorized official)

Office of Register of Deeds, County of Forest, I hereby certify that the within instrument was filed in this office for record on the 12th day of August, 1993 at 1:25 o'clock P M.

By [Signature] (Register of Deeds) Deputy



● = Corner monument restored.

FORM NO. 985-A

H.C. Muller Company

Stock No. 26273
 DOCUMENT NUMBER
 148153

43713080000

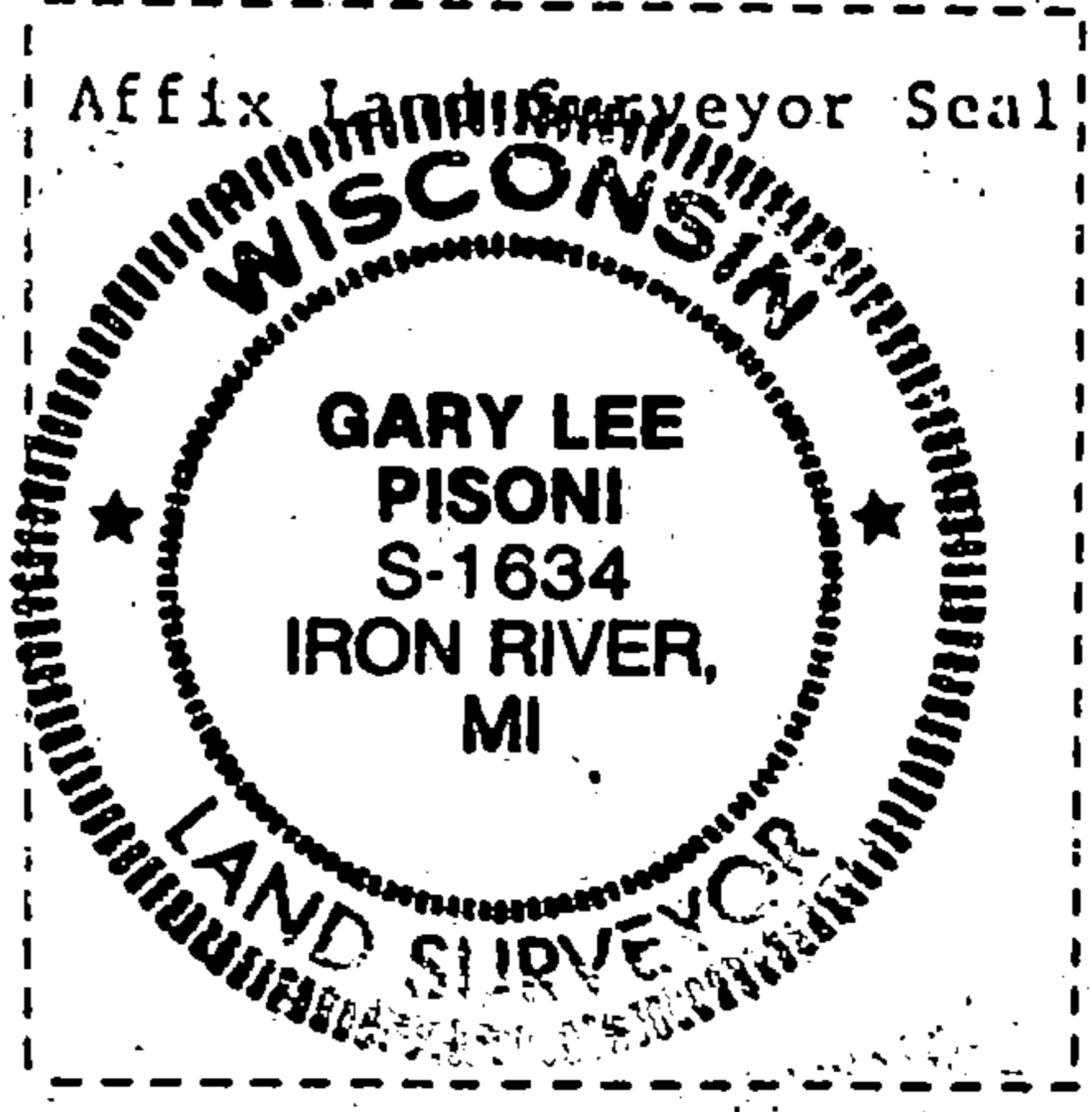
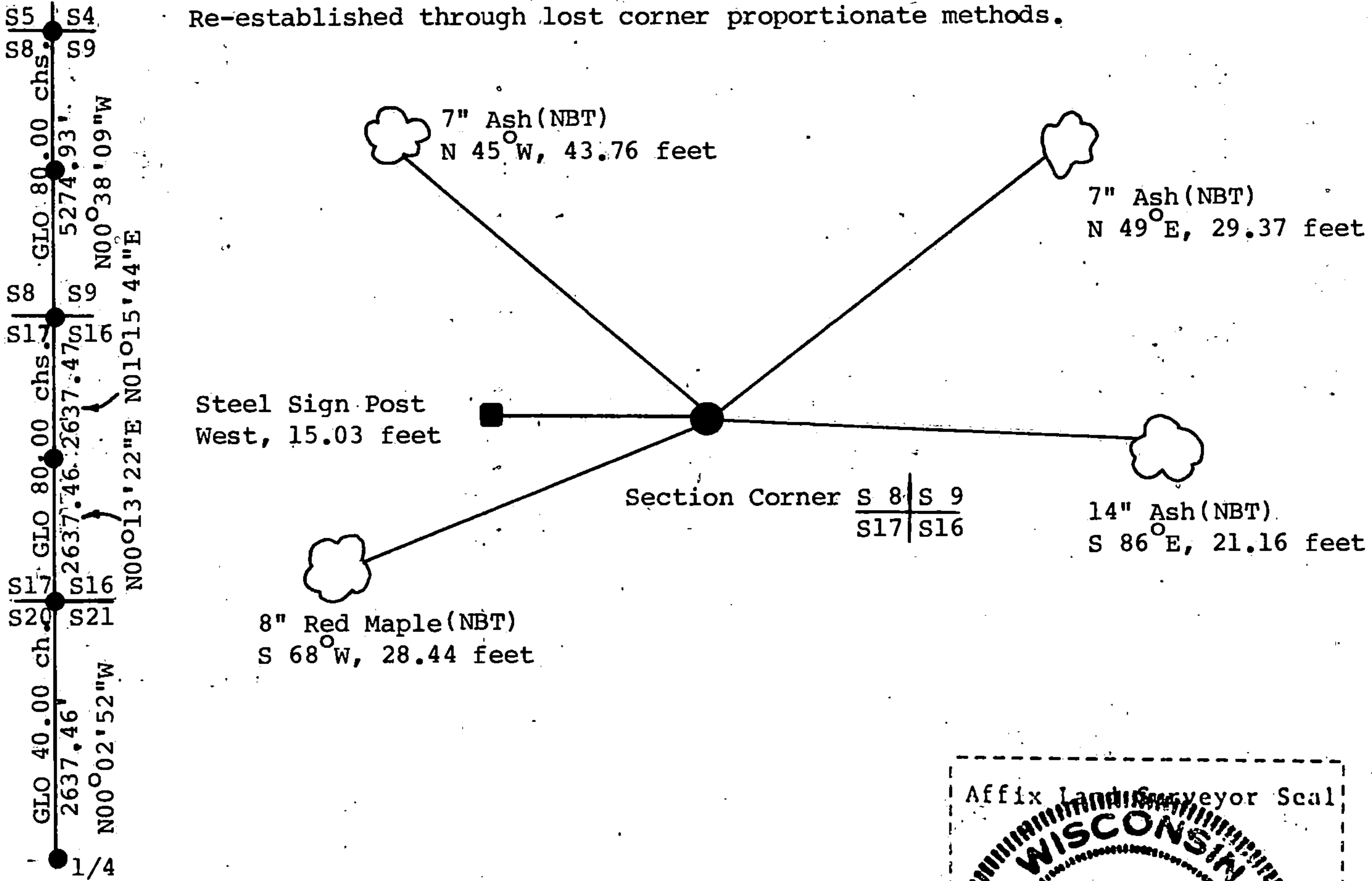
(e) Describe any material discrepancy between the location of the corner as restored or reestablished and the location of that corner as previously restored or reestablished by distance and direction. Show the discrepancy on the plan view drawing under (d), above. Show the distances between the corner as previously restored or reestablished and (1) the corner as restored or reestablished, and (2) to at least 2 of the witness monuments shown on the drawing in (d), above.

See drawing below.

(f) Was the corner restored through acceptance of (1) an obliterated evidence location, or, (2) a found perpetuated location?

(g&h) Was the corner reestablished through lost corner proportionate methods? If so, show the method, including the directions and distances to other public land survey corners used as evidence or used for proportioning in determining the corner location?

Re-established through lost corner proportionate methods.



(i) Gary L. Pisoni
 (type or print name) certify that the corner location shown on this record was determined by me or under my direction and control and that this U.S. Public Land Survey Monument Record is correct and complete to the best of my knowledge and belief.

Gary L. Pisoni Signature June 25 1993 Date

Survey requested by: Sue Vap District Ranger 8/12/93 Date