

U.S. PUBLIC LAND SURVEY MONUMENT RECORD

Index No. J-3

State of Wisconsin }
County of Forest } ss.

History of original corner establishment:
Original Government Survey in 1865 by J.L. Nowlin.

I Gary L. Pisoni, do hereby certify that on the 10th day of March, 1993, I found evidence of the North Quarter corner of Section 18 Township 37 North, Range 13 East, Fourth Principal Meridian, as described hereon; and that from this evidence I established a new monument and accessories as described hereon to perpetuate the original location of this corner.

In 1965-66 Jean Resvick, a Land Surveyor with the U.S. Forest Service, found the corner position marked by an iron pipe. In place of iron pipe, he set a 2 inch inside diameter by 5 foot long galvanized iron pipe with a brass cap stamped to identify the corner. He made the following corner references;

Table with 4 columns: Tree Name, Diameter, Bearing, Distance. Includes Maple (6" N80°E, 39.4 feet), Basswood (6" S40°W, 17.6 feet), Y. Birch (7" N76°W, 62.6 feet), and Steel Sign Post (North, 2.0 feet).

Description of corner evidence found:

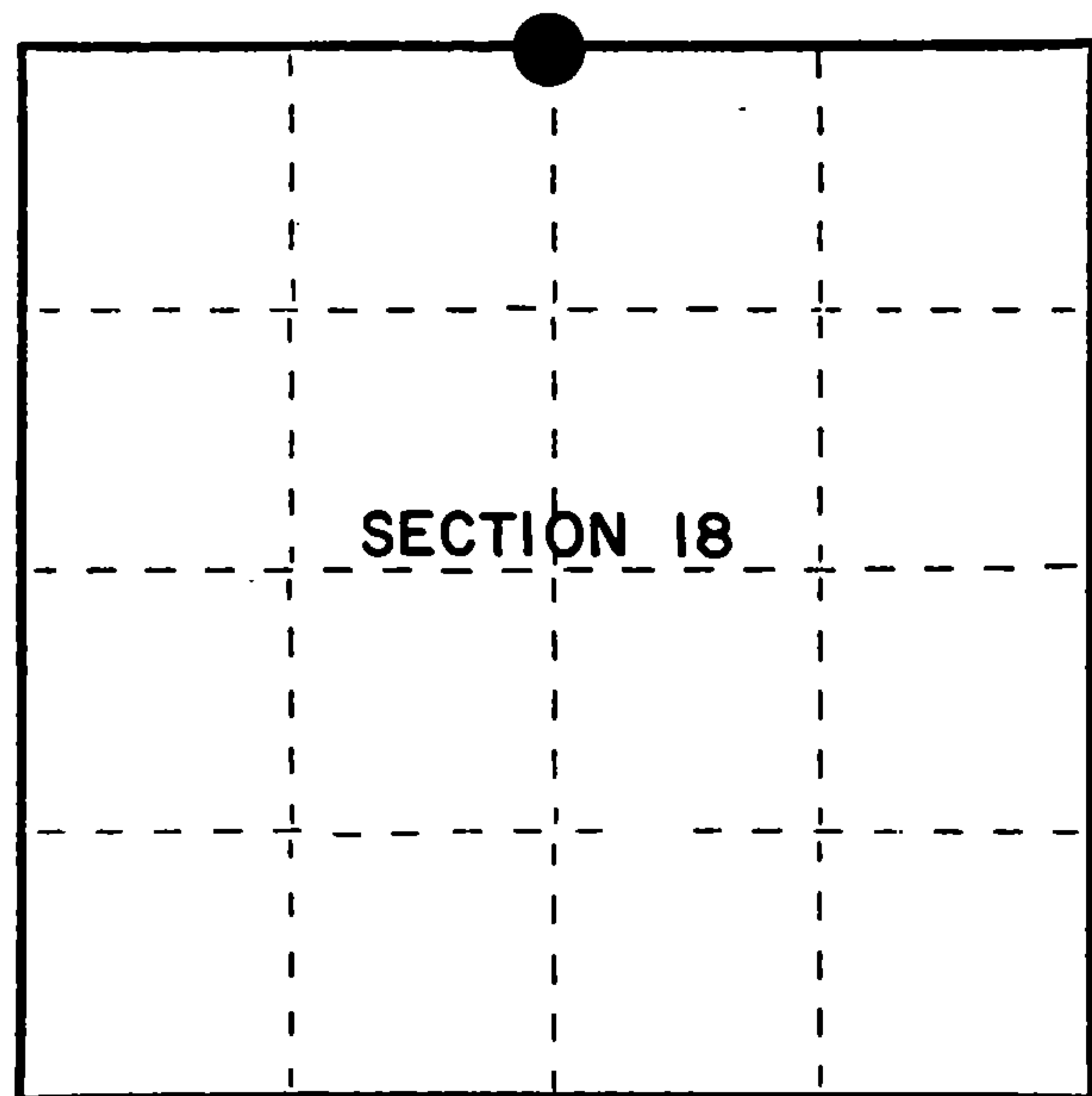
Found the monument as described and in place, from which the following bear;

Table with 4 columns: Tree Name, Diameter, Bearing, Distance. Includes Sugar Maple (14" N82°E, 39.36 feet), Basswood (11" S38°W, 17.60 feet), Y. Birch (13" N76°W, 62.65 feet), and Steel Sign Post (North, 2.00 feet).

Resident witnesses:

Description of monument and accessories I established to perpetuate the original location of this corner.

Painted existing bearing trees and attached B.T. signs to same.



● = Corner monument restored.

Dated at Iron River, MI, this 22nd day of April, 1993.

Signature Gary L. Pisoni Title Land Surveyor Registration No. S-1634

Office of Register of Deeds, County of Forest, I hereby certify that the within instrument was filed in this office for record on the 12th day of August, 1993 at 1:25 o'clock P.M.

By [Signature] Deputy (Register of Deeds)

FORM NO. 985-A

H.C. Mayer Company

Stock No. 26273
DOCUMENT NUMBER
148157

43713070020

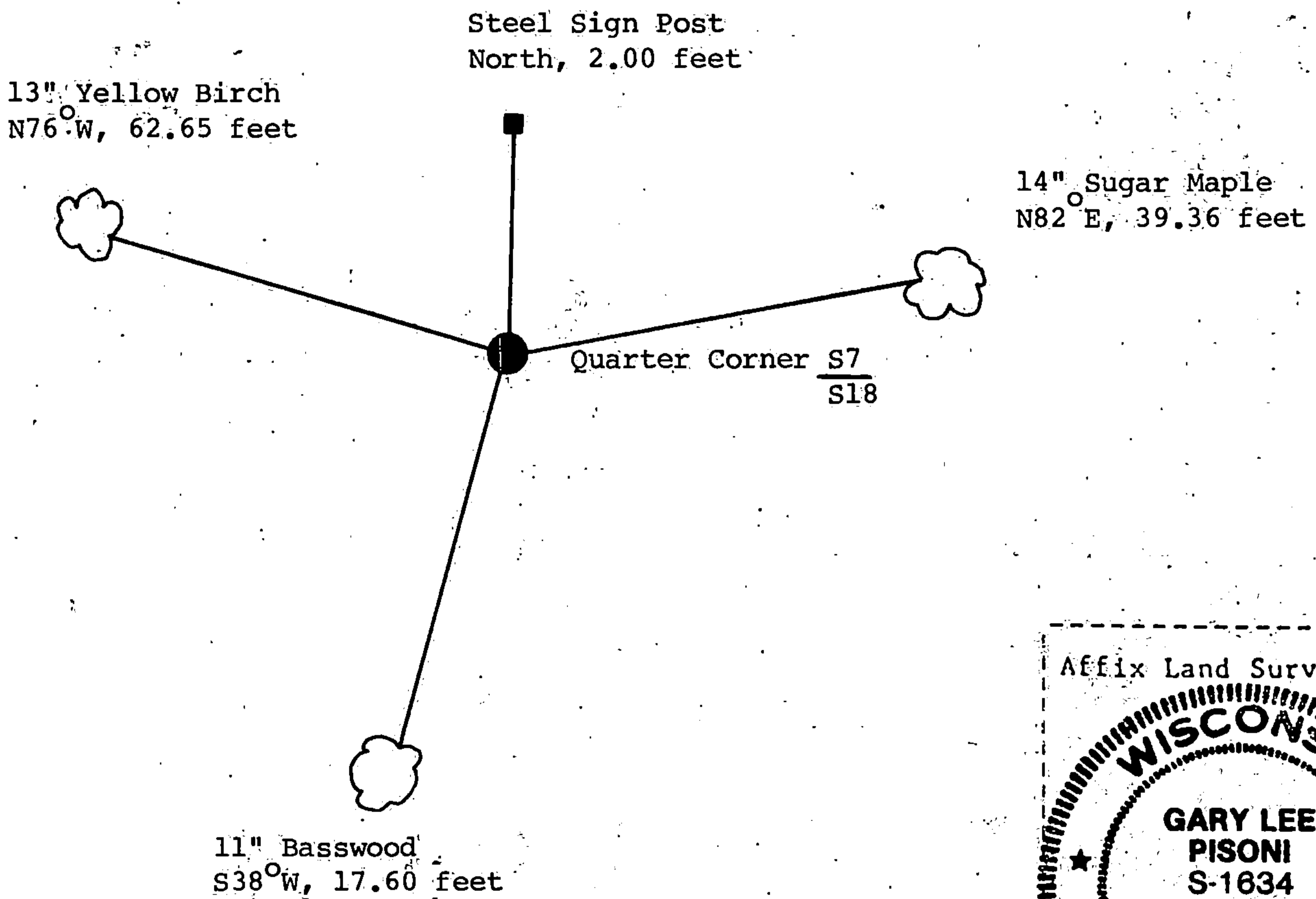
(e) Describe any material discrepancy between the location of the corner as restored or reestablished and the location of that corner as previously restored or reestablished by distance and direction. Show the discrepancy on the plan view drawing under (d), above. Show the distances between the corner as previously restored or reestablished and (1) the corner as restored or reestablished, and (2) to at least 2 of the witness monuments shown on the drawing in (d), above.

See drawing below.

(f) Was the corner restored through acceptance of (1) an obliterated evidence location, or, (2) a found perpetuated location?

Restored through acceptance of a found perpetuated location.

(g&h) Was the corner reestablished through lost corner proportionate methods? If so, show the method, including the directions and distances to other public land survey corners used as evidence or used for proportioning in determining the corner location?



(i) Gary L. Pisoni
(type or print name) certify that the corner location shown on this record was determined by me or under my direction and control and that this U.S. Public Land Survey Monument Record is correct and complete to the best of my knowledge and belief.

Gary L. Pisoni Signature June 25, 1993 Date

Survey requested by: Sue Vap District Ranger 8/12/93 Date