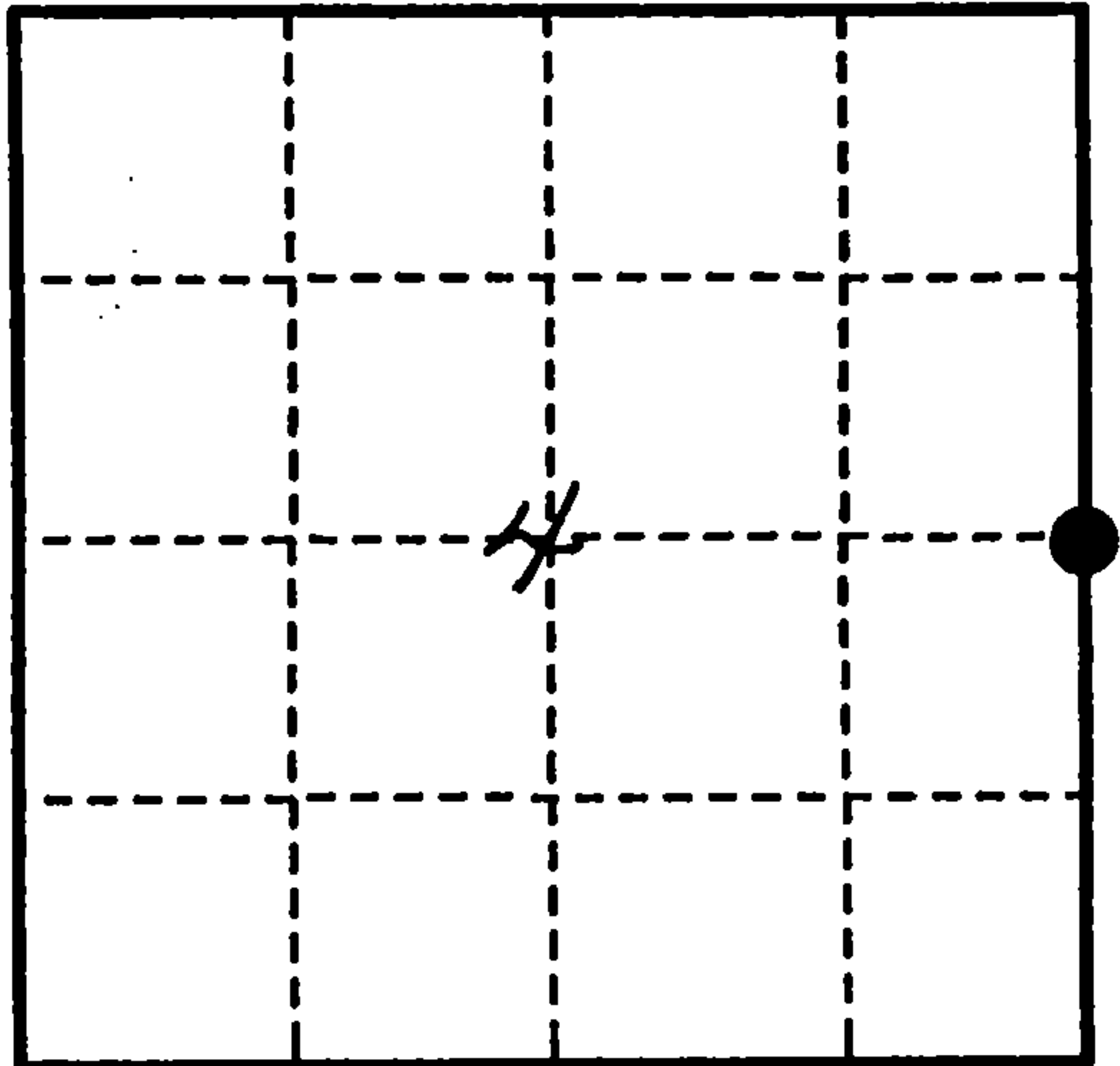


U. S. PUBLIC LAND SURVEY MONUMENT RECORD

INSTRUCTIONS: This record shall show the location of the corner and shall include all of the following nine elements (a through i).

- (a) Identify the corner by reference to the U.S. public land survey system.
- - Corner monument restored.

Quarter Corner to Sections 3 & 4,  
T.37N., R.13E., 4th P.M.



- (b) Describe any record evidence, monument evidence, occupational evidence, testimonial evidence or any other material evidence you considered, and whether the monument was found or placed.

Found Witness Corner East of Section Corner with two BTs in good condition. One BT dead and down.

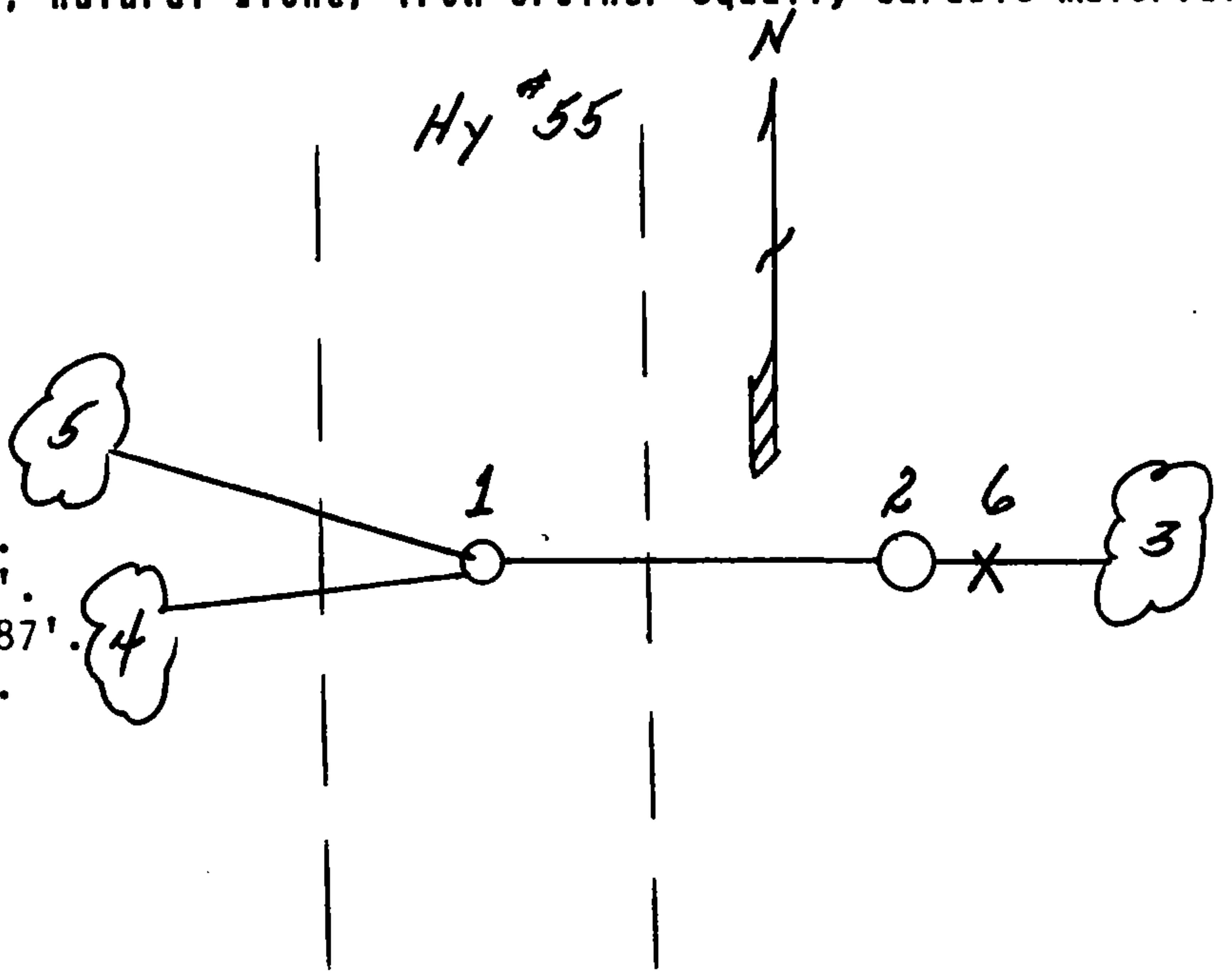
We made new BT: Sugar Maple, 5", East, 60.30'.

This corner was restored by Cochrane in 1980.

- (c) In the plan view drawing below, provide reference ties to at least 4 witness monuments, or, if the location is within a municipality, to at least 2 witness monuments. (witness monuments shall be made of concrete, natural stone, iron or other equally durable material.)

- (d) Show a plan view drawing depicting the relevant monuments and reference ties which is sufficient in detail to enable accurate relocation of the corner monument if the corner monument is disturbed. Indicate north.

1. Metal under Blacktop highway.
2. W.C., East, 33:00'.
3. Sugar Maple, 5", East, 60.30'.
4. Red Maple, 6", S.84°W., 52.10'.
5. Balsam Fir, 10", N.74°W., 47.87'.
6. Steel sign post, East, 33.70'.



REGISTER'S OFFICE  
Forest County, Wis.  
Received for record this 9th day  
of March A.D., 1993 at  
2:15 o'clock A.M. and recorded  
in Vol. 37-13 Corner Restorations  
page 6-13  
John C. Hill, Deputy  
Register of Deeds

(a) Describe any material discrepancy between the location of the corner as restored or reestablished and the location of that corner as previously restored or reestablished by distance and direction. Show the discrepancy on the plan view drawing under (d). above. Show the distances between the corner as previously restored or reestablished and (1) the corner as restored or reestablished, and (2) to at least 2 of the witness monuments shown on the drawing in (d), above.

N/A

(f) Was the corner restored through acceptance of (1) an obliterated evidence location, or, (2) a found perpetuated location?

(2)

(g & h) Was the corner reestablished through lost corner proportionate methods? If so, show the method, including the directions and distances to other public land survey corners used as evidence or used for proportioning in determining the corner location?

N/A

(1) I, Milo E. Stefan  
(type or print name) certify that the corner location shown on this record was determined by me or under my direction and control and that this U.S. Public Land Survey Monument Record is correct and complete to the best of my knowledge and belief.



Milo E. Stefan  
Signature

November 20, 1992

Date

CERTIFICATE READY FOR FILING:

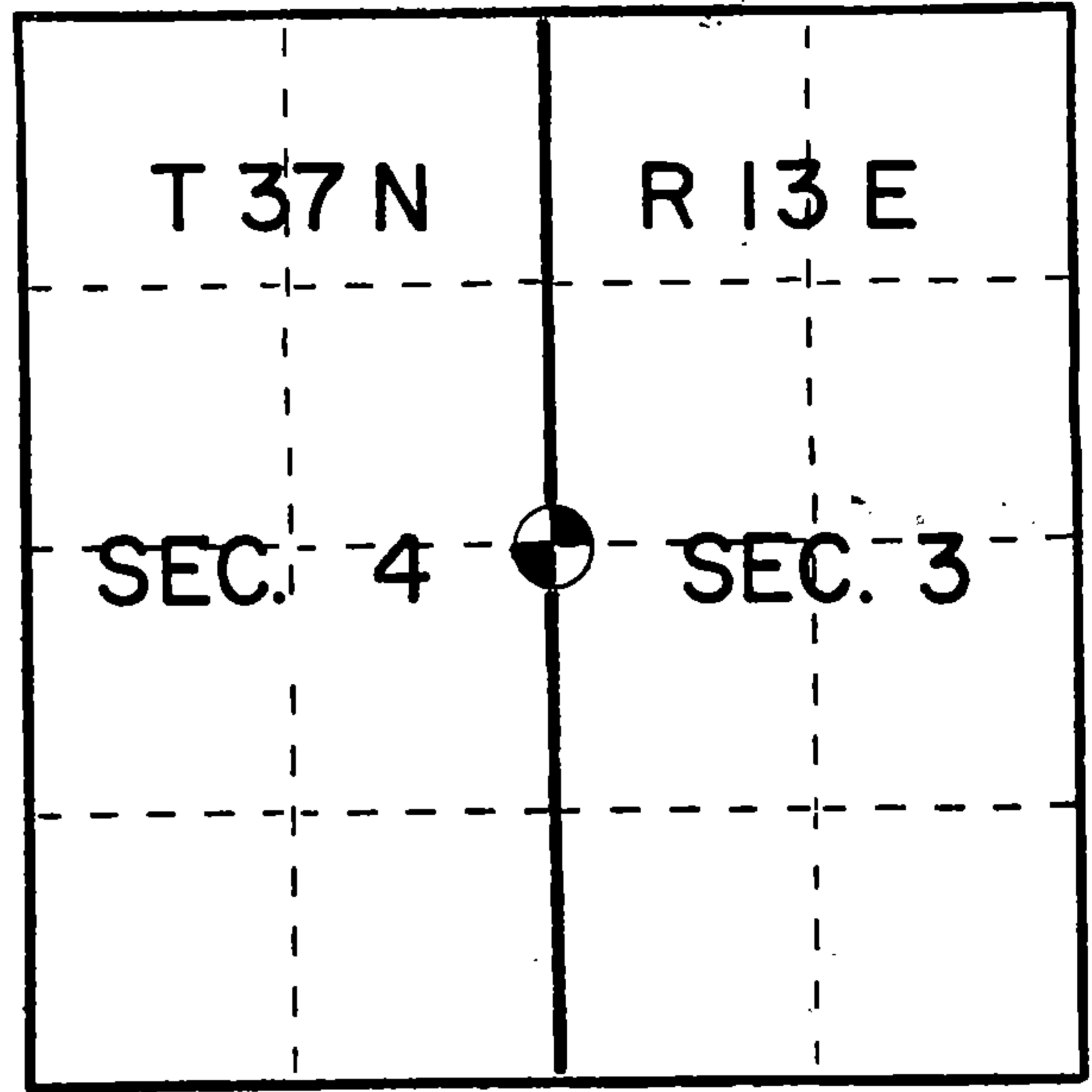
Dale R. Conroy  
Acting District Ranger

U. S. PUBLIC LAND SURVEY MONUMENT RECORD

INSTRUCTIONS: This record shall show the location of the corner and shall include all of the following nine elements (a through i).

- (a) Identify the corner by reference to the U.S. public land survey system.
- = Corner monument restored.

Quarter corner to Sections 3-4,  
T37N, R13E, Forest County, Wisconsin



- (b) Describe any record evidence, monument evidence, occupational evidence, testimonial evidence or any other material evidence you considered, and whether the monument was found or placed.

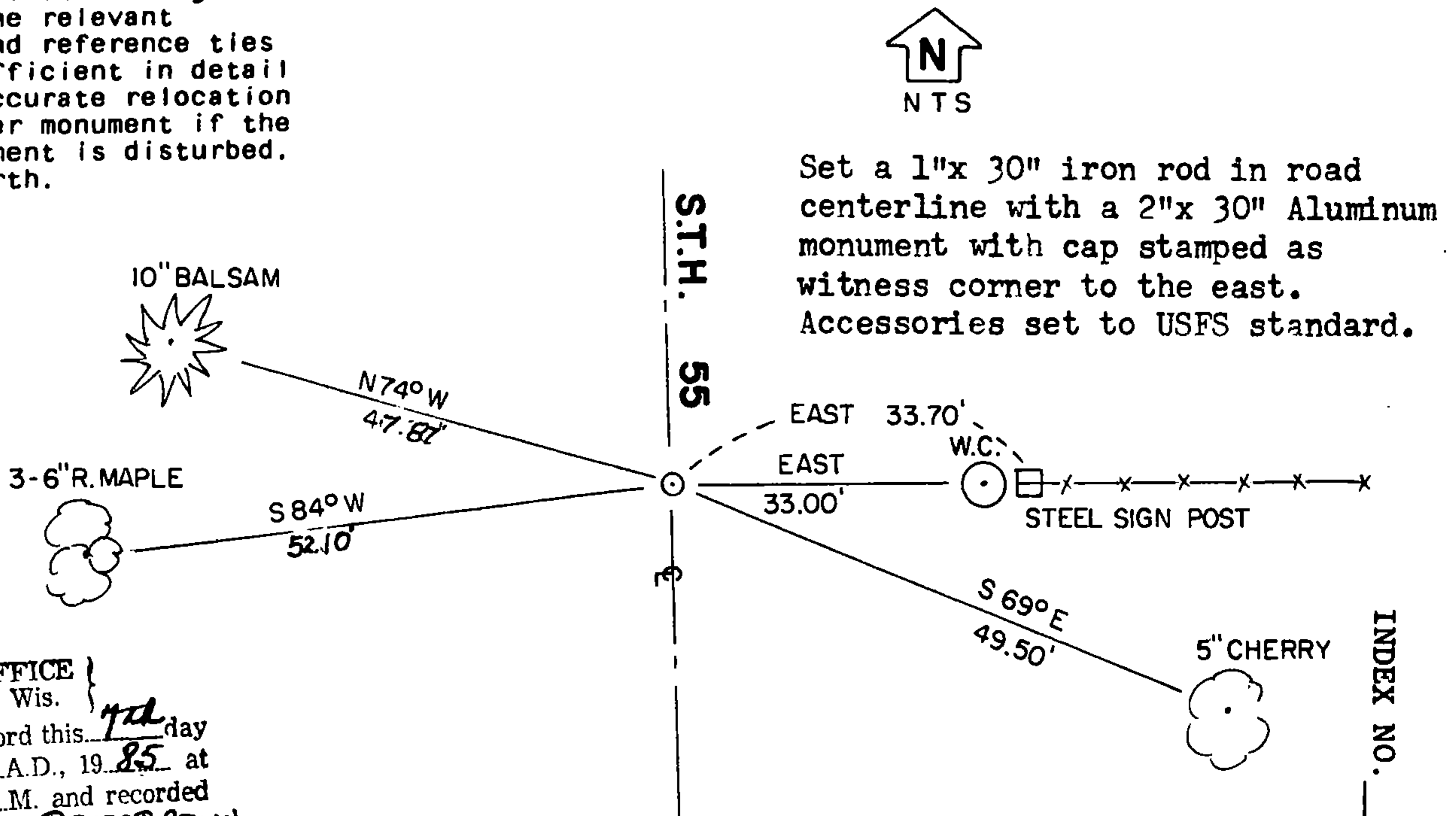
In 1865 Nowlin set a wood post with:

Fir 12" s18E 30 links  
Hemlock 8" N25W 20 links

Set a 1"x 30" iron rod in the centerline of Highway 55 and an east-west fence line intersection. Road construction destroyed original evidence and I set corner as per highway construction notes.

- (c) In the plan view drawing below, provide reference ties to at least 4 witness monuments, or, if the location is within a municipality, to at least 2 witness monuments. (Witness monuments shall be made of concrete, natural stone, iron or other equally durable material.) Describe witness monuments.

- (d) Show a plan view drawing depicting the relevant monuments and reference ties which is sufficient in detail to enable accurate relocation of the corner monument if the corner monument is disturbed. Indicate north.



REGISTER'S OFFICE  
Forest County, Wis.  
Received for record this 7th day  
of August A.D., 1985 at  
3:00 o'clock P.M. and recorded  
in Vol. CORNER RESTORATIONS  
page C-13  
Paul Aschenbrenner  
Register of Deeds

43713842000

INDEX NO.



(e) Describe any material discrepancy between the location of the corner as restored or reestablished and the location of that corner as previously restored or reestablished by distance and direction. Show the discrepancy on the plan view drawing under (d), above. Show the distances between the corner as previously restored or reestablished and (1) the corner as restored or reestablished, and (2) to at least 2 of the witness monuments shown on the drawing in (d), above.

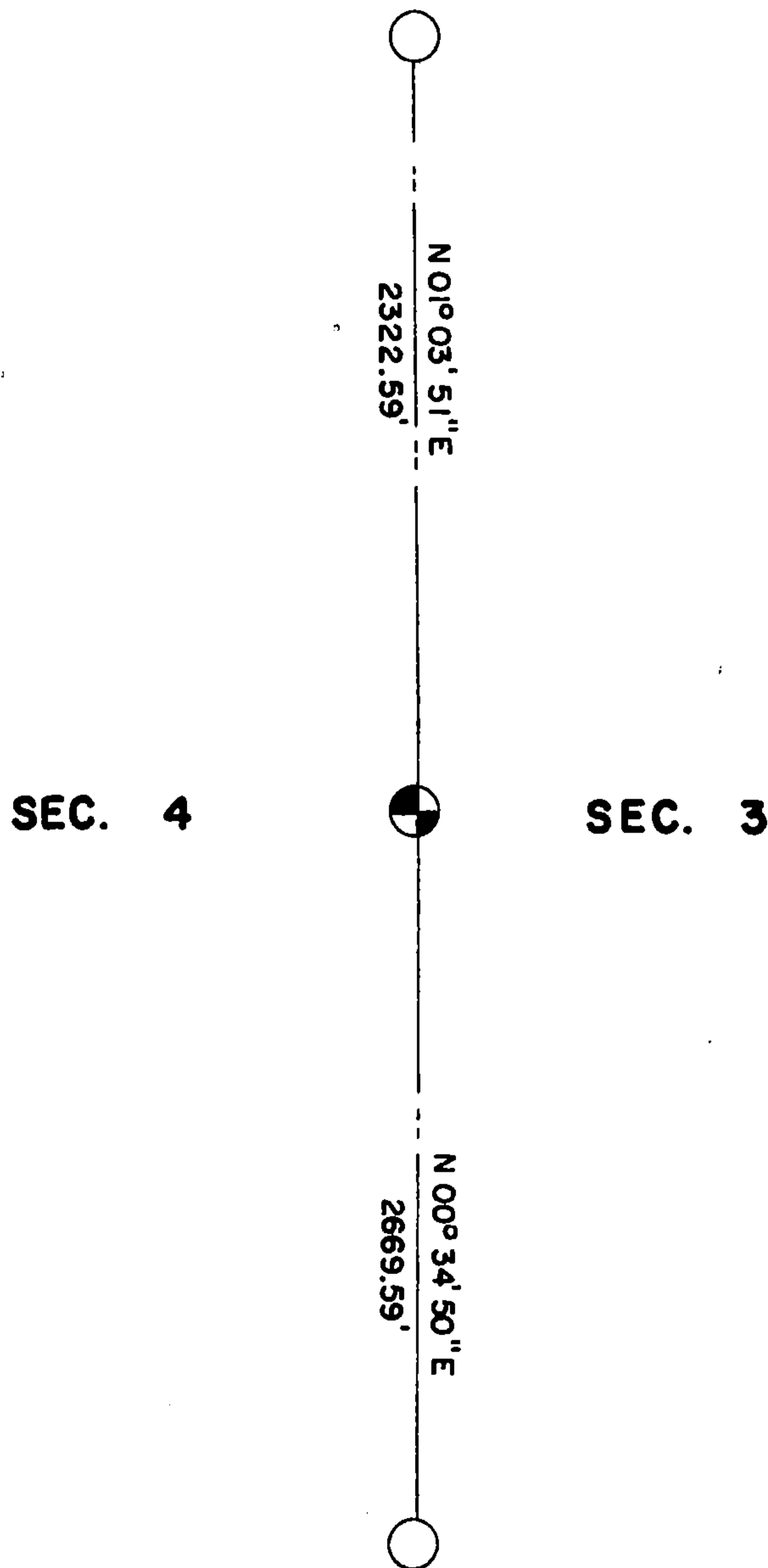
No discrepancy

(f) Was the corner restored through acceptance of (1) an obliterated evidence location, or, (2) a found perpetuated location?

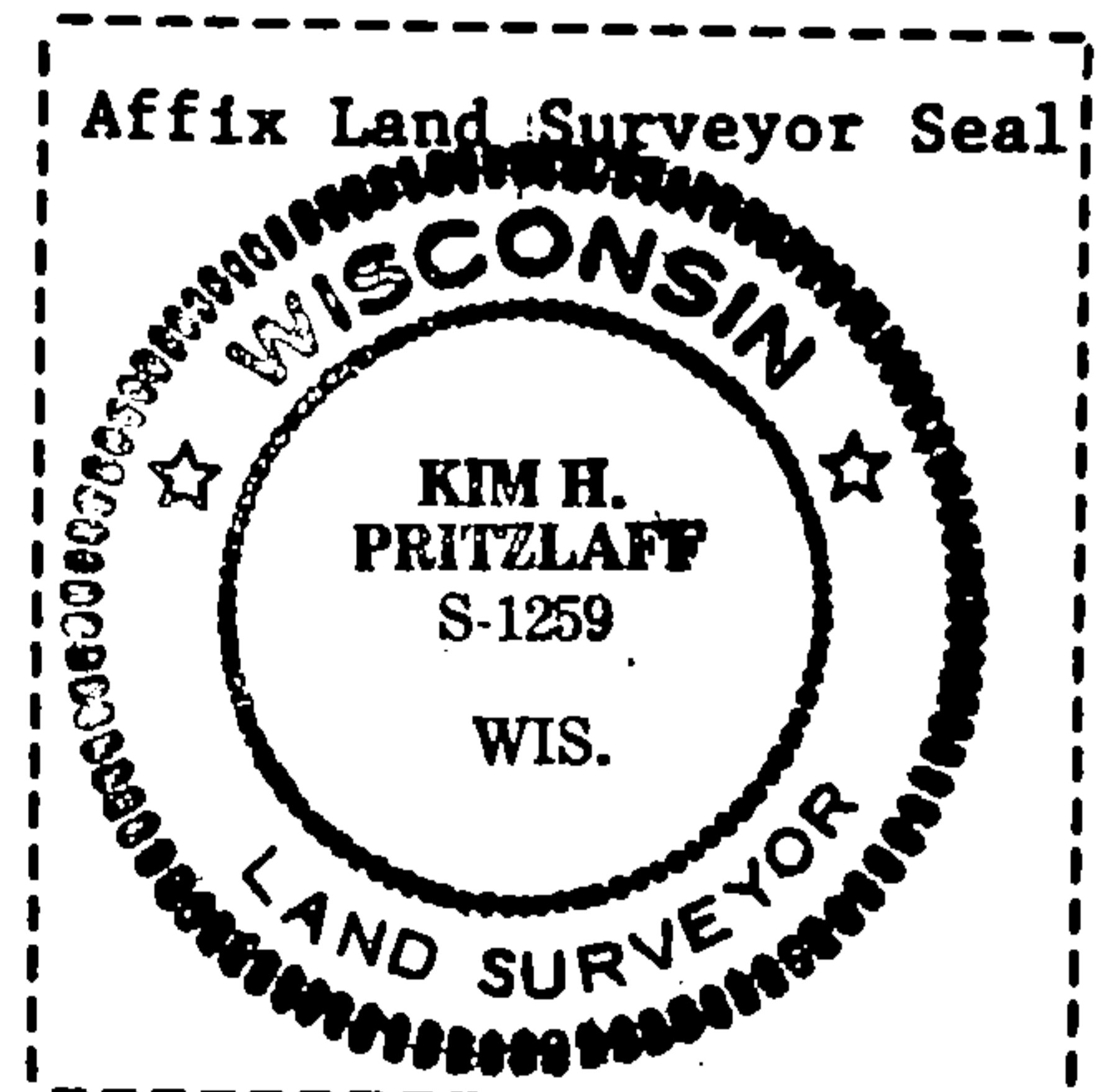
Found perpetuated location

(g&h) Was the corner reestablished through lost corner proportionate methods? If so, show the method, including the directions and distances to other public land survey corners used as evidence or used for proportioning in determining the corner location?

No



Kim H Pritzlaff



(i) I, Kim H Pritzlaff (type or print name) certify that the corner location shown on this record was determined by me or under my direction and control and that this U.S. Public Land Survey Monument Record is correct and complete to the best of my knowledge and belief.

Signature

Date

*Kim H Pritzlaff*

10-19-84