

U.S. PUBLIC LAND SURVEY MONUMENT RECORD

Index No. Z-7

State of Wisconsin }  
County of Forest } ss.

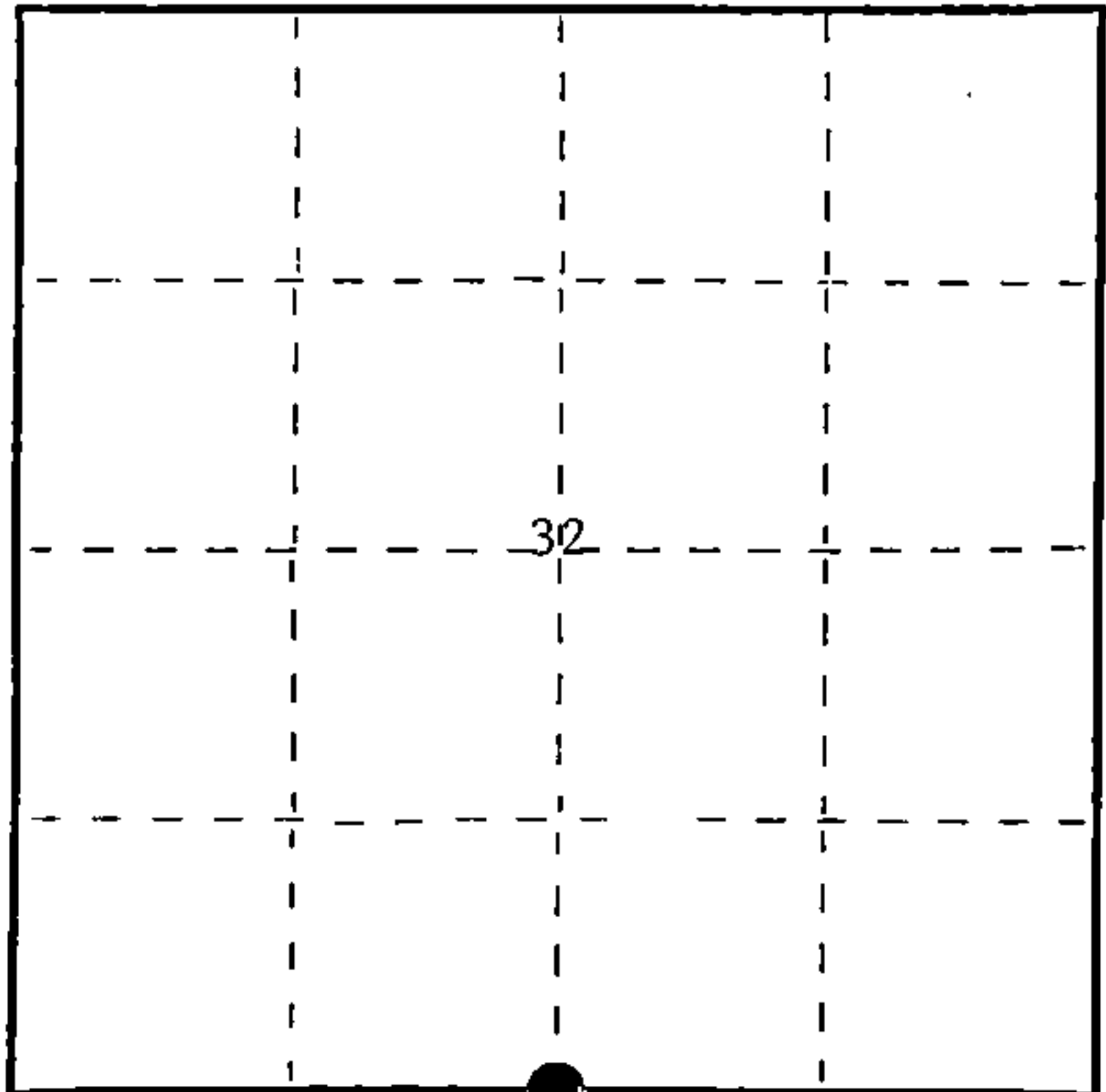
I Milo E. Stefan, do hereby certify that on the 13th day of March, 1989, I found evidence of the South Quarter corner of Section 32 Township 37 North, Range 12 East, Fourth Principal Meridian, as described hereon; and that from this evidence I established a new monument and accessories as described hereon to perpetuate the original location of this corner.

Resident witnesses:

Jeffrey Kennedy

Myron Smith

Richard Belliveau



○ = Corner monument restored.

History of original corner establishment:

1858 - Alfred Millard established this corner at 40.00 chains and set a wood post with two BTs:

12" Tamarack, N25°E, 14 links                      10" Cedar, S41°E, 11 links

1975 - Thomas Arnott, S-887, found a scribed wood post and set a Forest County aluminum monument with three new BTs:

6" Spruce, N41°E, 5.48'                                      8" Cedar, S51°E, 19.84'  
8" Cedar, S14°W, 15.58'

Certificate filed as document #108373, dated 12/15/75.

Description of corner evidence found:

Forest County monument in excellent condition.  
Bearing Trees of Arnott's in good condition.

Description of monument and accessories I established to perpetuate the original location of this corner.

We made one new BT:

6" Red Maple, N59°E, 32.95'

We also placed a nail in side of old BTs and took new bearings and distances:

9" White Spruce, N38°E, 5.58'                                      9" Cedar, S55°E, 19.88'

9" Cedar, S11°W, 15.71'

We Placed a steel sign post northeast, 1.3'

All BTs were painted with a red band, scribed in the stump blaze and BT tags posted to front and back of each tree.

Dated at Rhinelander, Wis., this 8th day of April, 1989

Signature: *Milo E. Stefan* Title Land Surveyor Registration No. 1558  
(County Surveyor, Registered Land Surveyor, or other duly authorized official)

Office of Register of Deeds, County of \_\_\_\_\_, I hereby certify that the within instrument was filed in this office for record on the \_\_\_\_\_ day of \_\_\_\_\_, 19\_\_\_\_ at \_\_\_\_\_ o'clock \_\_\_\_\_ M.

\_\_\_\_\_  
(Register of Deeds)

By \_\_\_\_\_ Deputy

REGISTER'S OFFICE }  
Forest County, Wis. }  
Received for record this 26th day  
of APRIL A.D., 1989, at  
9:10 o'clock A.M. and recorded  
In Vol. CORNER RESTORATIONS  
page 2-7  
*Paul Aschenbrenner*  
Register of Deeds

FORM NO. 985-A  
H.C. Miller Company  
MILWAUKEE, WISCONSIN

Stock No. 26273  
DOCUMENT NUMBER  
137277

43712320020

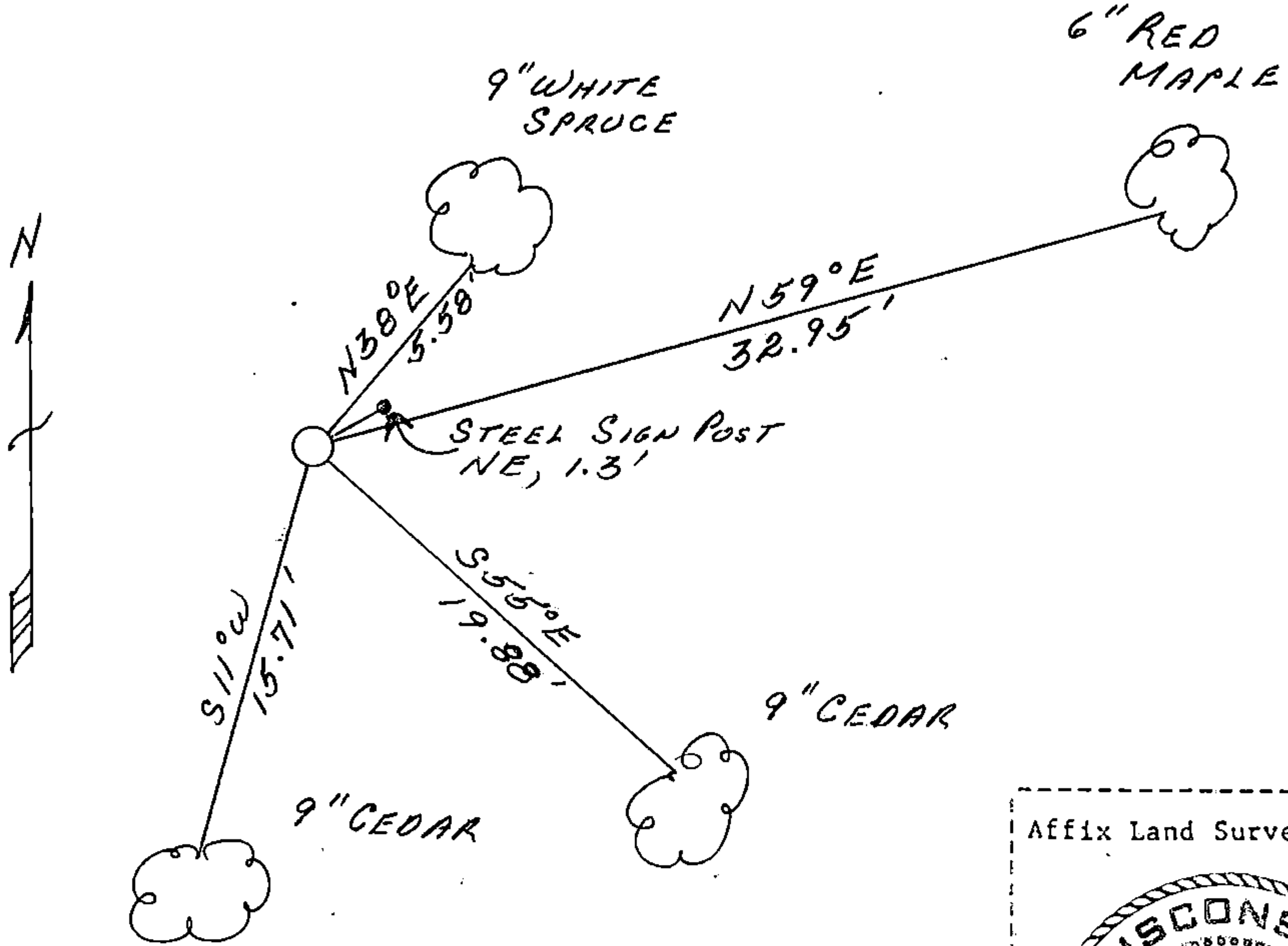
(e) Describe any material discrepancy between the location of the corner as restored or reestablished and the location of that corner as previously restored or reestablished by distance and direction. Show the discrepancy on the plan view drawing under (d), above. Show the distances between the corner as previously restored or reestablished and (1) the corner as restored or reestablished, and (2) to at least 2 of the witness monuments shown on the drawing in (d), above.

N/A

(f) Was the corner restored through acceptance of (1) an obliterated evidence location, or, (2) a found perpetuated location?

(2) a found perpetuated location.

(g&h) Was the corner reestablished through lost corner proportionate methods? If so, show the method, including the directions and distances to other public land survey corners used as evidence or used for proportioning in determining the corner location?



(i) Milo E. Stefan  
 (type or print name) certify that the corner location shown on this record was determined by me or under my direction and control and that this U.S. Public Land Survey Monument Record is correct and complete to the best of my knowledge and belief.

Milo E. Stefan  
 Signature

4/8/89  
 Date

Survey Requested by: Doris Staege  
 District Ranger

4/20/89  
 Date

CERTIFIED LAND CORNER RESTORATION

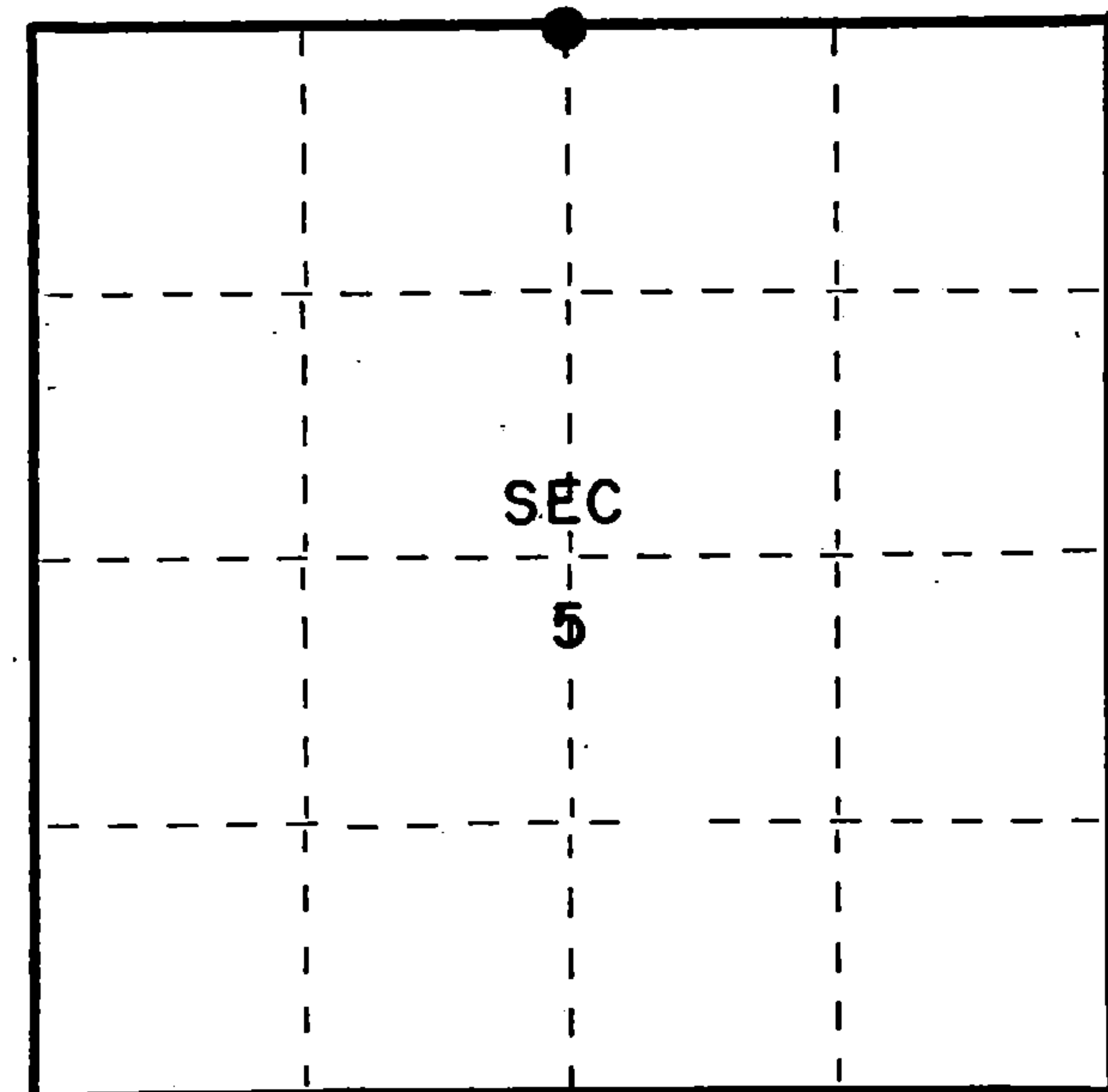
Index No. A-7

State of Wisconsin }  
County of Forest } ss.

I Thomas R. Arnett, do hereby certify that on the 8th day of December, 1975, I found evidence of the 1/4 corner of sections 5 & 32 Township 36 - 37, North, Range 12 E, Fourth Principal Meridian, as described hereon; and that from this evidence I established a new monument and accessories as described hereon to perpetuate the original location of this corner.

Resident witnesses:

.....  
.....  
.....



○ = Corner monument restored.

History of original corner establishment:

Tamarac 12 N25W 14 Lks.  
Cedar 10 S41E 11 Lks.

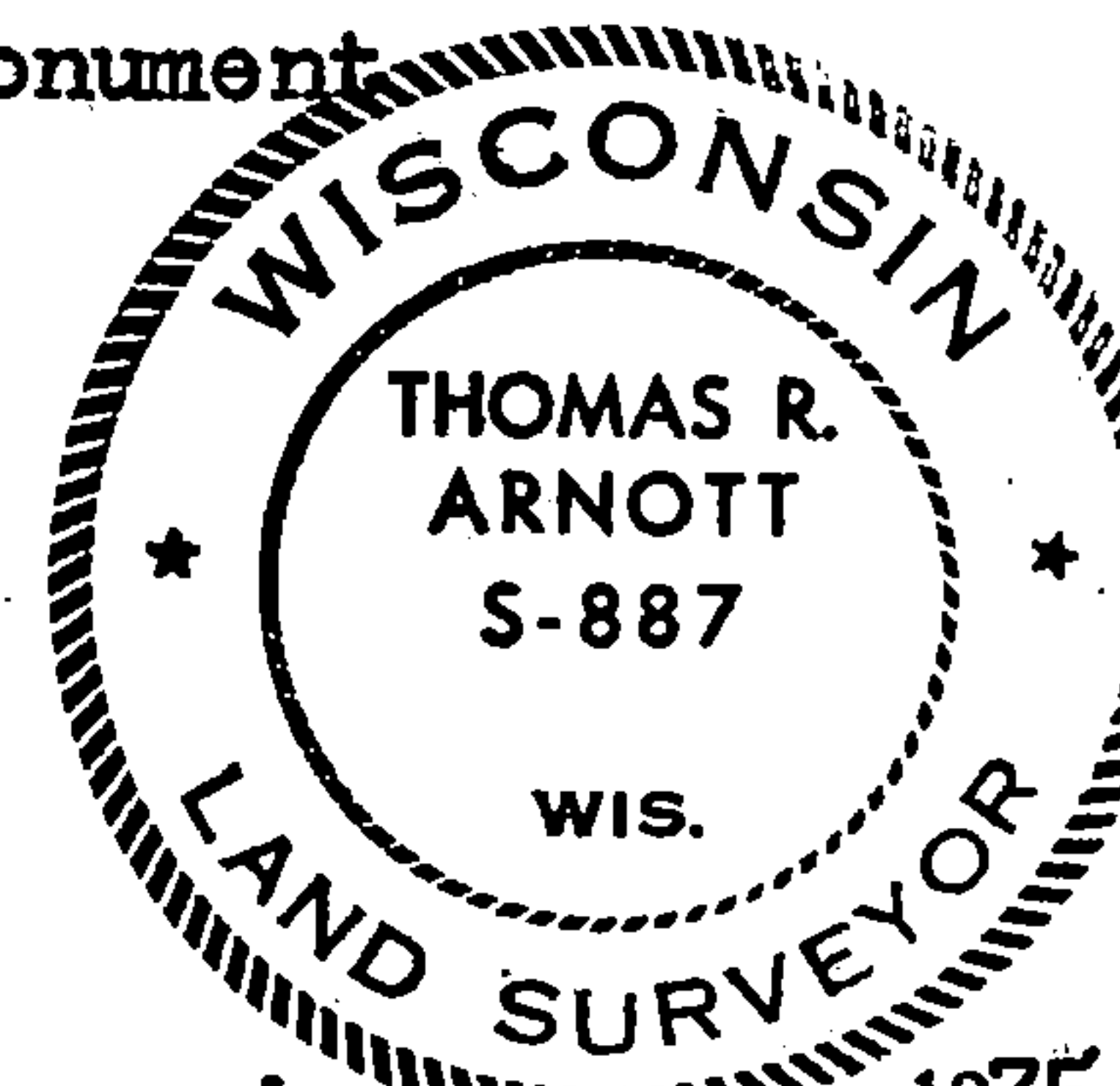
Description of corner evidence found:

Found wood post in 1974 replaced at time with 2" iron pipe

Description of monument and accessories I established to perpetuate the original location of this corner.

Replaced iron pipe with new Forest County aluminum monument

Ties:  
Spruce 6 N41E 5.48 feet  
Cedar 8 S51E 19.84 feet  
Cedar 8 S14W 15.58 feet



Dated at Orandon, Wis., this 15th day of December, 1975

Signature Thomas Arnett Title Land Surveyor Registration No. S-887  
(County Surveyor, Registered Land Surveyor, or other duly authorized official)

Office of Register of Deeds, County of Forest, I hereby certify that the within instrument was filed in this office for record on the 15th day of December, 1975 at 11 o'clock A. M.

Eugene Stutzman Document Number 108073  
(Register of Deeds)

By..... Deputy

FORM 985 R. C. MILLER CO., MILWAUKEE

4371232020

SEE ALSO Z-7 T37 R12