

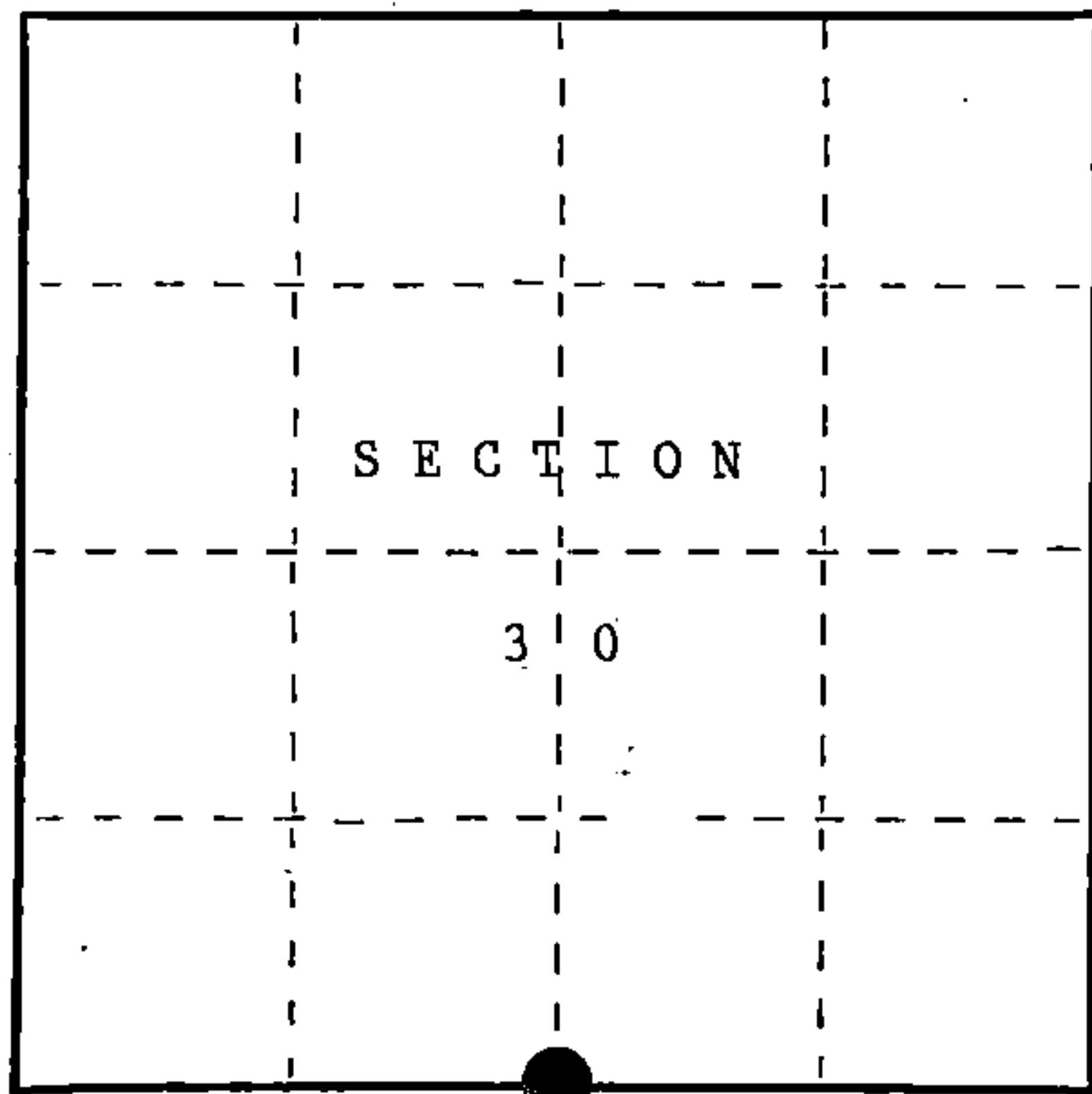
U.S. PUBLIC LAND SURVEY MONUMENT RECORD

Index No. V-3

State of Wisconsin }
County of FOREST } ss.

I, John C. Schulke, do hereby certify that on the 15th day of May, 1987, I found evidence of the South Quarter corner of Section 30 Township thirty-seven, North, Range twelve East, Fourth Principal Meridian, as described hereon; and that from this evidence I established a new monument and accessories as described hereon to perpetuate the original location of this corner.

Resident witnesses:



○ = Corner monument restored.

History of original corner establishment:
Original corner established in 1859 by William Daugherty, U.S. Deputy Surveyor
Set a wooden post with the following bearing trees:
Tamarack 10" S35°E 12 lks.
Tamarack 12" N34°W 16 lks.

Description of corner evidence found:
No evidence found.

Description of monument and accessories I established to perpetuate the original location of this corner.
Set 2 1/2" diameter aluminum pipe monument, 3 feet long, 30 inches in the ground with an aluminum cap stamped; T37N, R12E, 1/4, S30, S31, 1987, S-1665. Set a steel sign post East a distance of 1.0 foot. Established the following bearing trees which are blazed, scribed, painted and tagged.
Red Pine 22" S05°E 38.61 feet
Hemlock 12" S34°W 50.88 feet
Red Maple 4" N87°E 39.00 feet
Cedar 12" N31°E 74.24 feet

Dated at Hiles, Wis., this Ninth day of November, 1987.

Signature John C. Schulke Title Land Surveyor Registration No. S-1665
(County Surveyor, Registered Land Surveyor, or other duly authorized official)

Office of Register of Deeds, County of Forest, I hereby certify that the within instrument was filed in this office for record on the 2nd day of February, 1988 at 9:40 o'clock A.M.

Paul Aschendorfer
(Register of Deeds)

By _____ Deputy

FORM NO. 985-A
H.C. Miller Company

Stock No. 26273

DOCUMENT NUMBER 134578

43712300020

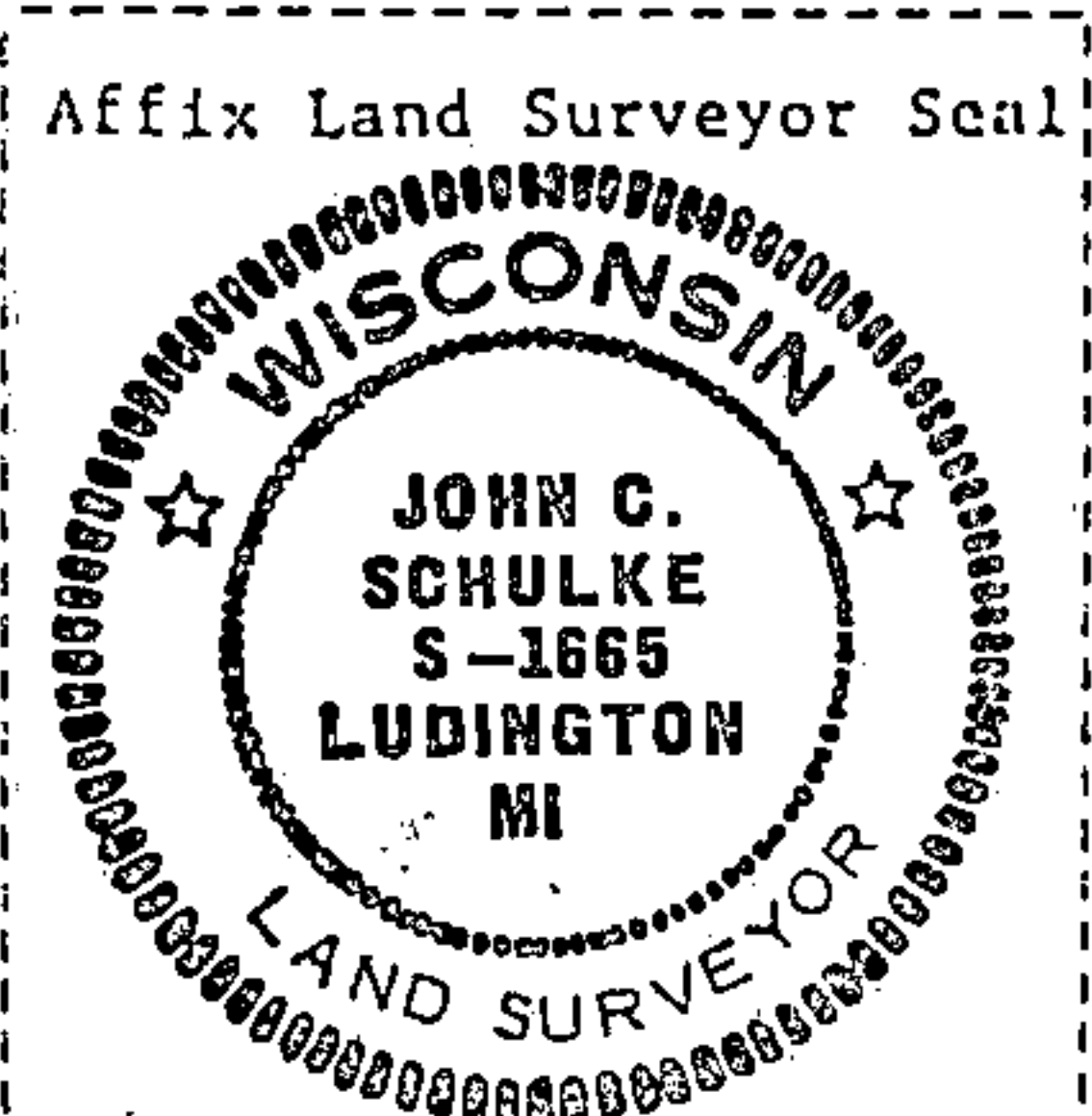
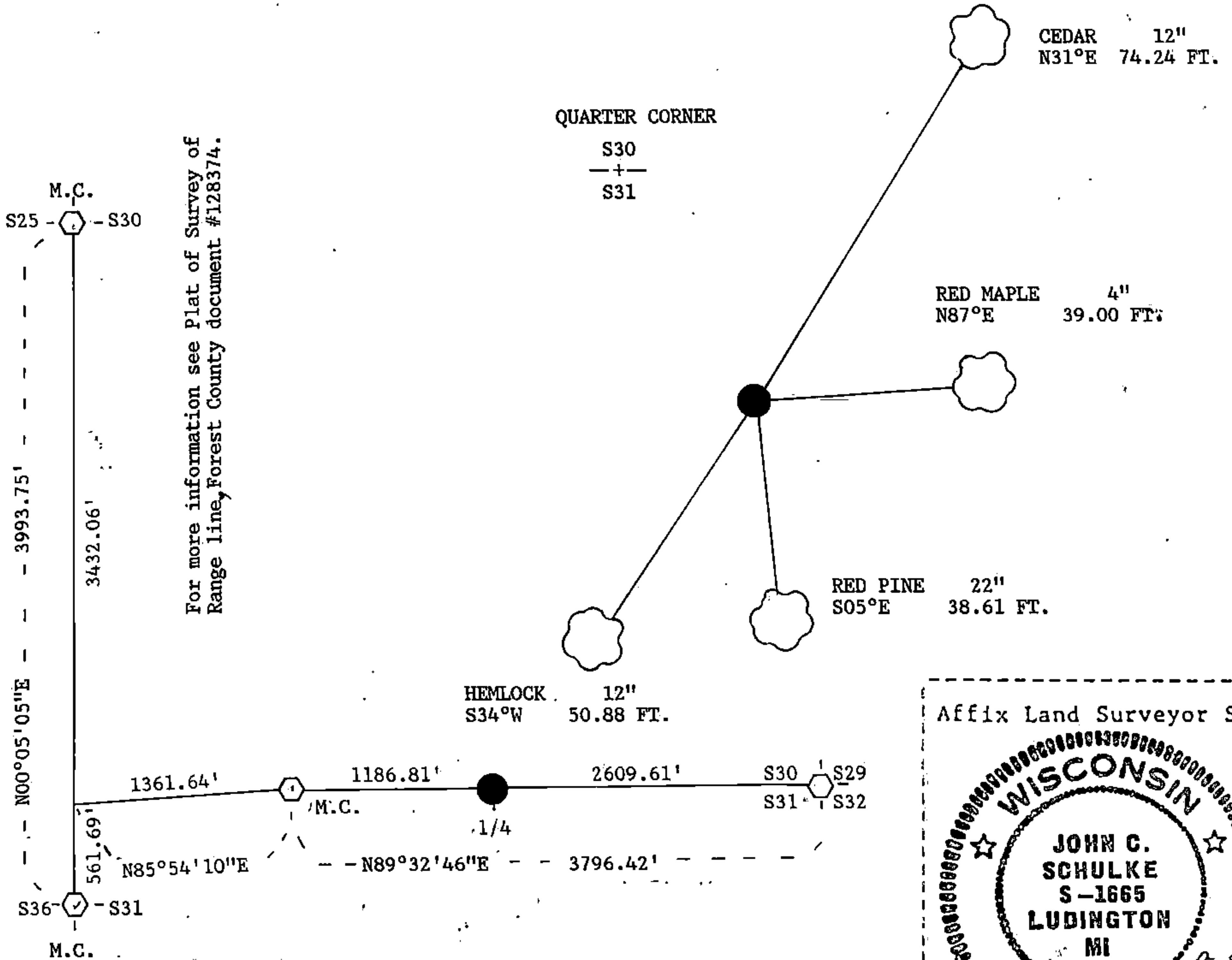
(e) Describe any material discrepancy between the location of the corner as restored or reestablished and the location of that corner as previously restored or reestablished by distance and direction. Show the discrepancy on the plan view drawing under (d), above. Show the distances between the corner as previously restored or reestablished and (1) the corner as restored or reestablished, and (2) to at least 2 of the witness monuments shown on the drawing in (d), above.

No discrepancy, first corner restoration.

(f) Was the corner restored through acceptance of (1) an obliterated evidence location, or, (2) a found perpetuated location?

see g & h.

(g&h) Was the corner reestablished through lost corner proportionate methods? If so, show the method, including the directions and distances to other public land survey corners used as evidence or used for proportioning in determining the corner location?



(i) I, John C. Schulke
(type or print name) certify that the corner location shown on this record was determined by me or under my direction and control and that this U.S. Public Land Survey Monument Record is correct and complete to the best of my knowledge and belief.

John C. Schulke Signature 11-9-87 Date

Survey requested by: Dale S. Stage District Ranger 2/1/88 Date