

U.S. PUBLIC LAND SURVEY MONUMENT RECORD

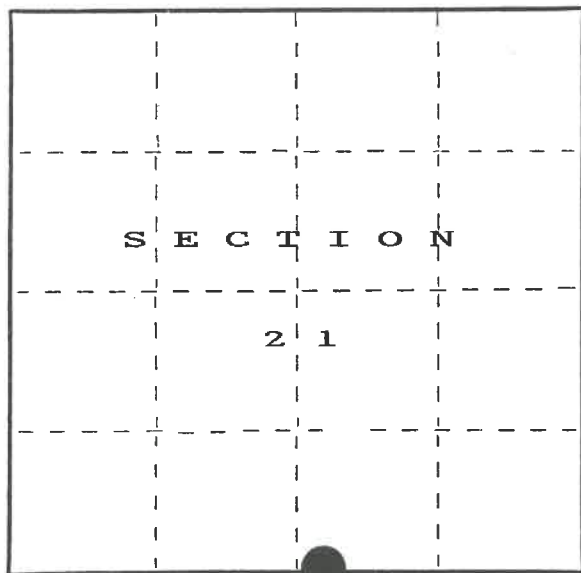
Index No. R-11 & 12

State of Wisconsin }
 County of FOREST } ss.

I, John C. Schulke, do hereby certify that on the 3rd day of October, 1986, I found evidence of the Meander corner of Sections 21 and 28, Township 37, North, Range 12 East, Fourth Principal Meridian, as described hereon; and that from this evidence I established a new monument and accessories as described hereon to perpetuate the original location of this corner.

Resident witnesses:

.....



○ = Corner monument restored.

History of original corner establishment:

Original Government Survey in 1859 by William Daugherty.

Birch	10"	N39°W	19 links
Birch	10"	S52°W	16 links

Description of corner evidence found:

Found 6" X 6" scribed and squared wood post rotted off at ground level. Beside post leaning 1" iron pipe. Waters edge East 3.1 feet. Accepted these as the best evidence for the corner location.

Description of monument and accessories I established to perpetuate the original location of this corner.

Set a 1 inch diameter aluminum pipe monument, 5 feet long, 4 feet in the ground, with an aluminum cap stamped: MEANDER CORNER, T37N, R12E, S21, S28, 1986, S-1665. Established the following new bearing trees which are blazed, scribed, painted and tagged.

Hemlock	8"	S07°E	41.16 feet
Hemlock	8"	S40°W	8.1 feet
Hemlock	9"	S86°W	9.87 feet
Sugar Maple	20"	S69°W	33.74 feet
Steel sign post		Southwest	2.1 feet
Water edge		East	3.1 feet
SE Corner of garage		N45°W	15.46 feet

Dated at Ludington, Michigan, Wis., this fifth day of January, 1987.

Signature John C. Schulke Title Land Surveyor Registration No. S-1665
 (County Surveyor, Registered Land Surveyor, or other duly authorized official)

Office of Register of Deeds, County of Forest, I hereby certify that the within instrument was filed in this office for record on the 24th day of February, 1987 at 2:00 o'clock P. M.

Paul Aschenbrenner
 (Register of Deeds)

By.....Deputy

REGISTER'S OFFICE
 Forest County, Wis.
 Received for record this 24th day of February, A.D., 1987 at 2:00 o'clock P. M. and recorded in Vol. CARNER RESTORATIONS page 8-11 & 14
Paul Aschenbrenner
 Register of Deeds

FORM NO. 985-A
 H.C. Miller Company
 MILWAUKEE, WISCONSIN

Stock No. 26273

DOCUMENT NUMBER
 132188

43712210019

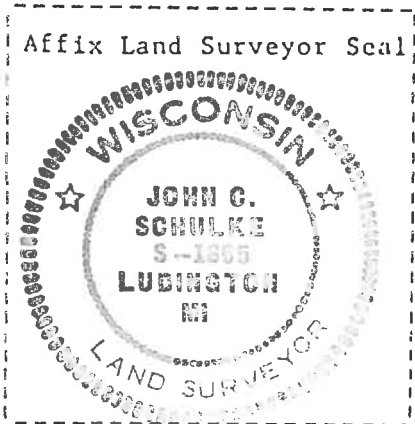
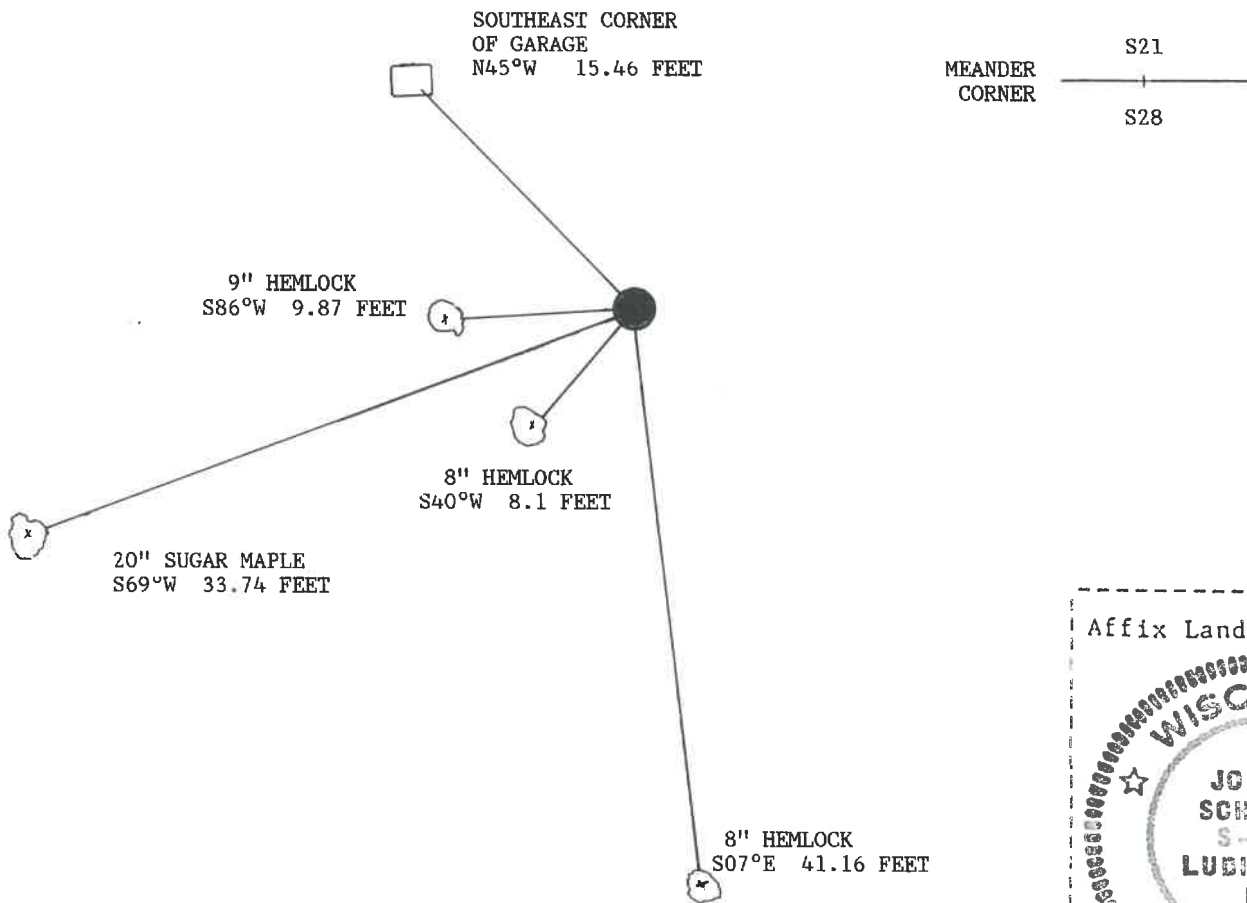
(e) Describe any material discrepancy between the location of the corner as restored or reestablished and the location of that corner as previously restored or reestablished by distance and direction. Show the discrepancy on the plan view drawing under (d), above. Show the distances between the corner as previously restored or reestablished and (1) the corner as restored or reestablished, and (2) to at least 2 of the witness monuments shown on the drawing in (d), above.

No discrepancy, accepted existing corner evidence.

(f) Was the corner restored through acceptance of (1) an obliterated evidence location, or, (2) a found perpetuated location?

The corner was through acceptance what is a found perpetuated corner location.

(g&h) Was the corner reestablished through lost corner proportionate methods? If so, show the method, including the directions and distances to other public land survey corners used as evidence or used for proportioning in determining the corner location?



(i) I, John C. Schulke
 (type or print name) certify that the corner location shown on this record was determined by me or under my direction and control and that this U.S. Public Land Survey Monument Record is correct and complete to the best of my knowledge and belief.

John C. Schulke January 5th, 1987
 Signature Date

Certificate Ready for Filing: Dale S. Staeger 2/24/87
 District Ranger Date