

U.S. PUBLIC LAND SURVEY MONUMENT RECORD

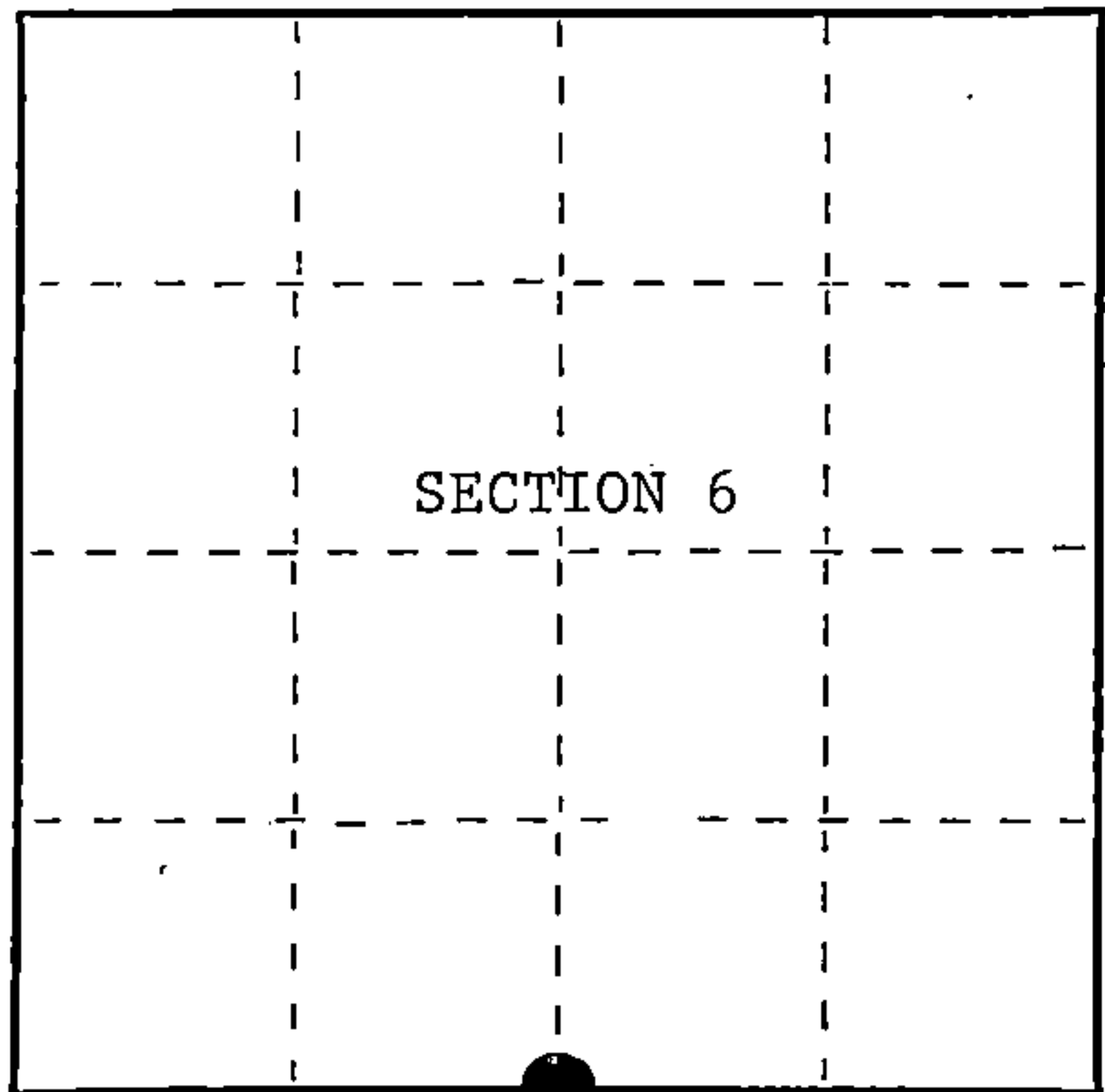
Index No. E-3

State of Wisconsin }
County of Forest } ss.

I, William B. Cochrane, do hereby certify that on the 11th day of July, 1988, I found evidence of the South Quarter corner of Section 6 Township 37 North, Range 12 East, Fourth Principal Meridian, as described hereon; and that from this evidence I established a new monument and accessories as described hereon to perpetuate the original location of this corner.

Resident witnesses:

.....
.....
.....



○ = Corner monument restored.

History of original corner establishment:

Original Government Survey in 1859 by William E. Daugherty. East corrected between Sections 6 and 7, at 37.90 chains, set Quarter Section Post to Sections 6 and 7. From which the following bear;

Birch	18"	N44°E	14 lks.
Sugar	16"	S69°W	18 lks.

Description of corner evidence found:

Found 3"x3" squared wood post with a metal tag attached and marked 1/4, from which a blazed sugar stump bears S75°E, 6.95 feet.

I accept the wood post and local bearing tree evidence as the best available evidence for restoring the corner position.

Description of monument and accessories I established to perpetuate the original location of this corner.

In place of wood post, set a 2½ inch diameter aluminum pipe monument, 3 feet long, 2½ feet in the ground, with an aluminum cap stamped; T37N, R12E, 1/4, S6, S7, 1988, S-1107. From which the following new blazed and scribed bearing trees bear;

Maple	19"	N70°E	21.65 feet
Maple	9"	S26°E	31.30 feet
Steel Sign Post		SE	1.00 feet

Dated at Hiles, Wis., this 15th day of February, 1989

Signature *William B. Cochrane* Title Land Surveyor Registration No. S-1107
(County Surveyor, Registered Land Surveyor, or other duly authorized official)

Office of Register of Deeds, County of Forest, I hereby certify that the within instrument was filed in this office for record on the 7th day of March, 1989 at 9:55 o'clock A.M.

Paul Aschenbrenner
(Register of Deeds)

By *Sandra L. Pedda* Deputy

FORM NO. 985-A

H.C. Miller Company

Stock No. 26273

DOCUMENT NUMBER

137003

43712060620

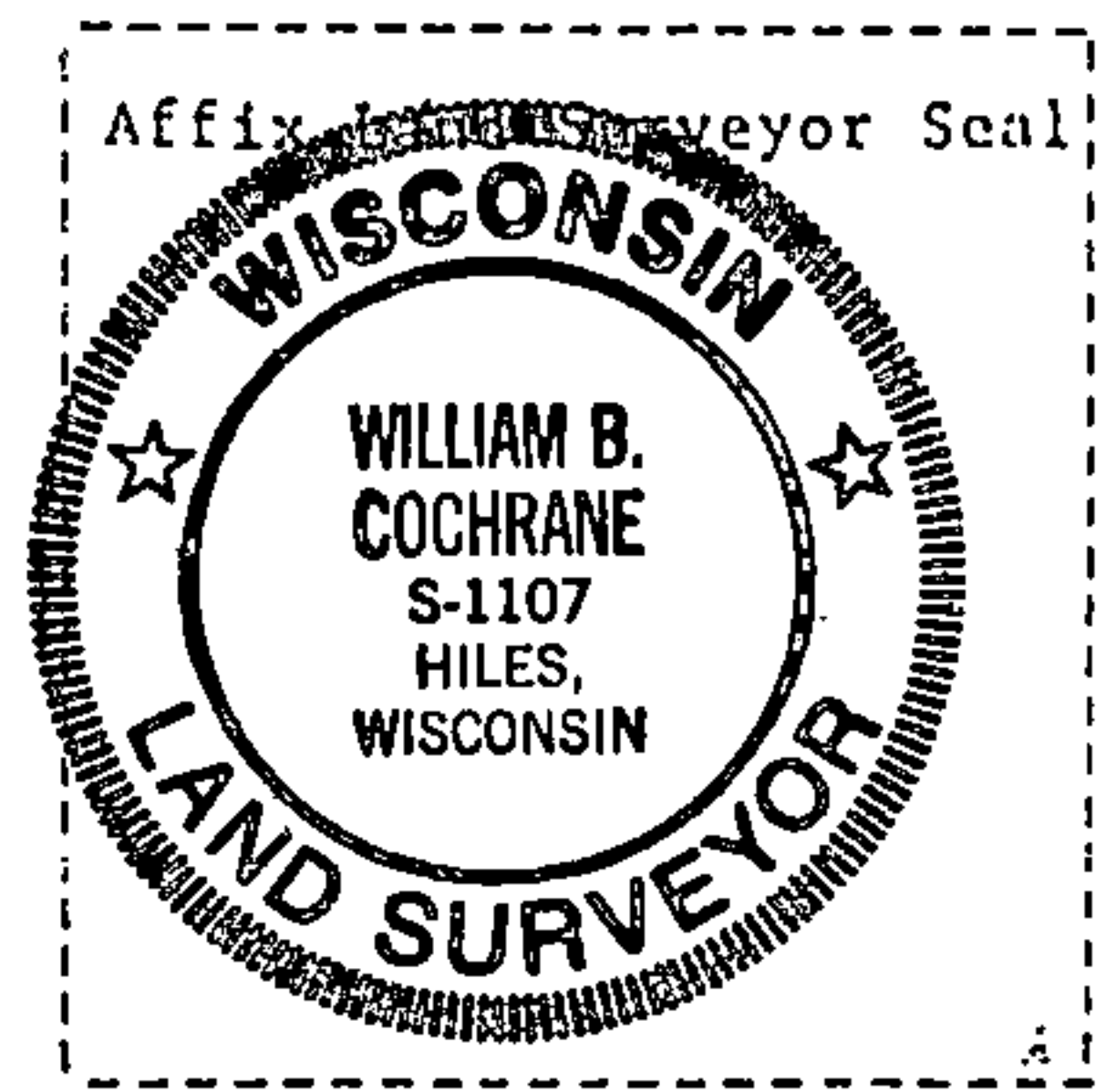
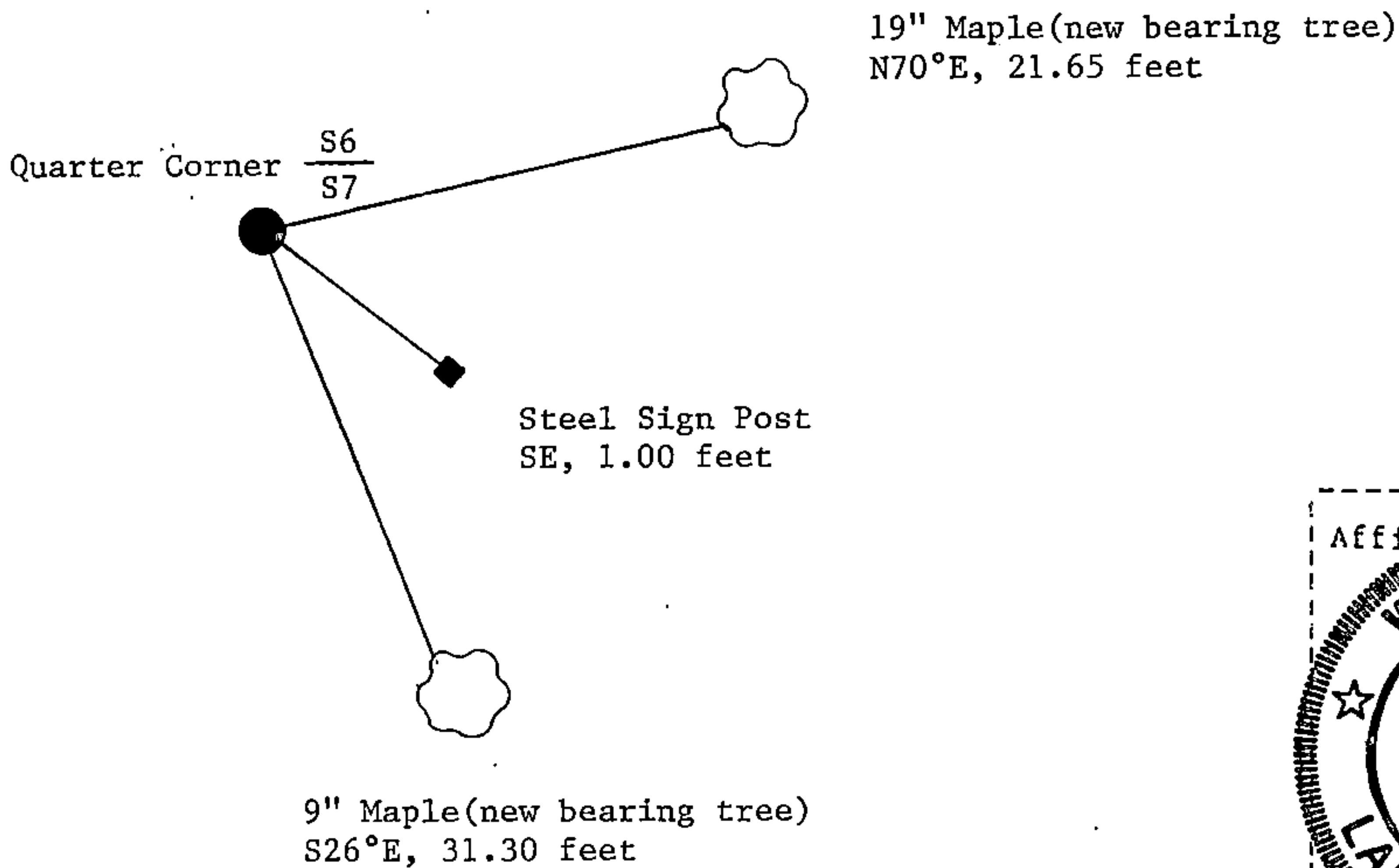
(e) Describe any material discrepancy between the location of the corner as restored or reestablished and the location of that corner as previously restored or reestablished by distance and direction. Show the discrepancy on the plan view drawing under (d), above. Show the distances between the corner as previously restored or reestablished and (1) the corner as restored or reestablished, and (2) to at least 2 of the witness monuments shown on the drawing in (d), above.

See drawing below.

(f) Was the corner restored through acceptance of (1) an obliterated evidence location, or, (2) a found perpetuated location?

Restored from accepted evidence.

(g&h) Was the corner reestablished through lost corner proportionate methods? If so, show the method, including the directions and distances to other public land survey corners used as evidence or used for proportioning in determining the corner location?



(i) I, William B. Cochrane
 (type or print name) certify that the corner location shown on this record was determined by me or under my direction and control and that this U.S. Public Land Survey Monument Record is correct and complete to the best of my knowledge and belief.

William B. Cochrane February 15, 1989
 Signature Date

Survey requested by; Amela York 2/27/89

Date of Survey: 1988