

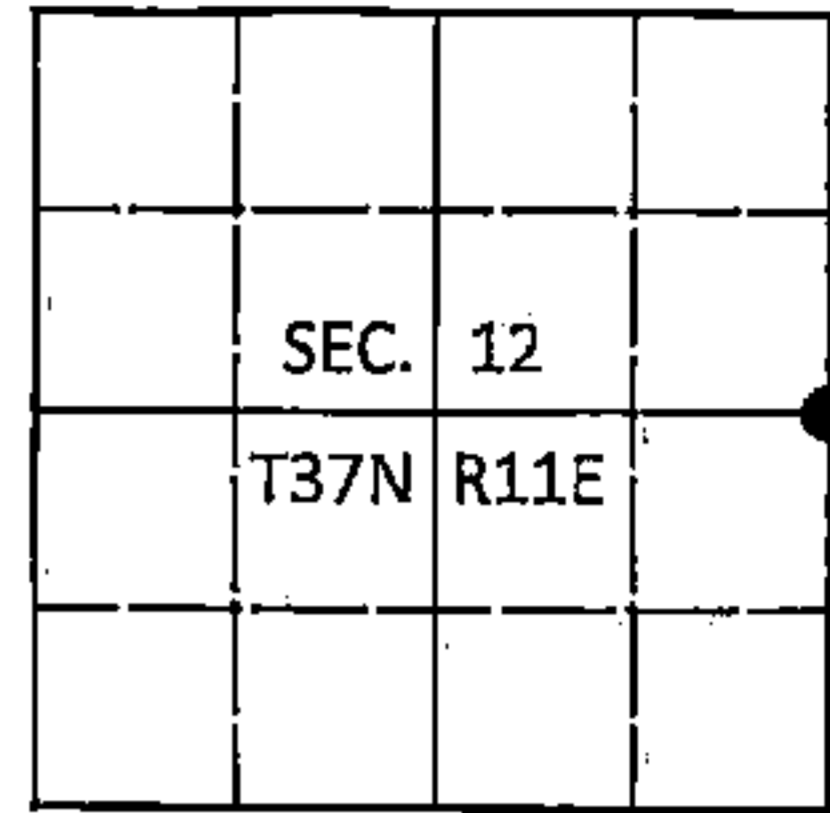
225393

U.S. PUBLIC LAND SURVEY MONUMENT RECORD

Note: This form is intended and designed to fulfill all requirements of Wisconsin Administrative Code, Chapter A-E 7.08 U.S. Public Land Survey Monument Record (3)(a-1).

(a) CORNER LOCATION
1/4 Cor. of Secs. 7 & 12
Township 37 North
Range 11 & 12 East of the 4th P.M.
Town of Piehl
County of Oneida

WISCORS - Oneida County
N: 188,660.72 USft
E: 357,125.80 USft
Datum: NAD 83(2011)
GNSS Method: RTN Direct
GNSS Control: WISCORS VRS



(b) HISTORY OF ORIGINAL CORNER ESTABLISHMENT

Original Surveyor: Alfred Millard. Original Accessories:

Date of Survey Commenced: May, 1858 tamarack 8" N21°E, 9 lks.
Completed: June, 1858 spruce 7" S87°W, 31 lks.

(b)(f)(g)(h) Description of monument found at this corner and if it was accepted, state all evidence (material, testimonial, occupational, plats, records, other monuments) used as a basis for accepting. If not accepted or if nothing was found, state evidence used as basis for establishing location. If re-established through lost corner proportionate methods, indicate all monuments, distances and directions used to establish. Indicate type of monument and sign post found or set.

April 29, 1937: Notes by V.M. Maine in book 1 on page 197. Maine found stump of NE tamarack and point of original post. New bearing trees: spruce 4" N55°E, 13.5 lks.; spruce 4" N47°W, 16 lks.; spruce 5" S38°W, 29 lks.

September 11, 2016: I found and accepted a 2-1/2" diam. iron pipe with a 2-1/2" diam. brass cap projecting 24" above the ground surface. I was unable to recover Maine's bearing trees, but this type of monument is that typically set by V.M. Maine. I found or established accessories as shown below and found a USFS steel sign post bearing Northeast, 1 ft. dist.

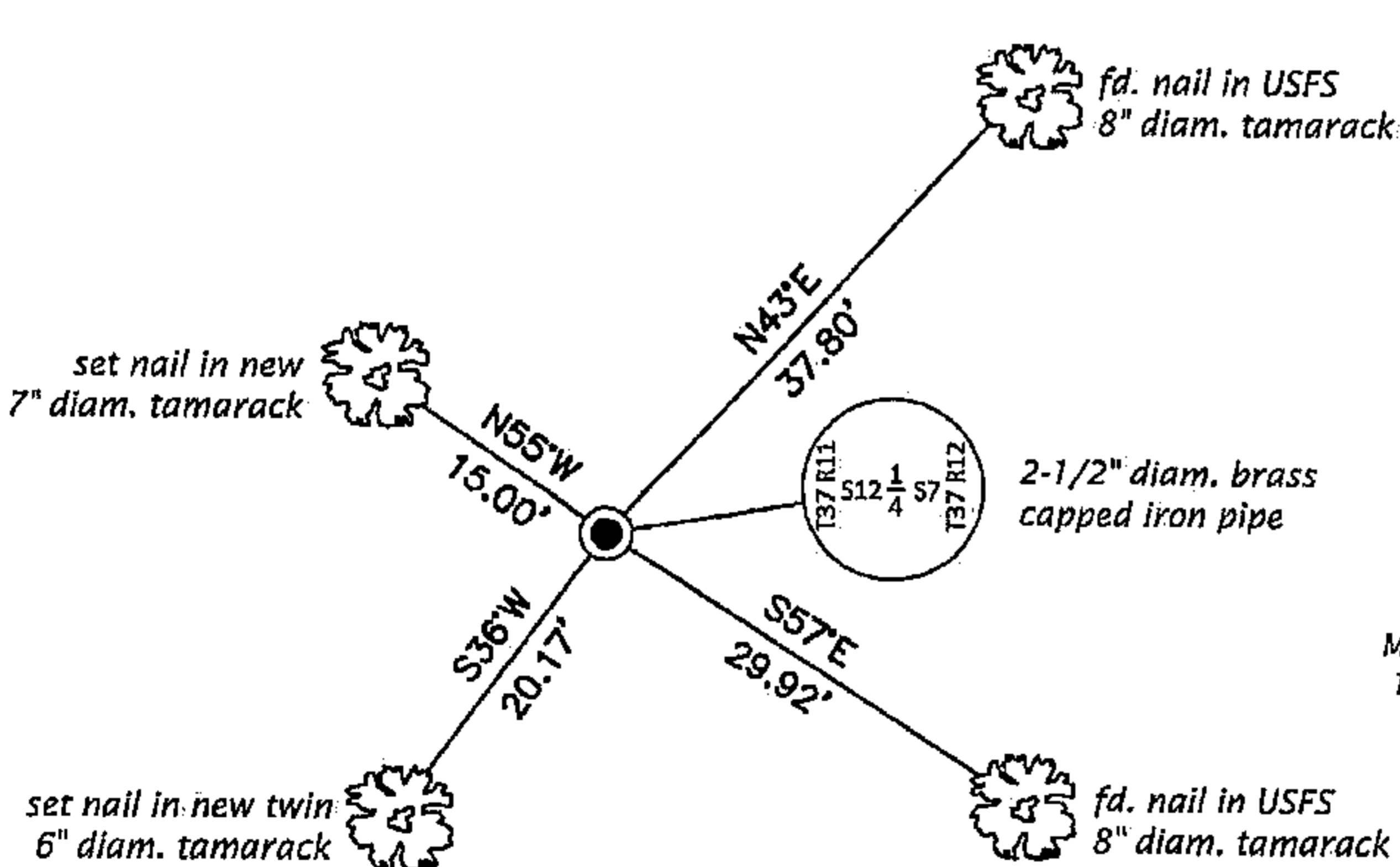
The coordinate value shown has been verified by at least one of the following methods: 1) comparison to a previously GPS determined published value; 2) the value is the average of two or more GPS observations at a markedly different time; 3) one or more distances were measured back to the GPS observed corner from temporary GPS observed offset locations.

FOREST COUNTY, WI
CORTNEY BRITTEN CLEEREMAN
REGISTER OF DEEDS
RECEIVED FOR RECORD

MAY 31 2018

Time: 10:00 A.M.
Vol.: Corner Restoration
Page Number: 6-1

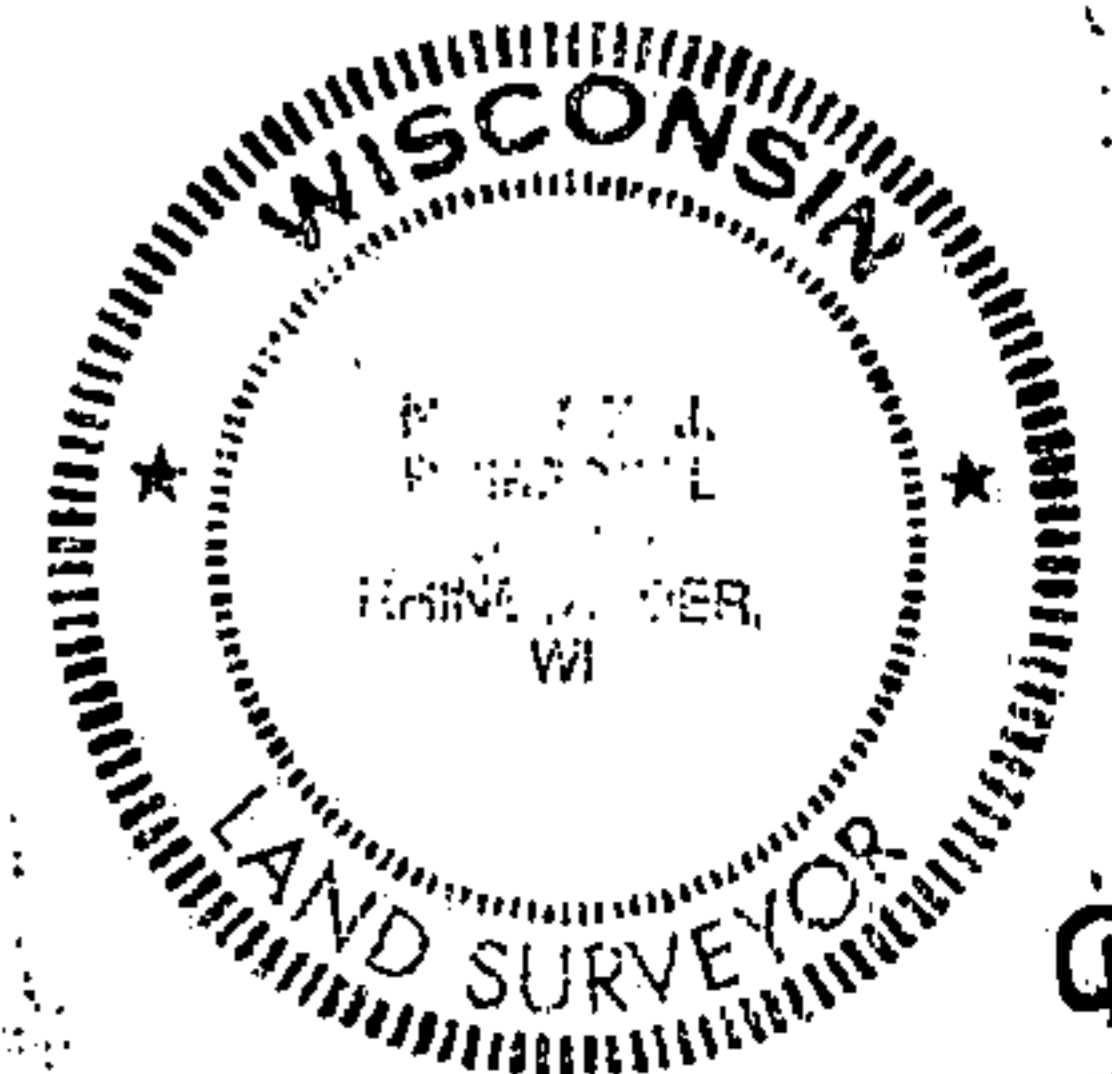
(c)(d)(e) Plan view of corner with ties to at least 4 witness monuments. If in disagreement with previously established corner, show the distances between the two corners and also indicate the ties to the disputed.



REGISTER OF DEEDS OFFICE
ONEIDA COUNTY
FILED

DEC 28 2016

AT O'CLOCK M
KYLE J. FRANSON
REGISTER OF DEEDS



(i) I, Michael J. Romportl, Professional Land Surveyor No. S-1624, hereby certify that the corner location on this record was determined by me or under my direction and control and that this U.S. Public Land Survey Monument Record is correct and complete to the best of my knowledge and belief.

Michael J. Romportl 12/23/2016
Signature Date

3711122000 (INDEX NO. G-25)

43711122000

6-1