

Document Number  
177222

REGISTER'S OFFICE }  
Forest County, Wis. }  
Received for record this 5<sup>th</sup> day  
of November A.D., 2002 at  
1:35 o'clock P.M. and recorded  
in Vol. CORNER RESTORATION  
page S-24  
*Kay Swanson, Deputy*  
Register of Deeds

### U.S. PUBLIC LAND SURVEY MONUMENT RECORD

(As Required by WI Adm. Code)

History of original corner establishment and subsequent restorations and descriptions of any record, monument, occupational, testimonial or other evidence considered:

Corner not set in original Government Survey.

2002 - Established the NE 1/16th corner at the intersection point of the N-S 1/16th line and the E-W 1/16th line of the Northeast quarter of Sec. 25. Set a 1" x 36" Forest County Aluminum Monument stamped for the 1/16th corner.

Corner was: (Check All That Apply)

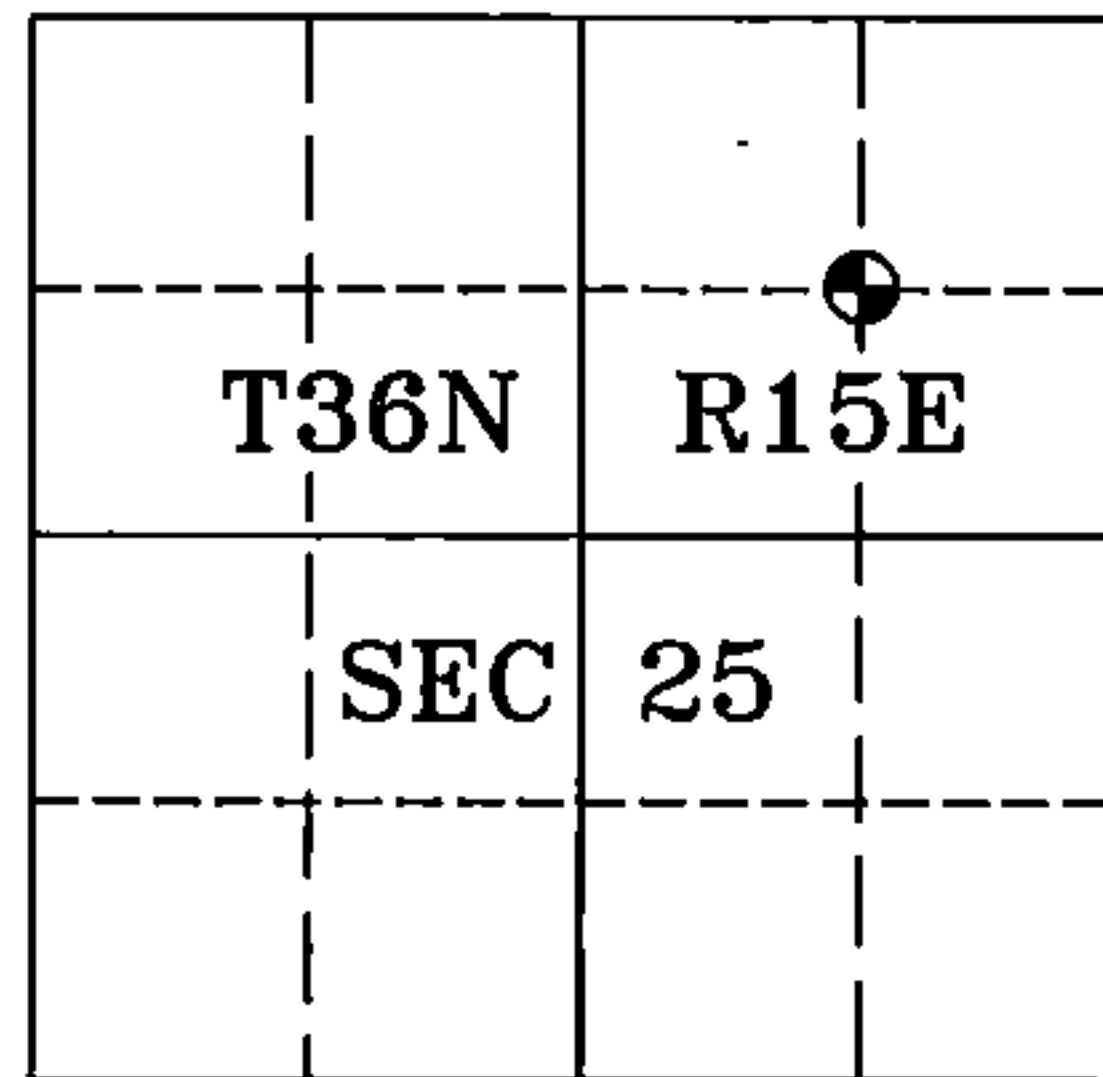
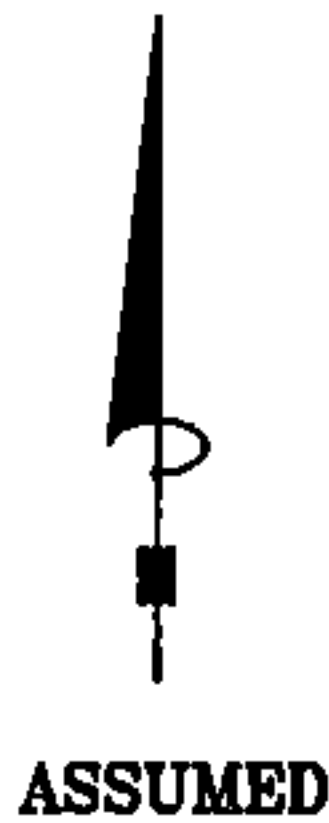
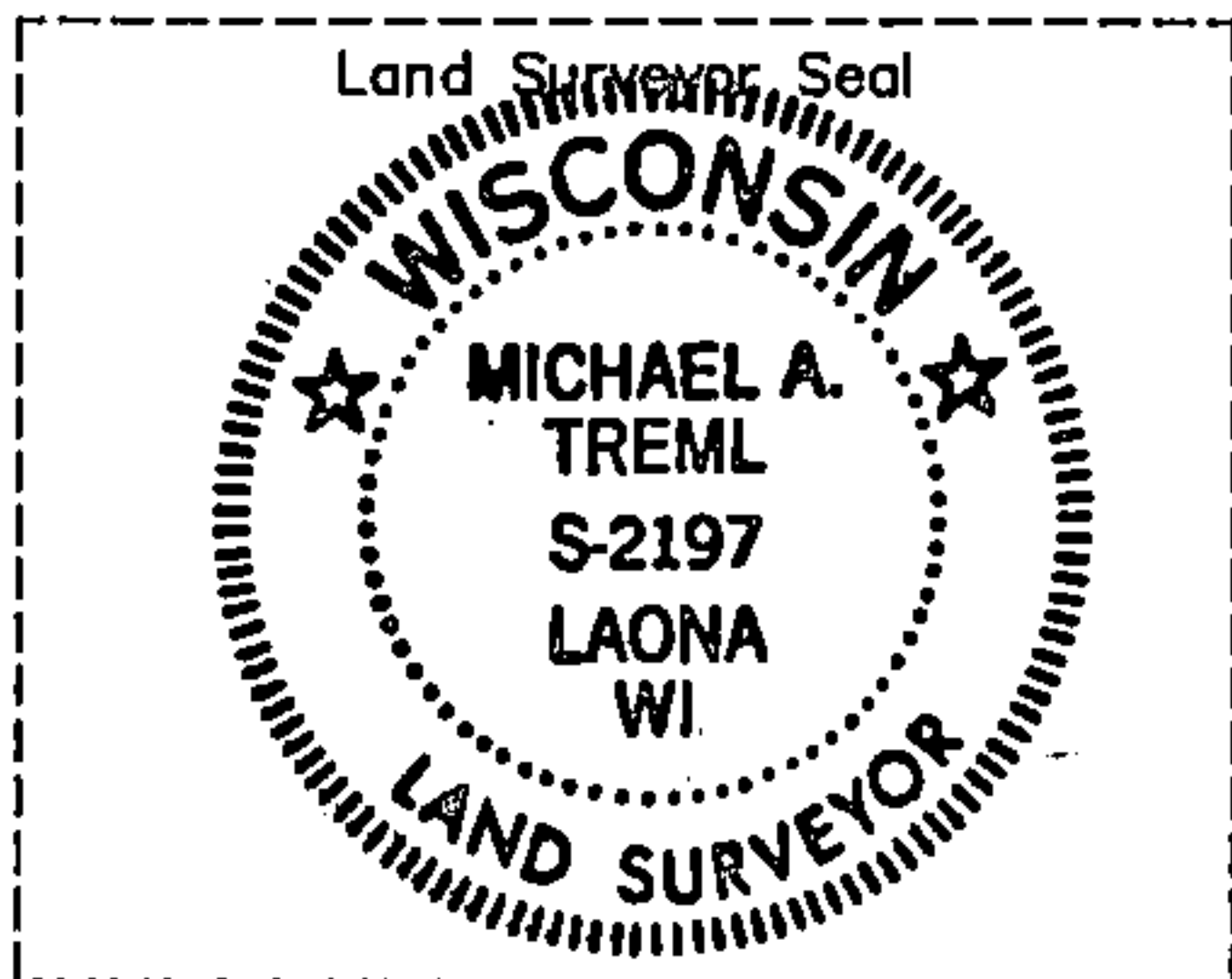
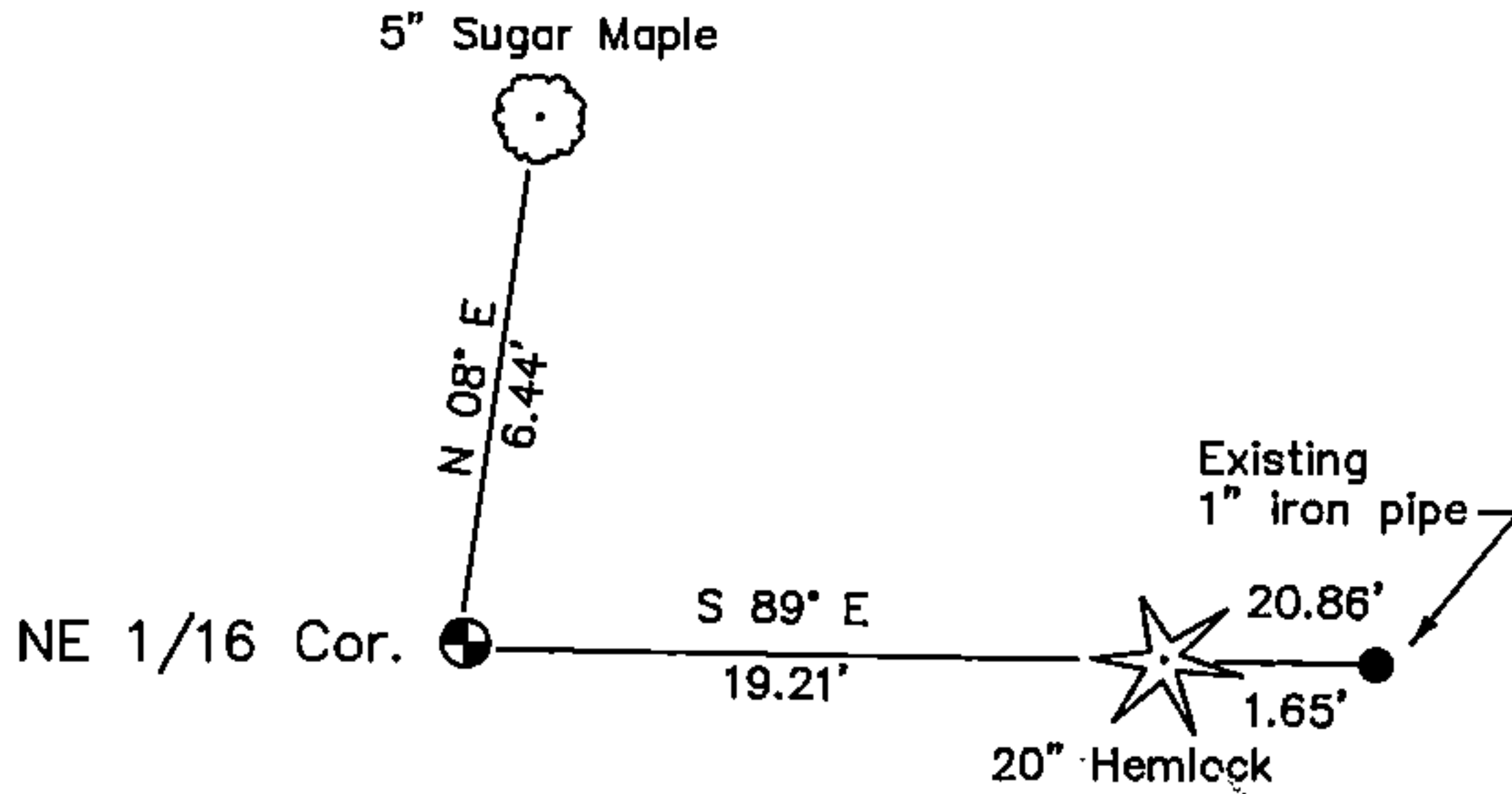
- Restored through acceptance of an obliterated evidence location.
- Restored through acceptance of a found perpetuated location.
- Considered a lost corner and reestablished through lost corner proportionate methods (include a plan view drawing showing distances and directions to other Public Land Survey Corners used for proportioning and determining the corner location).
- Restored or reestablished in a location that differs from a previous restoration or reestablishment (include a plan view drawing and indicate what was set and/or found).

Describe the monument and accessories used to perpetuate the location of this corner (include a plan view drawing and indicate what was set and/or found).

LEGEND:

● Forest County Aluminum Monument

Note: All distances are taken to nail in side of tree.



I, Michael A. Tremel, RLS  
(type or print name) certify that the corner location shown on this record was determined by me or under my direction and control and that this U.S. Public Land Survey Monument Record is correct and complete to the best of my knowledge and belief.

*Michael A. Tremel* 10/10/02  
Signature Date

The Northeast Sixteenth corner of Section 25 T. 36 N., R. 15 E. Forest County, WI

Index No. S-24

43615253010