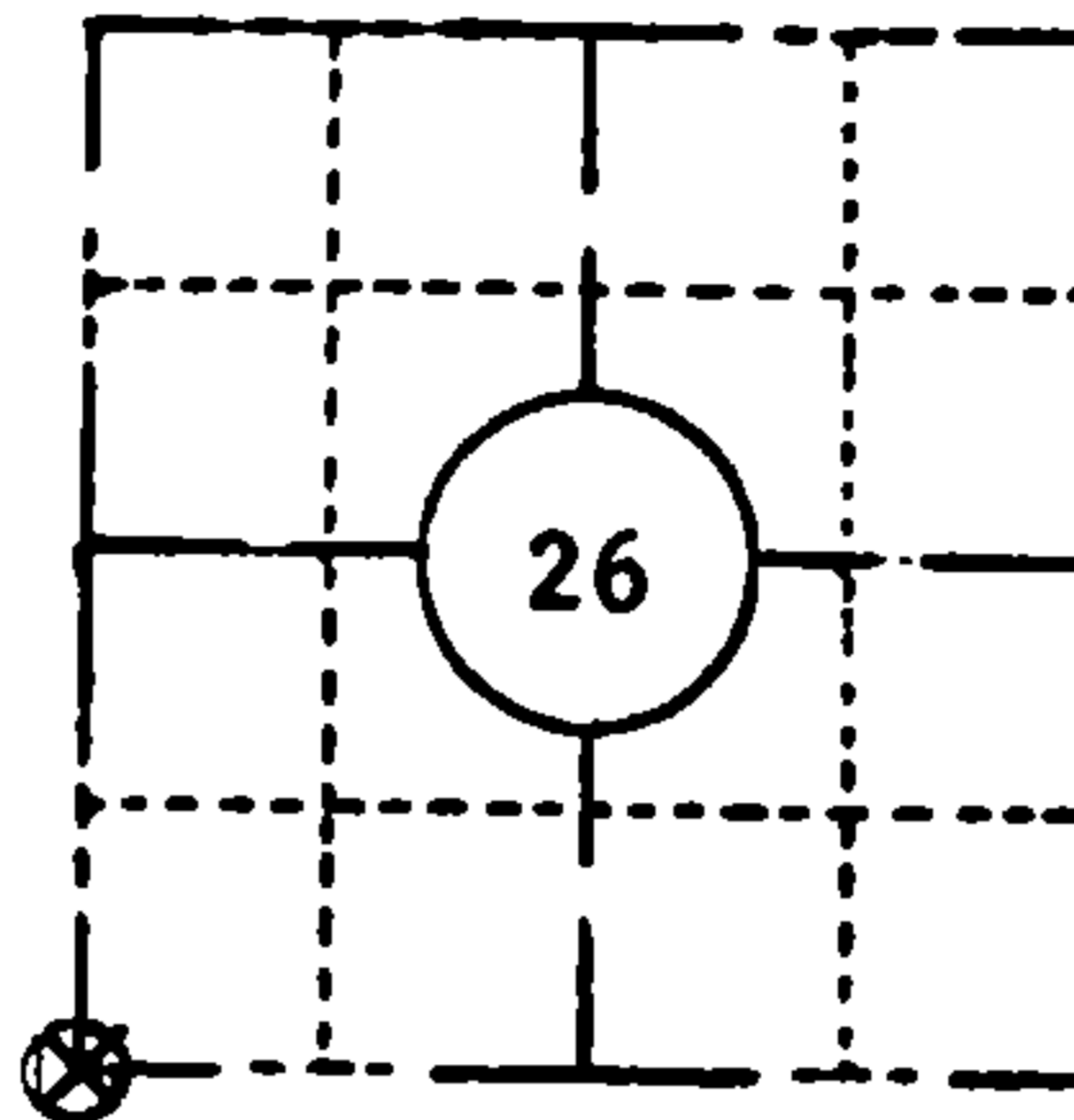


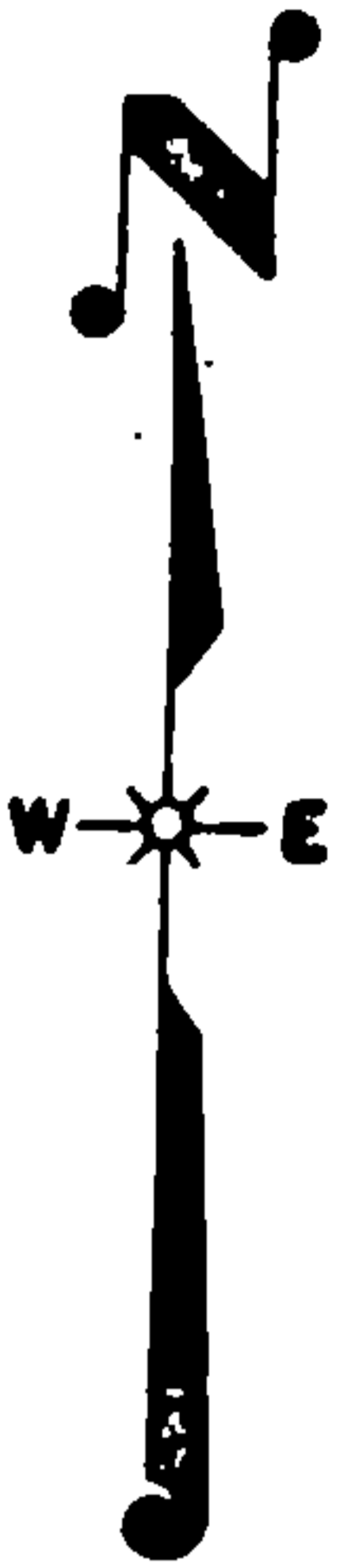
FIELD SURVEY NOTES
PRESERVATION OF LANDMARKS
(Pursuant to Section 59.635(7) Wisconsin Statutes)

State Highway Commission of Wisconsin
Form E-D-707-66

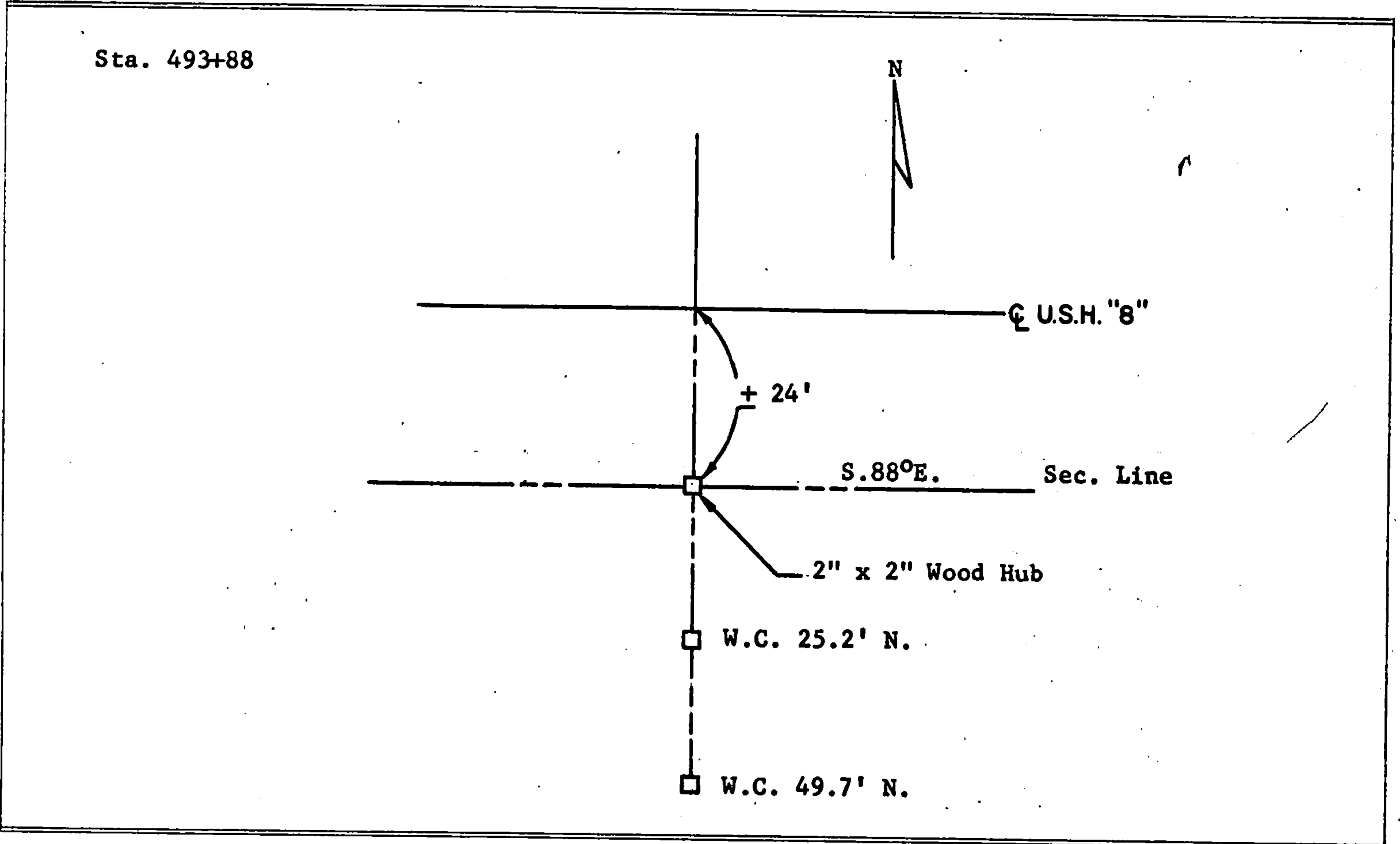
COUNTY Forest		
TOWN Laona		
HIGHWAY U.S.H. 8		
SECTION 26-27-34-35	TOWNSHIP 36 N.	RANGE 14 E.
TYPE OF LANDMARK Sec. Corner		



LOCATION SKETCH
(Location of landmark indicated by "x")



This space for copy of field notes or ties to the above described landmarks



FILED UNDER PROJECT NUMBER F 021-3(14)		
SHC DISTRICT OFFICE NUMBE 7	CITY Rhineland	COUNTY Oneida
LOCATED OR ESTABLISHED BY NAME T. W. S. TITLE Party Chief DATE 9/15/65		

90692

COUNTY CLERK'S OFFICE COUNTY REGISTER'S OFFICE DATE RECEIVED FOR RECORD DATE COPY SENT TO COUNTY SURVEYOR	WISCONSIN } SS
SIGNATURE OF COUNTY CLERK <i>Karl D. Meyer</i>	

PRESERVATION OF LANDMARKS

PAGE _____

4361427 0000

417