

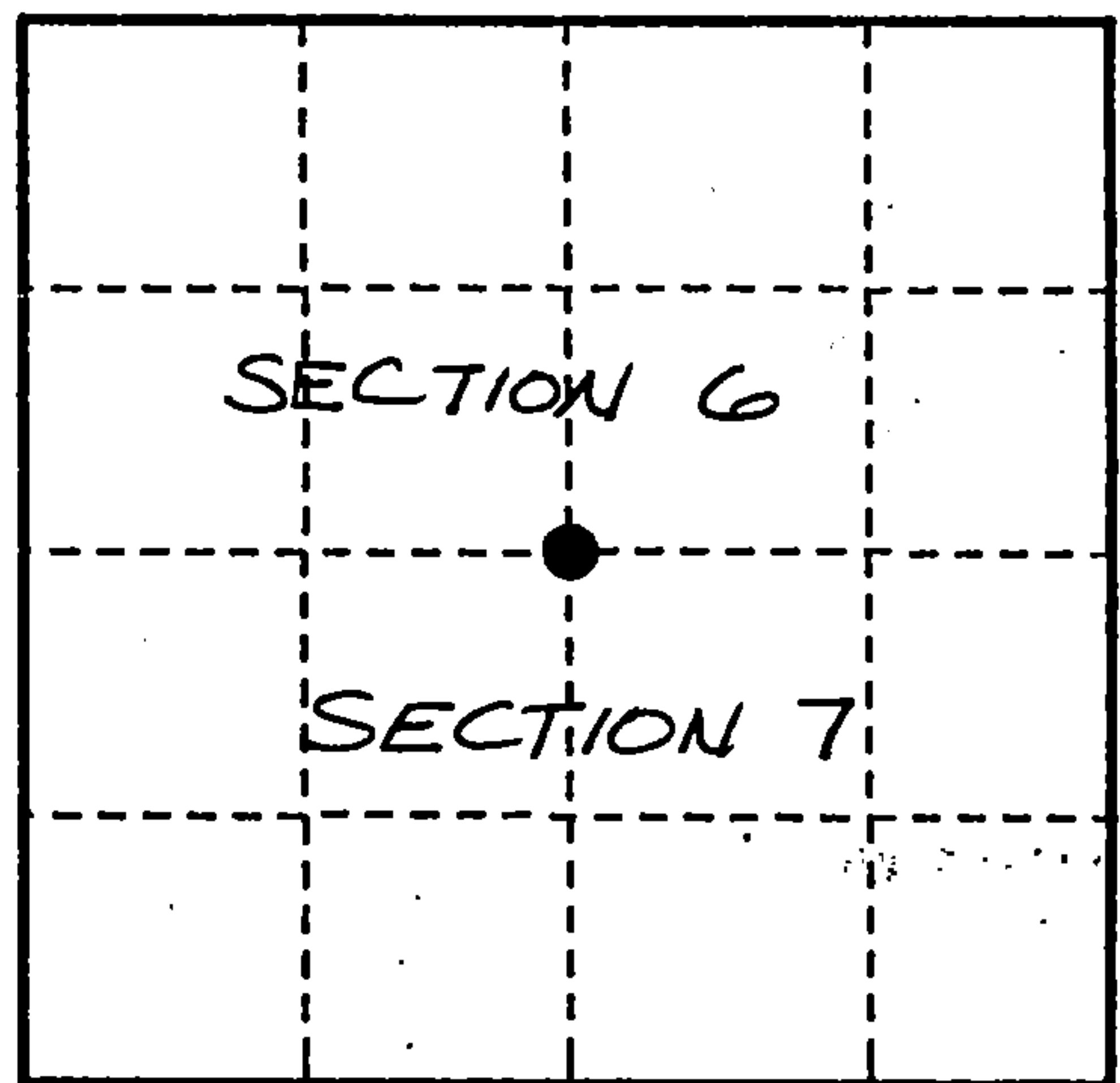
U. S. PUBLIC LAND SURVEY MONUMENT RECORD

INSTRUCTIONS:

This record shall show the location of the corner and shall include all of the following nine elements (a through i).

- (a) Identify the corner by reference to the U.S. public land survey system.
 ○ = Corner monument restored.

Quarter corner to Sections 6 & 7,
 T36N, R14E



- (b) Describe any record evidence, monument evidence, occupational evidence, testimonial evidence or any other material evidence you considered, and whether the monument was found or placed.

Original corner set by James McBride in July 1859.

Original Bearing Trees:

- Cedar - 8" - N36°W - 42 links
- Spruce - 10" - S15°E - 30 links

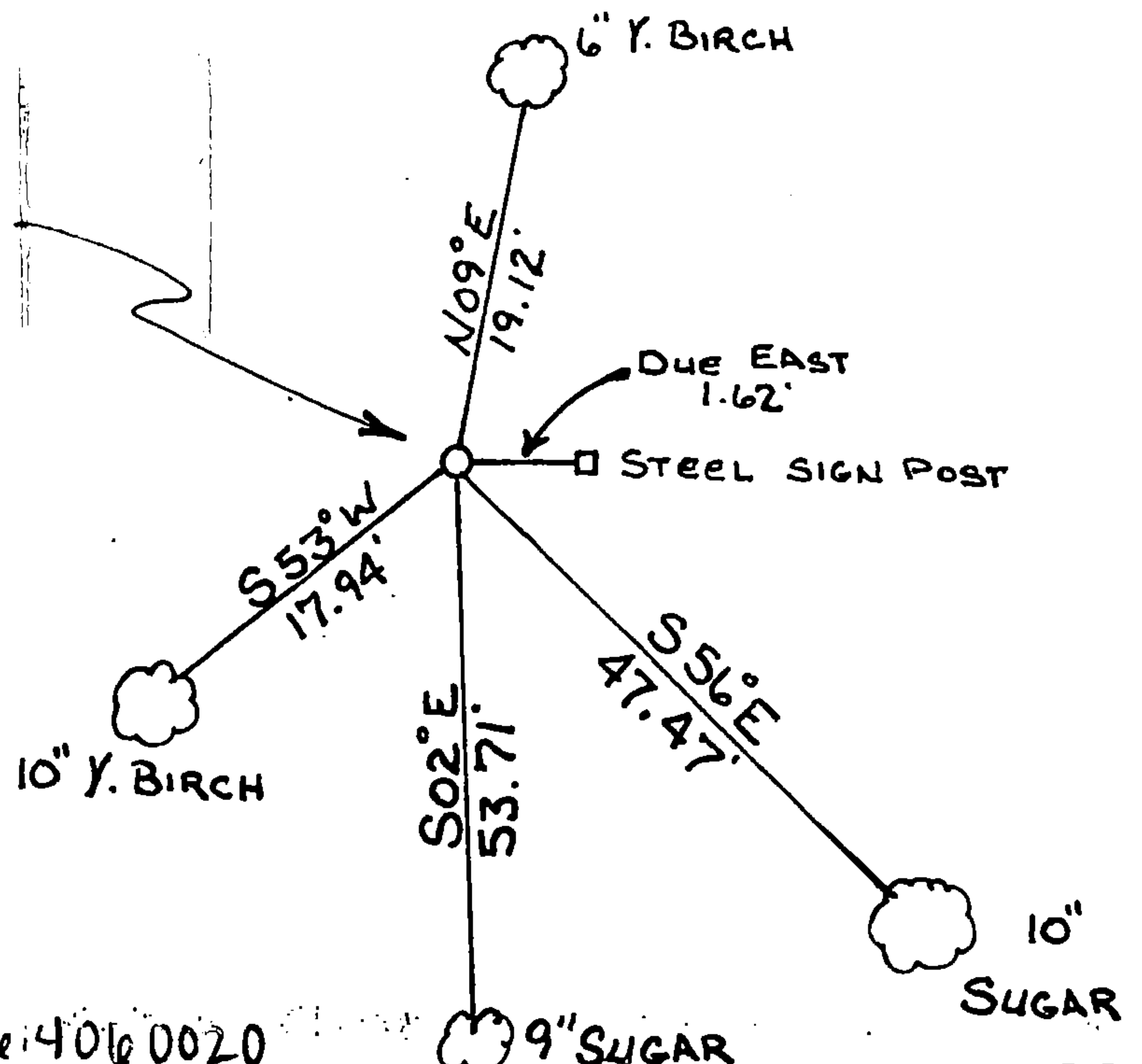
I positioned a math point at the corner location from which to search and found no evidence of the original bearing trees. The corner position falls on high ground in open hardwoods which is not consistent with the original notes pointing out swamp calls.

I set the corner at the proportionate position.

- (c) In the plan view drawing below, provide reference ties to at least 4 witness monuments, or, if the location is within a municipality, to at least 2 witness monuments. (witness monuments shall be made of concrete, natural stone, iron or other equally durable material.)

- (d) Show a plan view drawing depicting the relevant monuments and reference ties which is sufficient in detail to enable accurate relocation of the corner monument if the corner monument is disturbed. Indicate north.

Set a 2 1/4" diameter x 36" long aluminum monument with a 3 1/4" diameter aluminum cap stamped: 1/4, S6, S7, T36N, R14E, 1993, S1685



REGISTER'S OFFICE
 Forest County, Wis.
 Received for record this 2nd day
 of June A.D., 1993 at
12 o'clock P.M. and recorded
 in Vol. Corral Restorations
 page E-3
Paul C. DeLo
 Register of Deeds

