

CERTIFIED LAND CORNER RESTORATION

Index No. E-10

E 10

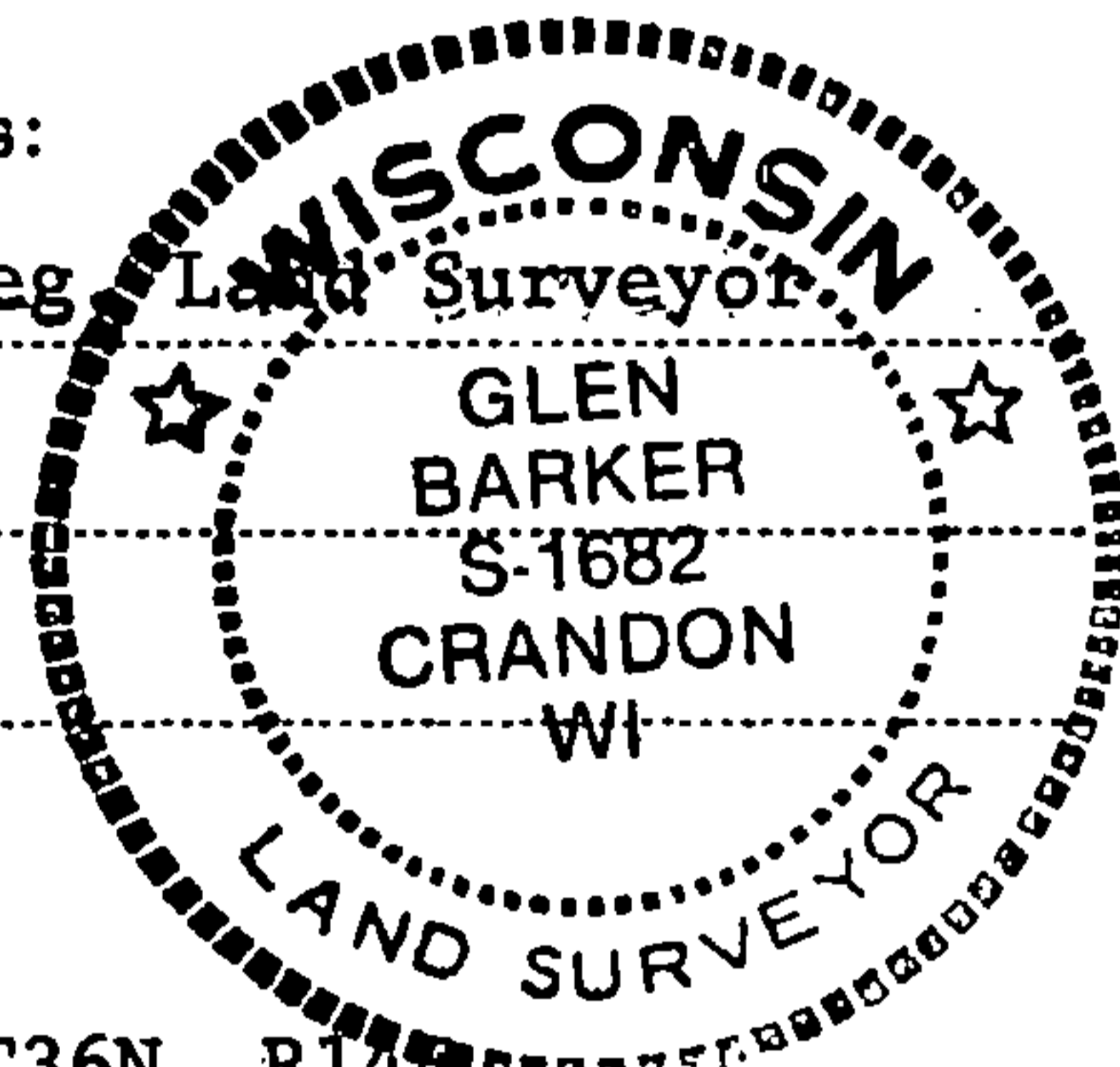
State of Wisconsin }
County of Forest } ss.

I Glen Barker, do hereby certify that on the 11th day of November, 1982, I found established ~~at the~~ W 1/16 corner of Sections 4 & 9 Township 36, North, Range 14 East, Fourth Principal Meridian, as described hereon; and that from this evidence I established a new monument and accessories as described hereon to perpetuate the original location of this corner.

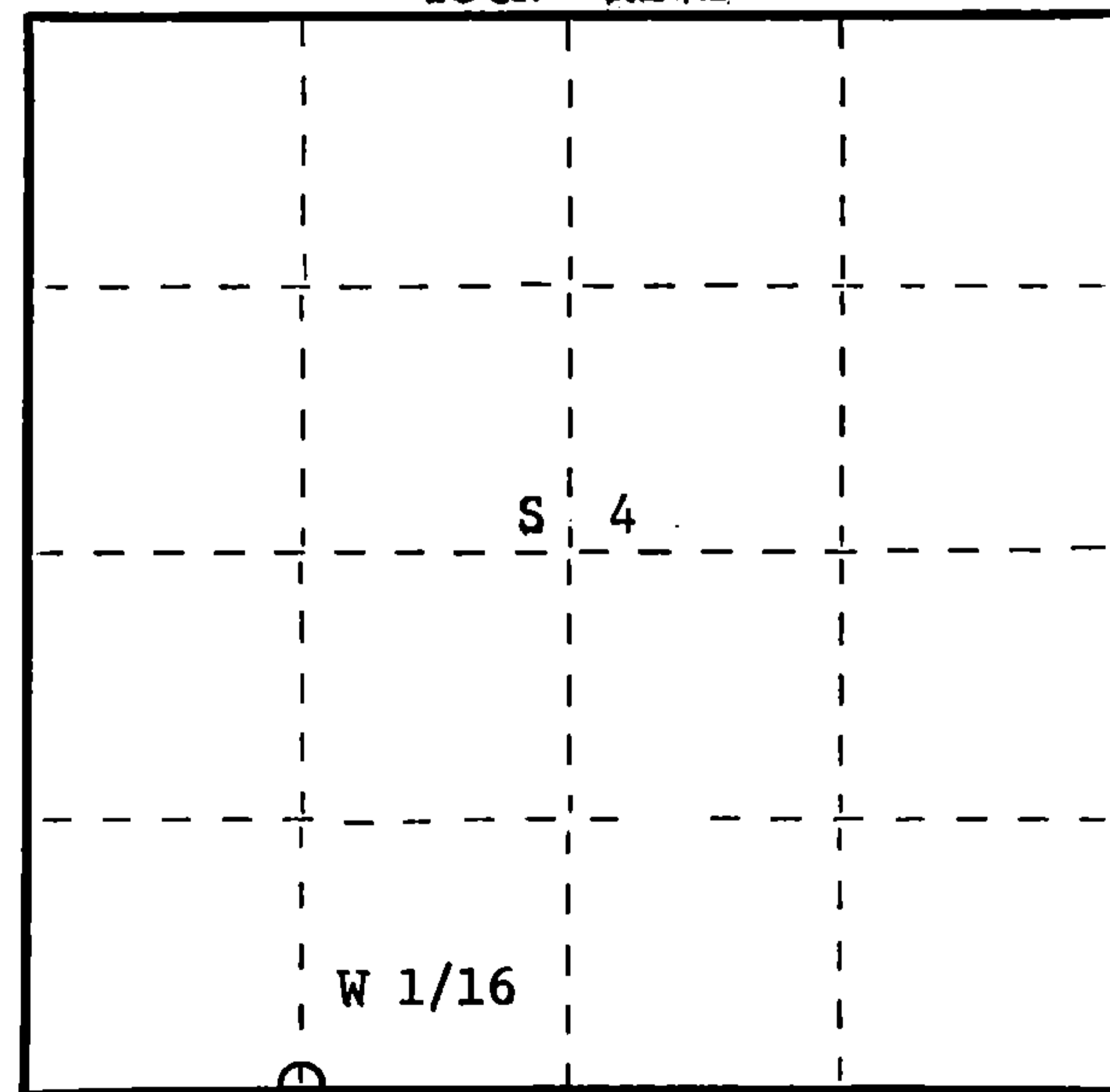
Resident witnesses:

J. Claflin, Reg. Land Surveyor

H. Wagoner



T36N R14E



○ = Corner monument restored.

History of original corner establishment:
No evidence of any previous corner.

Description of corner evidence found:

Total distance from section corner 4-5-8-9 to 1/4 corner between sections 4 & 9 is 2579.60 feet at bearing N 85-12-14 E.
Set W 1/16 1289.80 feet intermediate.

Description of monument and accessories I established to perpetuate the original location of this corner.

Set a 1" iron pipe with 2" diameter alloy cap - stamped:
Monument projects 18" above ground.
Marked NBT's:

Basswood 12" N2°E 19.80 feet
Elm 10" N58W 38.45 feet
scribed 1/16 B.T.

S1682
T36N R14E
W 1/16 $\begin{matrix} S+4 \\ S+9 \end{matrix}$
CPI-1982

Dated at Rhinelander, Wis., this 21st day of March, 1982

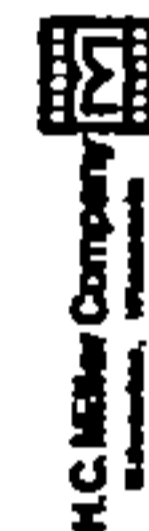
Signature Glen Barker Title Registered Land Surveyor Registration No. S-1682
(County Surveyor, Registered Land Surveyor, or other duly authorized official)

Office of Register of Deeds, County of Forest, I hereby certify that the within instrument was filed in this office for record on the 7th day of April, 1983 at 9:30 o'clock A. M.

Eugene Staszynski (Register of Deeds) DOCUMENT NO. **123144**

By.....Deputy

Stock No. 26272



FORM 985

H3614040030