

Document Number

189311

REGISTER'S OFFICE
Forest County, Wis.

Received for record this 18th day
of November A.D., 2005 at
3:55 o'clock P. M. and recorded
in Vol. Corner Restoration
page X-21

Kay Swanson
Deputy
Register of Deeds

U.S. PUBLIC LAND SURVEY MONUMENT RECORD

(As Required By s. A-E 5.02, WI ADM. CODE)

HISTORY OF ORIGINAL CORNER ESTABLISHMENT AND SUBSEQUENT RESTORATIONS AND DESCRIPTION OF ANY RECORD, MONUMENT, OCCUPATIONAL, TESTIMONIAL, OR OTHER EVIDENCE CONSIDERED:

1865 - JAMES NOWLIN, SURVEYOR, SET POST

SET THE FOLLOWING WITNESSES:
TAMARACK 12" N21°E 125 LINKS
TAMARACK 10" N09°W 100 LINKS

1938 - C.E. WALKER, FOUND WOOD POST. SET 2" IRON PIPE 5' LONG WITH BRASS CAP.

1976 - THOMAS R. ARNOTT, SURVEYOR, S-887, FOUND MONUMENT SET BY C.E. WALKER.

SET THE FOLLOWING WITNESSES:
BLACK SPRUCE 4" N07°W 34.01 FEET
BLACK SPRUCE 4" N53°E 47.70 FEET

CORNER WAS: (CHECK ALL THAT APPLY)

- RESTORED THROUGH ACCEPTANCE OF AN OBLITERATED LOCATION
- RESTORED THROUGH ACCEPTANCE OF A FOUND PERPETUATED LOCATION
- CONSIDERED A LOST CORNER AND REESTABLISHED THROUGH LOST CORNER PROPORTIONATE METHODS (INCLUDING A PLAN VIEW DRAWING SHOWING DISTANCES AND DIRECTIONS TO OTHER PUBLIC LAND SURVEY CORNERS USED FOR PROPORTIONING AND DETERMINING THE CORNER LOCATION)
- RESTORED OF REESTABLISHED IN A LOCATION THAT DIFFERS FROM A PREVIOUS RESTORATION OF REESTABLISHMENT (INCLUDE A PLAN VIEW DRAWING AND INDICATE WHAT WAS SET AND/OR FOUND)

DESCRIBE THE MONUMENT AND ACCESSORIES USED TO PERPETUATE THE LOCATION OF THIS CORNER. (INCLUDE A PLAN VIEW DRAWING AND INDICATE WHAT WAS SET AND/OR FOUND)

FOUND 2" IRON PIPE w/BRASS CAP.

FOUND THE FOLLOWING WITNESSES:

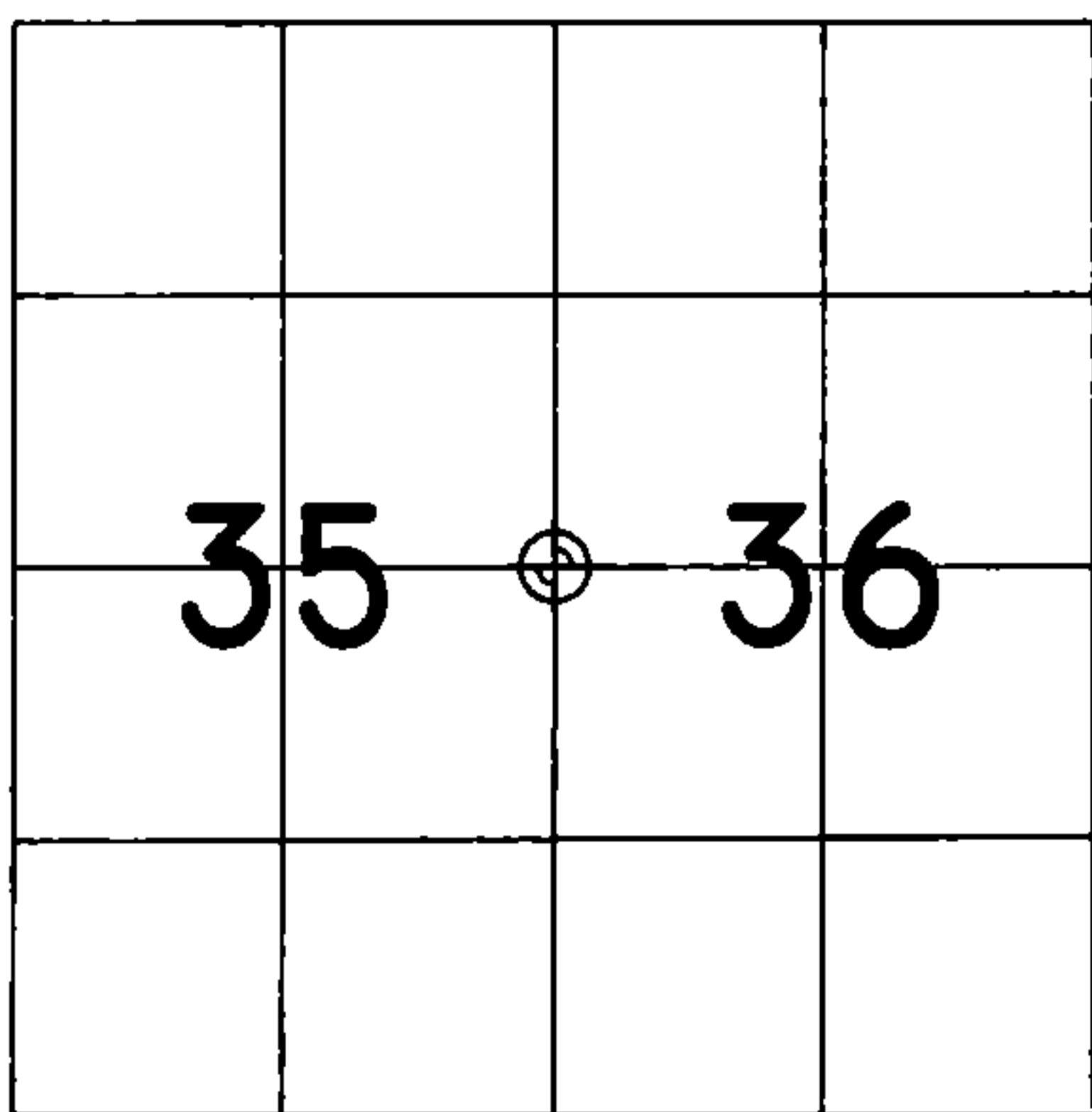
BLACK SPRUCE 5" N02°W 34.15 FEET - SET D.H. NAIL IN TREE.
BLACK SPRUCE 5" N59°E 47.80 FEET - SET D.H. NAIL IN TREE.

SET THE FOLLOWING WITNESSES:

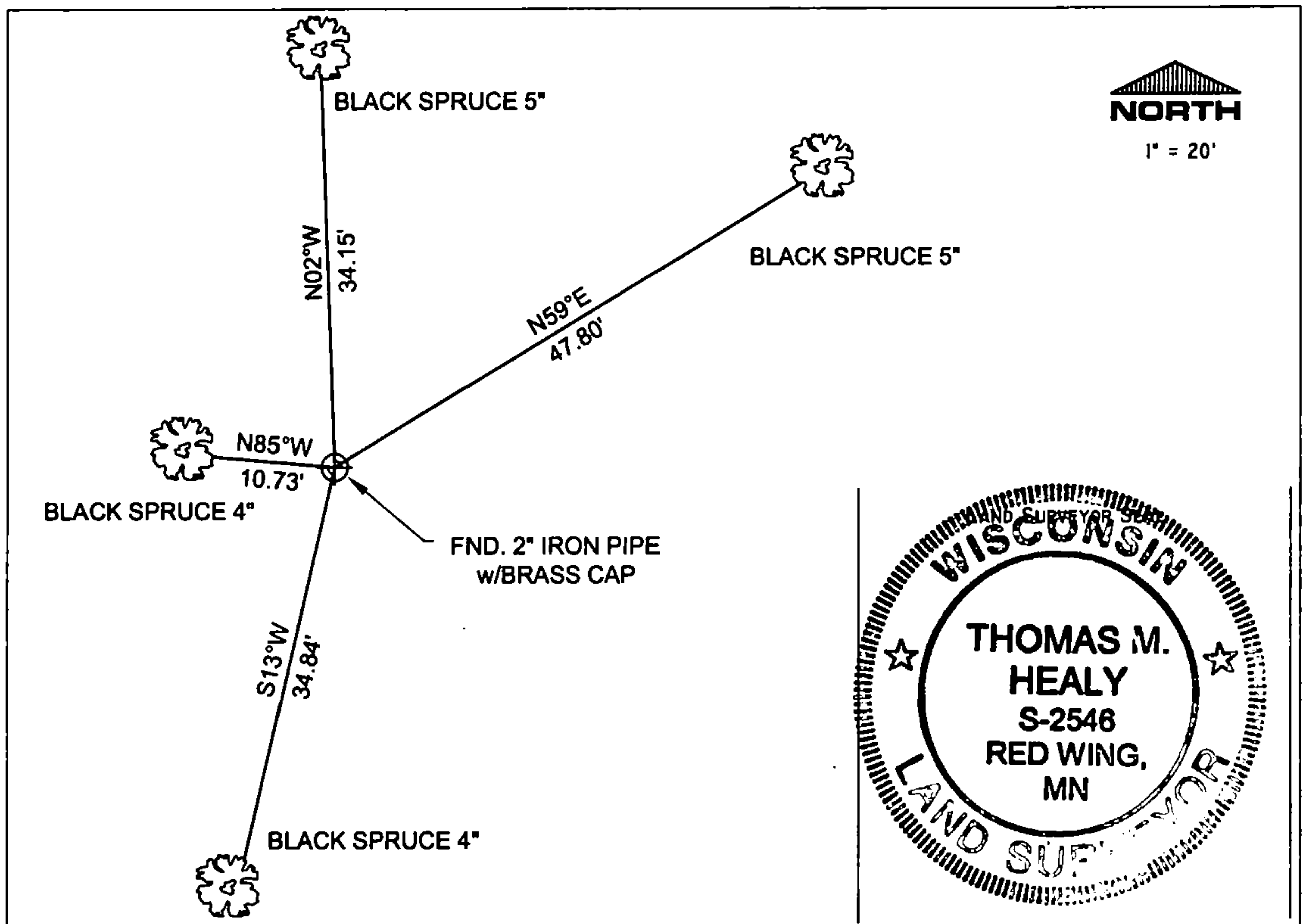
BLACK SPRUCE 4" S13°W 34.84 FEET - SET D.H. NAIL IN TREE.
BLACK SPRUCE 4" N85°W 10.73 FEET - SET D.H. NAIL IN TREE.

ALL TREES HAVE CHEST & STUMP BLAZES.

THE EAST 1/4
CORNER OF SECTION 35
T. 36 N., R. 13 E.,
FOREST COUNTY, WISCONSIN



⊕ = LOCATION OF CORNER



I, THOMAS M. HEALY R.L.S. 2546

(TYPE OR PRINT NAME) CERTIFY THAT THE CORNER LOCATION SHOWN ON THIS ABOVE RECORD WAS DETERMINED BY ME OR UNDER MY DIRECTION AND CONTROL AND THAT THIS U.S. PUBLIC LAND SURVEY MONUMENT RECORD IS CORRECT AND COMPLETE TO THE BEST OF MY KNOWLEDGE AND BELIEF.

INDEX No. X-21

Thomas M. Healy
SIGNATURE DATE 11-17-05

43013352000

X-21

CERTIFIED LAND CORNER RESTORATION

Index No. **X21**

State of Wisconsin }
County of Forest } ss.

History of original corner establishment:

Original subdivision by James Nowlin June 2 - June 12, 1865

Tamarac	12	N21E	125 Lks.
Tamarac	10	N9W	100 Lks.

I Thomas R. Arnott, do hereby certify that on the 28th day of January, 1976, I found evidence of the 1/4 corner of sections 35 & 36 Township 36, North, Range 13 E, Fourth Principal Meridian, as described hereon; and that from this evidence I established a new monument and accessories as described hereon to perpetuate the original location of this corner.

Description of corner evidence found:

2" iron pipe 5' long with brass cap set by C.E. Walker in 1938
Wood Post found

Resident witnesses:

.....
.....
.....

Description of monument and accessories I established to perpetuate the original location of this corner.

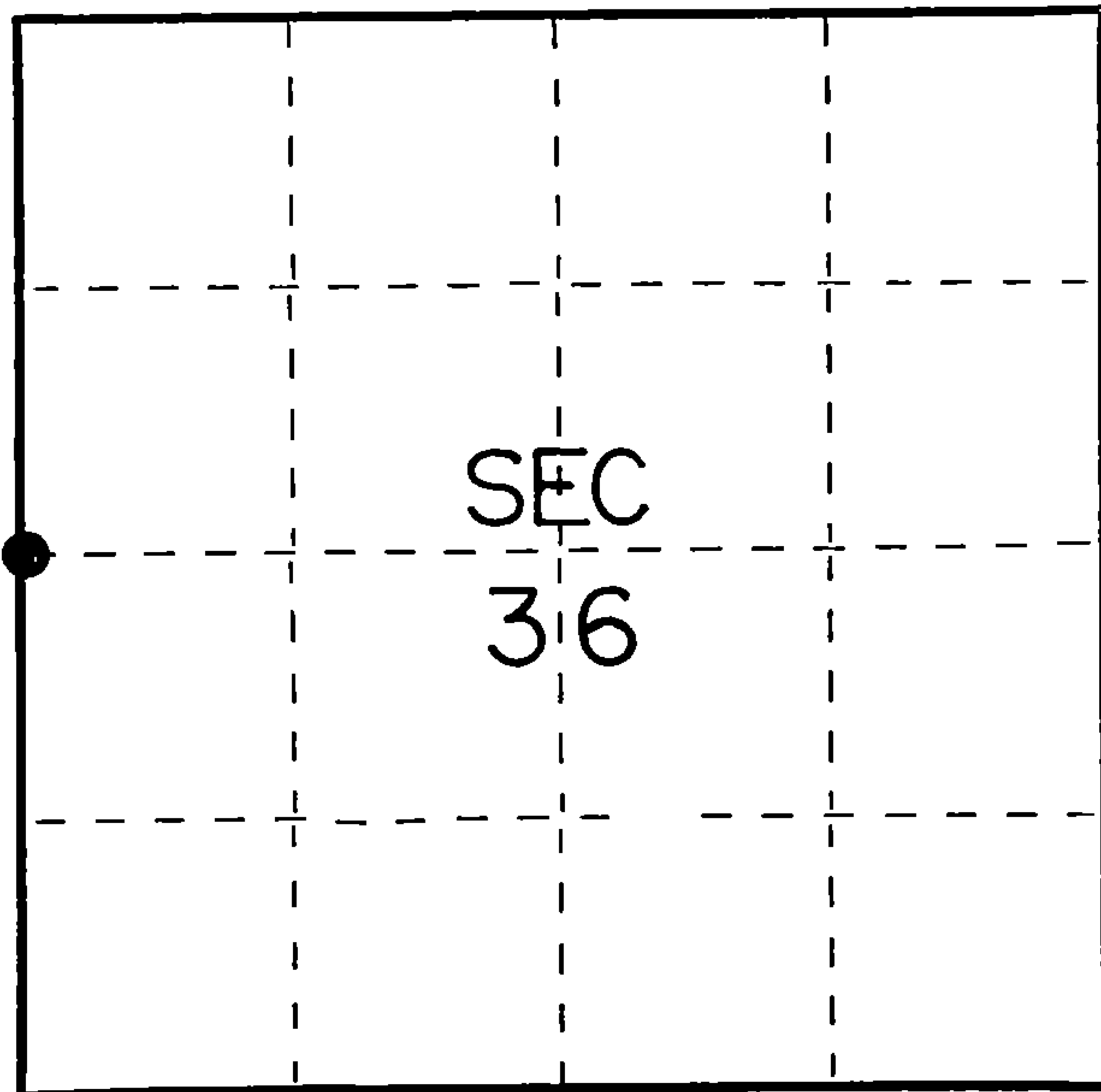
Left monument set by Walker

Ties:

B. Spruce	4	N7W	34.01 feet
B. Spruce	4	N53E	47.70 feet



FORM 985 H. C. MILLER CO., MILWAUKEE



○ = Corner monument restored.

Dated at Grandon, Wis., this 2nd day of February, 1976

Signature Thomas Arnott Title Surveyor Registration No. S-887
(County Surveyor, Registered Land Surveyor, or other duly authorized official)

Office of Register of Deeds, County of Forest, I hereby certify that the within instrument was filed in this office for record on the 2nd day of February, 1976 at 10 o'clock A. M.

Eugene Stetyn Document Number **108672**
(Register of Deeds)

By..... Deputy

43613352000