

Document Number

189323

REGISTER'S OFFICE
Forest County, Wis.

Received for record this 18th day
of November A.D., 2005 at
3:55 o'clock P.M., and recorded
in Vol. Corner Restoration
page V-21

Kay Swanson, Deputy
Register of Deeds

U.S. PUBLIC LAND SURVEY MONUMENT RECORD

(AS REQUIRED BY S. A-E 5.02, WI ADM. CODE)

HISTORY OF ORIGINAL CORNER ESTABLISHMENT AND SUBSEQUENT RESTORATIONS AND DESCRIPTION OF ANY RECORD, MONUMENT, OCCUPATIONAL, TESTIMONIAL, OR OTHER EVIDENCE CONSIDERED:

1865 - JAMES NOWLIN, SURVEYOR, SET POST

SET THE FOLLOWING WITNESSES:
SUGAR 10" N23°E 13 LINKS
HEMLOCK 12" S67°W 16 LINKS

1938 - C.E. WALKER, SET 2" IRON PIPE 5' LONG WITH BRASS CAP.

1975 - THOMAS R. ARNOTT, SURVEYOR, S-887, FOUND MONUMENT SET BY C.E. WALKER.

SET THE FOLLOWING WITNESSES:
MAPLE 10" N89°W 34.60 FEET
MAPLE 6" N16°E 29.08 FEET
ASH 8" S60°W 25.47 FEET

CORNER WAS: (CHECK ALL THAT APPLY)

- RESTORED THROUGH ACCEPTANCE OF AN OBLITERATED LOCATION
- RESTORED THROUGH ACCEPTANCE OF A FOUND PERPETUATED LOCATION
- CONSIDERED A LOST CORNER AND REESTABLISHED THROUGH LOST CORNER PROPORTIONATE METHODS (INCLUDING A PLAN VIEW DRAWING SHOWING DISTANCES AND DIRECTIONS TO OTHER PUBLIC LAND SURVEY CORNERS USED FOR PROPORTIONING AND DETERMINING THE CORNER LOCATION)
- RESTORED OR REESTABLISHED IN A LOCATION THAT DIFFERS FROM A PREVIOUS RESTORATION OF REESTABLISHMENT (INCLUDE A PLAN VIEW DRAWING AND INDICATE WHAT WAS SET AND/OR FOUND)

DESCRIBE THE MONUMENT AND ACCESSORIES USED TO PERPETUATE THE LOCATION OF THIS CORNER. (INCLUDE A PLAN VIEW DRAWING AND INDICATE WHAT WAS SET AND/OR FOUND)

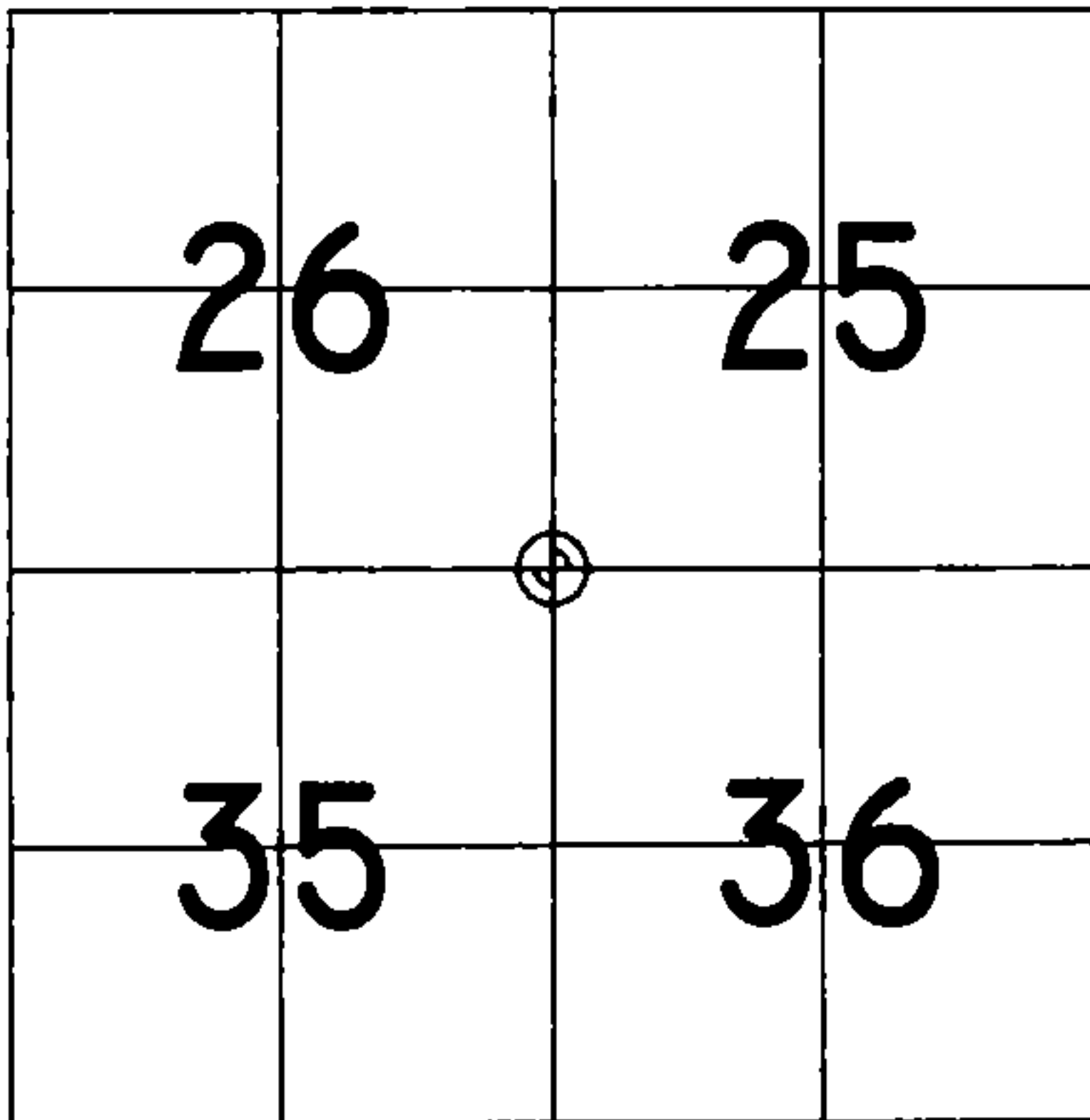
FOUND 2" IRON PIPE w/BRASS CAP.

SET THE FOLLOWING WITNESSES:

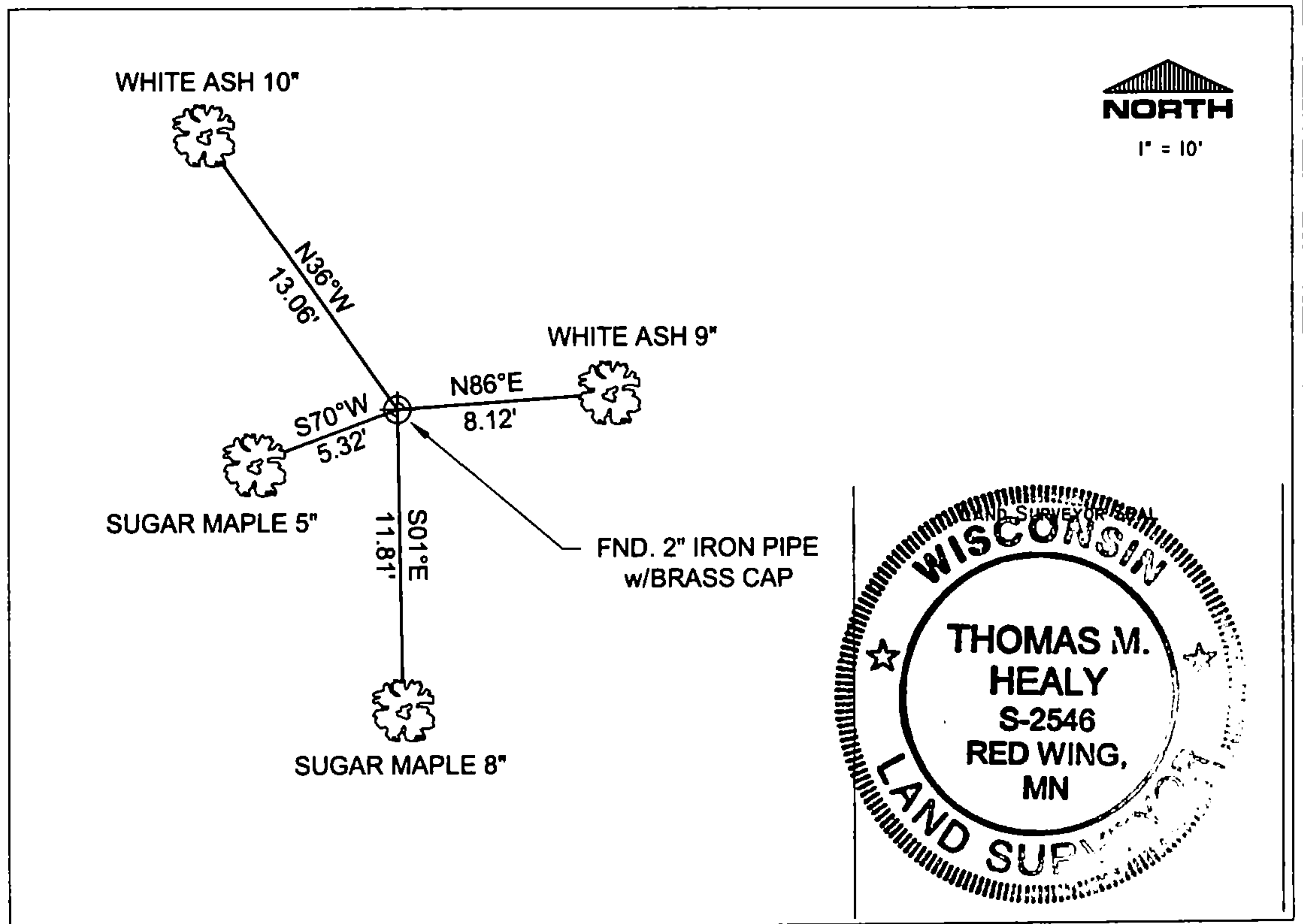
WHITE ASH 9" N86°E 8.12 FEET - SET D.H. NAIL IN TREE.
SUGAR MAPLE 8" S01°E 11.81 FEET - SET D.H. NAIL IN TREE.
WHITE ASH 10" N36°W 13.06 FEET - SET D.H. NAIL IN TREE.
SUGAR MAPLE 5" S70°W 5.32 FEET - SET D.H. NAIL IN TREE.

ALL TREES HAVE CHEST & STUMP BLAZES.

THE NORTHEAST
CORNER OF SECTION 35,
T. 36 N., R. 13 E.,
FOREST COUNTY, WISCONSIN



⊕ = LOCATION OF CORNER



I, THOMAS M. HEALY R.L.S. 2546

(TYPE OR PRINT NAME) CERTIFY THAT THE CORNER LOCATION SHOWN ON THIS ABOVE RECORD WAS DETERMINED BY ME OR UNDER MY DIRECTION AND CONTROL AND THAT THIS U.S. PUBLIC LAND SURVEY MONUMENT RECORD IS CORRECT AND COMPLETE TO THE BEST OF MY KNOWLEDGE AND BELIEF.

INDEX No. V-21

Thomas M. Healy 11-17-05
SIGNATURE DATE

43613260000

V-21

CERTIFIED LAND CORNER RESTORATION

Index No. V21

State of Wisconsin }
County of Forest } ss.

History of original corner establishment:

Original subdivision by James L. Nowlin June 2 - June 12, 1865

Sugar 10 N23E 13 Lks.
Hemlock 12 S67W 16 Lks.

Description of corner evidence found:

2" iron pipe 5' long with brass cap set by C.E.Walker in 1938

I Thomas R. Arnott, do hereby certify that on the 5th day of December, 1975, I found evidence of the Section corner of sections 25, 26, 35, & 36 Township 36, North, Range 13 E, Fourth Principal Meridian, as described hereon; and that from this evidence I established a new monument and accessories as described hereon to perpetuate the original location of this corner.

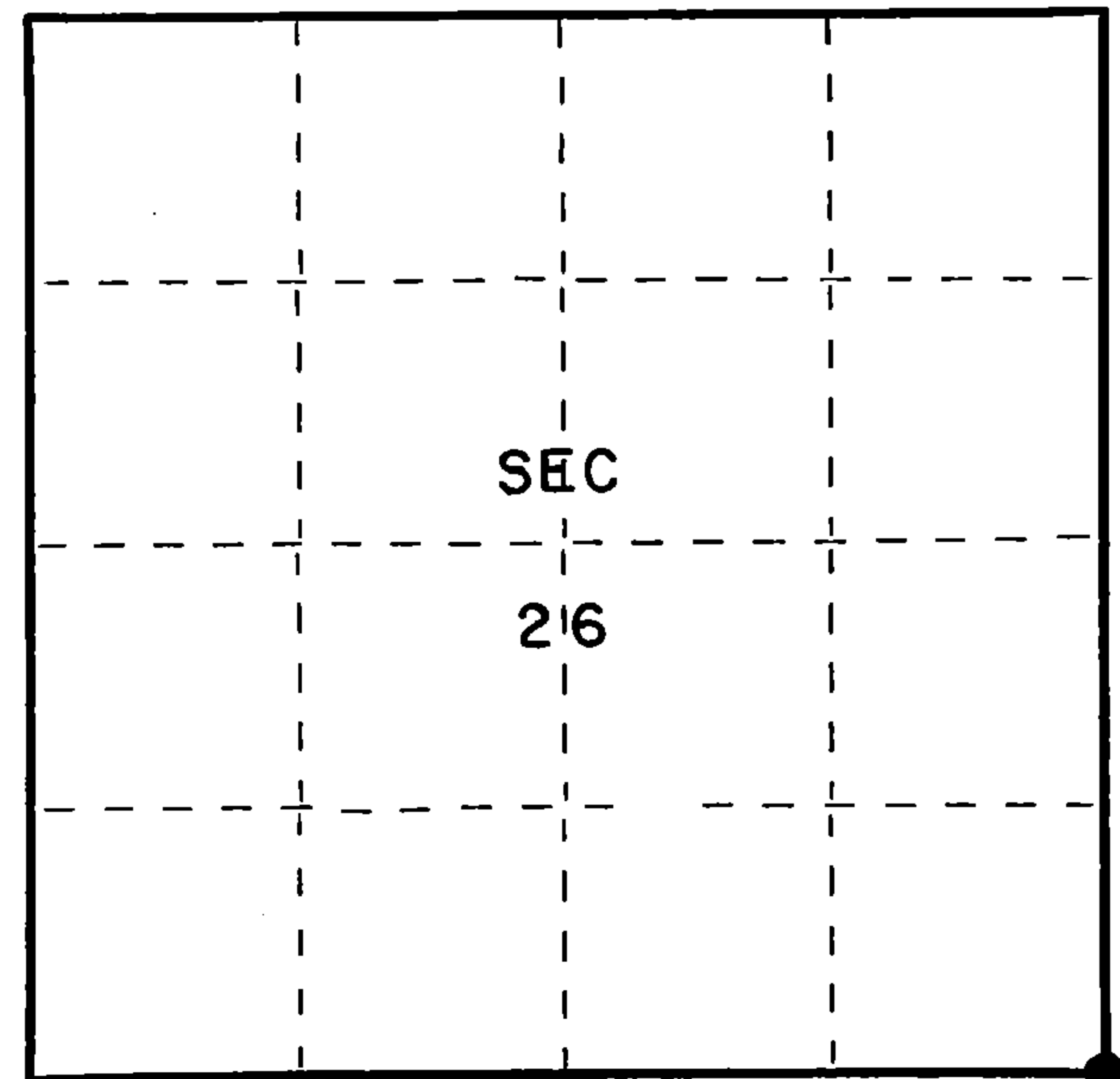
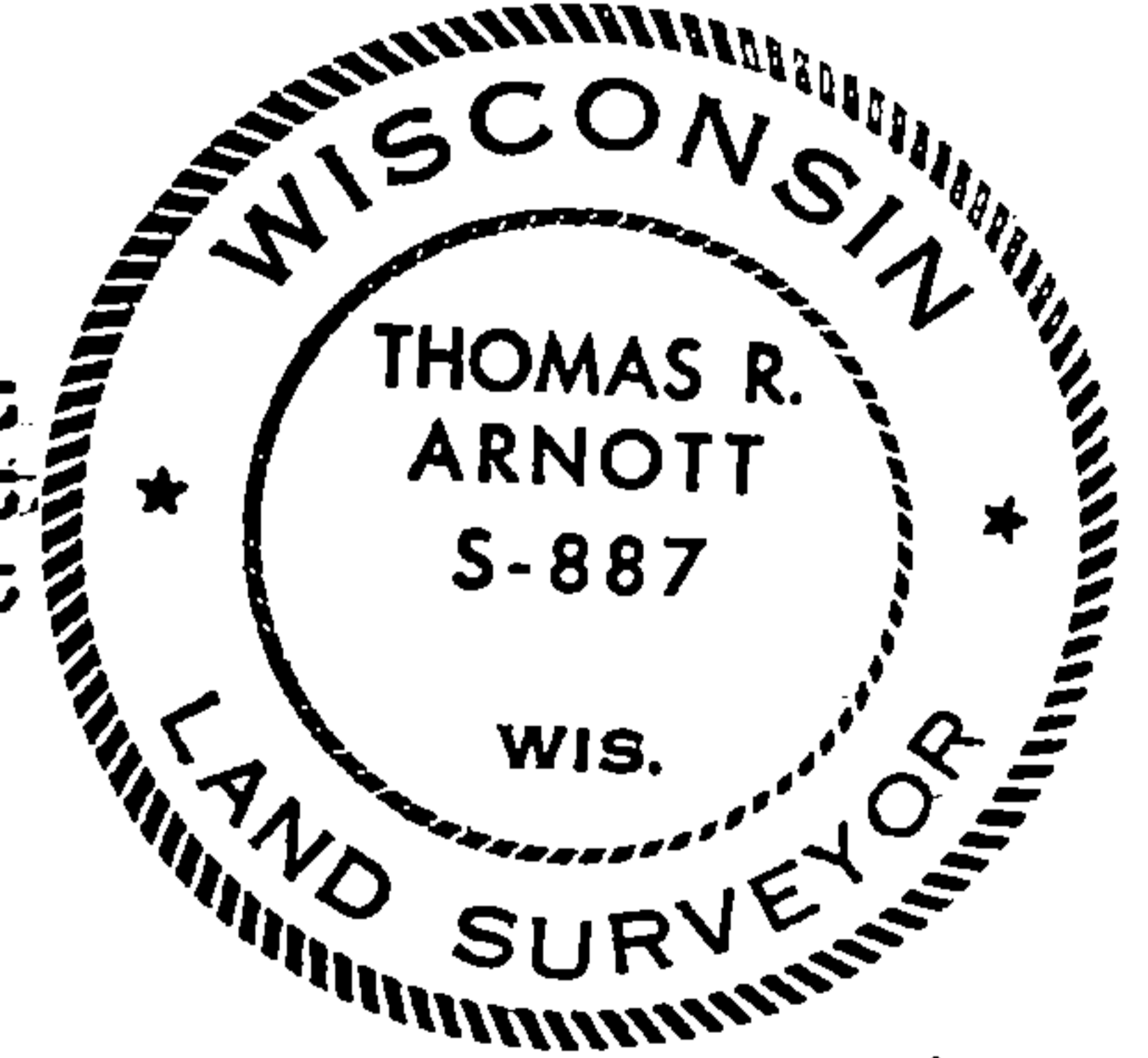
Resident witnesses:

.....
.....
.....

Description of monument and accessories I established to perpetuate the original location of this corner.

Left monument set by Walker

Ties:
Maple 10 N89W 34.60 feet
Maple 6 N16E 29.08 feet
Ash 8 S60W 25.47 feet



○ = Corner monument restored.

Dated at Crandon Wis., this 15th day of December, 1975

Signature Thomas Arnott Title Land Surveyor Registration No. S-887
(County Surveyor, Registered Land Surveyor, or other duly authorized official)

Office of Register of Deeds, County of Forest, I hereby certify that the within instrument was filed in this office for record on the 15th day of December, 1975 at 11 o'clock A. M.

Eugene Stutzman Document Number 108377
(Register of Deeds)

By..... Deputy

FORM 985 H. C. MILLER CO., MILWAUKEE

4301326000