

CERTIFIED LAND CORNER RESTORATION

Index No. **V23**

State of Wisconsin }
County of Forest } ss.

History of original corner establishment:

Original subdivision by James L. Nowlin June 2 - June 12, 1865

Birch	30	N32W	15 Lks.
Sugar	8	S60E	18 Lks.

Description of corner evidence found:

2" iron pipe 5' long with brass cap set by G.E. Walker in 1938

I Thomas R. Arnett, do hereby certify that on the 5th day of December, 1975, I found evidence of the 1/4 corner of sections 25 & 36 Township 36, North, Range 13 E, Fourth Principal Meridian, as described hereon; and that from this evidence I established a new monument and accessories as described hereon to perpetuate the original location of this corner.

Resident witnesses:

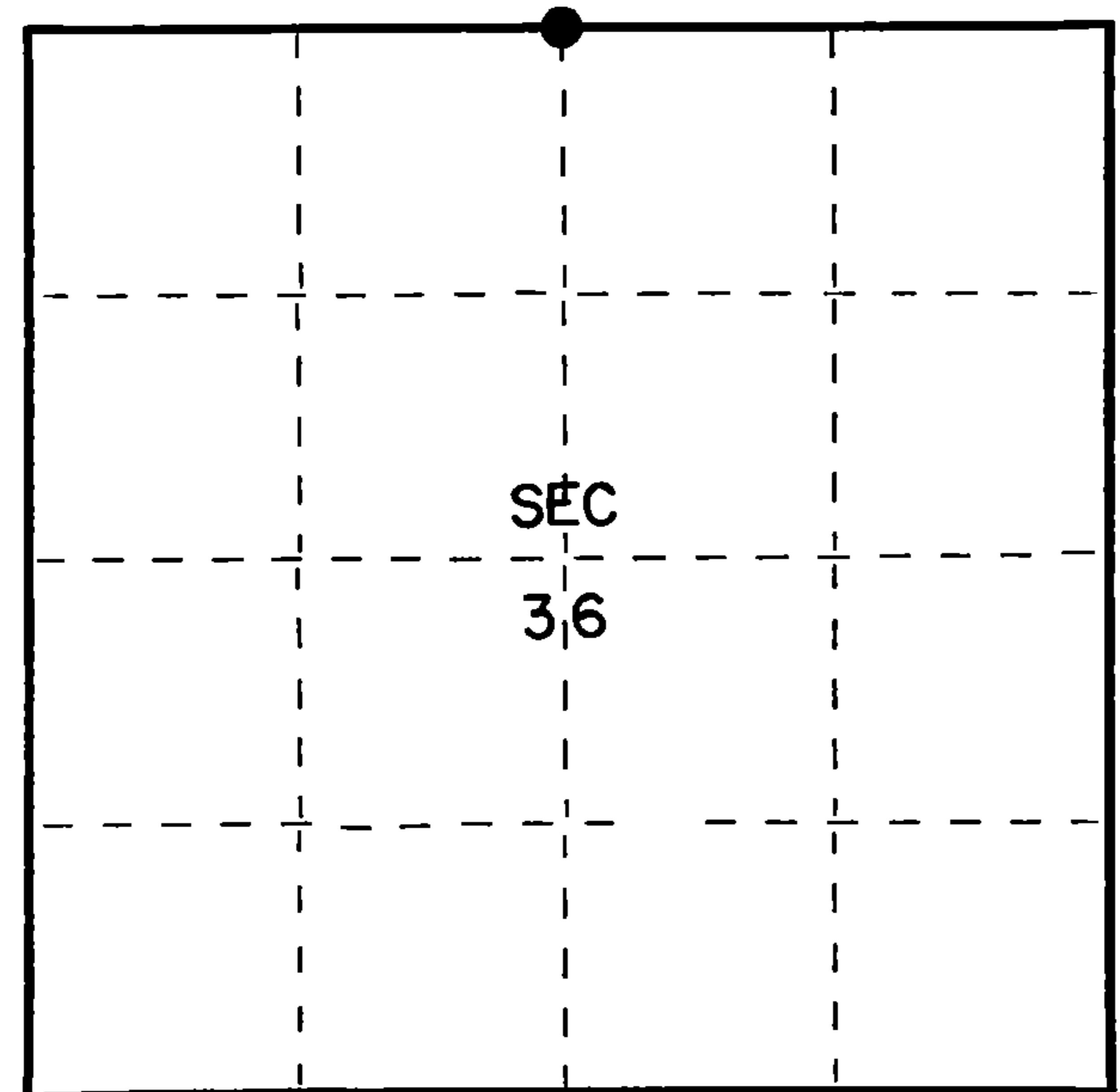
.....
.....
.....

Description of monument and accessories I established to perpetuate the original location of this corner.

Left monument set by Walker

Ties:

Maple	6	N36E	4.74 feet
Y. Birch	12	S46E	13.05 feet



○ = Corner monument restored.

Dated at Grandon, Wis., this 15th day of December, 1975.

Signature Thomas Arnett Title Land Surveyor Registration No. S-887
(County Surveyor, Registered Land Surveyor, or other duly authorized official)

Office of Register of Deeds, County of Forest, I hereby certify that the within instrument was filed in this office for record on the 15th day of December, 1975 at 11 o'clock A. M.

Eugene Stagny Document Number **108378**
(Register of Deeds)
By..... Deputy

FORM 985 H. G. MILLER CO., MILWAUKEE

43013250020

Document Number

189321

REGISTER'S OFFICE
Forest County, Wis.

Received for record this 18th day
of November A.D., 2005 at
3:55 o'clock P.M. and recorded
in Vol. Corner Restoration
page V-23

Kay Swanson, Deputy
Register of Deeds

U.S. PUBLIC LAND SURVEY MONUMENT RECORD

(AS REQUIRED BY S. A-E 5.02, WI ADM. CODE)

HISTORY OF ORIGINAL CORNER ESTABLISHMENT AND SUBSEQUENT RESTORATIONS AND DESCRIPTION OF ANY RECORD, MONUMENT, OCCUPATIONAL, TESTIMONIAL, OR OTHER EVIDENCE CONSIDERED:

1865 - JAMES NOWLIN, SURVEYOR, SET POST

SET THE FOLLOWING WITNESSES:
BIRCH 30" N32°W 15 LINKS
SUGAR 8" S60°E 18 LINKS

1938 - C.E. WALKER, SET 2" IRON PIPE 5' LONG WITH BRASS CAP.

1975 - THOMAS R. ARNOTT, SURVEYOR, S-887, FOUND MONUMENT SET BY C.E. WALKER.

SET THE FOLLOWING WITNESSES:
MAPLE 6" N38°E 4.74 FEET
YELLOW BIRCH 12" S48°E 13.05 FEET

CORNER WAS: (CHECK ALL THAT APPLY)

- RESTORED THROUGH ACCEPTANCE OF AN OBLITERATED LOCATION
- RESTORED THROUGH ACCEPTANCE OF A FOUND PERPETUATED LOCATION
- CONSIDERED A LOST CORNER AND REESTABLISHED THROUGH LOST CORNER PROPORTIONATE METHODS (INCLUDING A PLAN VIEW DRAWING SHOWING DISTANCES AND DIRECTIONS TO OTHER PUBLIC LAND SURVEY CORNERS USED FOR PROPORTIONING AND DETERMINING THE CORNER LOCATION)
- RESTORED OR REESTABLISHED IN A LOCATION THAT DIFFERS FROM A PREVIOUS RESTORATION OF REESTABLISHMENT (INCLUDE A PLAN VIEW DRAWING AND INDICATE WHAT WAS SET AND/OR FOUND)

DESCRIBE THE MONUMENT AND ACCESSORIES USED TO PERPETUATE THE LOCATION OF THIS CORNER. (INCLUDE A PLAN VIEW DRAWING AND INDICATE WHAT WAS SET AND/OR FOUND)

FOUND 2" IRON PIPE w/BRASS CAP.

FOUND THE FOLLOWING WITNESSES:

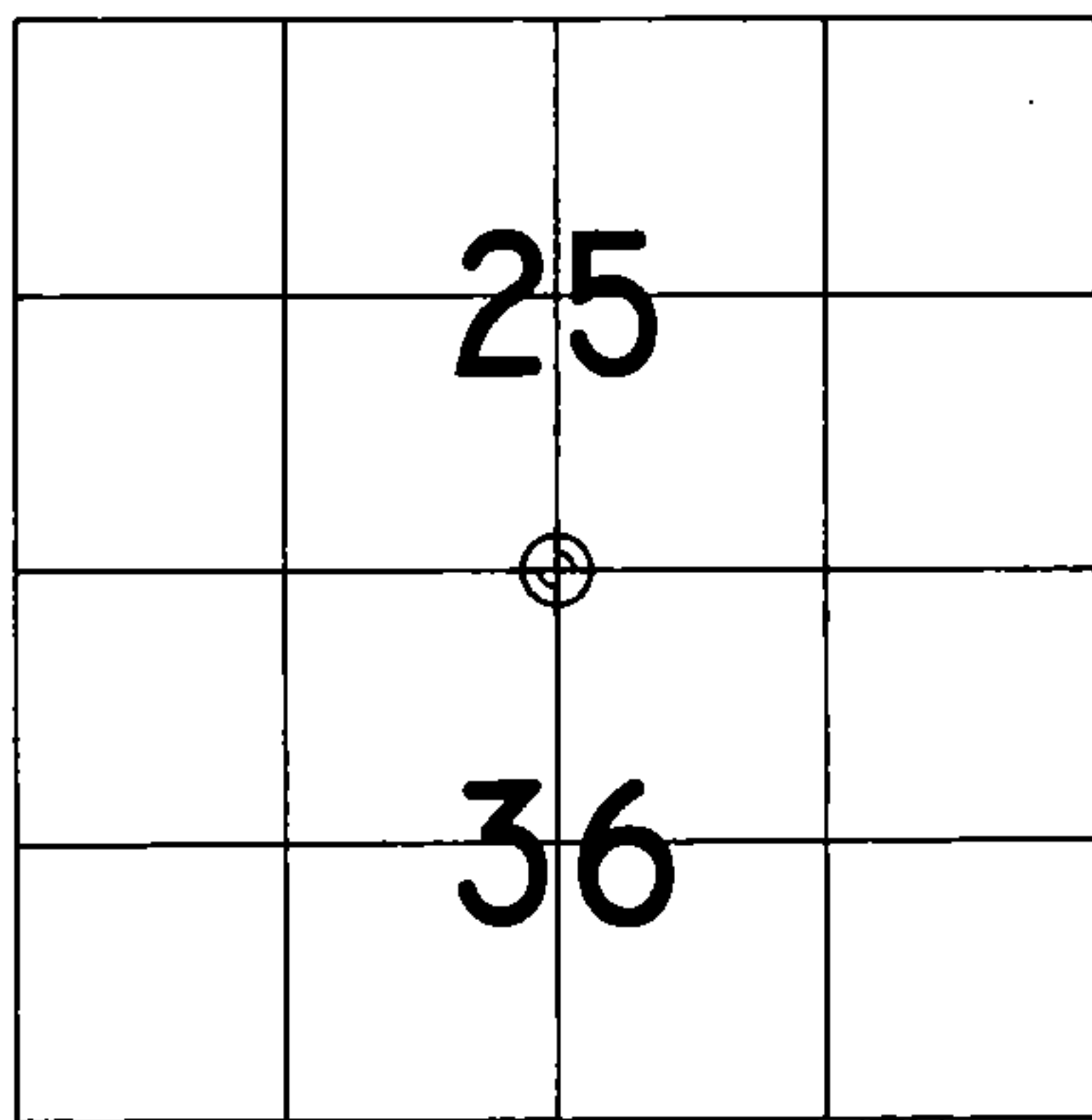
SUGAR MAPLE 6" N09°E 16.30 FEET - SET D.H. NAIL IN TREE.
SUGAR MAPLE 12" N47°E 5.37 FEET - SET D.H. NAIL IN TREE.

SET THE FOLLOWING WITNESSES:

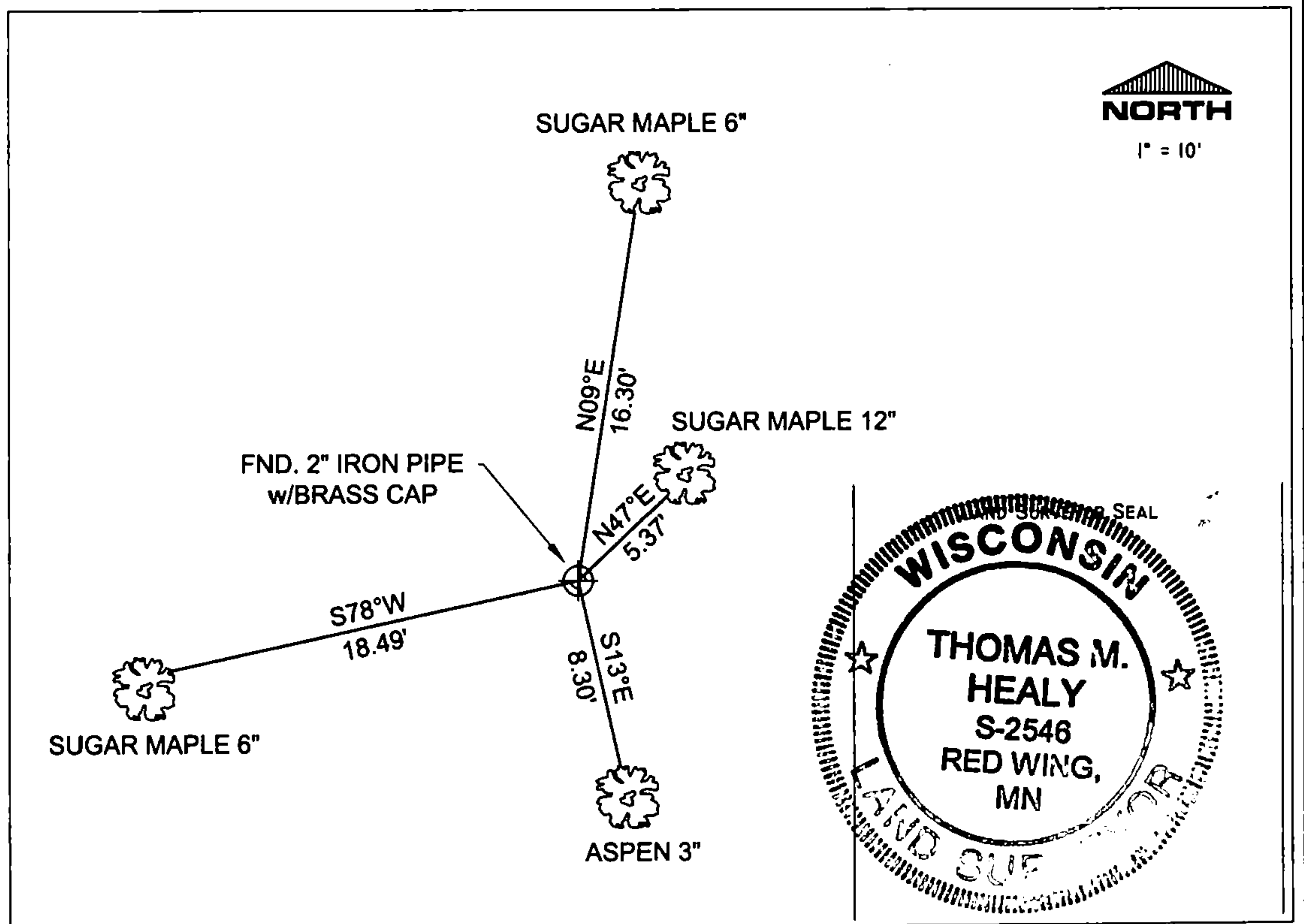
SUGAR MAPLE 6" S78°W 18.49 FEET - SET D.H. NAIL IN TREE.
ASPEN 3" S13°E 8.30 FEET - SET D.H. NAIL IN TREE.

ALL TREES HAVE CHEST & STUMP BLAZES.

THE SOUTH 1/4
CORNER OF SECTION 25,
T. 36 N., R. 13 E.,
FOREST COUNTY, WISCONSIN



⊕ = LOCATION OF CORNER



I, THOMAS M. HEALY R.L.S. 2546

(TYPE OR PRINT NAME) CERTIFY THAT THE CORNER LOCATION SHOWN ON THIS ABOVE RECORD WAS DETERMINED BY ME OR UNDER MY DIRECTION AND CONTROL AND THAT THIS U.S. PUBLIC LAND SURVEY MONUMENT RECORD IS CORRECT AND COMPLETE TO THE BEST OF MY KNOWLEDGE AND BELIEF.

INDEX No. V-23

Thomas M. Healy 11-17-05
SIGNATURE DATE

4361325 0020

V-23