

# U S PUBLIC LAND SURVEY MONUMENT RECORD

NOTE: This form is intended and designed to fulfill all requirements of Wisconsin Administrative Code, Chapter A-E 7.08 U.S. Public Land Survey Monument Record (3) (a-i)

A-E 7.08(3)(a) Identity of corner  
 SOUTH 1/4 CORNER OF SECTION 20  
 TOWNSHIP 36 NORTH  
 RANGE 13 EAST OF THE 4TH PM  
 CITY OF CRANDON,  
 COUNTY OF FOREST

WISCRS - FOREST COUNTY  
 N: 573,887.414 USft  
 E: 838,712.435 USft  
 Datum: NAD83 (2011)  
 GNSS Method RTN - Direct  
 GNSS Control WISCORS VRS



The coordinate value shown has been verified by the average of two or more GPS observations at a markedly different time.

A-E 7.08(3)(b) Description of any record evidence, monument evidence, occupational evidence, testimonial evidence, or any other material evidence.

Original Surveyor: James L. Nowlin

Date of Original Survey Commenced: June 2, 1865  
 Completed: June 12, 1865

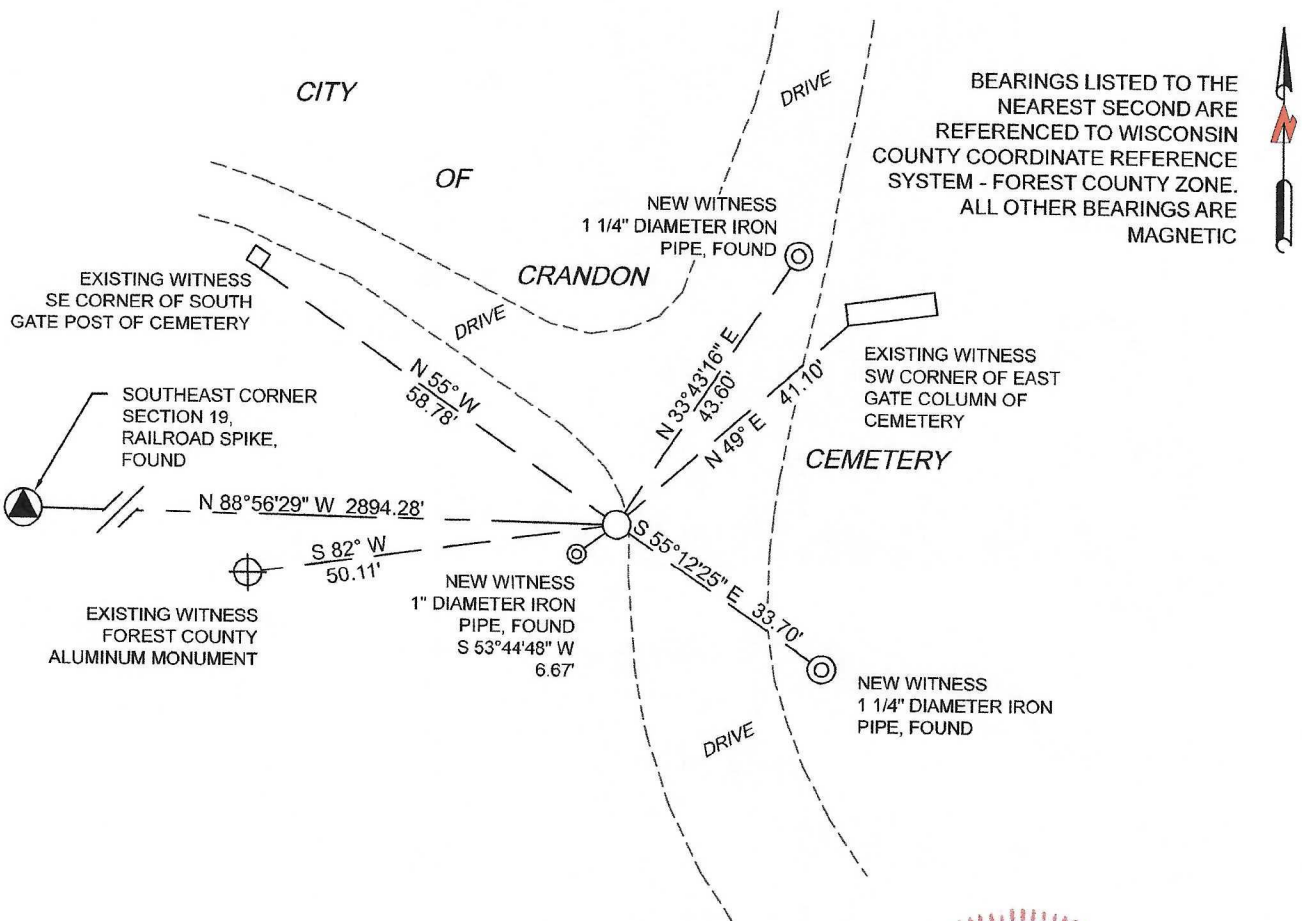
Original Accessories:  
 Hemlock 8 N 46° E 22 lks.  
 Hemlock 20 S 15° W 25 lks.  
 See Previous Monument Record:  
 Index No. R-7  
 Document No. 112700

November 2, 1977 - Surveyor 887 - Thomas R. Arnott - set a 1 1/4" iron pipe by "running lines back from the city". Arnott established 3 new witness monuments.

A-E 7.08(3)(f) The corner is a found perpetuated location.

October 21, 2021 - I found a 1 1/4" diameter iron pipe. I also found 3 of Arnott's witness monuments intact, and established 3 new witness as shown below.

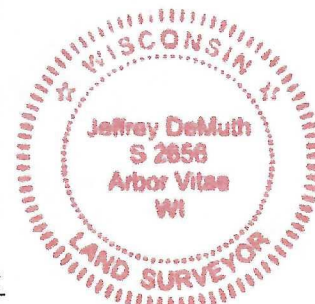
A-E 7.08(3)(c)(d)(e)(h) Plan view of corner with references to at least 4 witness monuments. If in disagreement with previously established corner, show the distances between the two corners and also indicate the ties to the disputed. The directions and distances to other public land survey corners used as evidence or used for determining the corner location.



A-E 7.08(3)(i) I, Jeffrey L. DeMuth, Professional Land Surveyor No. S-2656, hereby certify that the corner location on this record was determined by me or under my direction and control and that this U.S. Public Land Survey Monument Record is correct and complete to the best of my knowledge, and belief

*Jeffrey L. DeMuth*  
 SIGNATURE

February 2, 2022  
 DATE



CERTIFIED LAND CORNER RESTORATION

Index No. **R 7**

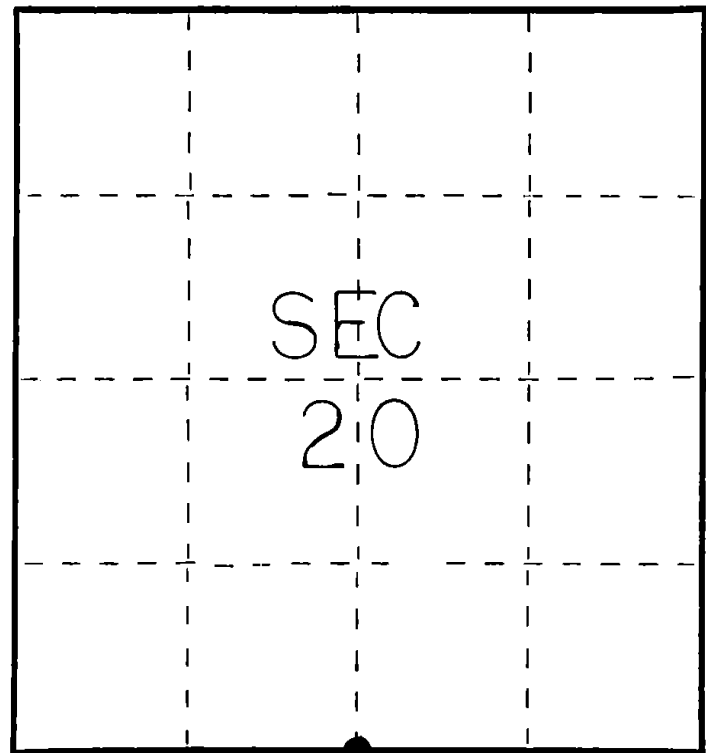
State of Wisconsin }  
County of **Forest** } ss.

I **Thomas R. Arnott**, do hereby certify that on the **8th** day of **July**, 19 **77**, I found evidence of the **1/4** corner of **sections 20 & 29** Township **36**, North, Range **13 E**, Fourth Principal Meridian, as described hereon; and that from this evidence I established a new monument and accessories as described hereon to perpetuate the original location of this corner.

Resident witnesses:

**Larry Lyons**

FORM 985 H. C. MILLER CO., MILWAUKEE



○ = Corner monument restored.

History of original corner establishment:

Original survey by James L. Kowlin June 2 - June 12, 1865

Hemlock 8 N46E 22 lks.  
Hemlock 20 S15W 25 lks.

Description of corner evidence found:

None; in middle of city road  
Reset post by running lines back from in the city.



43013200020

Description of monument and accessories I established to perpetuate the original location of this corner.

1 1/4" iron pipe set at 1/4 corner

Ties:

Forest County Alu. Mon. S82W 50.11 feet  
SE cor south gate post of cemetary N55W 58.78 feet  
SW cor east gate column of cemetary N49E 41.10 feet

Dated at **Crandon**, Wis., this **2nd** day of **November**, 19 **77**

Signature **Thomas R. Arnott** Title **Surveyor** Registration No. **S-887**  
(County Surveyor, Registered Land Surveyor, or other duly authorized official)

Office of Register of Deeds, County of **Forest**, I hereby certify that the within instrument was filed in this office for record on the **3rd** day of **November**, 19 **77** at **11** o'clock **A.** M.

**Eugene Stutzman** Doc. No. **112700**  
(Register of Deeds)

By \_\_\_\_\_ Deputy