



Document Number
168198

Stock No. 26273

VOL CR PAGE N9

U.S. PUBLIC LAND SURVEY MONUMENT RECORD

(As Required by WI Adm. Code)

History of original corner establishment and subsequent restorations and descriptions of any record, monument, occupational, testimonial or other evidence considered:

1865 - James L. Nowlin, set original corner post and made the following B.T.'s:

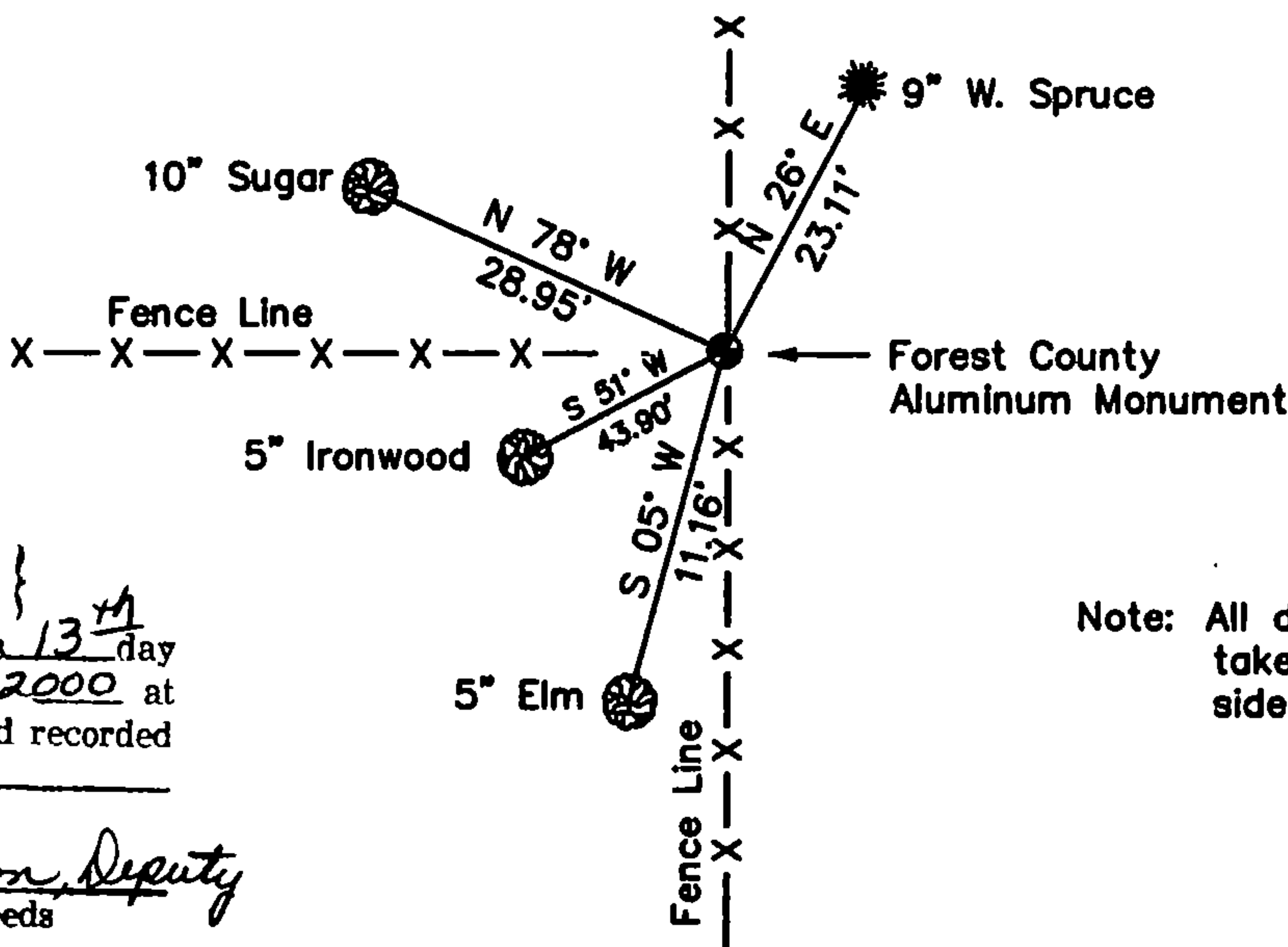
- Elm, 12°, N 30° E, 43 lks., 28.38 feet.
- Hemlock, 12°, N 32° W, 22 lks., 14.52 feet.

2000 - I found no evidence of the original corner. I found an old fence intersection running North-South & West. The fence intersection also checks very well with measurements to the corners West & South. I thus accepted the fence intersection as the best possible evidence of the corner position. For the corner I set a Forest County Aluminum Monument and made 4 new B.T.'s.

Corner was: (Check All That Apply)

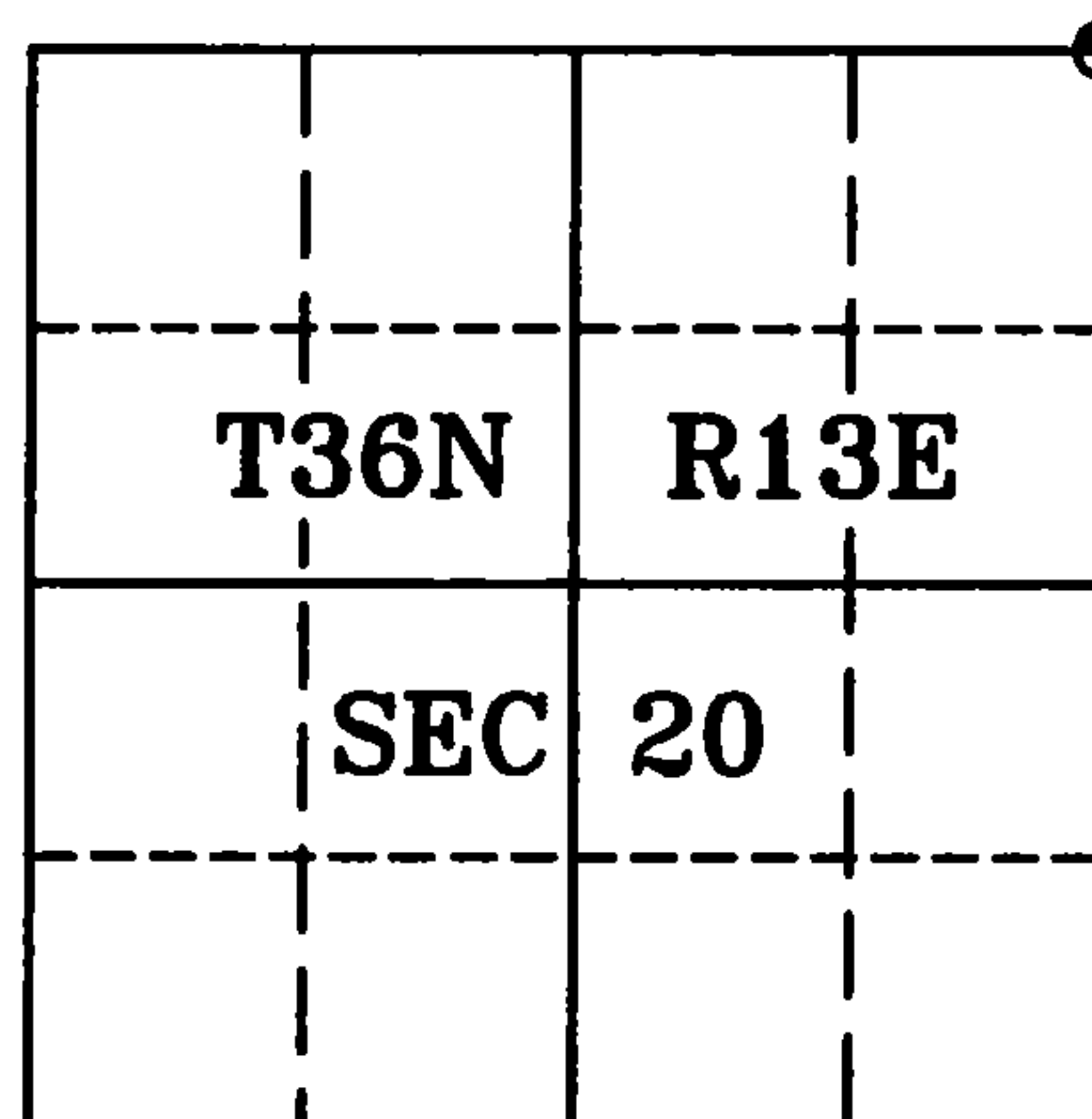
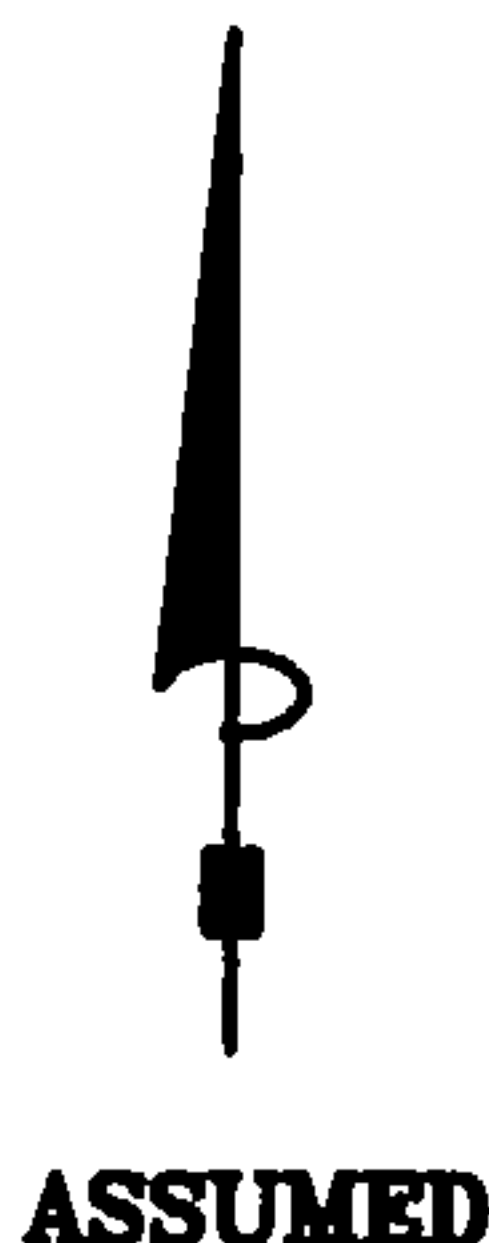
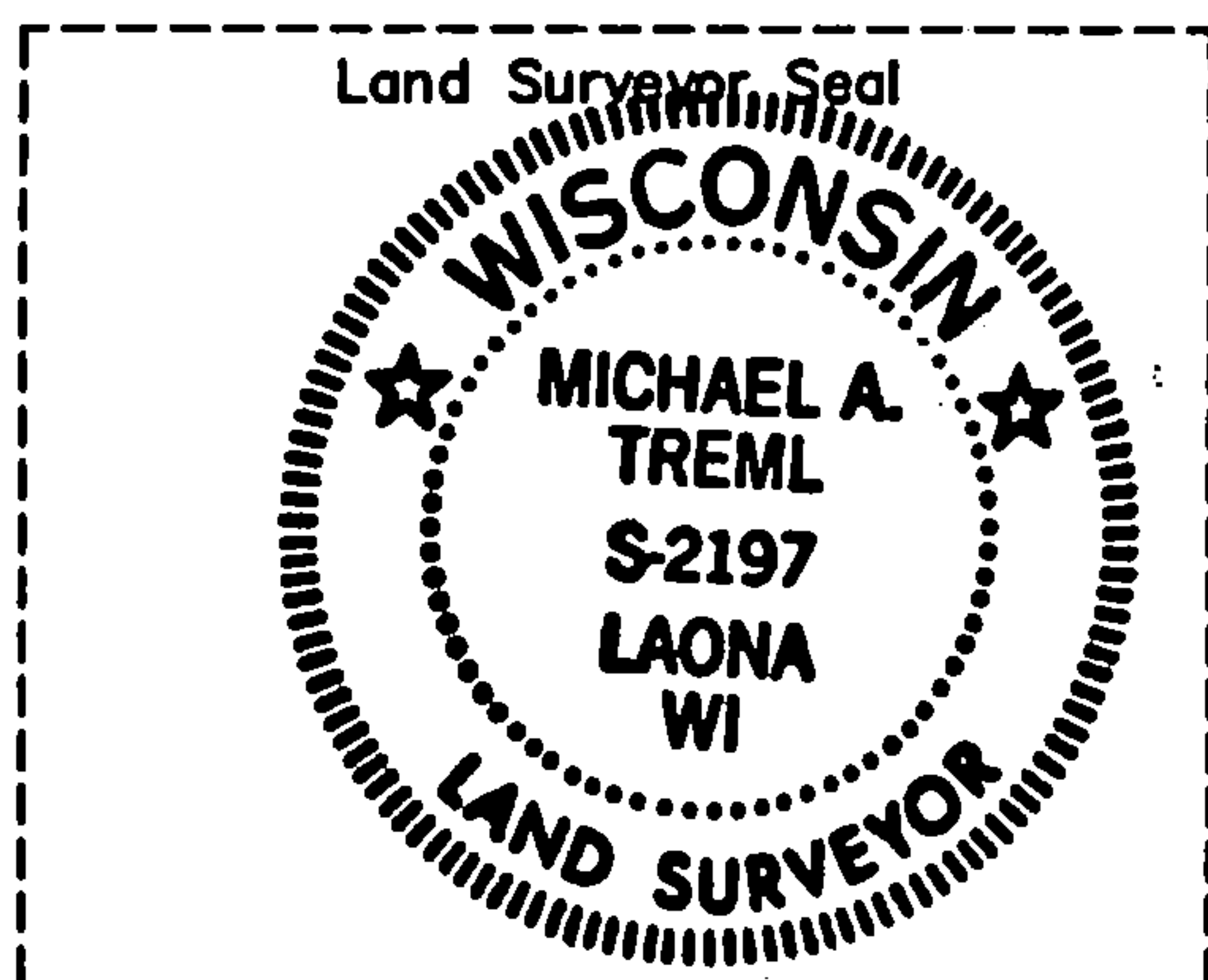
- Restored through acceptance of an obliterated evidence location.
- Restored through acceptance of a found perpetuated location.
- Considered a lost corner and reestablished through lost corner proportionate methods (include a plan view drawing showing distances and directions to other Public Land Survey Corners used for proportioning and determining the corner location).
- Restored or reestablished in a location that differs from a previous restoration or reestablishment (include a plan view drawing and indicate what was set and/or found).

Describe the monument and accessories used to perpetuate the location of this corner (include a plan view drawing and indicate what was set and/or found).



Note: All distances are taken to nail in side of tree.

REGISTER'S OFFICE }
 Forest County, Wis. }
 Received for record this 13th day
 of April A.D., 2000 at
1:15 o'clock P.M. and recorded
 in Vol. CR
 page N9
Kay Swanson, Deputy
 Register of Deeds



I, Michael A. Trembl, RLS
(type or print name) certify that the corner location shown on this record was determined by me or under my direction and control and that this U.S. Public Land Survey Monument Record is correct and complete to the best of my knowledge and belief.

Michael A. Trembl 4/1/00
Signature Date

The Northeast corner of
Section 20 T. 36 N., R. 13 E.
Forest County, WI

Index No. N9

43613170000