

CERTIFIED LAND CORNER RESTORATION

Index No. J-7

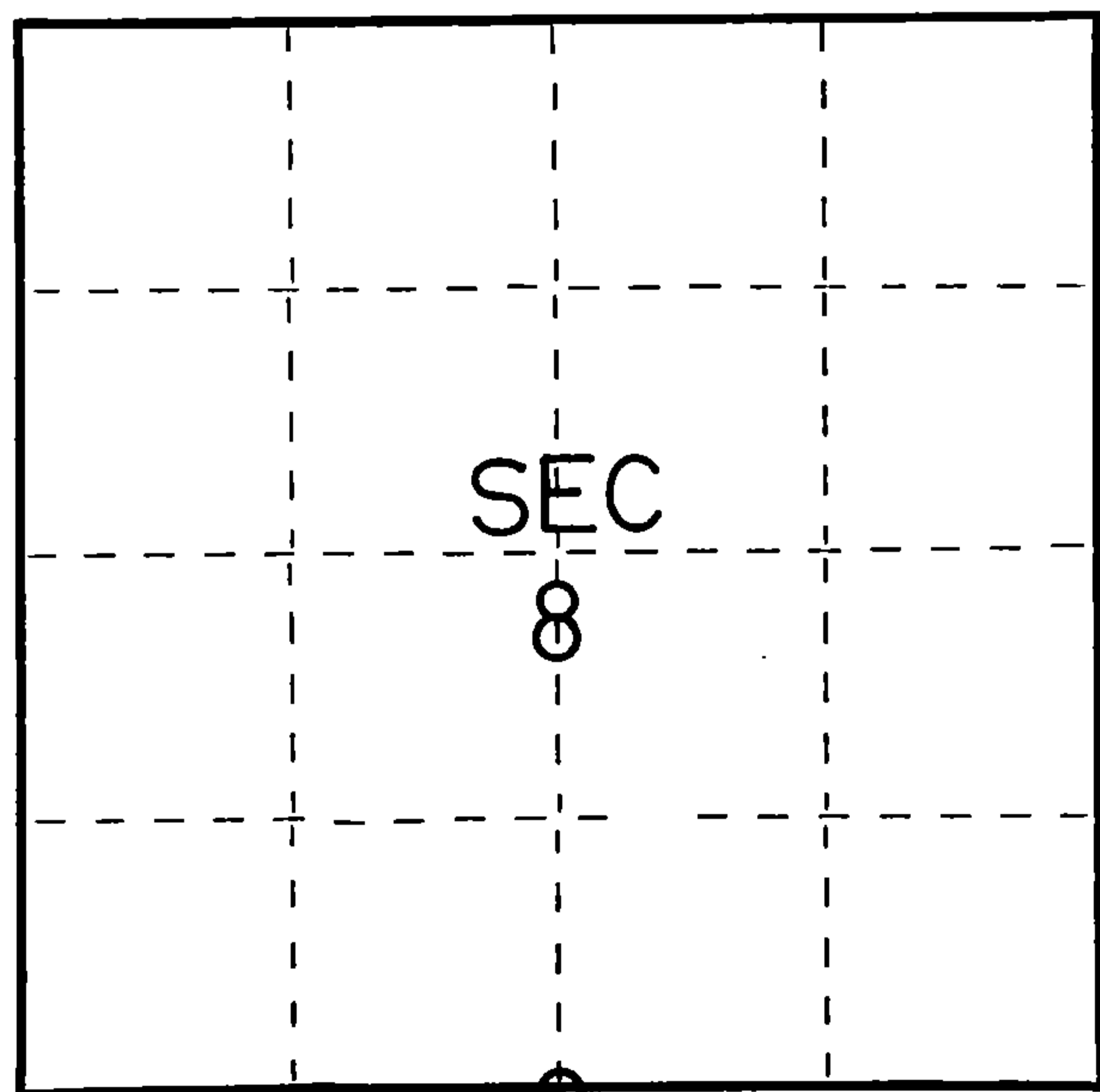
State of Wisconsin }  
County of Forest } ss.

I Thomas R. Arnott, do hereby certify that on the 5th day of January, 19 76, I found evidence of the 1/4 corner of sections 8 & 17 Township 36, North, Range 13 E, Fourth Principal Meridian, as described hereon; and that from this evidence I established a new monument and accessories as described hereon to perpetuate the original location of this corner.

Resident witnesses:

Herbert Wagoner

FORM 985 H. C. MILLER CO., MILWAUKEE



○ = Corner monument restored.

History of original corner establishment:

Original subdivision by James Nowlin June 2 - June 12, 1865

Spruce 6 South 20 Lks.  
Spruce 4 N9W 35 Lks.

Description of corner evidence found:

Wood post found



Description of monument and accessories I established to perpetuate the original location of this corner.

Replaced wood post with a new Forest County aluminum monument

Ties:

Spruce 6 N56E 22.97 feet  
Spruce 6 S39E 14.26 feet  
Spruce 6 S24W 36.32 feet

Dated at Grandon, Wis., this 9th day of January, 19 76

Signature Thomas Arnott Title Surveyor Registration No. S-887  
(County Surveyor, Registered Land Surveyor, or other duly authorized official)

Office of Register of Deeds, County of Forest, I hereby certify that the within instrument was filed in this office for record on the 9th day of January, 19 76 at 11 o'clock A. M.

Eugene Stetson Document Number 108532  
(Register of Deeds)

By \_\_\_\_\_ Deputy

43013080020

CERTIFIED LAND CORNER RESTORATION

Index No. J-7

State of Wisconsin }  
 County of Forest } ss.

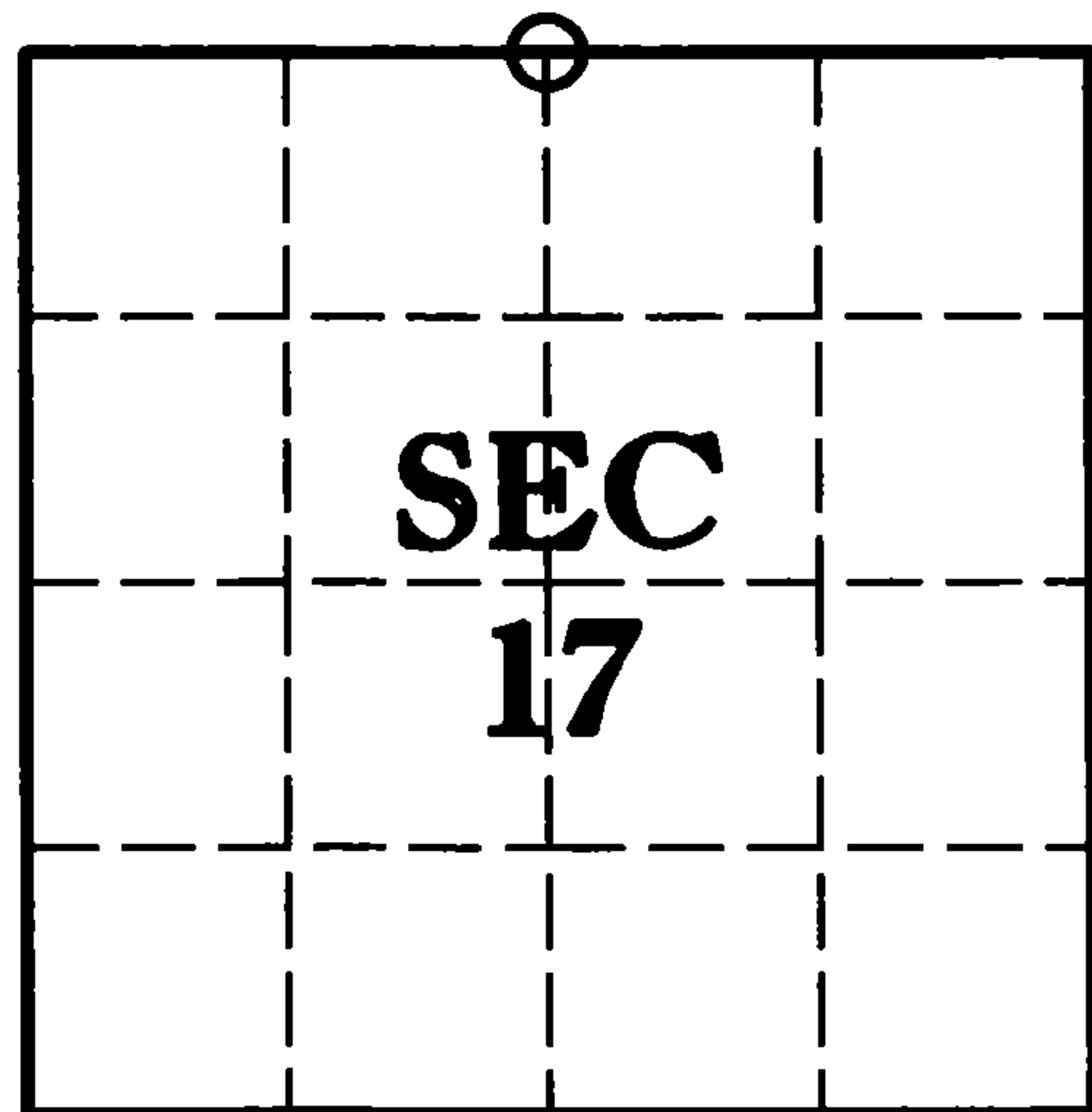
I Thomas Fogarty, do hereby certify that on the 6<sup>th</sup> day of July, 2005, I found evidence of the 1/4 corner of sections 8 & 17 Township 36, North, Range 13 E, Fourth Principle Meridian, as described hereon; and that from this evidence I established a new monument and accessories as described hereon to perpetuate the original location of this corner.

Resident witnesses:

Kory Rentmeester, Brad Nelson

Forest County Coordinates:

N: 584420.241 (feet)  
E: 838368.992 (feet)



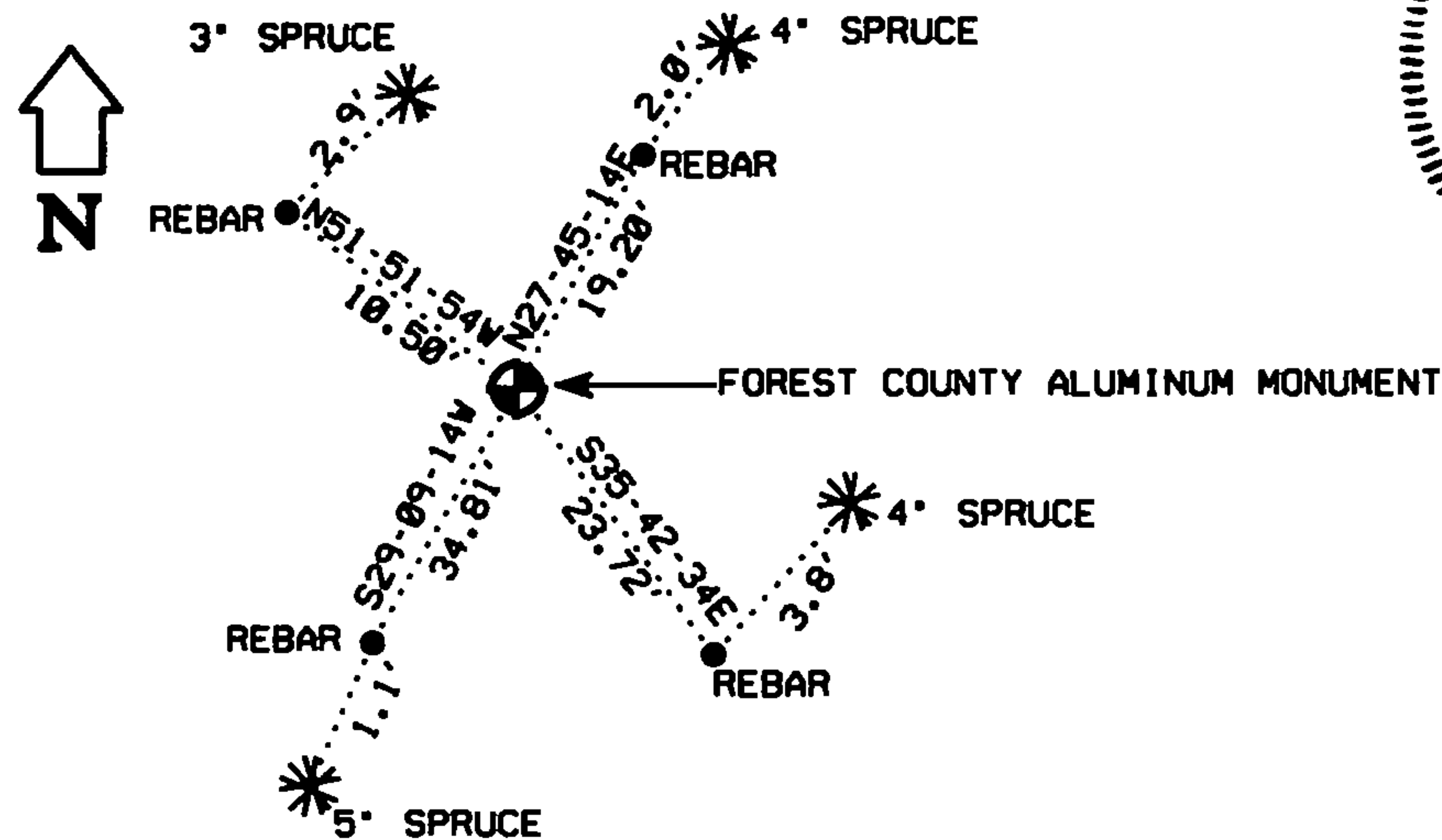
○ = Corner monument restored.

History of original corner establishment:

1865 - James L. Nowlin set original corner post and made the following B.T.'s:  
 Spruce 6 South 20 Lks.  
 Spruce 4 N9W 35 Lks.

1976 - Thomas R. Amott found wood post and replaced it with a new Forest County aluminum monument. He set the following ties:  
 Spruce 6 N56E 22.97 feet  
 Spruce 6 S24W 36.32 feet  
 Spruce 6 S39E 14.26 feet

2005 - I found a Forest County aluminum monument and set the following ties:  
 Set the following ties:  
 Rebar 5/8" N27°45'14"E 19.20 feet  
 Rebar 5/8" N51°51'54"W 10.50 feet  
 Rebar 5/8" S35°42'34"E 23.72 feet  
 Rebar 5/8" S29°09'14"W 34.81 feet



WISCONSIN  
 THOMAS R. FOGARTY  
 S-1752  
 Green Bay, Wis.  
 LAND SURVEYOR  
*Thomas R. Fogarty*  
 11/17/05

Dated at Crandon, Wis., this 17<sup>th</sup> day of November, 2005  
 Signature Thomas R. Fogarty Title Registered Land Surveyor Registration No. S-1752  
 (County Surveyor/Registered Land Surveyor, or other duly authorized official)

Office of Register of Deeds, County of Forest, I hereby certify that the within instrument was filed in this office for record on the 18<sup>th</sup> day of November, 2005 at 2:40 o'clock P M.

Kay Swanson, Deputy  
 (Register of Deeds)

REGISTER'S OFFICE {  
 Forest County, Wis.  
 Received for record this 18<sup>th</sup> day  
 of November A.D., 2005 at  
2:40 o'clock P M. and recorded  
 in Volcaner Restoration  
 page J-7  
Kay Swanson, Deputy  
 Register of Deeds

Document Number  
 189293

43613080020