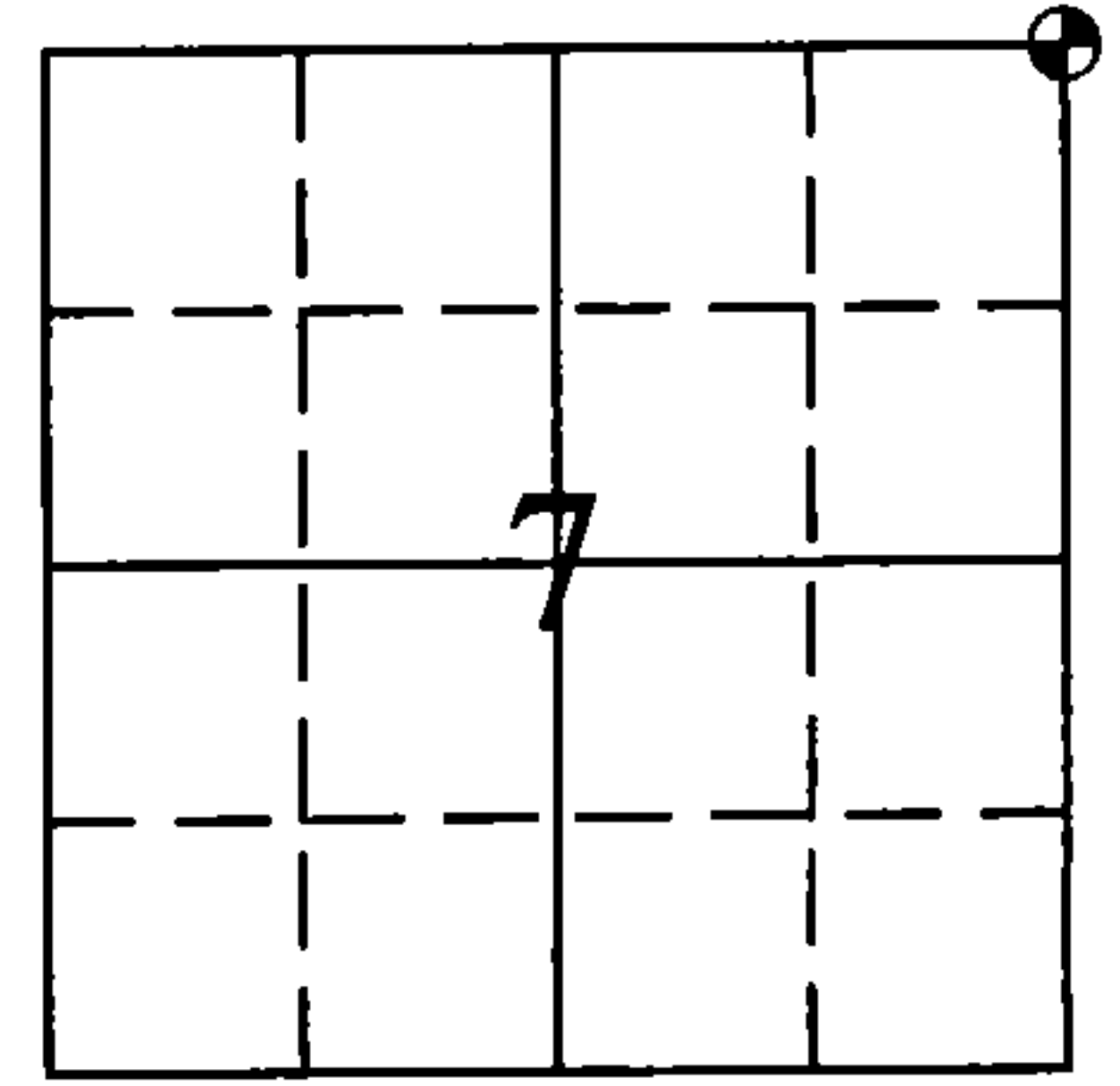


REGISTER'S OFFICE
Forest County, Wis.
Received for record this 24th day
of July A.D., 2015 at
4:15 o'clock P.M. and recorded
in Vol. Corner Restoration
page E-5
Erik L. Deaton Deputy
Register of Deeds

U.S. PUBLIC LAND SURVEY MONUMENTATION RECORD

(AS REQUIRED BY S. A-E 7.08, WI ADM. CODE)

CORNER: NORTHEAST INDEX NUMBER: E-5
SECTION: 7 TOWNSHIP: T36N RANGE: R13E
TOWN/CITY/VILLAGE: TOWN OF LINCOLN
COUNTY: FOREST STATE: WISCONSIN



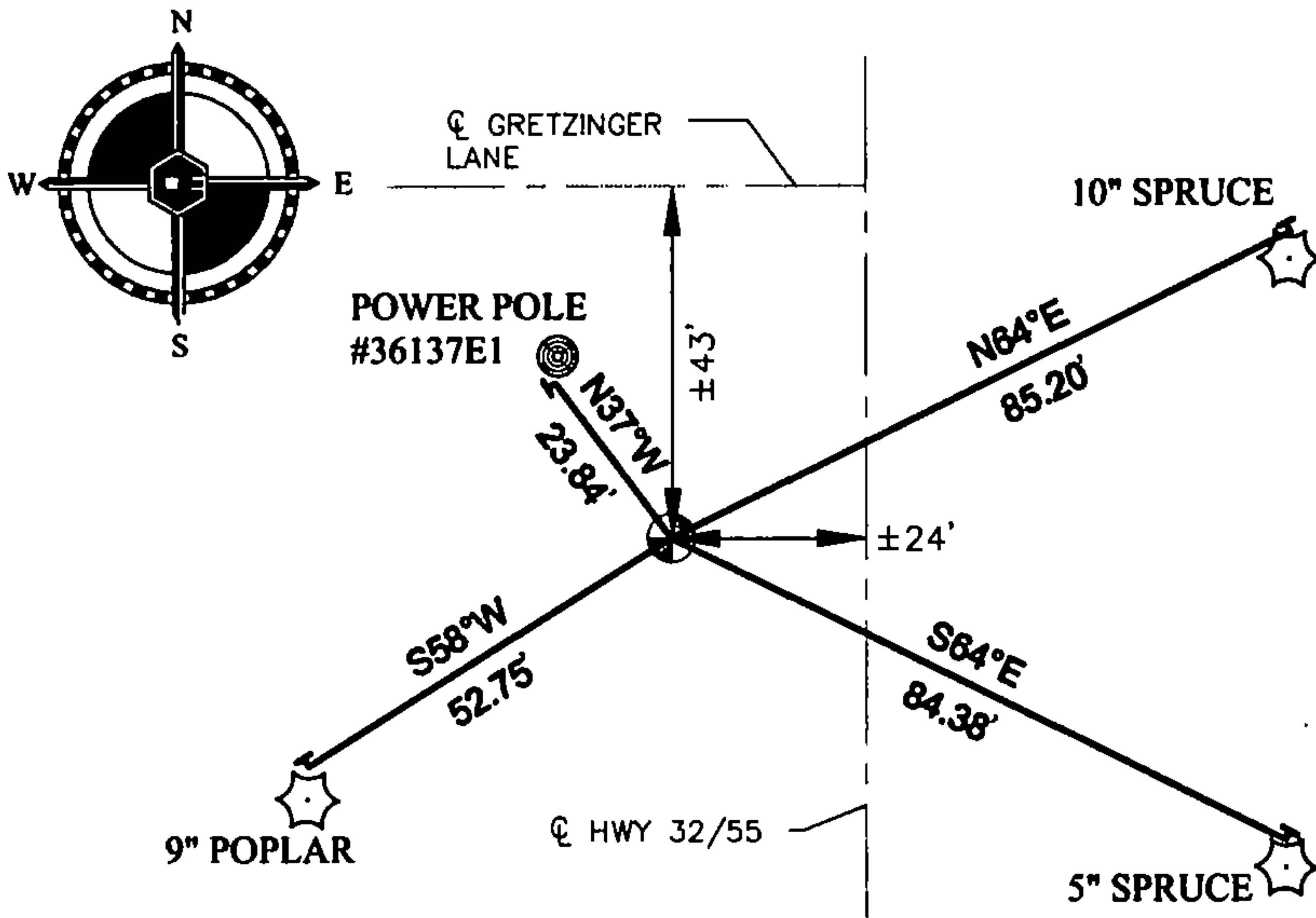
⊙ = CORNER LOCATION

HISTORY OF ORIGINAL CORNER ESTABLISHMENT AND SUBSEQUENT RESTORATIONS AND DESCRIPTION OF ANY RECORD, MONUMENT, OCCUPATIONAL, TESTIMONIAL, OR OTHER EVIDENCE CONSIDERED:

1865: JAMES L. NOWLIN, SET CORNER POST
8" BIRCH S30°E 100 LINKS
12" TAMARACK N29°W NO MEAS. LISTED

CORNER WAS: (CHECK ALL THAT APPLY)

- RESTORED THROUGH ACCEPTANCE OF AN OBLITERATED LOCATION
- RESTORED THROUGH ACCEPTANCE OF A FOUND PERPETUATED LOCATION
- RESTORED OR REESTABLISHED IN A LOCATION THAT DIFFERS FROM A PREVIOUS RESTORATION OR REESTABLISHMENT (INCLUDE A PLAN VIEW DRAWING AND INDICATE WHAT WAS SET AND/OR FOUND)
- CONSIDERED A LOST CORNER AND REESTABLISHED THROUGH LOST CORNER PROPORTIONATE METHODS (INCLUDE A PLAN VIEW DRAWING SHOWING DISTANCES AND DIRECTIONS TO OTHER PUBLIC LAND SURVEY CORNERS USED FOR PROPORTIONING AND DETERMINING THE CORNER LOCATION)



LEGEND

- ⊙ = SET 1.25" I.P. W/CAP
- ⋄ = SET DOUBLE HEADED NAIL

SCALE: 1" = 40'

NOTE: SEE DETAIL ON PAGE 2 FOR PROPORTIONING AND METHODS USED TO DETERMINE CORNER LOCATION.

DESCRIBE THE MONUMENT AND ACCESSORIES USED TO PERPETUATE THE LOCATION OF THIS CORNER.

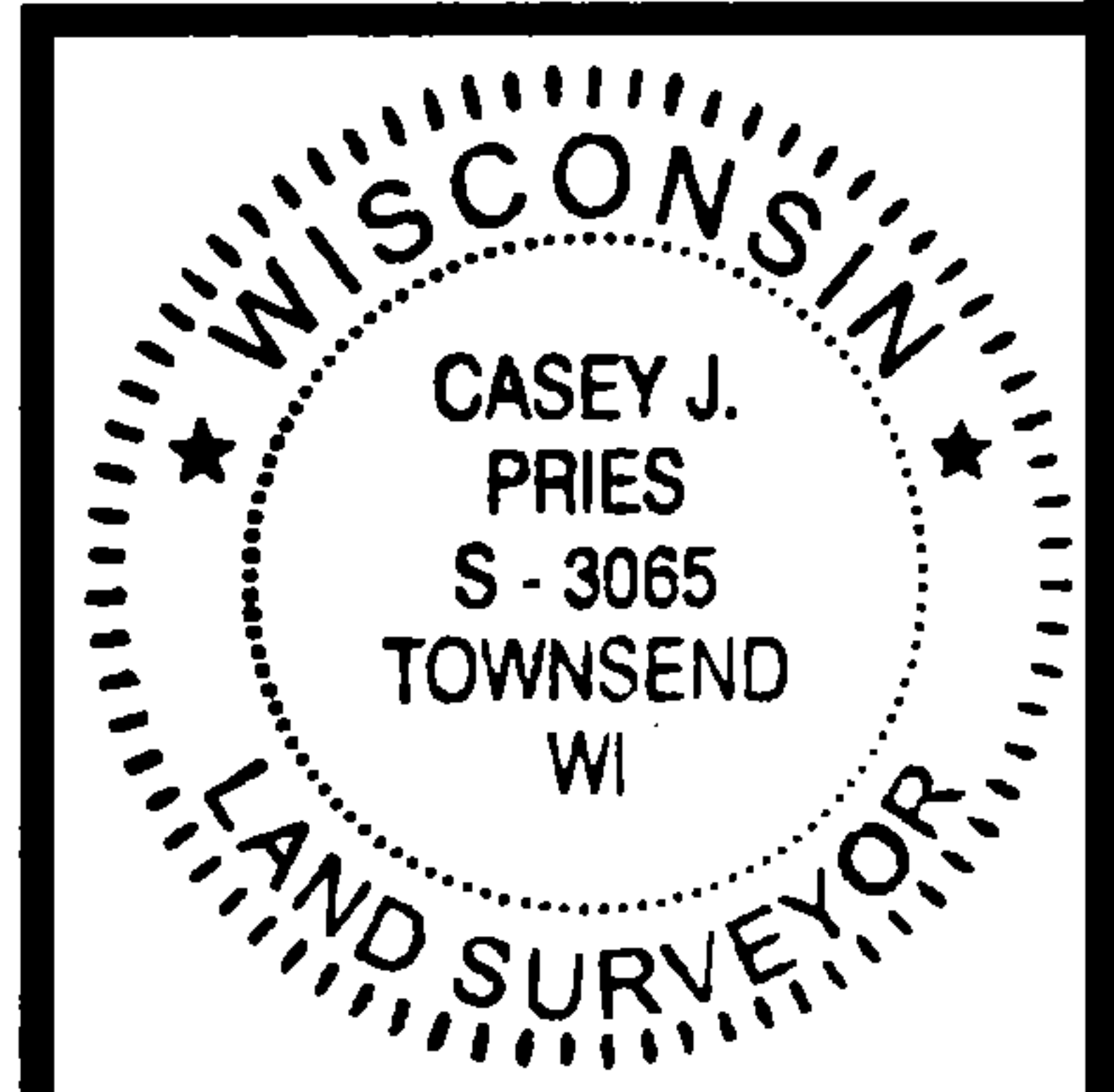
(INCLUDE A PLAN VIEW DRAWING AND INDICATE WHAT WAS SET AND/OR FOUND)

CASEY J. PRIES PLS# S-3065, SET 1.25" x 24" I.P. WITH PLASTIC PRIES PLS-3065 CAP USING DOUBLE PROPORTIONATE METHODS. CORNER IS LOCATED ± 43 FEET SOUTH OF CENTERLINE OF GRETZINGER LANE, AND ALSO ± 24 FEET WEST OF CENTERLINE OF HWY 32/55.

SET THE FOLLOWING WITNESSES:

10" SPRUCE	N64°E	85.20'
5" SPRUCE	S64°E	84.38'
9" POPLAR	S58°W	52.75'
POWER POLE #36137E1	N37°W	23.84'

NOTE: ALL WITNESS TREES HAVE CHEST AND STUMP BLAZES WITH DOUBLE HEADED NAIL AT BASE. DISTANCES ARE MEASURED TO DOUBLE HEADED NAIL.



SIGNATURE: Casey Pries

DATE: 7-24-15

Index No. E-5

I, CASEY J. PRIES PLS S-3065
CERTIFY THAT THE CORNER LOCATION SHOWN ON THIS ABOVE RECORD WAS DETERMINED BY ME OR UNDER MY DIRECTION AND CONTROL AND THAT THIS U.S. PUBLIC LAND SURVEY MONUMENT RECORD IS CORRECT AND COMPLETE TO THE BEST OF MY KNOWLEDGE AND BELIEF.



COLEMAN ENGINEERING COMPANY
635 CIRCLE DRIVE, IRON MOUNTAIN, MI 49801
PHONE: (906) 774-3440 FAX: (906) 774-7776

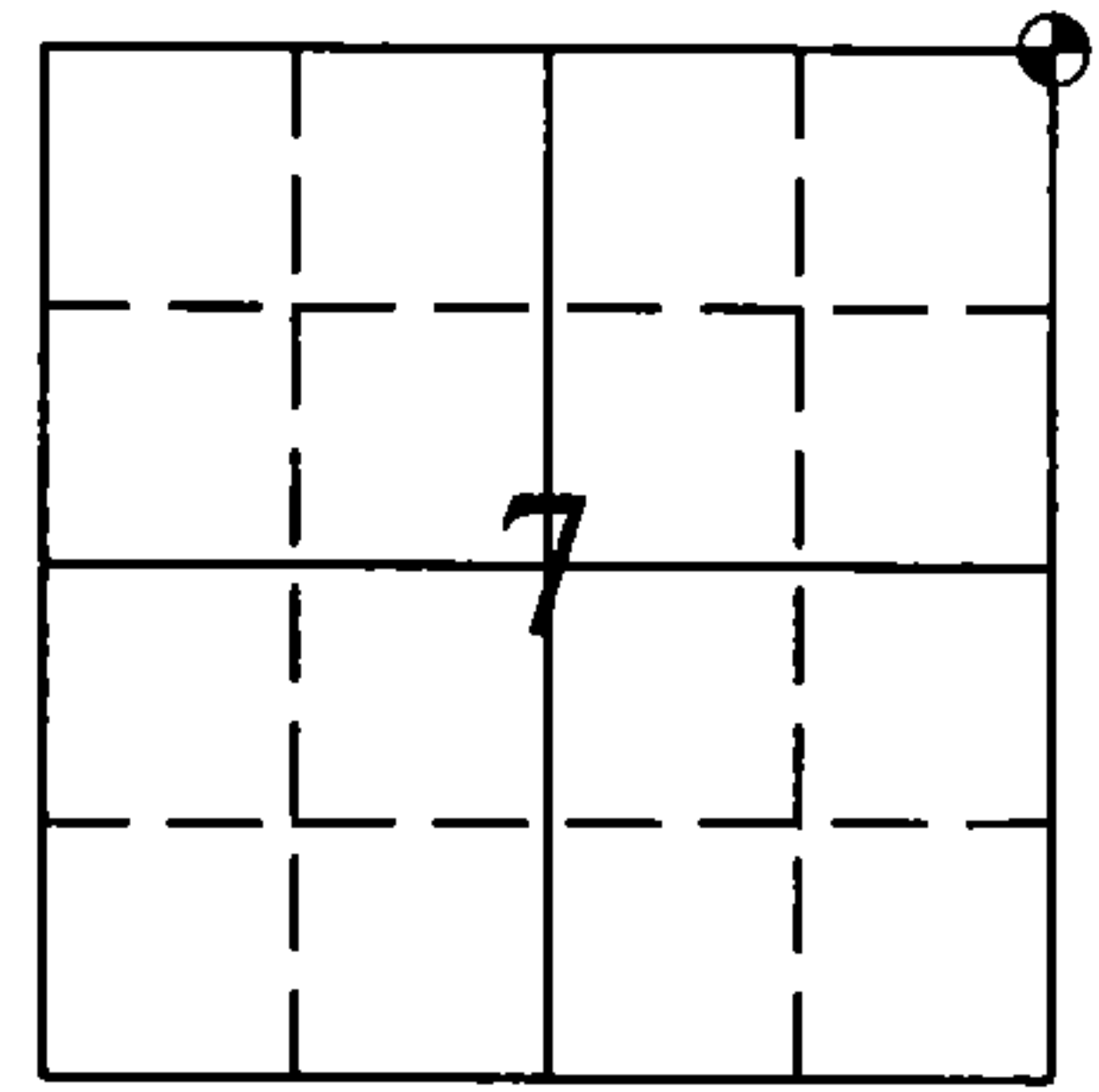
DRAWN: MJT	FB 430, PG:72	DATE: 7/24/15	JOB NO. 15127-B
---------------	---------------	---------------	--------------------

43613060000

U.S. PUBLIC LAND SURVEY MONUMENTATION RECORD

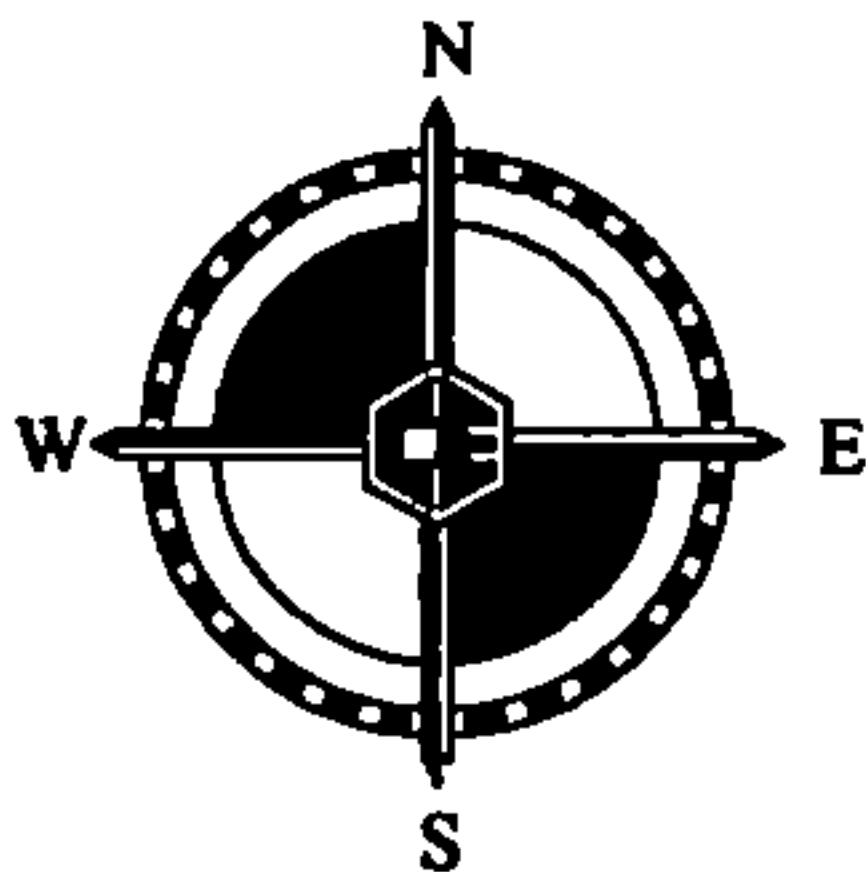
(AS REQUIRED BY S. A-E 7.08, WI ADM. CODE)

CORNER: NORTHEAST INDEX NUMBER: E-5
 SECTION: 7 TOWNSHIP: T36N RANGE: R13E
 TOWN/CITY/VILLAGE: TOWN OF LINCOLN
 COUNTY: FOREST STATE: WISCONSIN

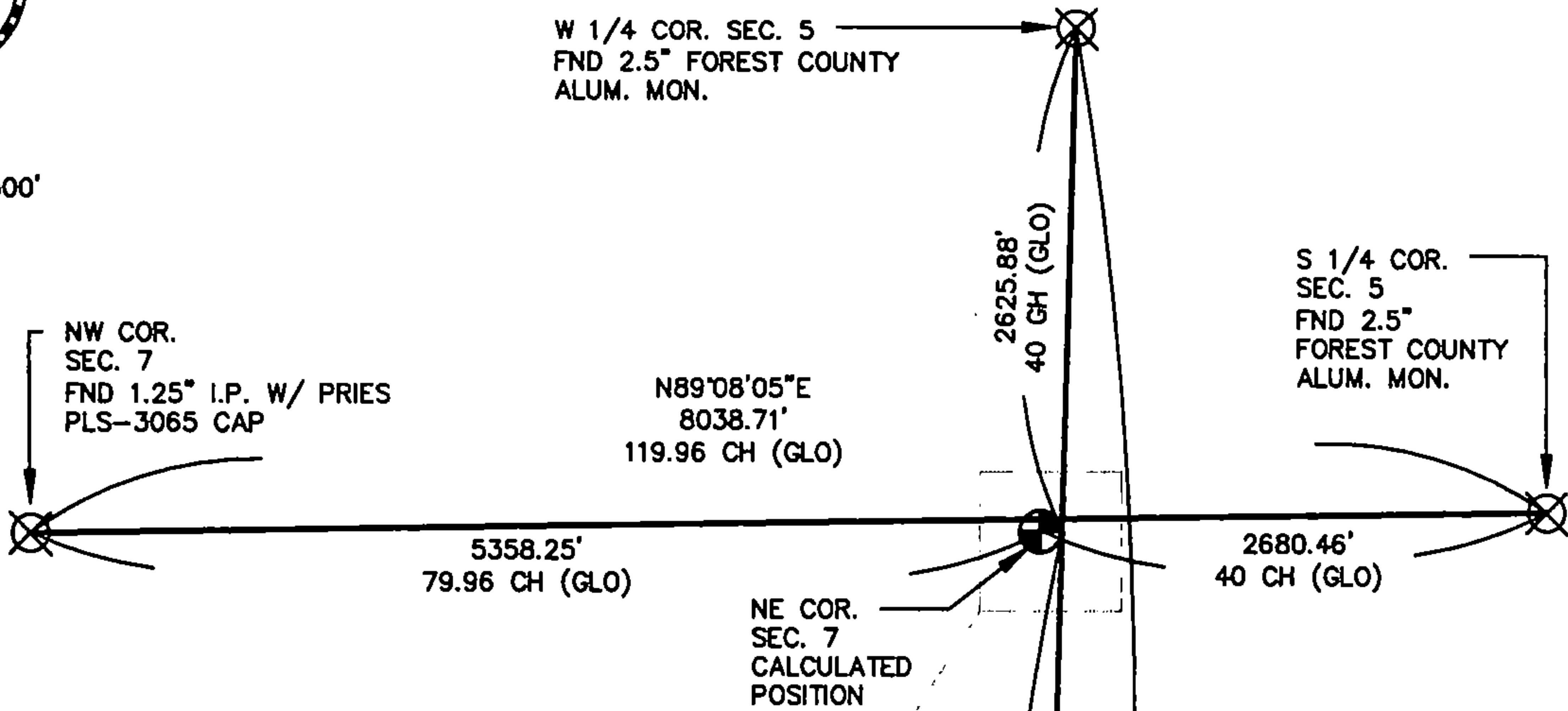


⊙ = CORNER LOCATION

PROPORTIONING: PLAN VIEW

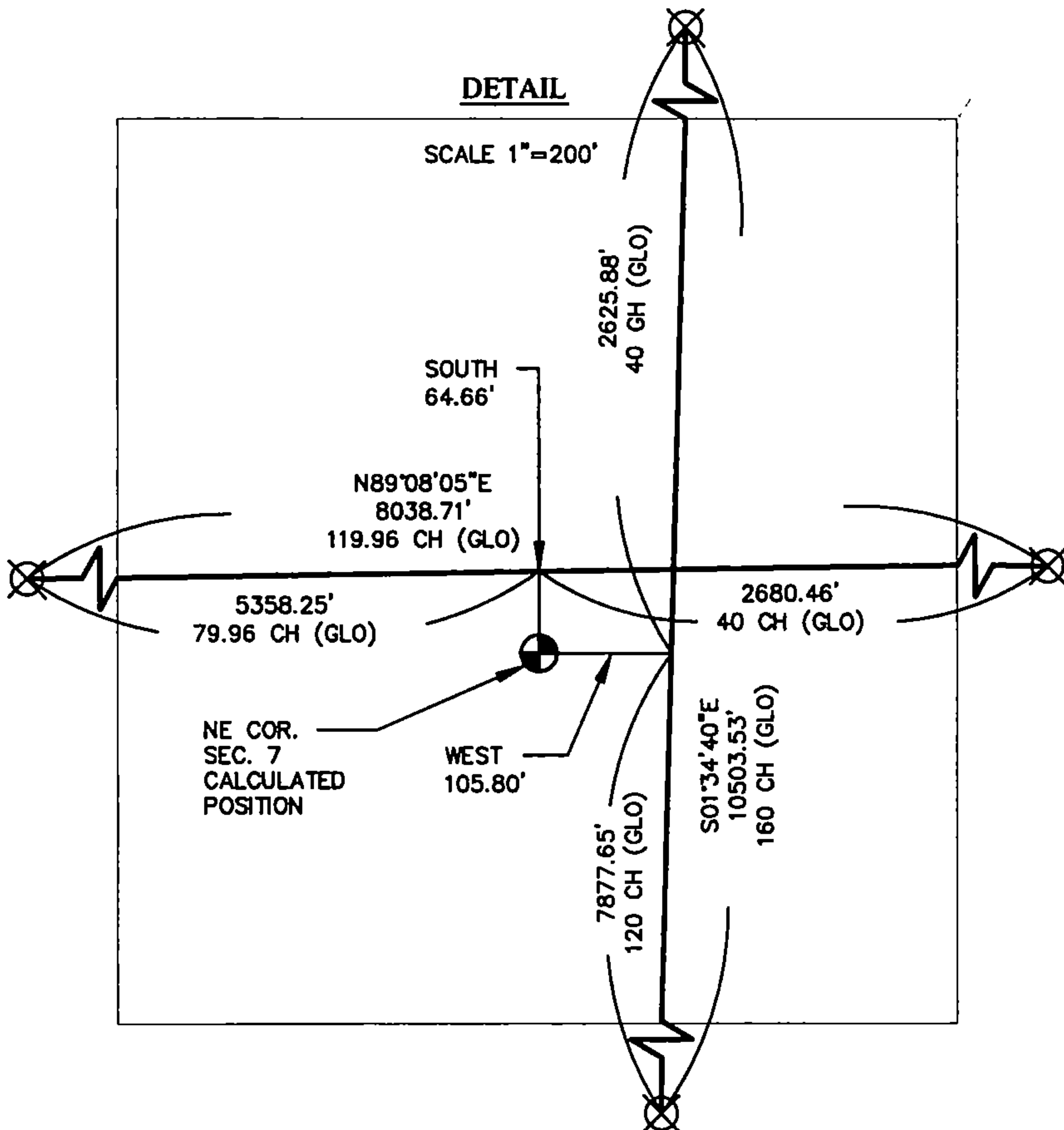


SCALE 1" = 1500'



DETAIL

SCALE 1"=200'



Page 2 of 2

SIGNATURE:

DATE:

Index No. E-5

I, CASEY J. PRIES PLS S-3065
 CERTIFY THAT THE CORNER LOCATION SHOWN ON THIS ABOVE RECORD
 WAS DETERMINED BY ME OR UNDER MY DIRECTION AND CONTROL AND
 THAT THIS U.S. PUBLIC LAND SURVEY MONUMENTATION RECORD IS CORRECT
 AND COMPLETE TO THE BEST OF MY KNOWLEDGE AND BELIEF.



COLEMAN ENGINEERING COMPANY
 635 CIRCLE DRIVE, IRON MOUNTAIN, MI 49801
 PHONE: (906) 774-3440 FAX: (906) 774-7776

DRAWN:
MJT

FB 430, PG:72

DATE: 7/24/15

JOB NO.
15127-B