

**ORIGINAL ON FILE IN CO CLERK'S OFFICE
COPY HERE FOR REFERENCE**

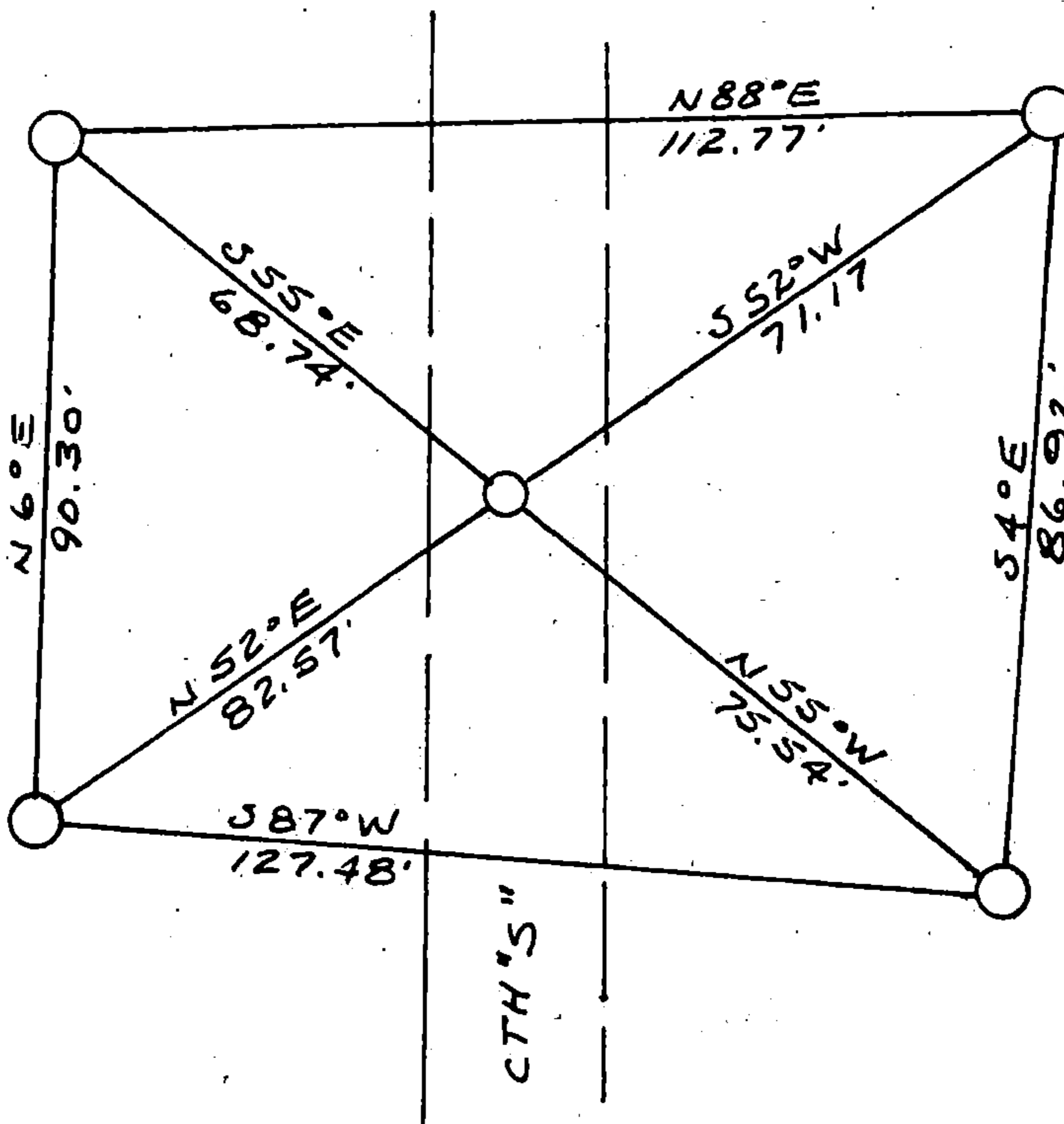
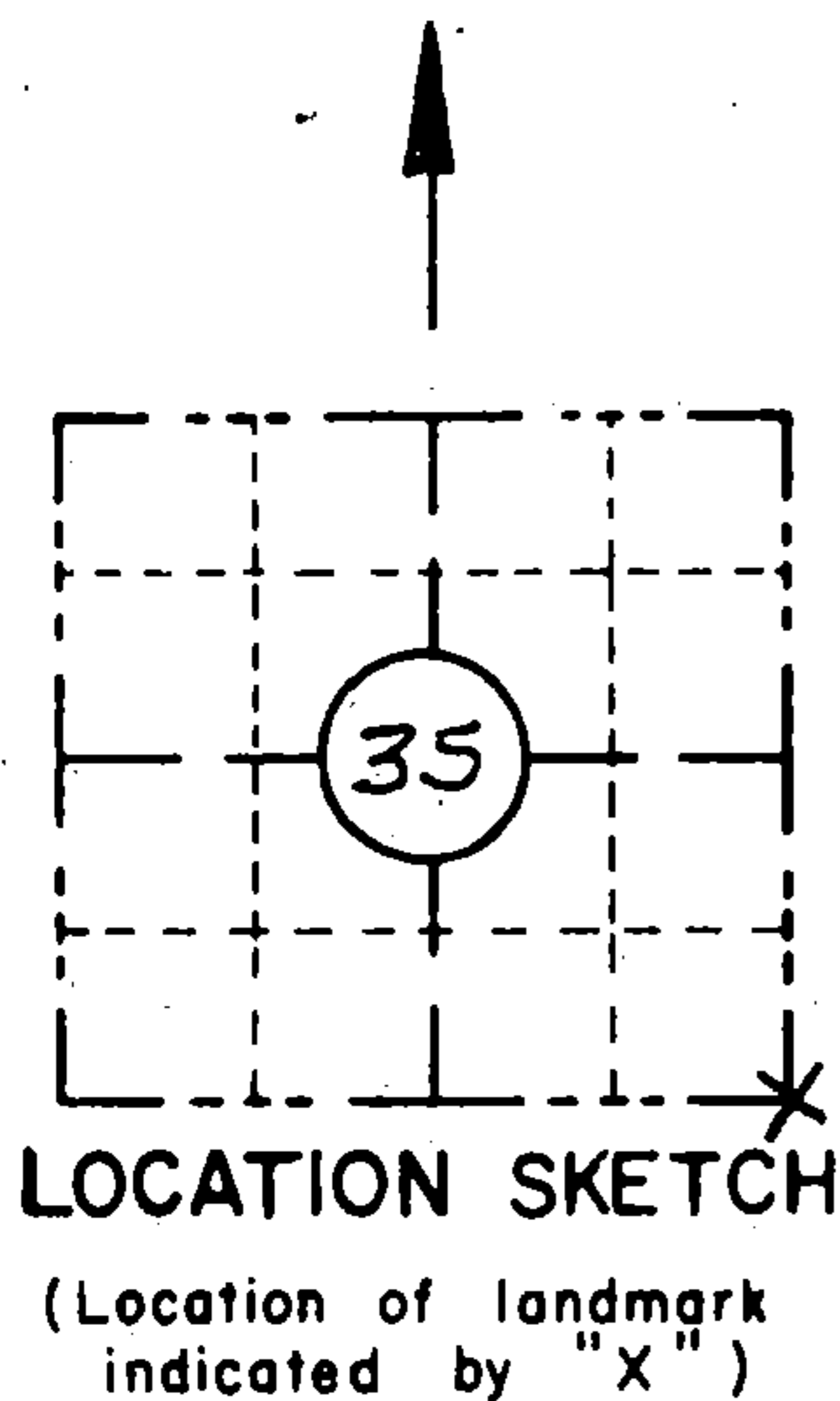
**RECORD AND CERTIFICATION OF U.S.
PUBLIC LAND SURVEY CONTROL STATION**

State of Wisconsin / Department of Transportation

E-D-716-72

District 7	Project I. D. 9339-06-70	Located by R. B. JOHNSON - SURVEY CREW CHIEF		
Corner S.E. COR. 35 SECTION	Township 36 N	Range (E,W) 12 E.	County FOREST	
Wisconsin Coordinates CORNER	East (X) NA	North (Y) NA	Elevation (Z)	Zone
Control Station Name	East (X)	North (Y)	Elevation (Z)	Zone
Horizontal — NORTH AMERICAN, 1927		CONTROL DATUM Vertical — MEAN SEA LEVEL, 1929 ADJUSTMENT		
Horizontal — _____ Order		SURVEY CONTROL Vertical — _____ Order		

SKETCH



I hereby certify that on the 4TH day of MAY 1993, that I did locate the above corner which was evidenced by R. R. SPIKE

_____ ; I further certify that to perpetuate the location of such corner I did, at the exact location thereof, place a permanent marker consisting of NA

_____ ; I further certify that I did establish 4 references or witness monuments consisting of 5/8" x 24" RE-BARS WITH RED PLASTIC WDOT CAPS

_____ located as shown above:

SEAL

Signature Registered Land Surveyor	Registration No. S--	Title
------------------------------------	--------------------------------	-------

CORNER
S.E. COR.
SECTION
35
TOWN
36 N
RANGE
12 E

4361235 0000

CERTIFIED LAND CORNER RESTORATION

Index No. A-21

State of Wisconsin }
County of Forest } ss.

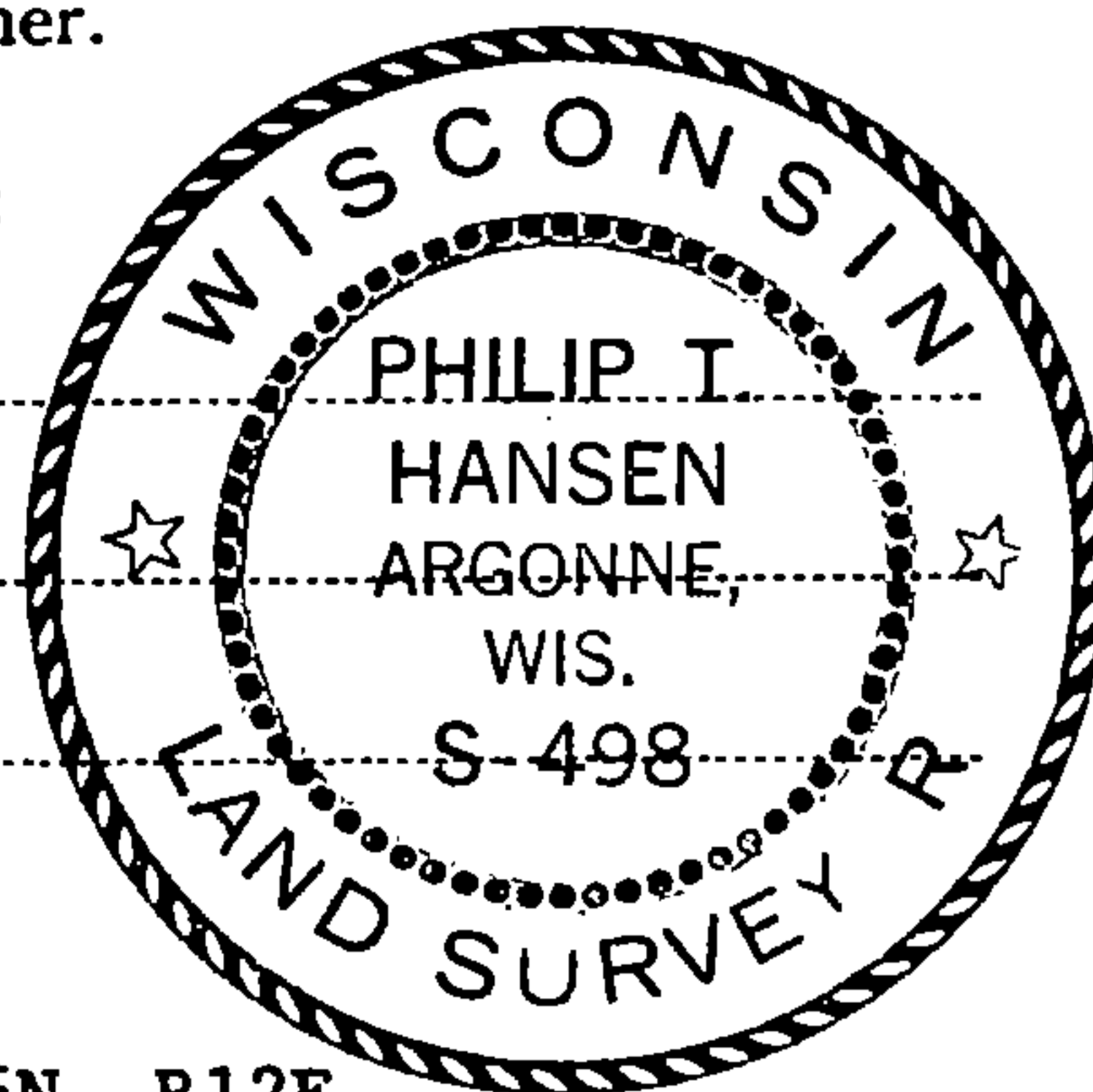
I Philip T. Hansen, do hereby certify that on the 29th day of July, 1977, I ~~restored~~ established ~~evidence~~ of the Section corner of Sec. 35, 36, 2, 1 Township 36 - 35, North, Range 12 East, Fourth Principal Meridian, as described hereon; and that from this evidence I established a new monument and accessories as described hereon to perpetuate the original location of this corner.

Resident witnesses:

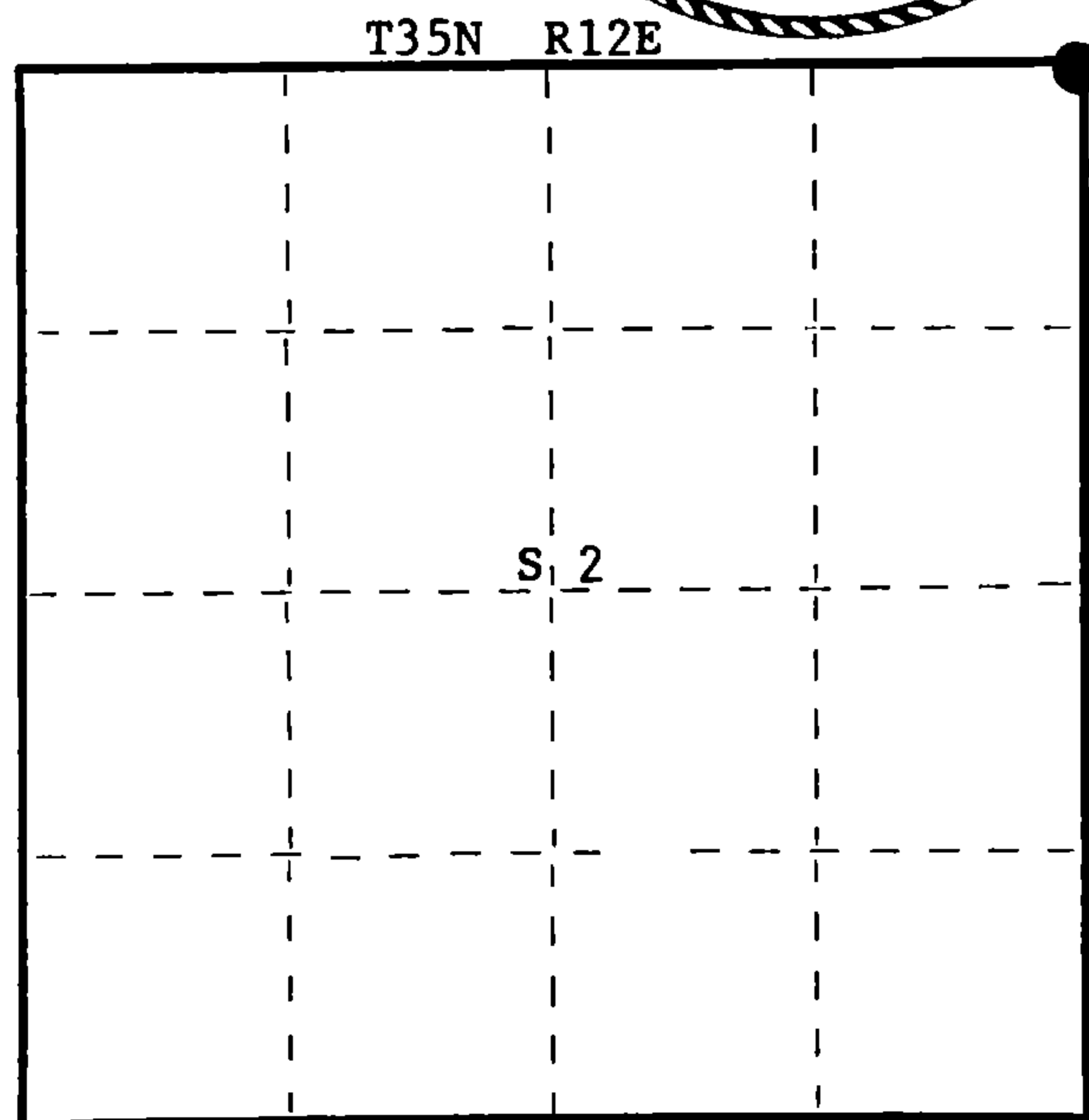
Glen Barker

Jim Claflin

Herb Wagoner



FORM 985 H. C. MILLER CO., MILWAUKEE



○ = Corner monument restored.

History of original corner establishment:

Original Corner established by A. Curtiss, Deputy Surveyor, in 1858, from which ironwood 10" bears N62°E, 36 links; Sugar 12" N62°W, 24 links; yellow birch 12" S20°W, 39 links; sugar maple 15" S25°E, 60 links.

No records of any subsequent survey.

Description of corner evidence found:

Corner established by accepting the intersection of centerline of County Trunk S, Sipple Road to west and Town road east for corner.

Description of monument and accessories I established to perpetuate the original location of this corner.

Set a railroad spike at the intersection for true corner.
Set a 2½" Berntsen A-1 Federal Monument for witness corner S45°E, 90 links, stamped: Monument projects 2' above ground.
Marked BTs - Sugar 10" N70°W, 153.3 links.
Sugar 7" SE, 171.8 links
Sugar 6" S66°W, 102.9 links.
Sign post, County S & Sipple Road N54°W, 48.5 links.
Measurements made from true corner.

T36N R12E
Sec. $\frac{35}{2} + \frac{36}{1}$ W.C.
T35N R12E
S498
N45°W 90 lks. to Cor.

43612350000

Dated at Rhineland, Wis., this 2nd day of August, 1977

Signature Philip T. Hansen Title Registered Land Surveyor Registration No. S-498
(County Surveyor, Registered Land Surveyor, or other duly authorized official)

Office of Register of Deeds, County of Forest, I hereby certify that the within instrument was filed in this office for record on the 22nd day of AUGUST, 1977.
at 3:30 o'clock P. M.

Eugene Stutzman
(Register of Deeds)

DOCUMENT NUMBER **112168**

By _____ Deputy