

Document Number

186298

REGISTER'S OFFICE }
Forest County, Wis. }
Received for record this 14th day
of January A.D., 2005 at
2:45 o'clock P.M. and recorded
in Vol. Corner Restoration
page V-23.

Kay Swanson Deputy
Register of Deeds

U.S. PUBLIC LAND SURVEY MONUMENT RECORD

(As Required by WI Adm. Code)

History of original corner establishment and subsequent restorations and descriptions of any record, monument, occupational, testimonial or other evidence considered:

1859 - William E. Daugherty, set quarter corner section post and made the following B.T.'s:
Birch, 10", N 44° W, 23 lks., 15.18 feet.
Sugar, 6", S 26° E, 34 lks., 22.44 feet.

2003 - I found no evidence of the original corner or accessories.
I found a 1" Iron Pipe in centerline of asphalt road running east and west.
Iron pipe had been accepted and used by local surveyors over the years as the quarter corner.
Therefore I accept the iron pipe as the best possible evidence of the quarter corner position.

Corner was: (Check All That Apply)

- Restored through acceptance of an obliterated evidence location.
- Restored through acceptance of a found perpetuated location.
- Considered a lost corner and reestablished through lost corner proportionate methods (include a plan view drawing showing distances and directions to other Public Land Survey Corners used for proportioning and determining the corner location).
- Restored or reestablished in a location that differs from a previous restoration or reestablishment (include a plan view drawing and indicate what was set and/or found).

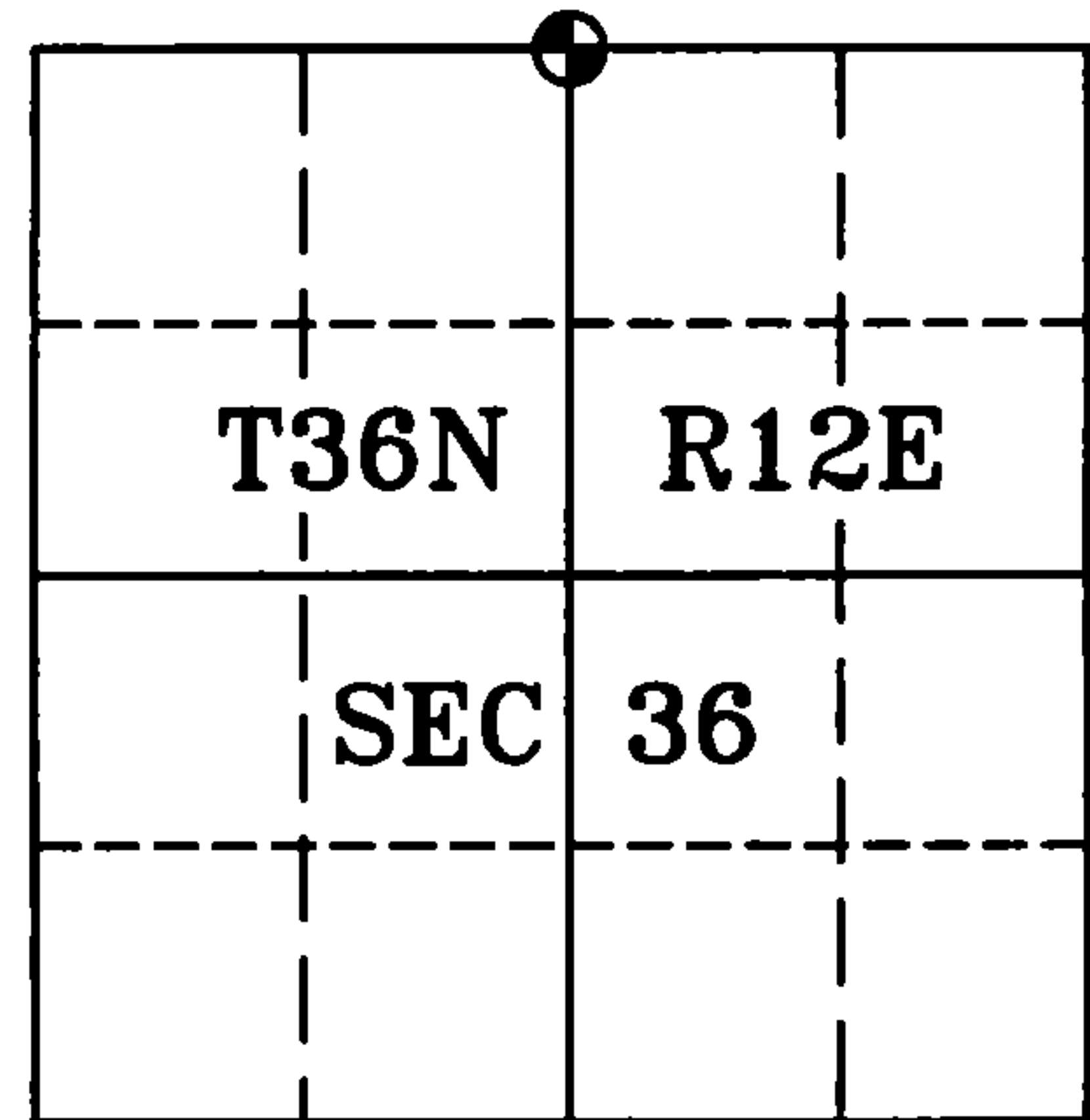
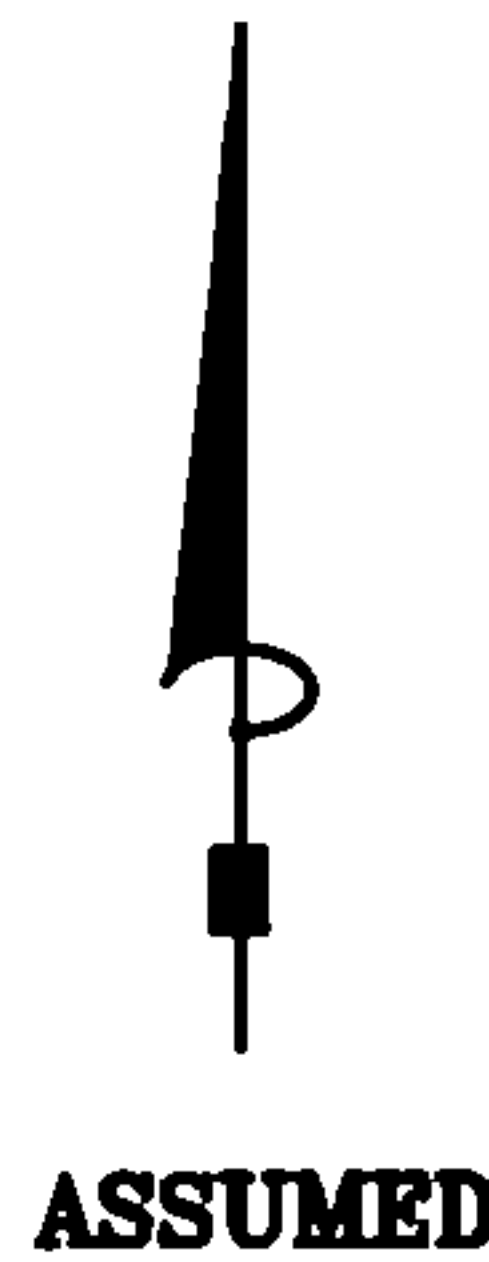
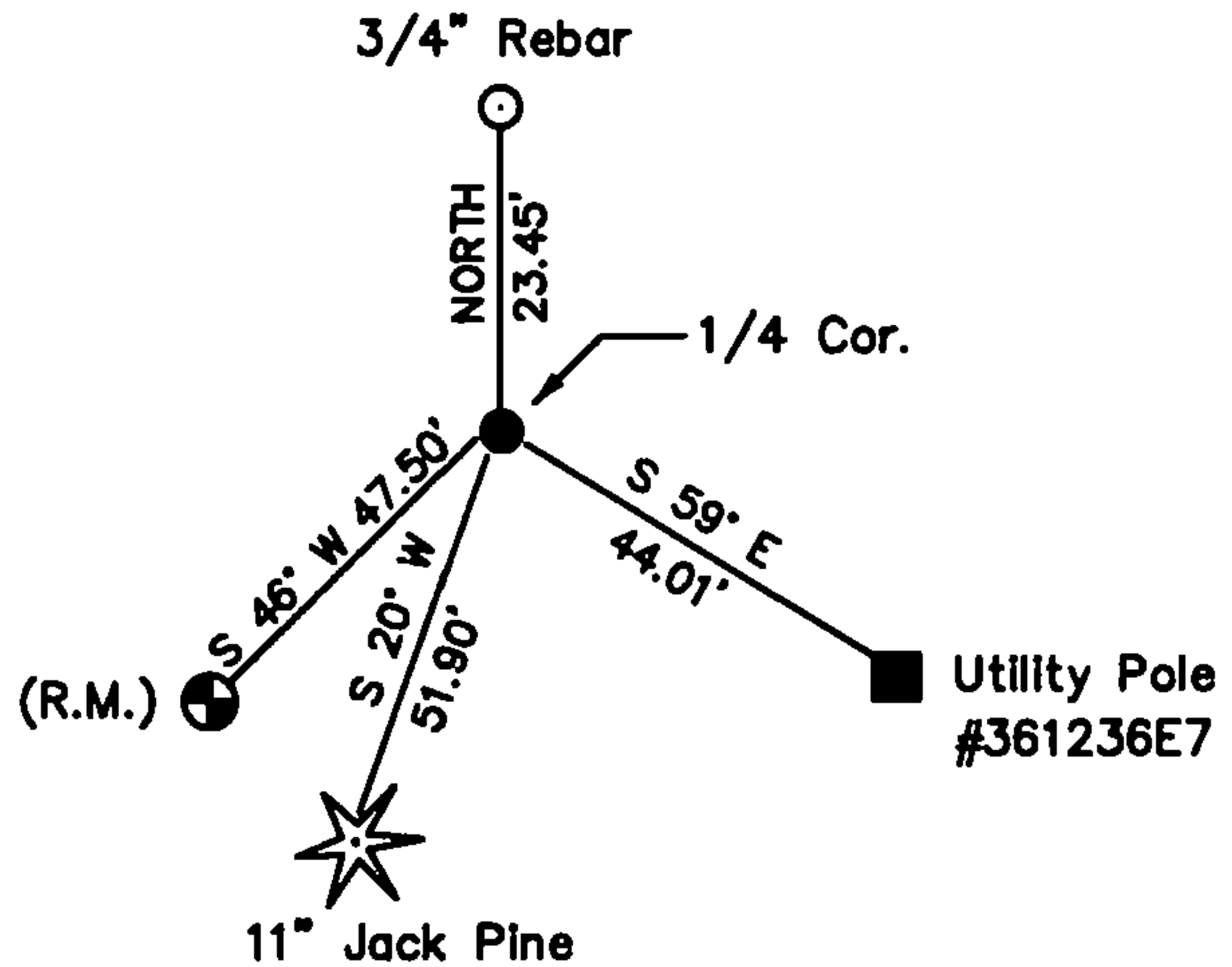
Describe the monument and accessories used to perpetuate the location of this corner (include a plan view drawing and indicate what was set and/or found).

Sketch Not To Scale

LEGEND:

- Forest County Aluminum Pipe Monument Set (Ref. Mon.)
- 1" Iron Pipe Found

Note: All distances are taken to nail in side of tree or Pole.



I, Michael A. Tremi, RLS
(type or print name) certify that the corner location shown on this record was determined by me or under my direction and control and that this U.S. Public Land Survey Monument Record is correct and complete to the best of my knowledge and belief.

Michael A Tremi 1/14/05
Signature Date

The North Quarter corner of
Section 36 T. 36 N., R. 12 E.
Forest County, WI

Index No. V-23