

Document Number

176967

REGISTER'S OFFICE
Forest County, Wis.
Received for record this 9th day
of October A.D., 2002 at
9:00 o'clock A.M. and recorded
in Vol. Corner Restoration
page N 13
Kay Swanson Deputy
Register of Deeds

U.S. PUBLIC LAND SURVEY MONUMENT RECORD

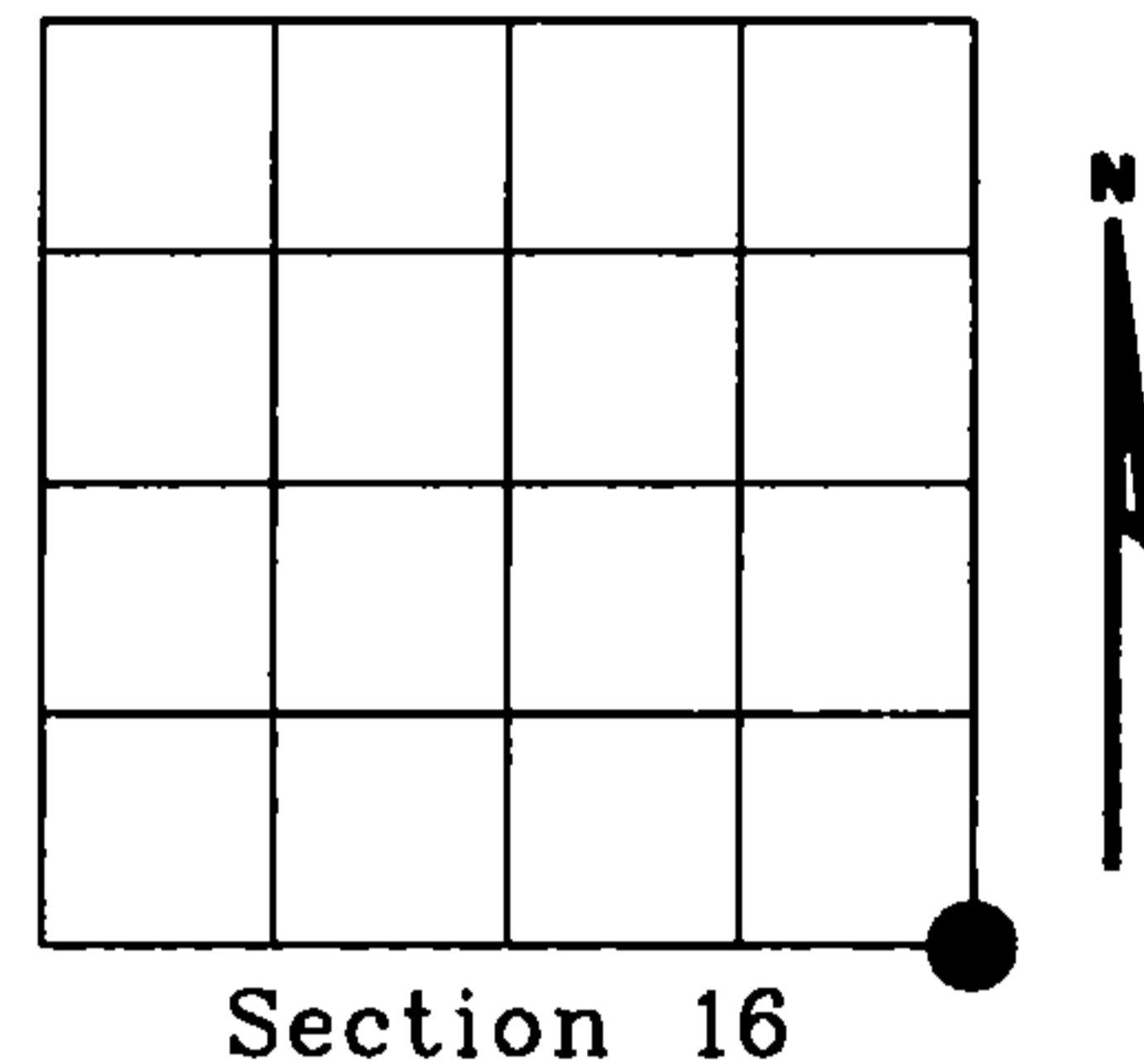
NOTE: This form is intended and designed to fulfill all requirements of Wisconsin Administrative Code, Chapter A-E 7.08 U.S. Public Land Survey Monument Record (3)(a)(b)(c)(d)(e)(f)(g)(h)(i). An additional sheet may be added if necessary to conform with said requirements.

(a) Corner location: Township 36 North

Range 12 East

Town of CRANDON

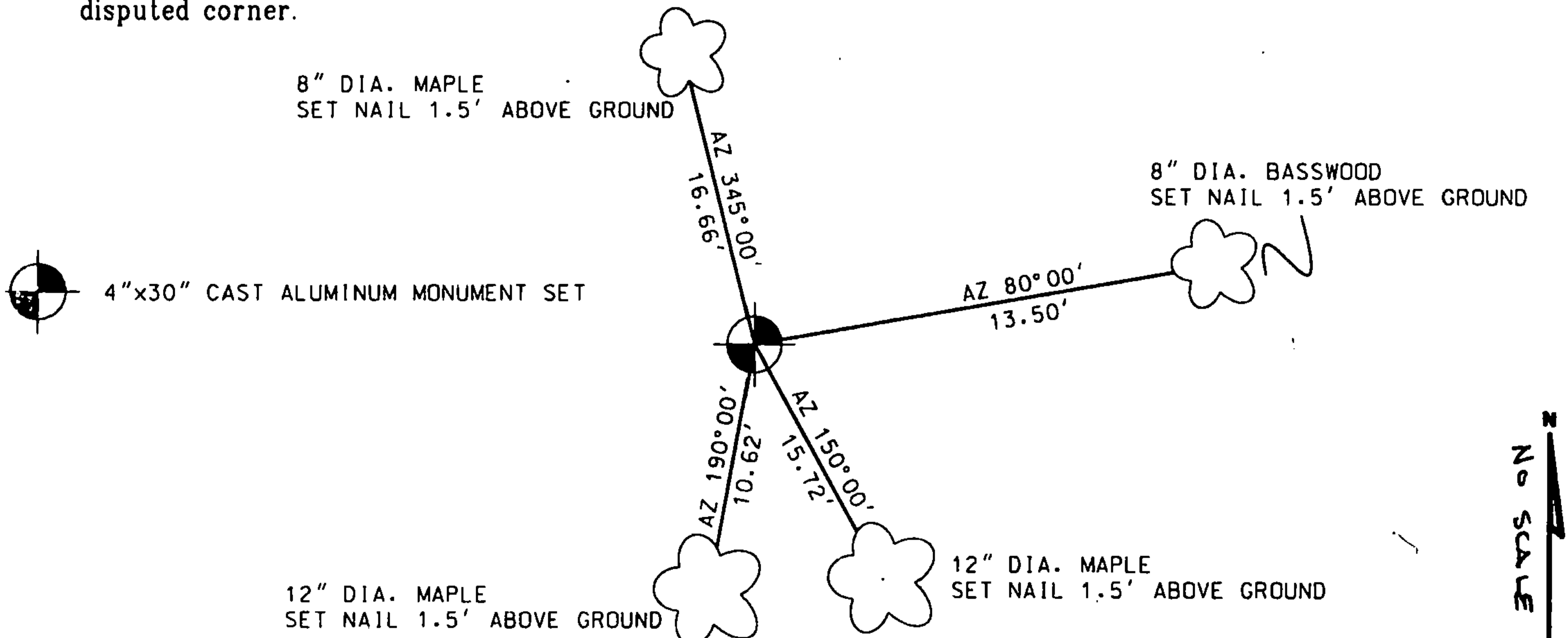
FOREST County, Wisconsin



(b)(f)(g)(h) Description of monument found at this corner and if it was accepted, state all evidence (material, testimonial, occupational, plats, records, other monuments) used as a basis for accepting. If not accepted or if nothing was found, state evidence used as basis for establishing location. If reestablished through lost corner proportionate methods, indicate all monuments, distances and directions used to establish. Indicate type of monument found or set and sign post.

Researched records, Original corner established by Wm. E. Daugherty in August, 1859. Area had been logged and original bearing trees are gone. Found field notes by A.J. Lytle, dated 7-19-1937 in the Oneida County Land Information Office for survey of Section 16. Lytle referenced that on 7-22-1937 he found one original bearing tree and the roots of another. As site found 1" dia. iron pipe with square wood post scribed 15, 16, 21 & 22 on each side of post. I believe iron pipe best perpetuated original corner. I replaced iron pipe with 4" x 30" standard county monument.

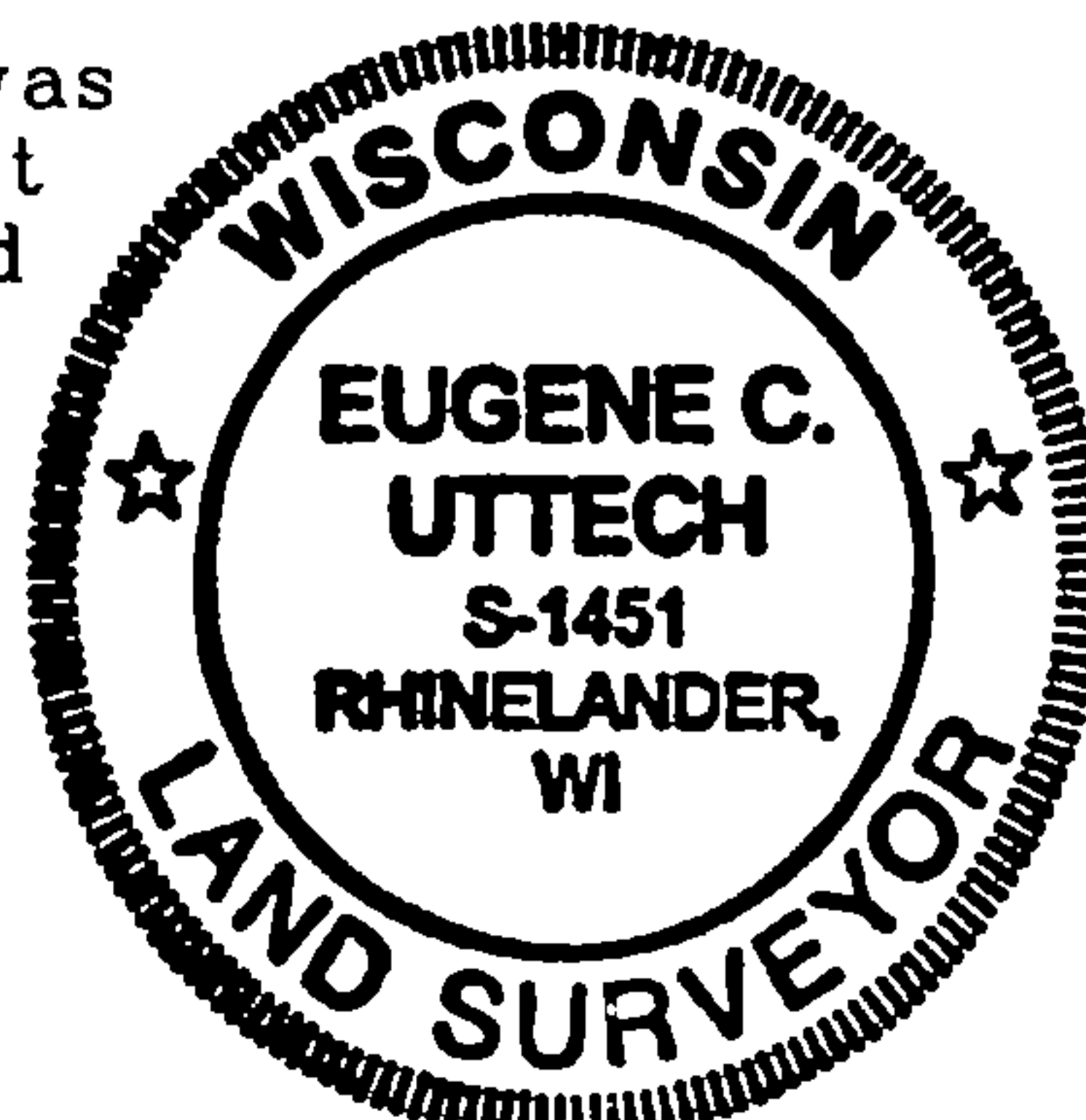
(c)(d)(e) Plan view of corner with ties to at least 4 witness monuments. If in disagreement with previously established corner, show the distances between the two corners and also indicate the ties to the disputed corner.



(i) I, Eugene C Uttech, Registered Land Surveyor *S-1451 hereby certify that the corner location on this record was determined by me or under my direction and control and that this U.S. Public Land Survey Monument Record is correct and complete to the best of my knowledge and belief.

Eugene C Uttech
Signature

Sept. 27, 2002
Date



Index No. N13

43612160000