

# U.S. PUBLIC LAND SURVEY MONUMENT RECORD

Instructions: This record shall show the location of the corner and shall include all of the following nine elements (a through i).

(a) Identify the corner by reference to the U.S. public land survey system.

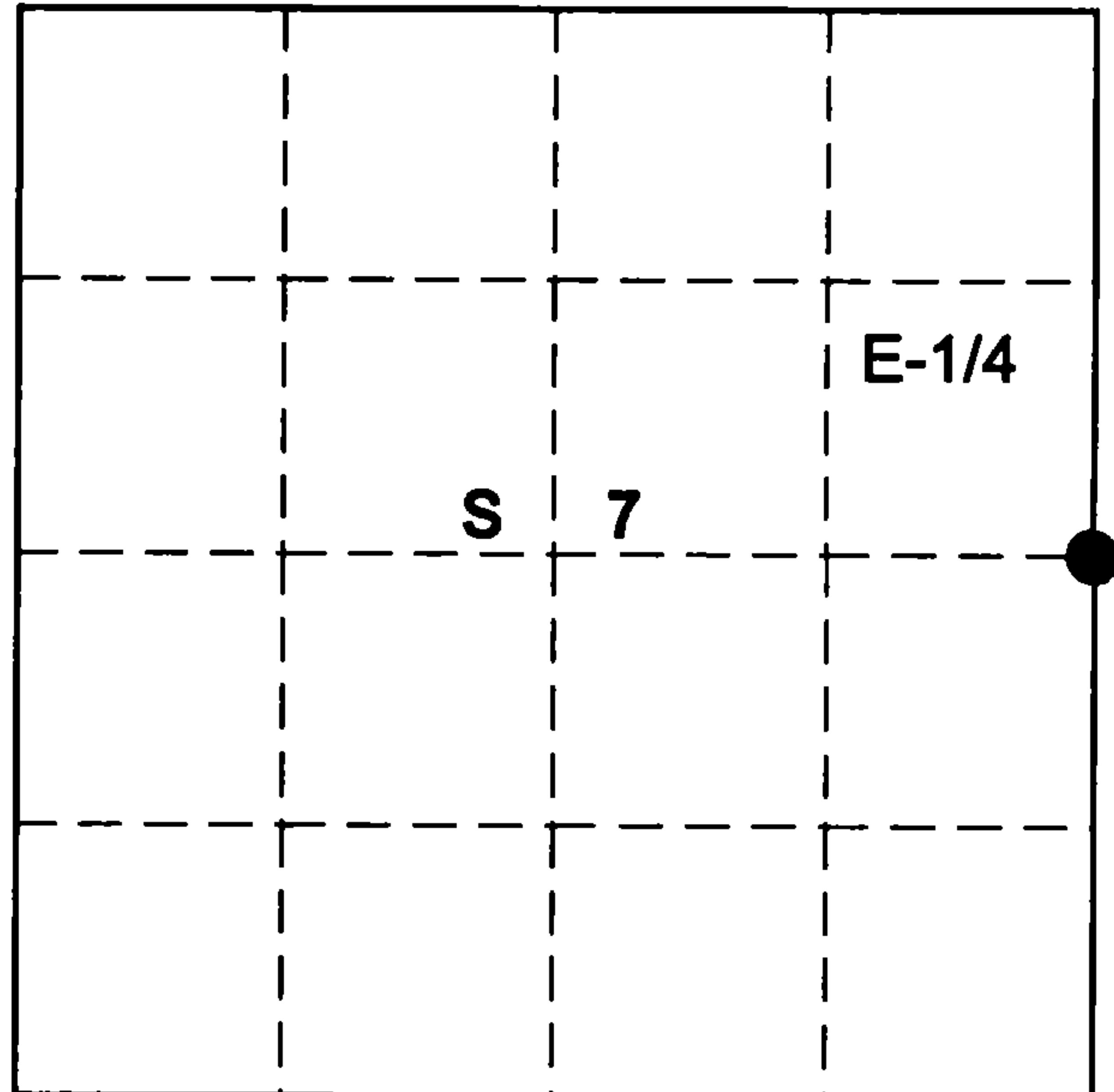
○ = Corner monument restored.

E-1/4 Corner

Sec. 7, T 36 N, R 12 E

Type of Monument:

2-1/4" Aluminum Pipe 3-1/4" Alloy Cap  
6" above ground



## FOREST COUNTY

(b) Describe any record evidence, monument evidence, occupational evidence, testimonial evidence or any other material evidence you considered, and whether the monument was found or placed.

No evidence of original or subsequent monument or accessories.

Reestablished quarter section corner on a proportional measurement.

Total distance from northeast to southeast section corner of section 7, is 5374.44'

Set quarter section corner 2687.22' intermediate.

Wallace Yocum a life time adjoining land owner of 80 years said he had never witness a corner in place.

(c) In the plan view drawing below, provide reference ties to at least 4 witness monuments, or, if the location is within a municipality, to at least 2 witness monuments. (Witness monuments shall be made of concrete, natural stone, iron or other equally durable material).

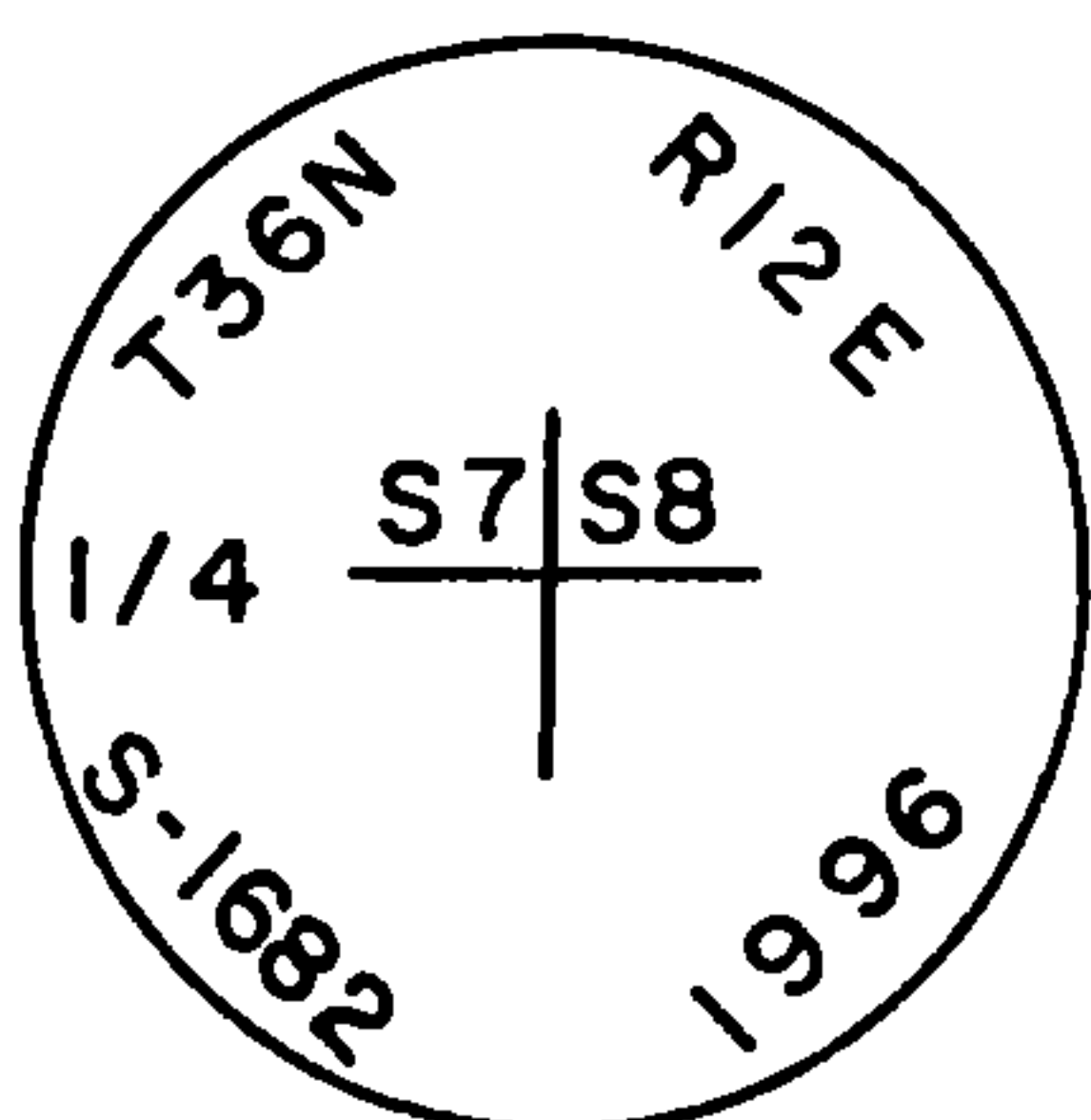
Describe witness monuments:

(d) Show a plan view drawing depicting the relevant monuments and reference ties which is sufficient in detail to enable accurate relocation of the corner monument if the corner monument is disturbed. Indicate north.

### Marked New Bearing Trees

- (1) 6" Twin Red Maple N81E 29.30
- (2) 6" Balsam Fir S56E 45.35'
- (3) 7" Balsam Fir S04E 57.26'
- (4) 7" Twin Red Maple S88W 6.27'

Monument Set  
6" above ground



(3)

County File No. \_\_\_\_\_

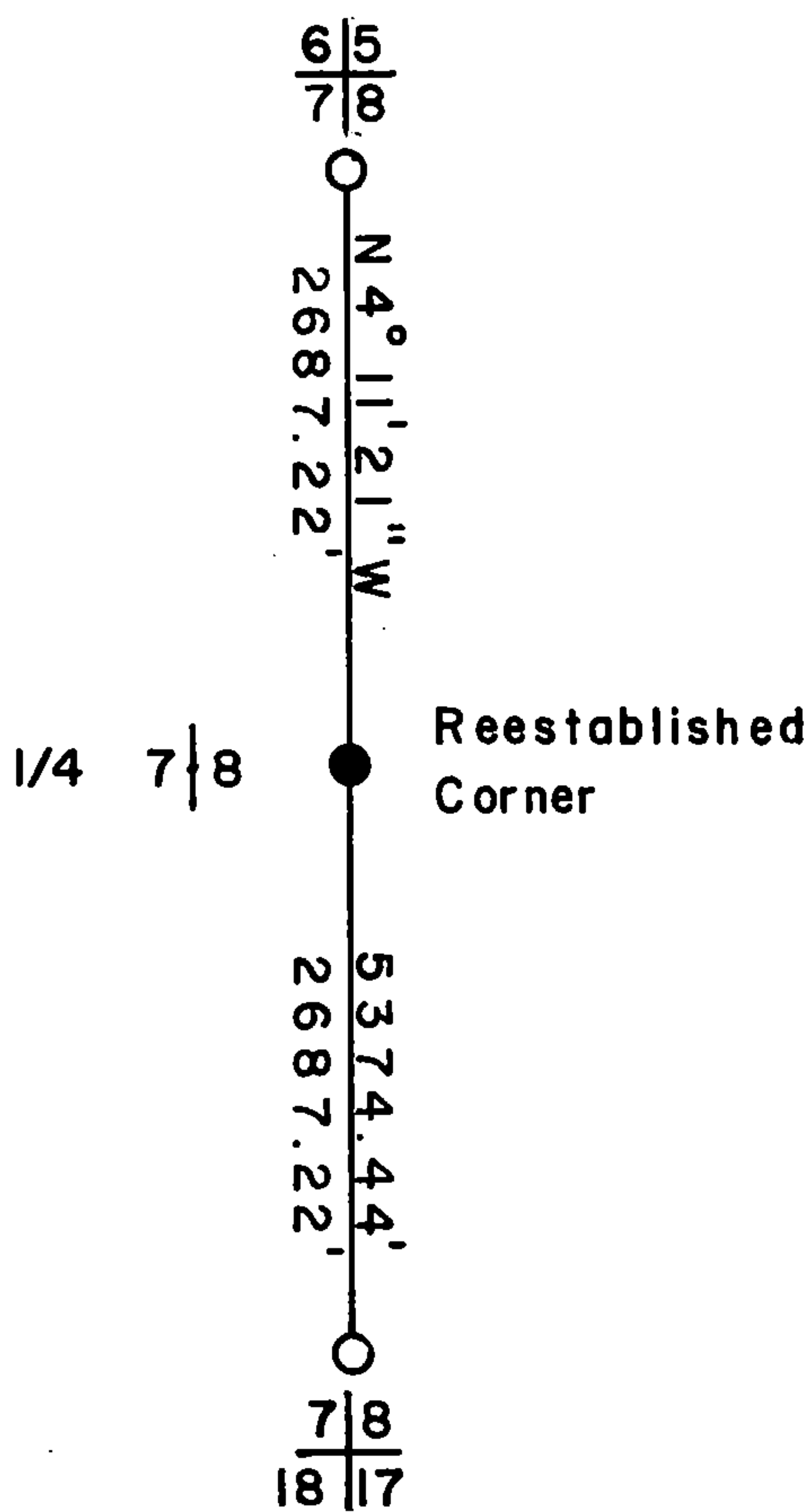
43612072000

(e) Describe any discrepancy between the location of the corner as restored or reestablished and the location of that corner as previously restored or reestablished by distance and direction. Show the discrepancy on the plan view drawing under (d), above. Show the distances between the corner as previously restored or reestablished and (1) the corner as restored or reestablished, and (2) to at least 2 of the witness monuments shown on the drawing in (d), above.

(f) Was the corner restored through acceptance of (1) an obliterated evidence location, or, (2) a found perpetuated location?

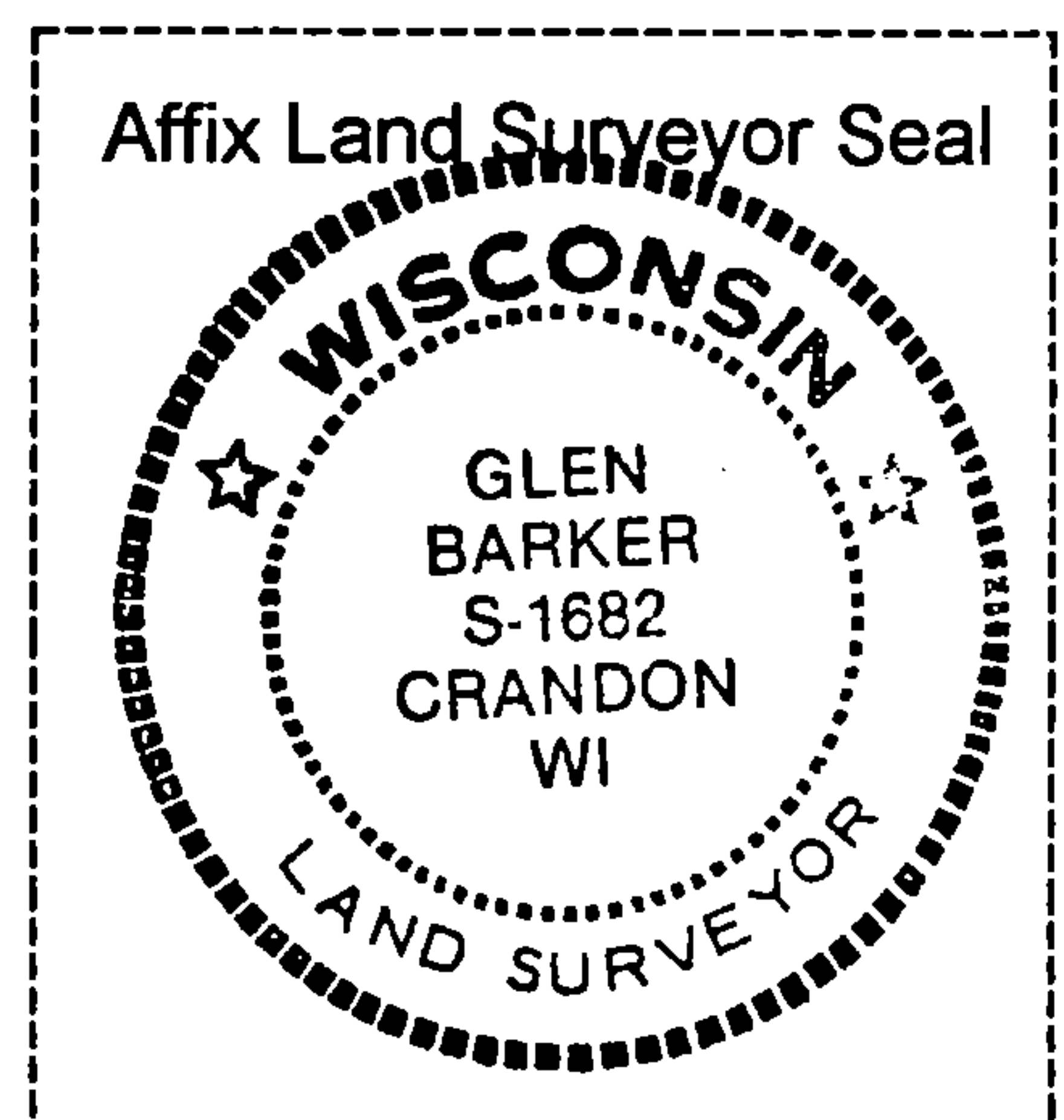
(g&h) Was the corner reestablished through lost corners proportionate methods? If so, show the method, including the directions and distances to other public land survey corners used as evidence or used for proportioning in determining the corner location?

Proportionate method.



REGISTER'S OFFICE /  
Forest County, Wis.  
Received for record this 5th day  
December A.D., 1997 at  
3:45 o'clock P.M. and recorded  
in Vol. Case Restrictions  
page 45; 736-74  
Glen Barker Deputy  
Register of Deeds

(i) I, Glen Barker  
(type or print name) certify that the corner location shown on this record was determined by me or under my direction and control and that this U.S. Public Land Survey Monument is correct and complete to the best of my knowledge and belief.



Signature Glen Barker Date 12-05-97 SEC. ---7---TWN.---36---RNG.-12E---