

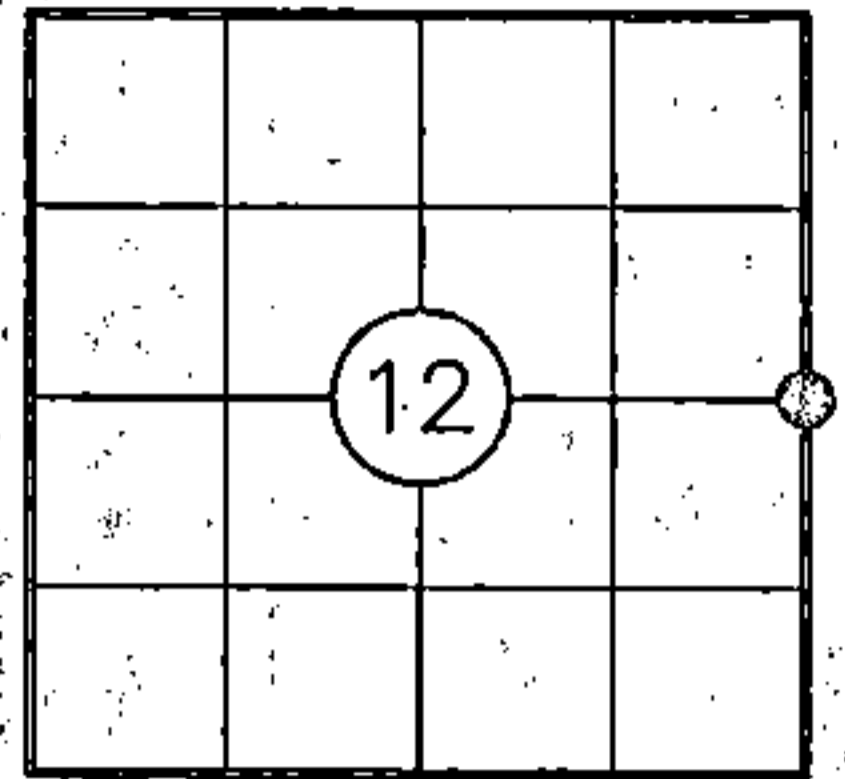
ORIGINAL FILED IN ONEIDA COUNTY
 COPY SENT TO FOREST COUNTY FOR REFERENCE

U.S. PUBLIC LAND SURVEY MONUMENT RECORD

NOTE: THIS FORM IS INTENDED AND DESIGNED TO FULFILL ALL REQUIREMENTS OF WISCONSIN ADMINISTRATIVE CODE CHAPTER A-E 7.08 U.S. PUBLIC LAND SURVEY MONUMENT RECORD (3) (a)(b)(c)(d)(e)(f)(g)(h)(i). AN ADDITIONAL SHEET MAY BE ADDED IF NECESSARY TO CONFIRM WITH SAID REQUIREMENTS.

(a) CORNER LOCATION:

E1/4 CORNER OF SECTION 12
 TOWNSHIP 36 NORTH
 RANGE 11 EAST
 TOWN OF MONICO
 COUNTY OF ONEIDA



(b) HISTORY OF ORIGINAL CORNER:

ORIGINAL SURVEYOR: WILLIAM E. DAUGHERTY
 DATE OF SURVEY: COMMENCED JULY, 1859
 COMPLETED AUGUST, 1859

ORIGINAL BEARING TREES: 12" Y. BIRCH - EAST, 23 LKS.
 12" Y. BIRCH - N85°W, 21 LKS.

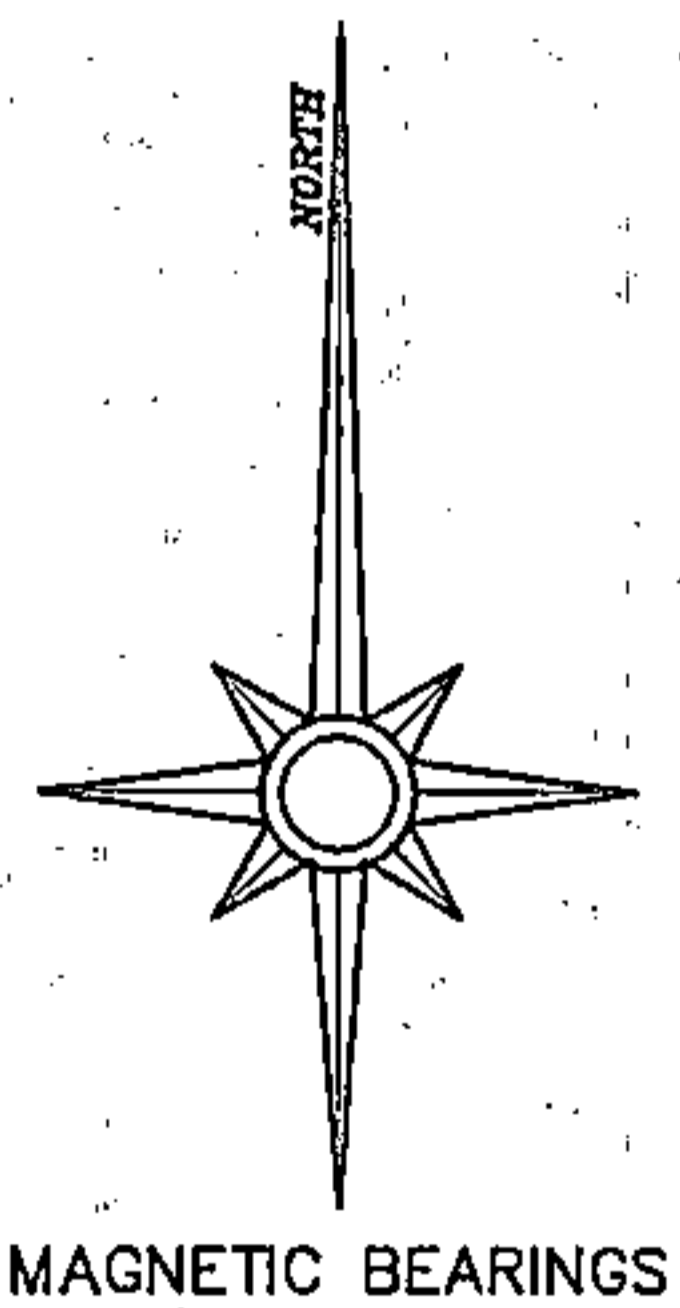
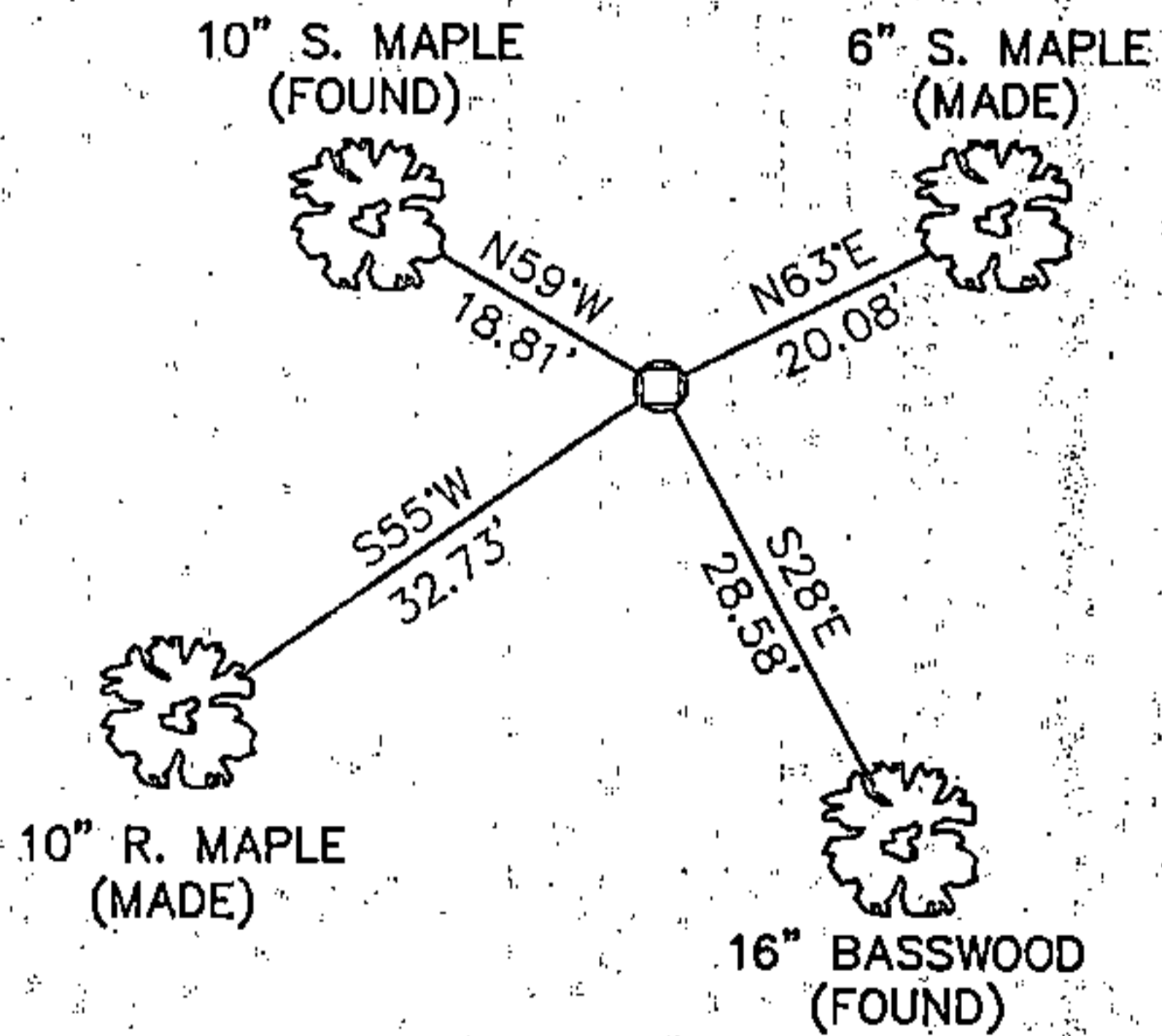
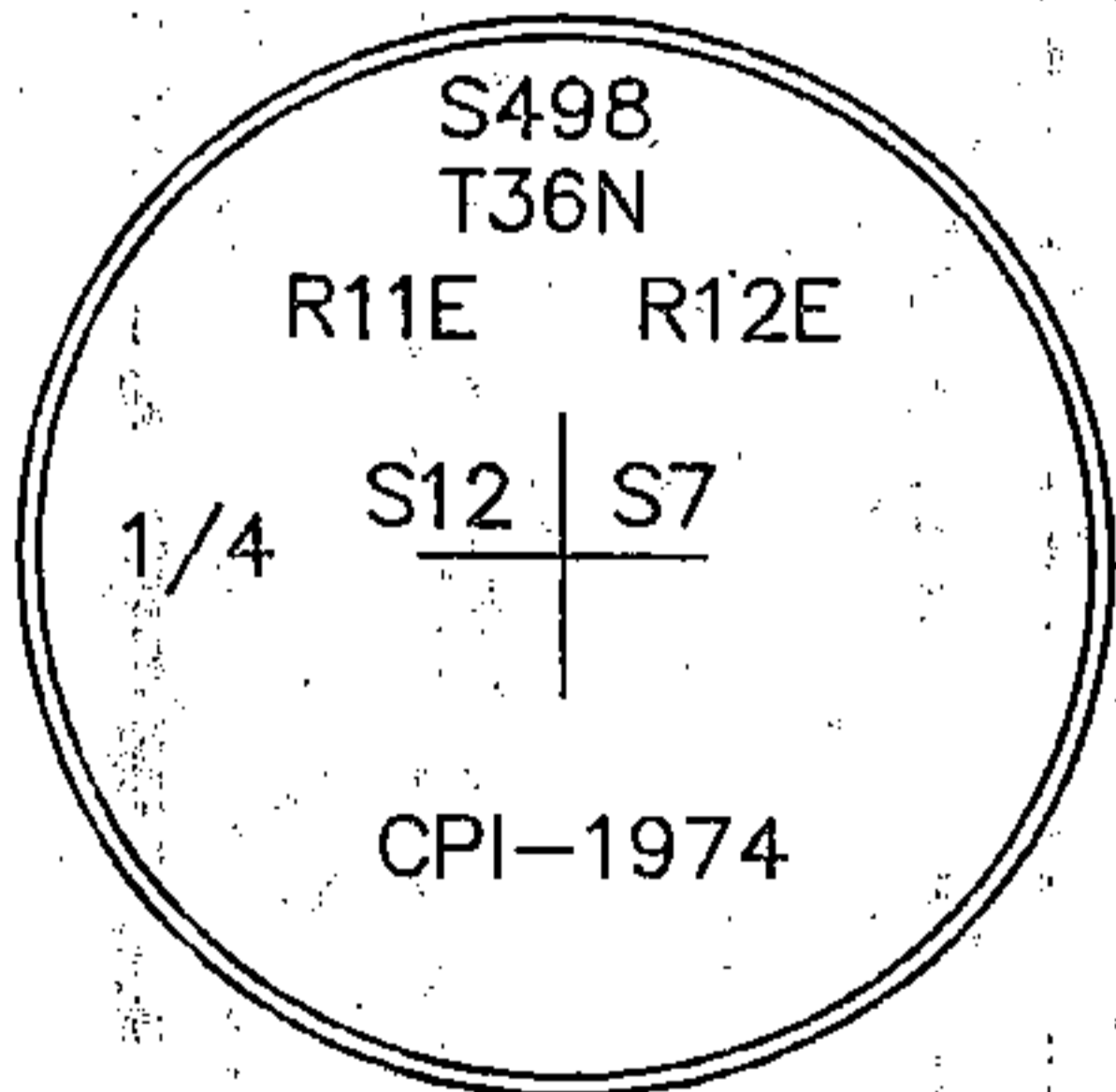
(f)(g)(h) DESCRIPTION OF MONUMENT FOUND AT THIS CORNER AND IF IT WAS ACCEPTED STATE ALL EVIDENCE (MATERIAL, TESTIMONIAL, OCCUPATIONAL, PLATS, RECORDS, OTHER MONUMENTS) USED AS A BASIS FOR ESTABLISHING LOCATION. IF REESTABLISHING THROUGH LOST CORNER PROPORTIONATE METHODS, INDICATE ALL MONUMENTS, DISTANCES, AND DIRECTIONS USED TO ESTABLISH. INDICATE TYPE OF MONUMENT AND SIGN POST FOUND OR SET.

1950'S: H.C. LAWRENCE RECOVERED AN OLD WOOD POST AND AN ORIGINAL Y. BIRCH BT. HE SET A 4" X 4" CEDAR POST AND MADE NEW BT'S.

1974: PHILIP T. HANSEN FOUND LAWRENCE'S WOOD POST AND BT'S. HE SET A 2-1/2" DIA. IRON PIPE WITH BRASS CAP IN PLACE OF THE WOOD POST AND MADE NEW BT'S.

2005: I FOUND HANSEN'S MONUMENT AND BT'S IN GOOD CONDITION. I MADE NEW TIES AS SHOW BELOW AND SET A CARSONITE POST 1' WEST.

(c)(d)(e) PLAN VIEW OF CORNER WITH TIES TO AT LEAST FOUR WITNESSES. IF IN DISAGREEMENT WITH PREVIOUSLY ESTABLISHED CORNER, SHOW THE DISTANCES BETWEEN THE TWO CORNERS AND ALSO INDICATE THE TIE TO THE DISPUTED CORNER.



LEGEND

○ 2" Iron Pipe With Brass Cap Found

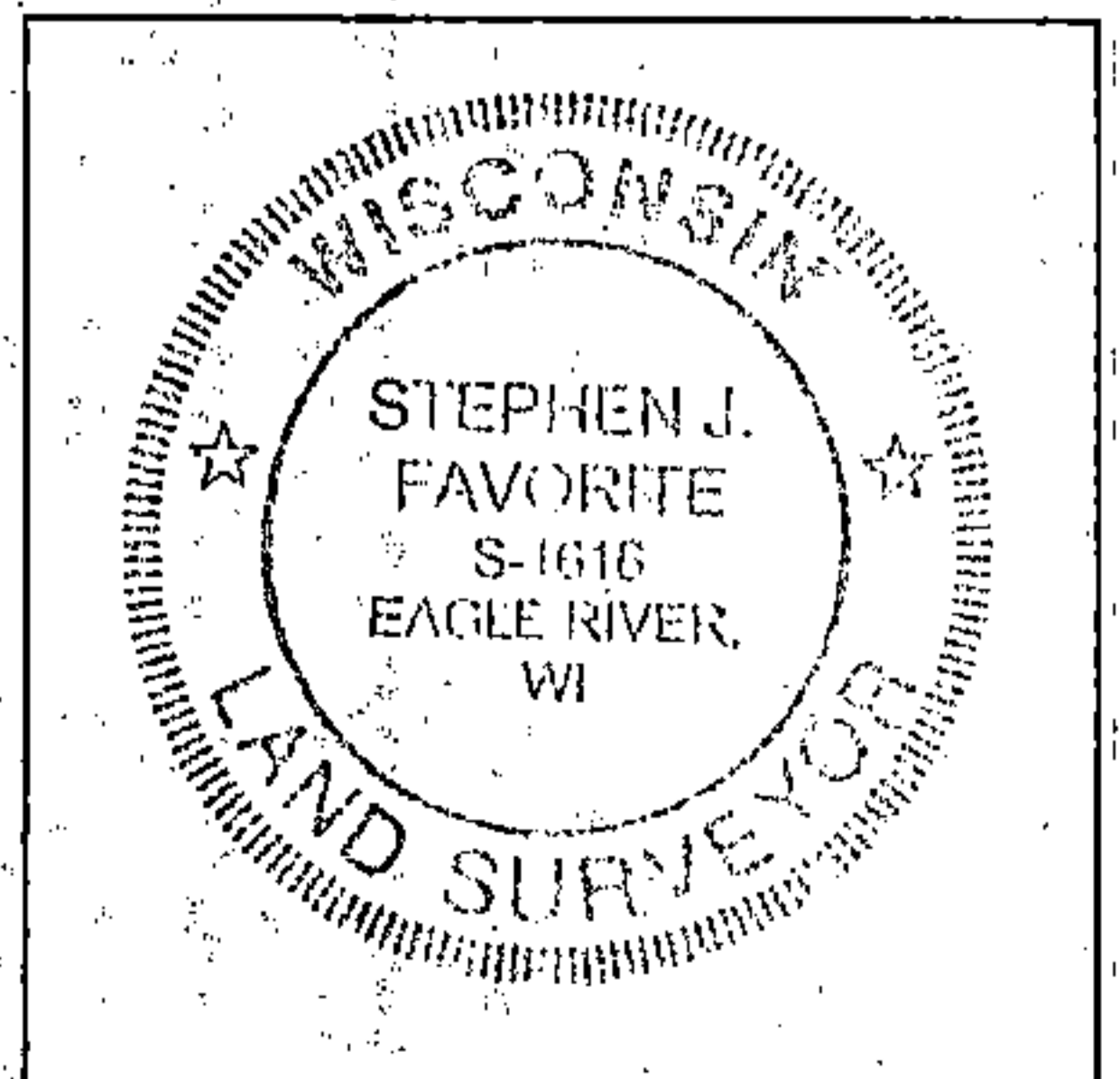
NOTES:

1) ALL DISTANCES ARE MEASURED TO NAIL ON SIDE OF TREE

2) NOT TO SCALE

I STEPHEN J. FAVORITE, REGISTERED LAND SURVEYOR NO. 1616, HEREBY CERTIFY THAT THE CORNER LOCATION ON THIS RECORD WAS REFERENCED BY ME OR UNDER MY DIRECTION AND CONTROL AND THAT THIS U.S. PUBLIC LAND SURVEY MONUMENT RECORD IS COMPLETE TO THE BEST OF MY KNOWLEDGE AND BELIEF.

Stephen J. Favorite 12-27-05
 SIGNATURE DATE



INDEX NO.

G-25

G-7 Forest-00

361122000

436.1122.000

G-1

CERTIFIED LAND CORNER RESTORATION

Index No. **G 1**

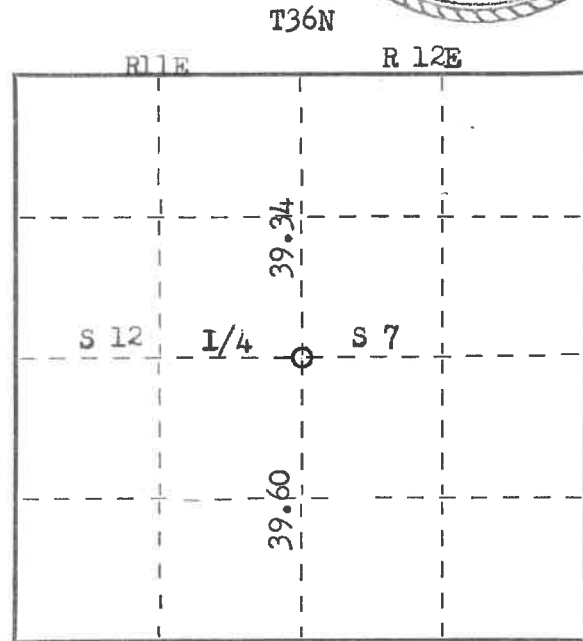
State of Wisconsin }
County of Forest } ss.

I Philip T. Hansen, do hereby certify that on the 5th day of December, 1974, I found evidence of the W. 1/4 corner of Section 7 Township 36, North, Range 12 East, Fourth, Principal Meridian, as described hereon; and that from this evidence I established a new monument and accessories as described hereon to perpetuate the original location of this corner.

Resident witnesses:



FORM 985 H. G. MILLER CO., MILWAUKEE



○ = Corner monument restored.

History of original corner establishment:

Original corner established by William E. Daugherty, Government Deputy Surveyor in 1859

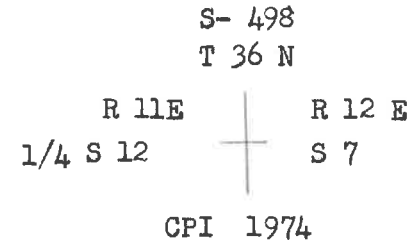
- Y. Birch 12 " East 23 lks
- Y. Birch 12 " N85W 21 lks

Description of corner evidence found: H.C. Lawrence retracement survey of 1950 stated he recovered the old post and original Y. Birch B.T. He set a new 4" cedar post scribed and blazed a sugar maple 10" S30W 20 1/2 lks. Recovered Lawrence's 4 inch cedar post. leaning but in fair condition. Also recovered old bearing trees. Bass 16" S30E 43 1/2 lks

Description of monument and accessories I established to perpetuate the original location of this corner.

Set 2 1/2" x 5' galvanized iron pipe with brass cap stamped as follows. Blazed and scribed new bearing tree.

- Sugar maple 6" N60W 28 lks
- Sugar Maple 14" S30W 20 1/2 lks
- Recovered BTs
- Y. Birch 12" East 23 lks
- Basswood 20" S30E 43 1/2 lks



Dated at Argonne, Wis., this 17th day of December, 1974.

Signature Philip T. Hansen Title Registered Land Surveyor Registration No. S 498
(County Surveyor, Registered Land Surveyor, or other duly authorized official)

Office of Register of Deeds, County of Forest, I hereby certify that the within instrument was filed in this office for record on the 17th day of March, 1975 at 3:25 o'clock P. M. Document No. 106812

Eugene Staszynski
(Register of Deeds)
By _____ Deputy

436112-2000