

CERTIFIED LAND CORNER RESTORATION

State of Wisconsin }
County of Forest } ss.

I Jean F. Resvick, do hereby certify that on the 22nd day of July, 1968, I found evidence of the East quarter corner of Section 13 Township 35 North, Range 16 East, Fourth Principal Meridian, as described hereon; and that from this evidence I established a new monument and accessories as described hereon to perpetuate the original location of this corner:

Description of original monument and accessories and subsequent restorations:

Surveyed in 1857 by Artemas Curtis
40.00 ch. North between Sections 13 & 18
Set Post
Yellow Birch, 6", N22°W, 23 lks.
Yellow Birch, 6", S74°E, 18 lks.
Marinette County survey in 1934 by J. J. Jenkins, Menominee County Surveyor.
Set 4-inch diameter iron post with brass cap for one-quarter corner between Sections 13 & 18.

Description of corner evidence found:

Marinette County survey 4-inch iron post with brass cap.

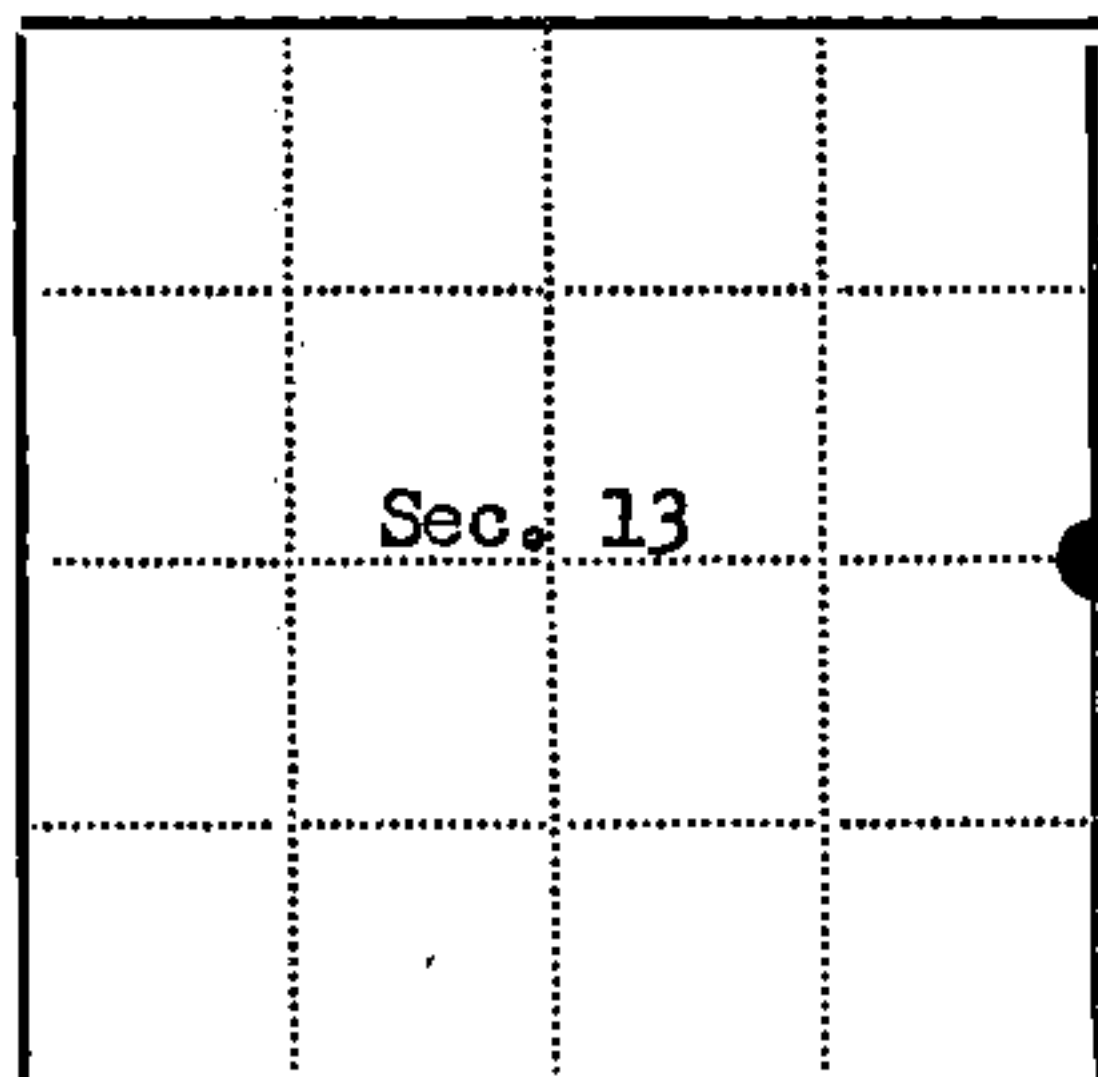
Description of ~~monument and~~ accessories I established to perpetuate the original location of this corner:

Blazed and scribed the following bearing trees for corner location.

- Maple 5" diam., bears S35°E, 32.68 ft. or 49.52 lks. dist.
- Maple 5" diam., bears S58°W, 117.65 ft. or 178.26 lks. dist.
- Center line of N. and S. road, bears west, 33 ft. or 50 lks. dist.
- 4 x 4 cedar post with signs, bears S45°W, 2 ft. or 3.10 lks. dist.



43516132000



● = Corner monument restored
□ =

Resident witnesses.....

Dated at Rhinelander Wisconsin, this 3rd day of September 1968

Signature Jean F. Resvick Title Cadastral Surveyor
(County Surveyor, Registered Land Surveyor, or other duly authorized official)

Surveyors Registration No. S-802 DOCUMENT NO. 95884

Office of Register of Deeds County of Forest

I hereby certify that the within instrument was filed in this office for record on the 31st day of January 1969, and was filed in Book No. I Page No. L-25 of County Records.

Signature Eugene Staszny Title Register of Deeds

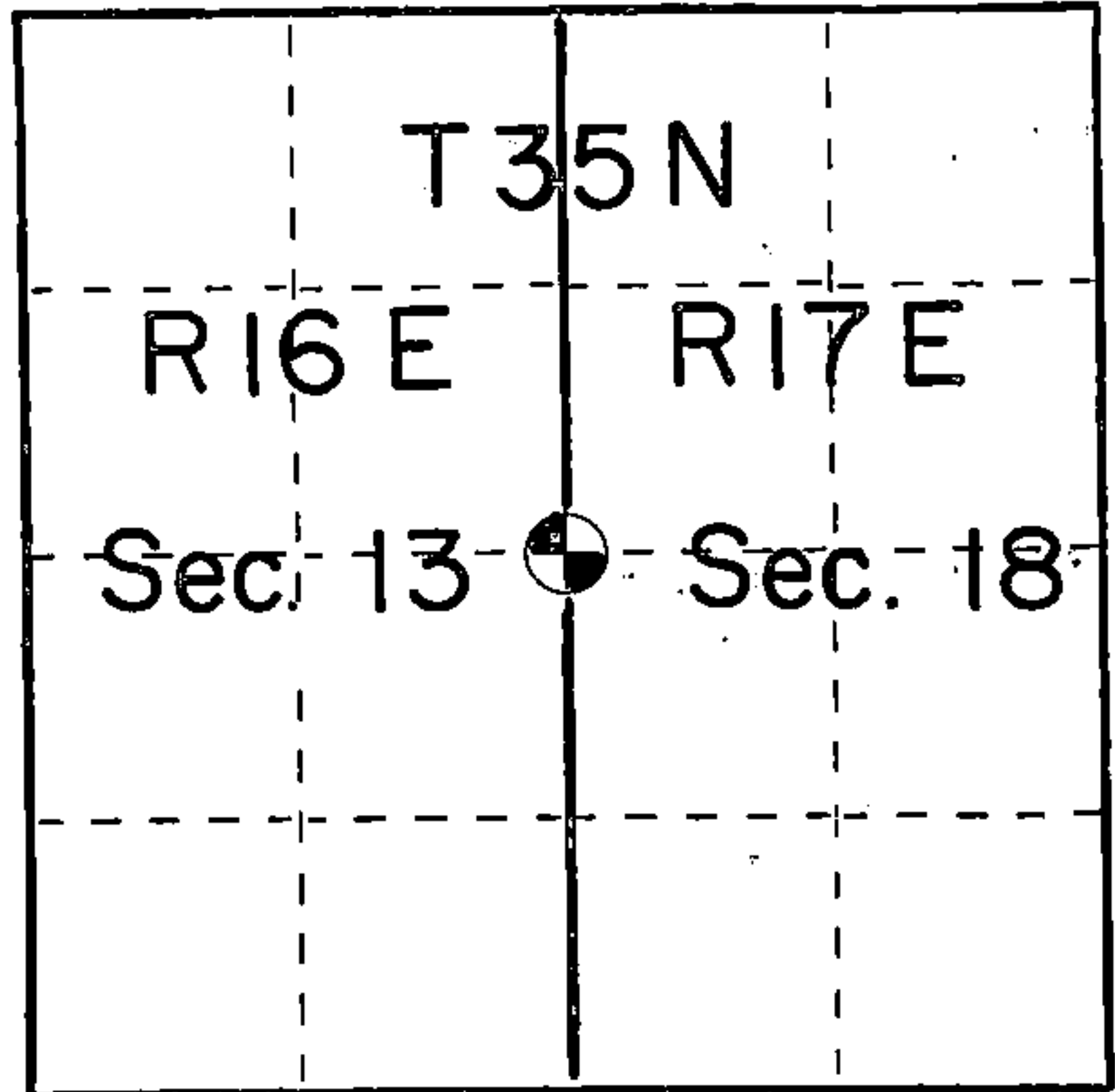
Township 35 North, Range 16 East, Section 13, Index No. L-25, Page No.

L 25

U. S. PUBLIC LAND SURVEY MONUMENT RECORD

INSTRUCTIONS: This record shall show the location of the corner and shall include all of the following nine elements (a through i).

- (a) Identify the corner by reference to the U.S. public land survey system.
- = Corner monument restored.



Quarter corner between Sections 13 and 18 Township 35 North, Range 16 east and Range 17 East. Forest and Marinette Counties. Respectfully.

- (b) Describe any record evidence, monument evidence, occupational evidence, testimonial evidence or any other material evidence you considered, and whether the monument was found or placed.

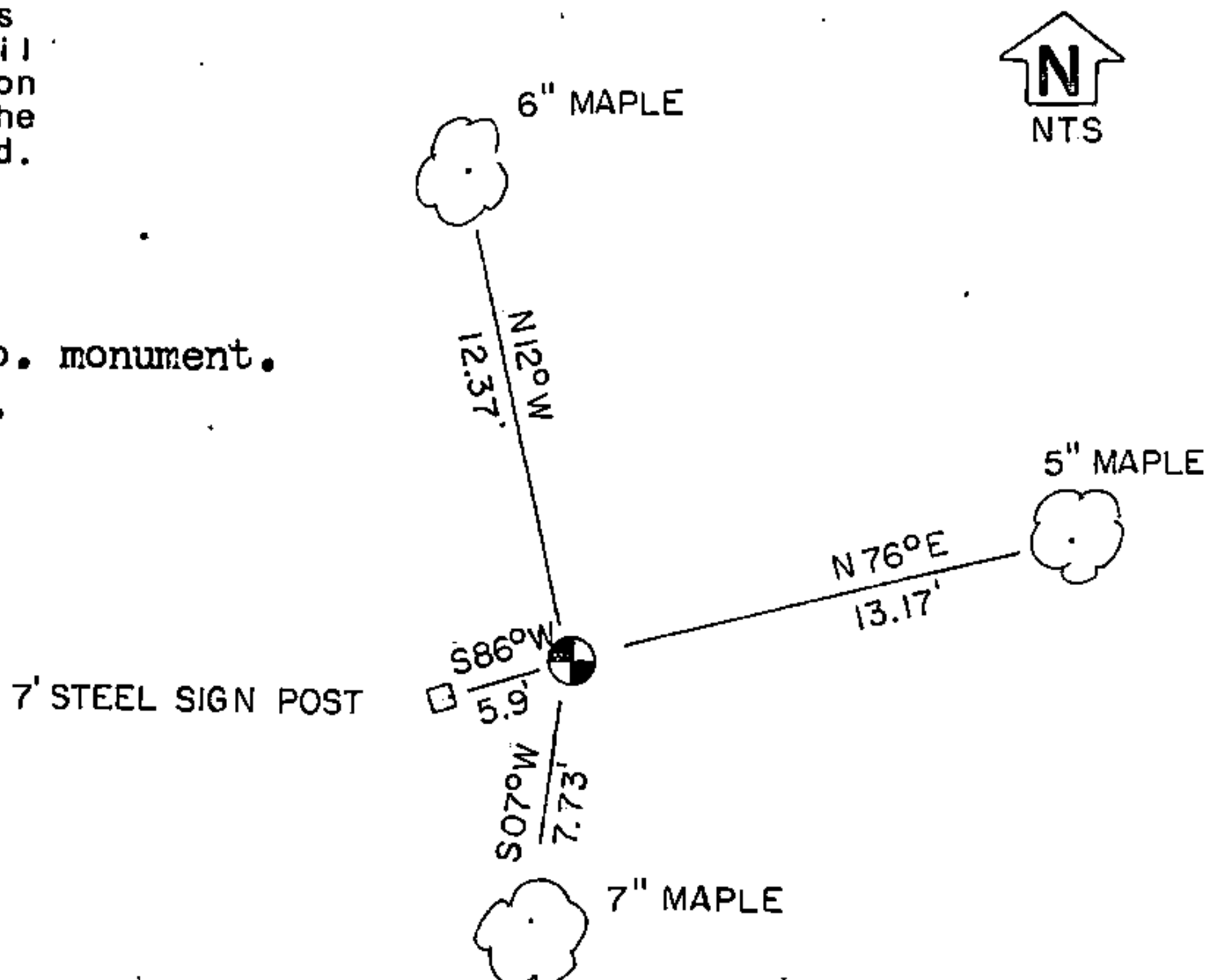
Surveyed in 1857 by Artemas Curtis
 Set wood post 40.00 ch. north of SE of Sec. 13- SW of 18.
 Yellow Birch 6" N22°W, 23 lks.
 Yellow Birch 6" S74°E, 18 lks.

4" iron pipe with brass cap, set by J.J. Jenkins, Menominee County Surveyor

- (c) In the plan view drawing below, provide reference ties to at least 4 witness monuments, or, if the location is within a municipality, to at least 2 witness monuments. (Witness monuments shall be made of concrete, natural stone, iron or other equally durable material.) Describe witness monuments.

- (d) Show a plan view drawing depicting the relevant monuments and reference ties which is sufficient in detail to enable accurate relocation of the corner monument if the corner monument is disturbed. Indicate north.

Existing Marinette Co. monument. as previously stated.



REGISTER'S OFFICE }
 Forest County, Wis. }
 Received for record this 7th day
 of August A.D., 1985 at
3:00 o'clock P.M. and recorded
 in Vol. CORNER RESTORATIONS
 page L-25

Paul Aschenbrenner
 Register of Deeds

435161320000

(e) Describe any material discrepancy between the location of the corner as restored or reestablished and the location of that corner as previously restored or reestablished by distance and direction. Show the discrepancy on the plan view drawing under (d), above. Show the distances between the corner as previously restored or reestablished and (1) the corner as restored or reestablished, and (2) to at least 2 of the witness monuments shown on the drawing in (d), above.

None

(f) Was the corner restored through acceptance of (1) an obliterated evidence location, or, (2) a found perpetuated location?

Found perpetuated location.

(g&h) Was the corner reestablished through lost corner proportionate methods? If so, show the method, including the directions and distances to other public land survey corners used as evidence or used for proportioning in determining the corner location?

No.



(i) I, Kim H. Pritzlaff
(type or print name) certify that the corner location shown on this record was determined by me or under my direction and control and that this U.S. Public Land Survey Monument Record is correct and complete to the best of my knowledge and belief.

Signature

Date

Kim H. Pritzlaff

5/16/85