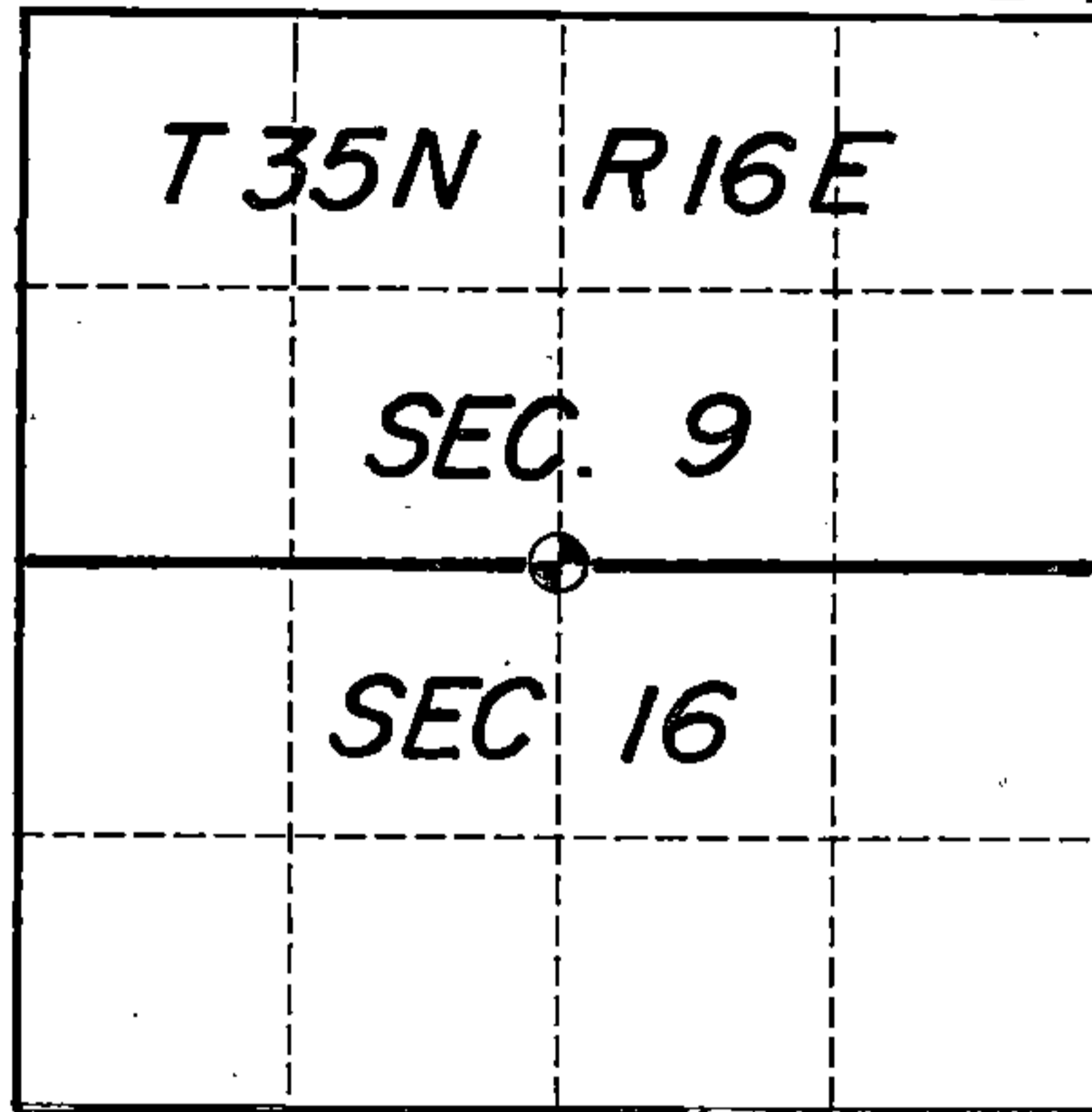


# U. S. PUBLIC LAND SURVEY MONUMENT RECORD

INDEX NO. J-11

Quarter \_\_\_\_\_ Corner to Section 9 16 T 35 N, R 16 E  
(Section/Quarter)



Show distances and bearings if set by proportional measurement.

○ = Corner monument restored.



I, Kim H Pritzlaff, RLS No. 1259

(Type or print name) certify that the corner location shown on this record was determined by me or under my direction and control and that this U.S. Public Land Survey Monument Record is correct and complete to the best of my knowledge and belief.

*Kim Pritzlaff*  
Signature

1993  
Date

History of original corner establishment, record evidence, monument evidence, occupational evidence, testimonial evidence or any other material evidence, and what you found and how the monument was set.

In 1858 James McBride, contract surveyor, set this corner at 40 chains with the following bearing trees:

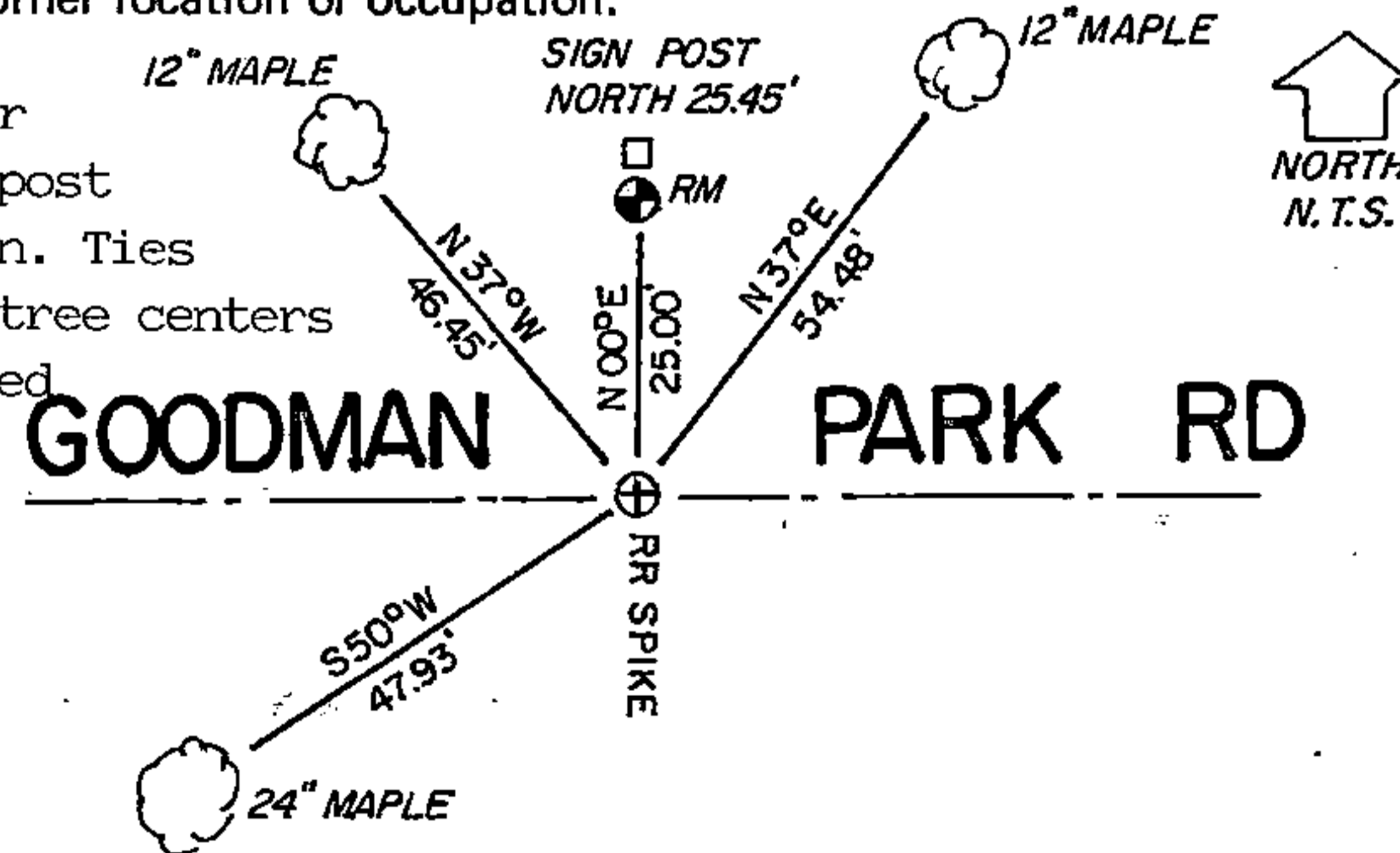
|     |     |      |    |
|-----|-----|------|----|
| Elm | 10" | N17W | 12 |
| Elm | 10" | S09W | 42 |

1928 Goodman Lumber Company notes found a hardwood post at this corner and set a 2"x 32" flu pipe next to a 4" Hemlock post.

CCC Notes found a post at this corner measuring 406.7 feet west of road intersection. Road construction had obliterated this evidence. I set the corner in the present road centerline 406.7 feet west of the road centerline intersection with Michigan Creek Road. No other evidence was located.

In the plan view drawing below, provide reference ties to at least 4 witness monuments, or, if the location is within a municipality, to at least 2 witness monuments. (Witness monuments shall be made of concrete, natural stone, iron or other equally durable material, except wood other than bearing trees.) Also, show any material discrepancies between the corner restored or re-established and the location of any other previous corner location or occupation.

Set a railroad spike at the corner location with a 2"x 36" aluminum post stamped Reference Monument as shown. Ties are to aluminum nails set in the tree centers which trees were blazed and scribed. Bearings are magnetic.



Certificate Ready For Filing:

*Ralph [Signature]*  
Acting District Ranger

149057

4351699024

INDEX NO. \_\_\_\_\_

MAINTENANCE RECORD

Condition of Monument \_\_\_\_\_

Condition of Ties \_\_\_\_\_

New Ties, if any:

\_\_\_\_\_ Date

\_\_\_\_\_ Signature

Condition of Monument \_\_\_\_\_

Condition of Ties \_\_\_\_\_

New Ties, if any:

\_\_\_\_\_ Date

\_\_\_\_\_ Signature

Condition of Monument \_\_\_\_\_

Condition of Ties \_\_\_\_\_

New Ties, if any:

\_\_\_\_\_ Date

\_\_\_\_\_ Signature

REGISTER'S OFFICE  
FOREST COUNTY, WIS.  
FILED  
NOV 23 1996  
At 9 O'clock A.M.  
Paul A. [Signature] Register of Deeds