

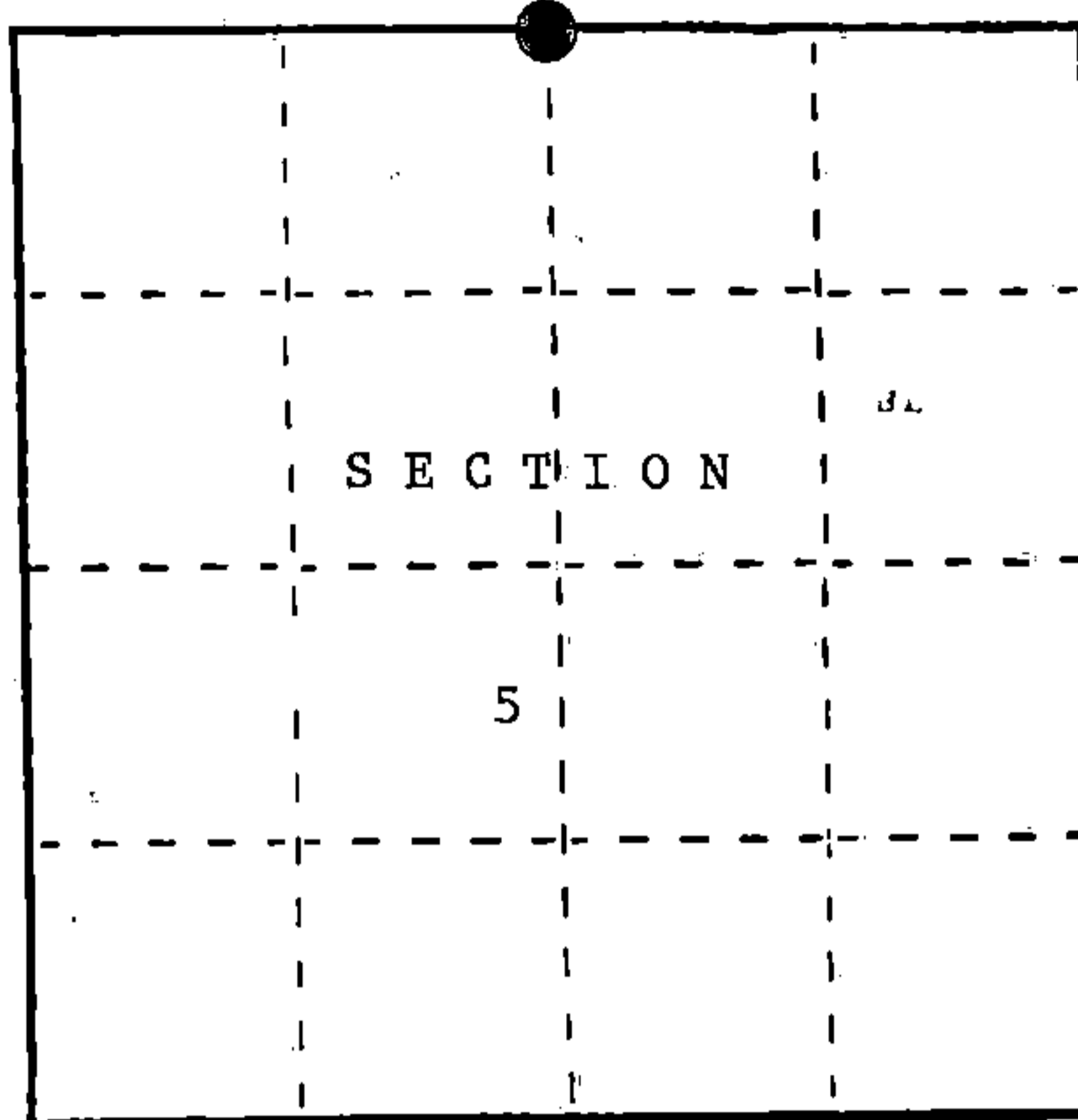
DOCUMENT NUMBER  
136602

U. S. PUBLIC LAND SURVEY MONUMENT RECORD

INSTRUCTIONS: This record shall show the location of the corner and shall include all of the following nine elements (a through i).

- (a) Identify the corner by reference to the U.S. public land survey system.
- = Corner monument restored.

Quarter Corner Common to Sections 5 and 32, T34-35N, R15E, Forest County, Wisconsin.



REGISTER'S OFFICE  
Forest County, Wis.

Received for record this 9th day  
of December A.D., 1988 at  
2:50 o'clock P.M. and recorded  
in Vol. CORNER RESTORATIONS

page A-7

Paul Aschenbrenner  
Register of Deeds

- (b) Describe any record evidence, monument evidence, occupational evidence, testimonial evidence or any other material evidence you considered, and whether the monument was found or placed.

In 1957, A. Curtis set a wood post for the corner and the following corner references:  
Sugar 11" N70°E 24 lks. Sugar 12" S25°W 25 lks.

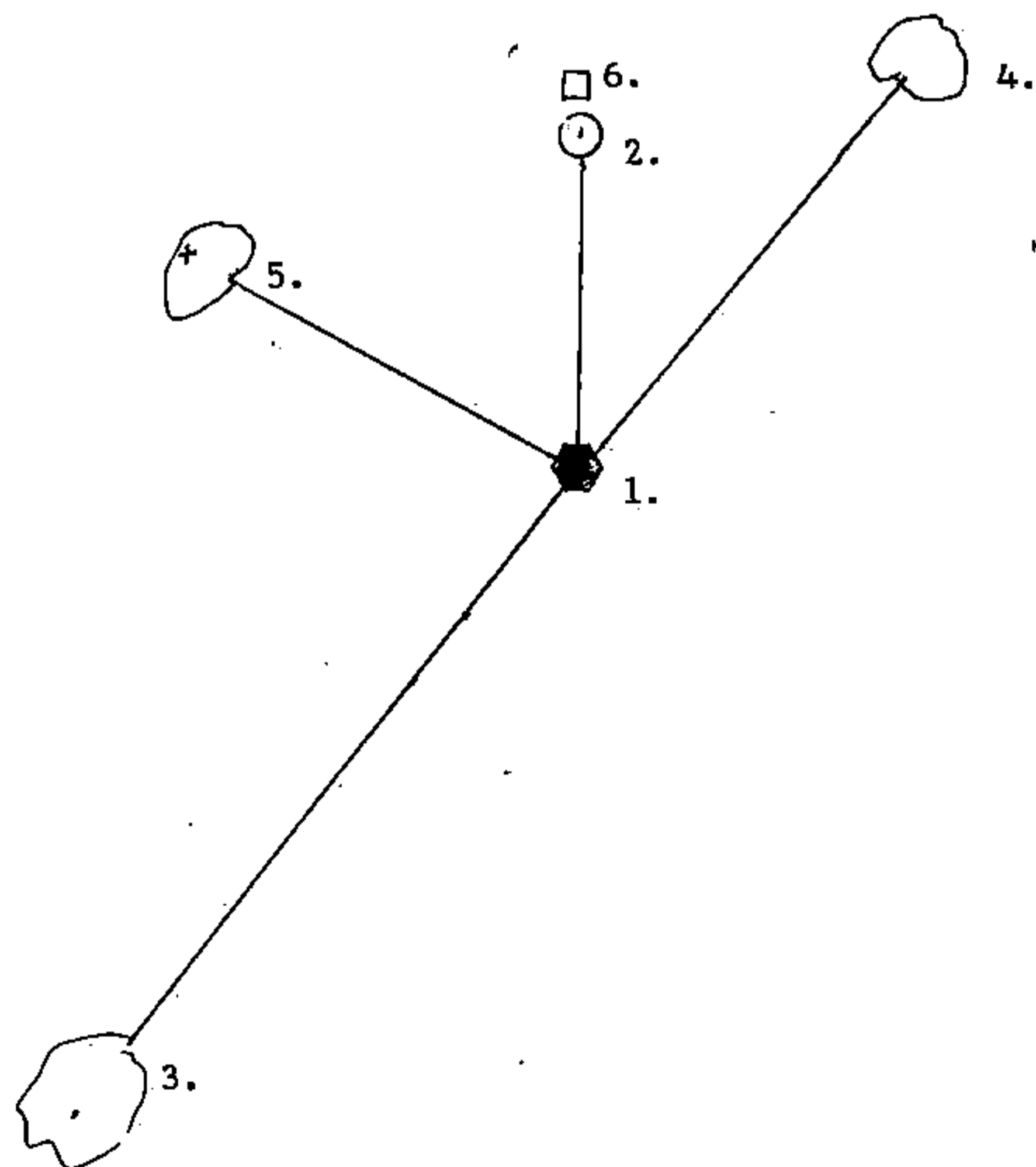
In 1908, J. Melendy recovered iron gas pipe set by N. H. Smith. He marked the following corner references:  
chiseled an "X" on stone 4'X4' N45 1/2°E 49 3/4 lks.  
chiseled an "X" on stone 3'X4' N60°40'W 61 1/3 lks.

In 1988, Schulke recovered the boulder to the Northwest. Restored the corner from the boulder reference. Placed an iron pipe 6 inches below the surface of the road.

- (c) In the plan view drawing below, provide reference ties to at least 4 witness monuments, or, if the location is within a municipality, to at least 2 witness monuments. (Witness monuments shall be made of concrete, natural stone, iron or other equally durable material.) Describe witness monuments.

- (d) Show a plan view drawing depicting the relevant monuments and reference ties which is sufficient in detail to enable accurate relocation of the corner monument if the corner monument is disturbed. Indicate north.

1. Set 1 1/4" X 2" Iron pipe
2. Set witness corner 2 1/2" X 36" aluminum magnetic cap monument stamped to identify the location of the corner North 32.9 ft.
3. Sugar Maple 7" S37°W 78.20 ft.
4. Sugar Maple 5" N39°E 48.66 ft.
5. "X" on Boulder 3'X4' N61°W 40.59 ft.
6. Steel sign post North of the Witness Corner Monument 2.6 ft.



A-7  
34-15-88

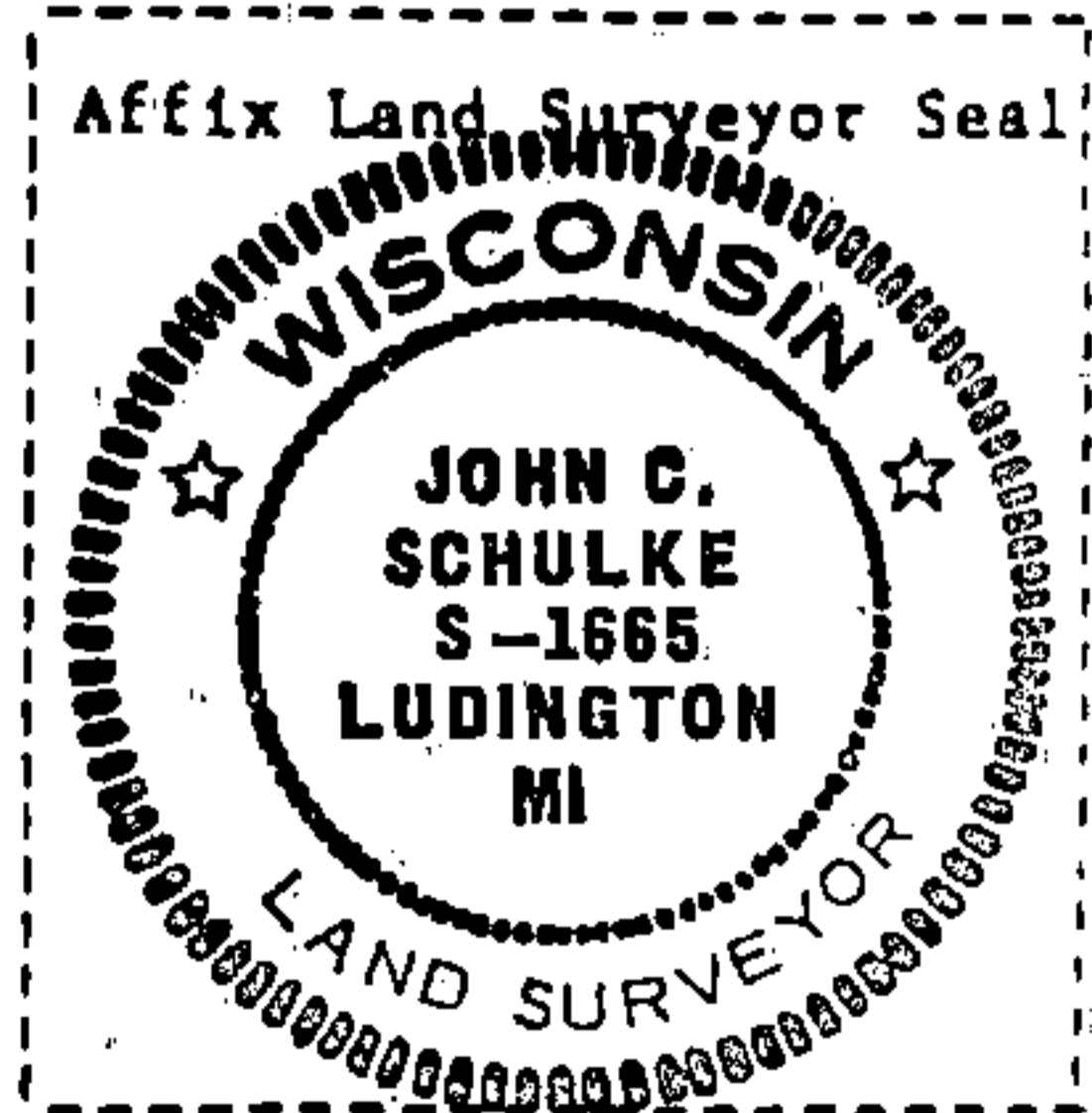
(e) Describe any material discrepancy between the location of the corner as restored or reestablished and the location of that corner as previously restored or reestablished by distance and direction. Show the discrepancy on the plan view drawing under (d), above. Show the distances between the corner as previously restored or reestablished and (1) the corner as restored or reestablished, and (2) to at least 2 of the witness monuments shown on the drawing in (d), above.

No discrepancy, first corner restoration.

(f) Was the corner restored through acceptance of (1) an obliterated evidence location, or, (2) a found perpetuated location?

(2) found perpetuated location  
Recovered bearing rock.

(g&h) Was the corner reestablished through lost corner proportionate methods? If so, show the method, including the directions and distances to other public land survey corners used as evidence or used for proportioning in determining the corner location?



(i) I, John C. Schulke  
(type or print name) certify that the corner location shown on this record was determined by me or under my direction and control and that this U.S. Public Land Survey Monument Record is correct and complete to the best of my knowledge and belief.

John C. Schulke Oct 16, 1988  
Signature Date

Certificate ready for filing: Dale B. Staeger  
District Ranger

Document Number  
191717

REGISTER'S OFFICE  
Forest County, Wis.

Received for record this 3rd day  
of AUGUST A.D., 2006 at  
8:45 o'clock A.M. and recorded  
in Vol. CORNER RESTORATIONS  
page A-7

*Carl Achenbacher*  
Register of Deeds

U.S. PUBLIC LAND SURVEY MONUMENT RECORD

(AS REQUIRED BY S. A-E 5.02, WI ADM. CODE)

HISTORY OF ORIGINAL CORNER ESTABLISHMENT AND SUBSEQUENT RESTORATIONS AND DESCRIPTION OF ANY RECORD, MONUMENT, OCCUPATIONAL, TESTIMONIAL, OR OTHER EVIDENCE CONSIDERED:

1857 - ARTEMIS CURTIS, SURVEYOR, SET POST

SET THE FOLLOWING WITNESSES:  
SUGAR MAPLE 11" N70°E 24 LINKS  
SUGAR MAPLE 12" S25°W 25 LINKS

1908 - J. MELENDY RECOVERED IRON GAS PIPE SET BY N. H. SMITH. HE MARKED THE FOLLOWING CORNER  
REFERENCES: CHISELED AN "X" ON STONE 4'X4' N45 1/2°E 49 3/4 LINKS  
CHISELED AN "X" ON STONE 3'X4' N60°40'W 61 1/3 LINKS

1988 - SURVEY MONUMENT RECORD DOC #136602. SCHULKE RECOVERED THE BOULDER TO THE NORTHWEST.  
RESTORED THE CORNER FROM THE BOULDER REFERENCE. PLACED AN 1-1/4" x 2" IRON PIPE 6 INCHES  
BELOW THE SURFACE OF THE ROAD.

SET THE FOLLOWING WITNESSES:  
2.5" x 36" ALUMINUM WITNESS MONUMENT NORTH 32.9 FEET  
SUGAR MAPLE 7" S37°W 78.20 FEET  
SUGAR MAPLE 5" N39°E 48.66 FEET  
"X" ON BOULDER 3' x 4' N61°W 40.59 FEET  
STEEL SIGN POST NORTH OF WITNESS MON. 2.6 FEET

2005 - WISDOT PLANS 9334-02-00 SHOWS FOUND NAIL.

CORNER WAS: (CHECK ALL THAT APPLY)

- RESTORED THROUGH ACCEPTANCE OF AN OBLITERATED LOCATION
- RESTORED THROUGH ACCEPTANCE OF A FOUND PERPETUATED LOCATION
- CONSIDERED A LOST CORNER AND REESTABLISHED THROUGH LOST CORNER PROPORTIONATE METHODS (INCLUDING A PLAN VIEW DRAWING SHOWING DISTANCES AND DIRECTIONS TO OTHER PUBLIC LAND SURVEY CORNERS USED FOR PROPORTIONING AND DETERMINING THE CORNER LOCATION)
- RESTORED OR REESTABLISHED IN A LOCATION THAT DIFFERS FROM A PREVIOUS RESTORATION OF REESTABLISHMENT (INCLUDE A PLAN VIEW DRAWING AND INDICATE WHAT WAS SET AND/OR FOUND)

DESCRIBE THE MONUMENT AND ACCESSORIES USED TO PERPETUATE THE LOCATION OF THIS CORNER. (INCLUDE A PLAN VIEW DRAWING AND INDICATE WHAT WAS SET AND/OR FOUND)

2006 - ZACHARY J. STEVENS, SURVEYOR, S-2467-008, FOUND NAIL IN BIT.

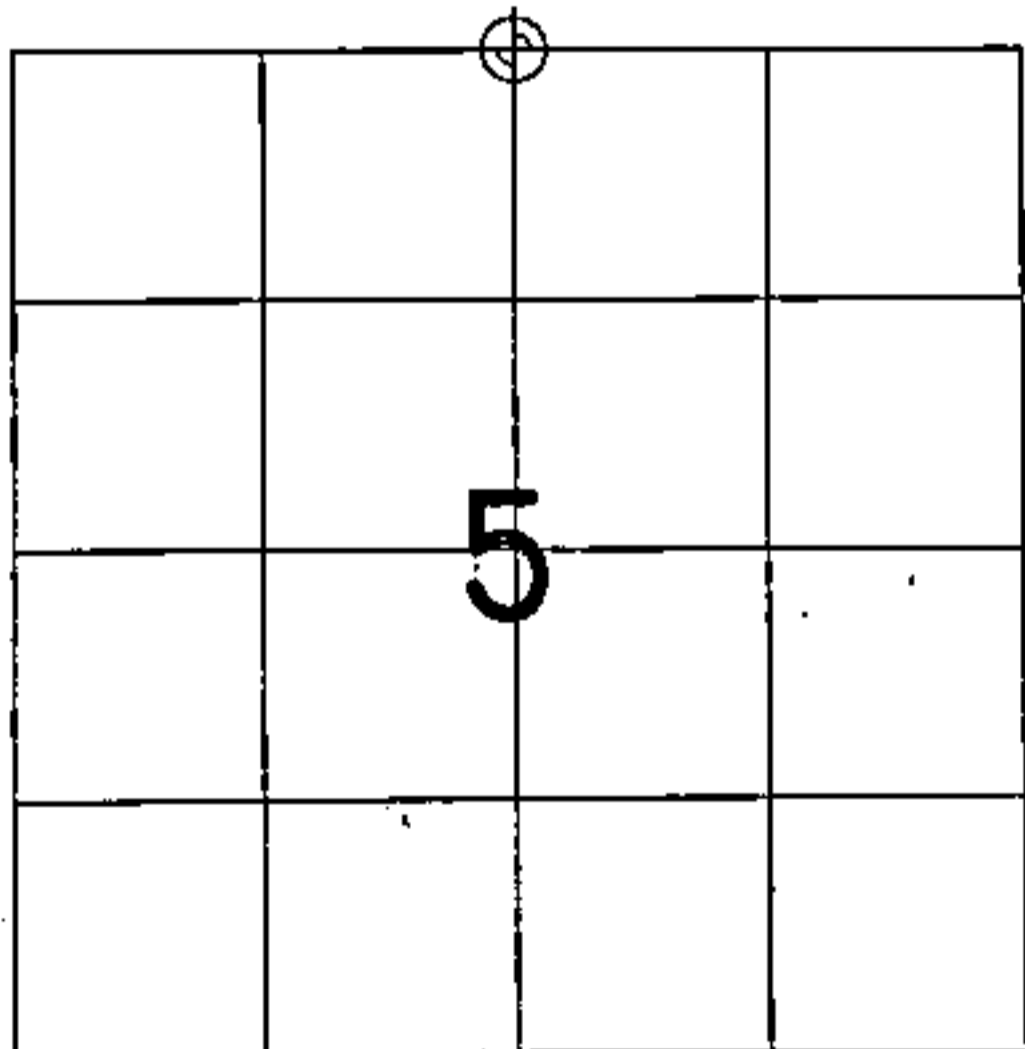
FOUND THE FOLLOWING WITNESSES:

2.5" ALUMINUM WITNESS CORNER N02°E 32.66 FEET

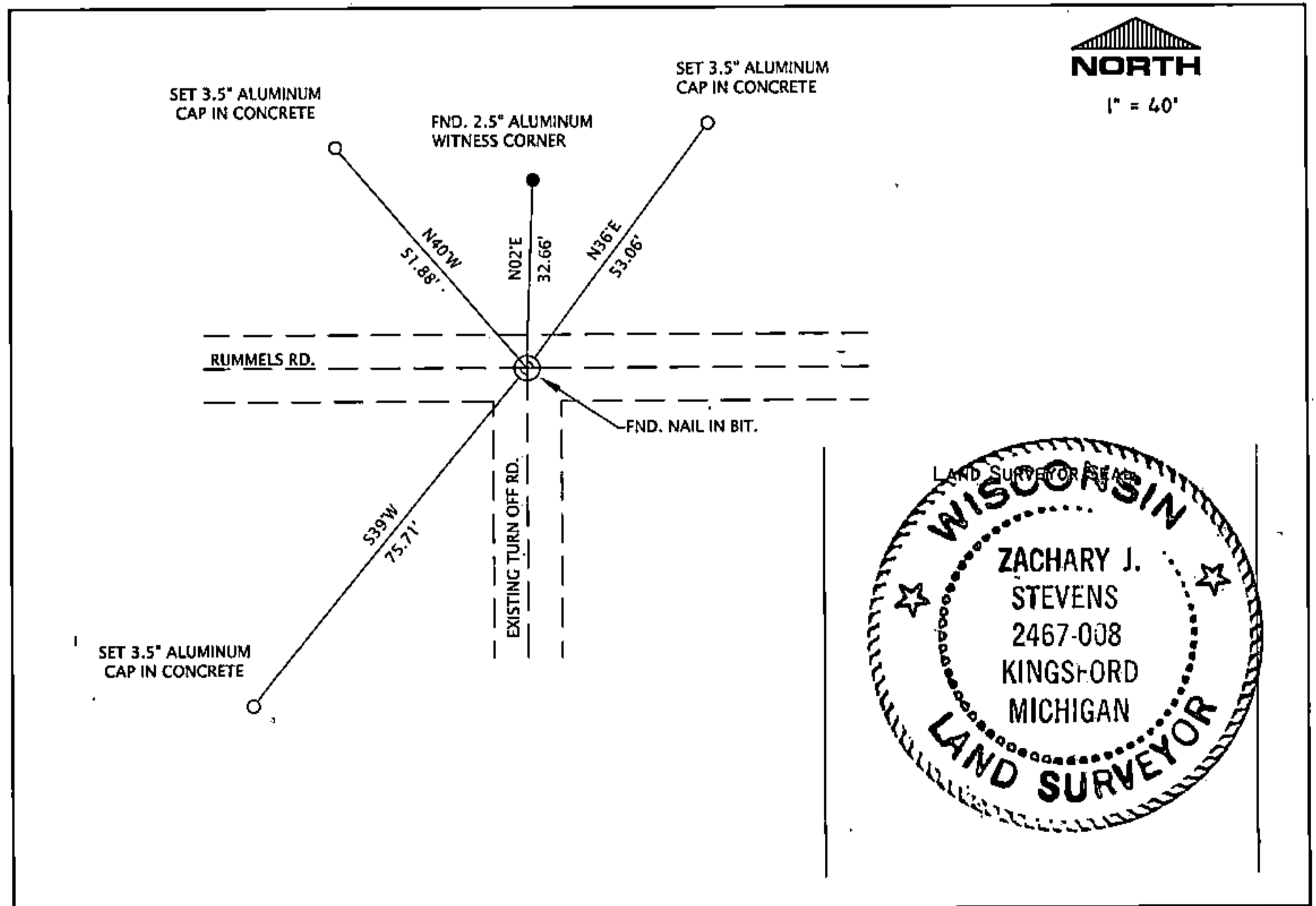
WISDOT SET THE FOLLOWING WITNESSES:  
Z. STEVENS MEASURED THE FOLLOWING:

3.5" ALUMINUM CAP IN CONCRETE N40°W 51.88 FEET  
3.5" ALUMINUM CAP IN CONCRETE N36°E 53.06 FEET  
3.5" ALUMINUM CAP IN CONCRETE S39°W 75.71 FEET

THE N 1/4  
CORNER OF SECTION 5,  
T. 34 N., R. 15 E.,  
FOREST COUNTY, WISCONSIN



⊕ = LOCATION OF CORNER



I, ZACHARY J. STEVENS RLS S-2467-008

(TYPE OR PRINT NAME) CERTIFY THAT THE CORNER LOCATION SHOWN ON THIS ABOVE RECORD WAS DETERMINED BY ME OR UNDER MY DIRECTION AND CONTROL AND THAT THIS U.S. PUBLIC LAND SURVEY MONUMENT RECORD IS CORRECT AND COMPLETE TO THE BEST OF MY KNOWLEDGE AND BELIEF.

INDEX No. A-7

*Zachary J. Stevens* 7/31/06  
SIGNATURE DATE

43515320020

A-7