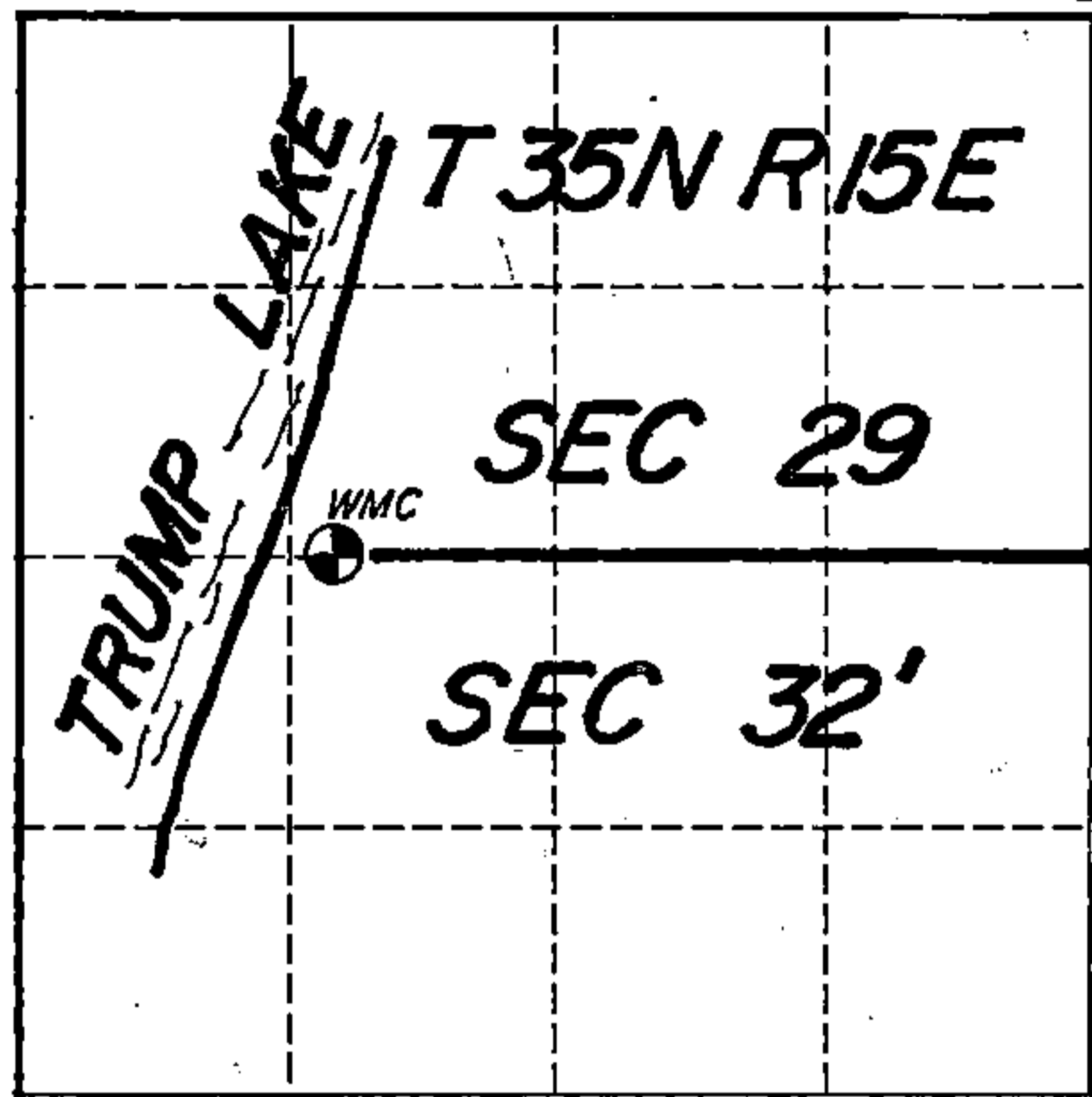


V-5,6

U. S. PUBLIC LAND SURVEY MONUMENT RECORD

INDEX NO. V-5,6

MEANDER Corner to Section 29 30 T 35 N, R 15 E
(Section/Quarter)



Show distances and bearings if set by proportional measurement.

○ = Corner monument restored.



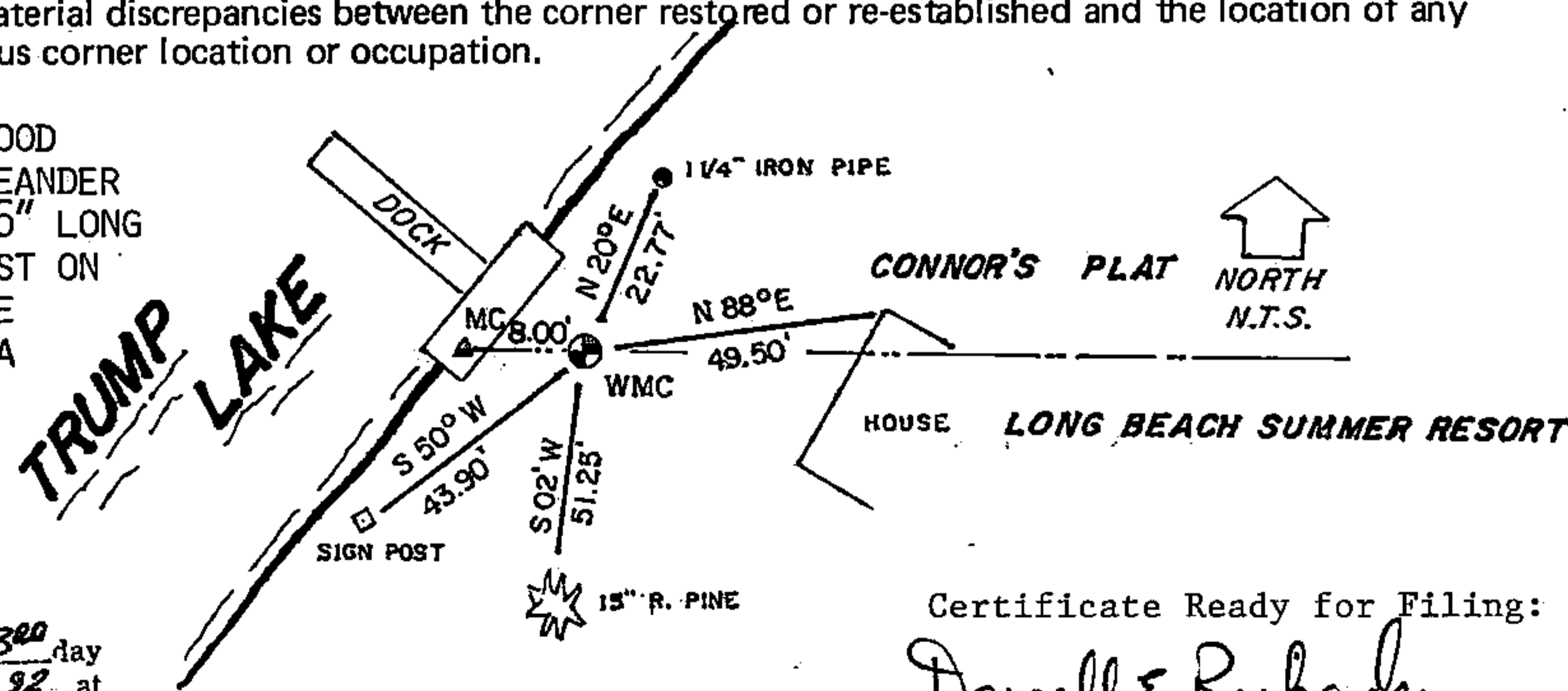
THE MEANDER CORNER FELL IN A WOOD DOCK. I SET A WITNESS TO THE MEANDER CORNER BEING A 2" DIAMETER X 36" LONG ALUMINUM MONUMENT 8.00 FEET EAST ON THE SECTION LINE FLUSH WITH THE GROUND AND LYING JUST WEST OF A SMALL STONE RETAINING WALL. BEARINGS ARE MAGNETIC.

History of original corner establishment, record evidence, monument evidence, occupational evidence, testimonial evidence or any other material evidence, and what you found and how the monument was set.

SURVEYED IN 1857 BY ARTEMAS CURTIS WHO SET A WOOD STAKE AT 72.93 CHAINS.
HEMLOCK 18", N20E, 19 LINKS
HEMLOCK 18", S22E, 7 LINKS

SURVEYED IN 1906 BY NATHAN SMITH WHO FOUND THE ORIGINAL B.T.S AND RESTORED THE CORNER WITH MONUMENTATION OF THE LONG BEACH SUMMER RESORT PLAT. THE COONORS PLAT IN SECTION 29 WAS ALSO TIED INTO THIS MEANDER CORNER WITH LOTS 1-16 OF BLOCK 4.

IN 1991 KIM PRITZLAFF LOCATED IRON PIPE MONUMENTATION OF BOTH THE CONNORS PLAT AND THE LONG BEACH SUMMER RESORT PLAT. LOT LINE OCCUPATION COUPLED WITH MONUMENTS FOUND AT THE SOUTH QUARTER AND WEST SIXTEENTH CORNERS OF THE COMMON SECTION LINE PROVIDED THE LOCATION FOR THIS MEANDER CORNER. THE DISTANCE RECORDED ON THE CONNORS PLAT OF 818 FEET BETWEEN THE MEANDER CORNER AND SOUTH QUARTER CORNER OF SECTION 29 FIT WITHIN A HALF OF A FOOT BEING MEASURED AT 818.40 FT. BETWEEN THE TWO CORNER POSITIONS. USING THE SECTION LINE AS MONUMENTED FROM THE PLATS AND LOCAL LOT CORNER EVIDENCE, I RESET THE MEANDER CORNER AT RECORDED DISTANCES. In the plan view drawing below, provide reference ties to at least 4 witness monuments, or, if the location is within a municipality, to at least 2 witness monuments. (Witness monuments shall be made of concrete, natural stone, iron or other equally durable material, except wood other than bearing trees.) Also, show any material discrepancies between the corner restored or re-established and the location of any other previous corner location or occupation.



DOCUMENT NUMBER
143532

I, KIM H PRITZLAFF, RLS 1991
(Type or print name) certify that the corner location shown on this record was determined by me or under my direction and control and that this U.S. Public Land Survey Monument Record is correct and complete to the best of my knowledge and belief.

Kim H Pritzlaff
Signature

1991
Date

REGISTER'S OFFICE
Forest County, Wis.
Received for record this 300 day
JANUARY A.D., 1992 at
9:30 o'clock A.M. and recorded
in Vol. CORNER RESTORATIONS
page V-5,6
Paul Achenbacher
Register of Deeds

Certificate Ready for Filing:
Darrell E. Richards
Acting District Ranger

43515292028