

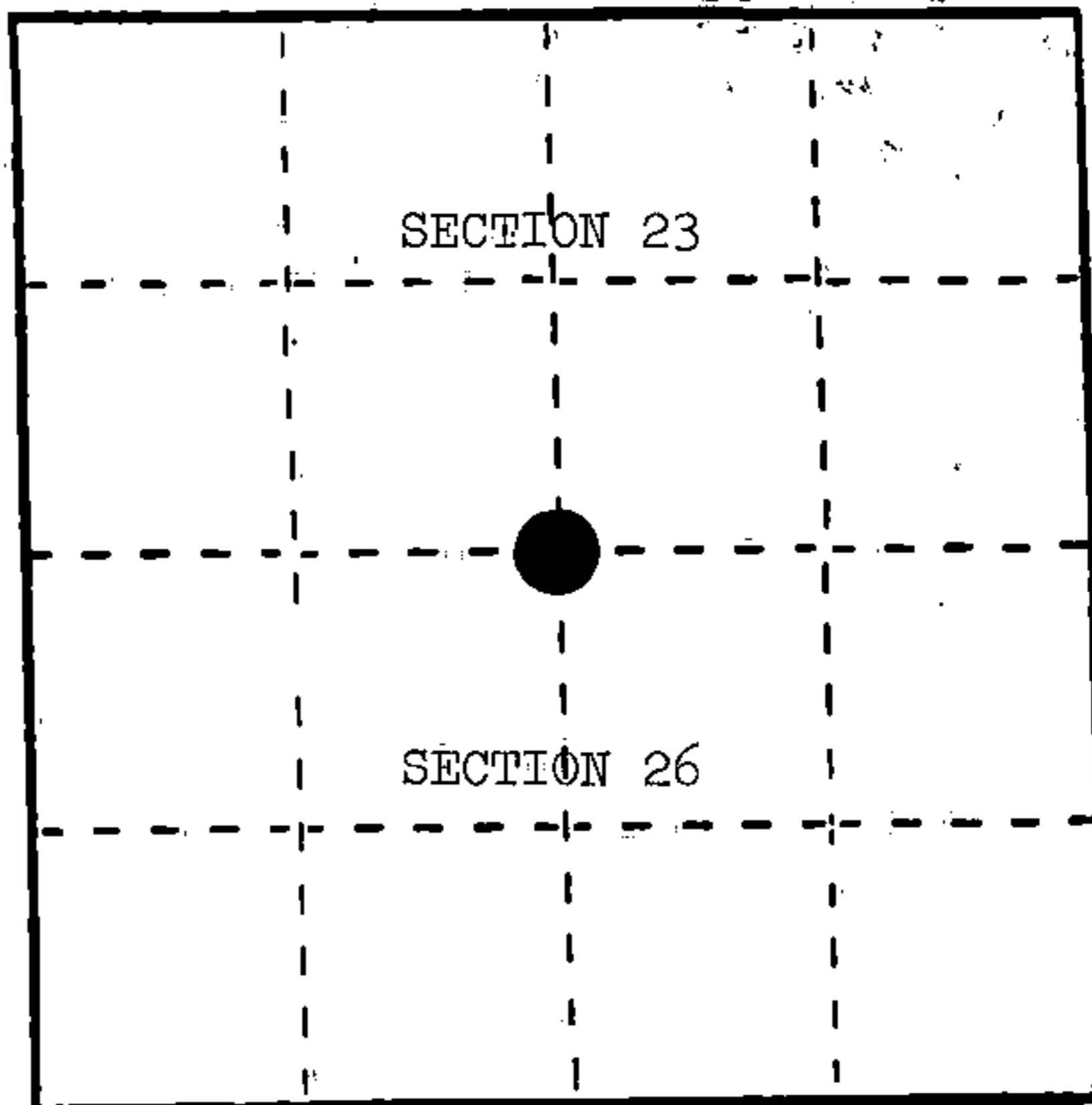
U. S. PUBLIC LAND SURVEY MONUMENT RECORD

INSTRUCTIONS: This record shall show the location of the corner and shall include all of the following nine elements (a through i).

(a) Identify the corner by reference to the U.S. public land survey system.

○ = Corner monument restored.

Quarter corner to Sections 23 and 26, T.35N., R.15E.



REGISTER'S OFFICE  
Forest County, Wis.

Received for record this 8<sup>th</sup> day  
of October, A.D., 1986 at  
1:25 o'clock P.M. and recorded  
in Vol. CORNER RESTORATIONS  
page R-19

*Paul Aschenbrenner*  
Register of Deeds

(b) Describe any record evidence, monument evidence, occupational evidence, testimonial evidence or any other material evidence you considered, and whether the monument was found or placed.

In 1859, James McBride set post with the following BTs: Birch, 18", S.03°W., 22 links; Hemlock, 16", N.49°E., 19 links.

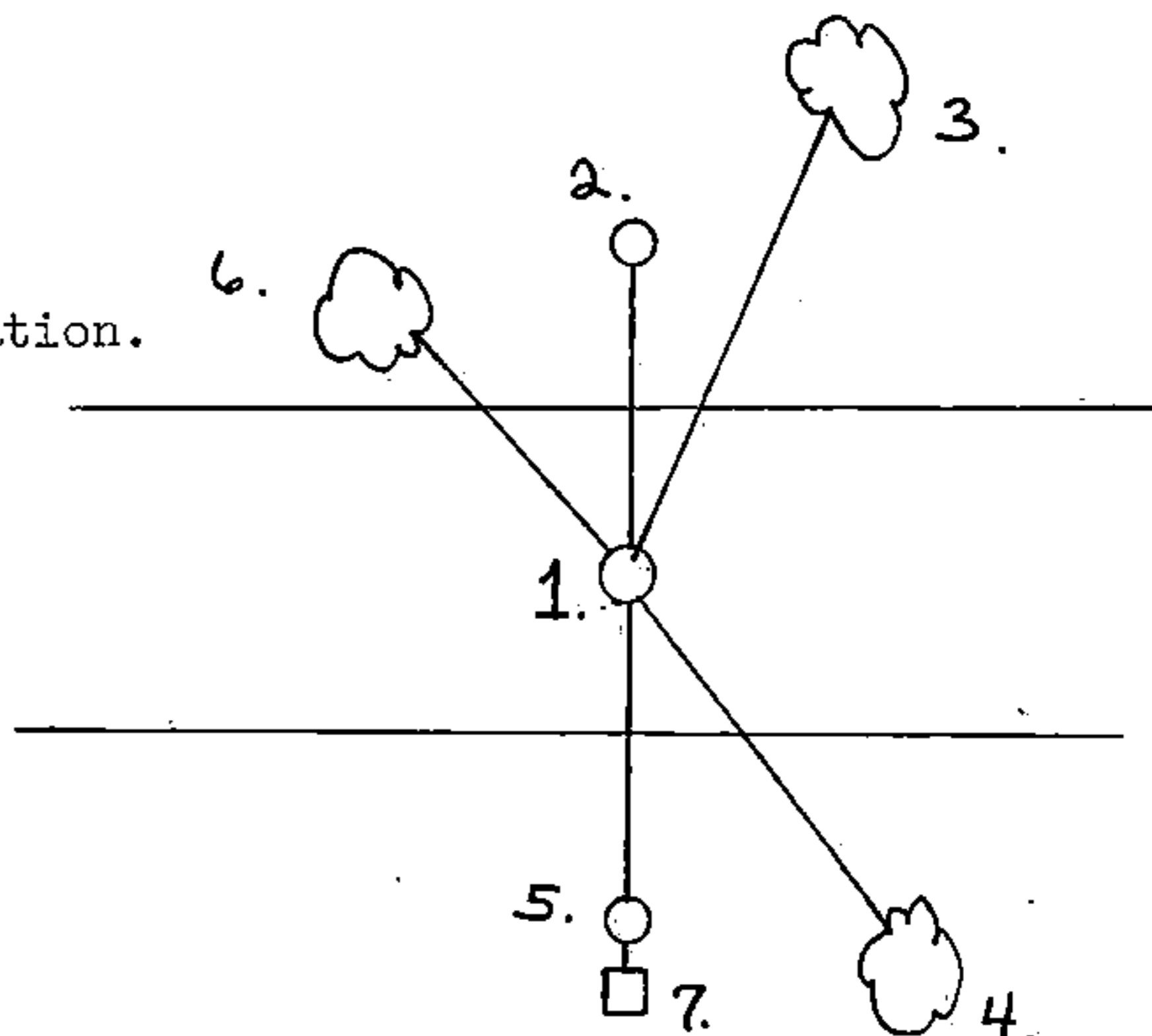
In 1965, Jean Resvick found an iron bar in mound of rock replacing witness post 33 feet north of centerline of road and a scribed post 33 feet south of centerline of road. He placed a 2" x 30" galvanized iron pipe 6" below surface of road in centerline and made the following references to it: Elm, 4", N.31°E., 28.78 feet; Yellow Birch, 3", S.28°E., 27.86 feet; Sugar, 5", N.45°W., 18.88 feet; 2" x 30" galvanized iron pipe, north, 33.0 feet; 2" x 60" galvanized iron pipe, south, 33.0 feet.

In 1986, Lee Scheuerman found the corner as per Resvick and made new references to it.

(c) In the plan view drawing below, provide reference ties to at least 4 witness monuments, or, if the location is within a municipality, to at least 2 witness monuments. (Witness monuments shall be made of concrete, natural stone, iron or other equally durable material.) Describe witness monuments.

(d) Show a plan view drawing depicting the relevant monuments and reference ties which is sufficient in detail to enable accurate relocation of the corner monument if the corner monument is disturbed. Indicate north.

1. 2" x 30" galvanized iron pipe 6" below surface of road, in centerline, marking the corner location.
2. 2" x 30" galvanized iron pipe, Witness Corner, North, 33.0 feet
3. Sugar, 6", N.13°E., 46.47 feet
4. Sugar, 3", S.35°E., 33.07 feet
5. 2" x 60" galvanized iron pipe, Witness Corner, South, 33.0 feet
6. Sugar, 8", N.42°W., 19.05 feet
7. Steel Sign Post, South, 33.7 feet



(e) Describe any material discrepancy between the location of the corner as restored or reestablished and the location of that corner as previously restored or reestablished by distance and direction. Show the discrepancy on the plan view drawing under (d), above. Show the distances between the corner as previously restored or reestablished and (1) the corner as restored or reestablished, and (2) to at least 2 of the witness monuments shown on the drawing in (d), above.

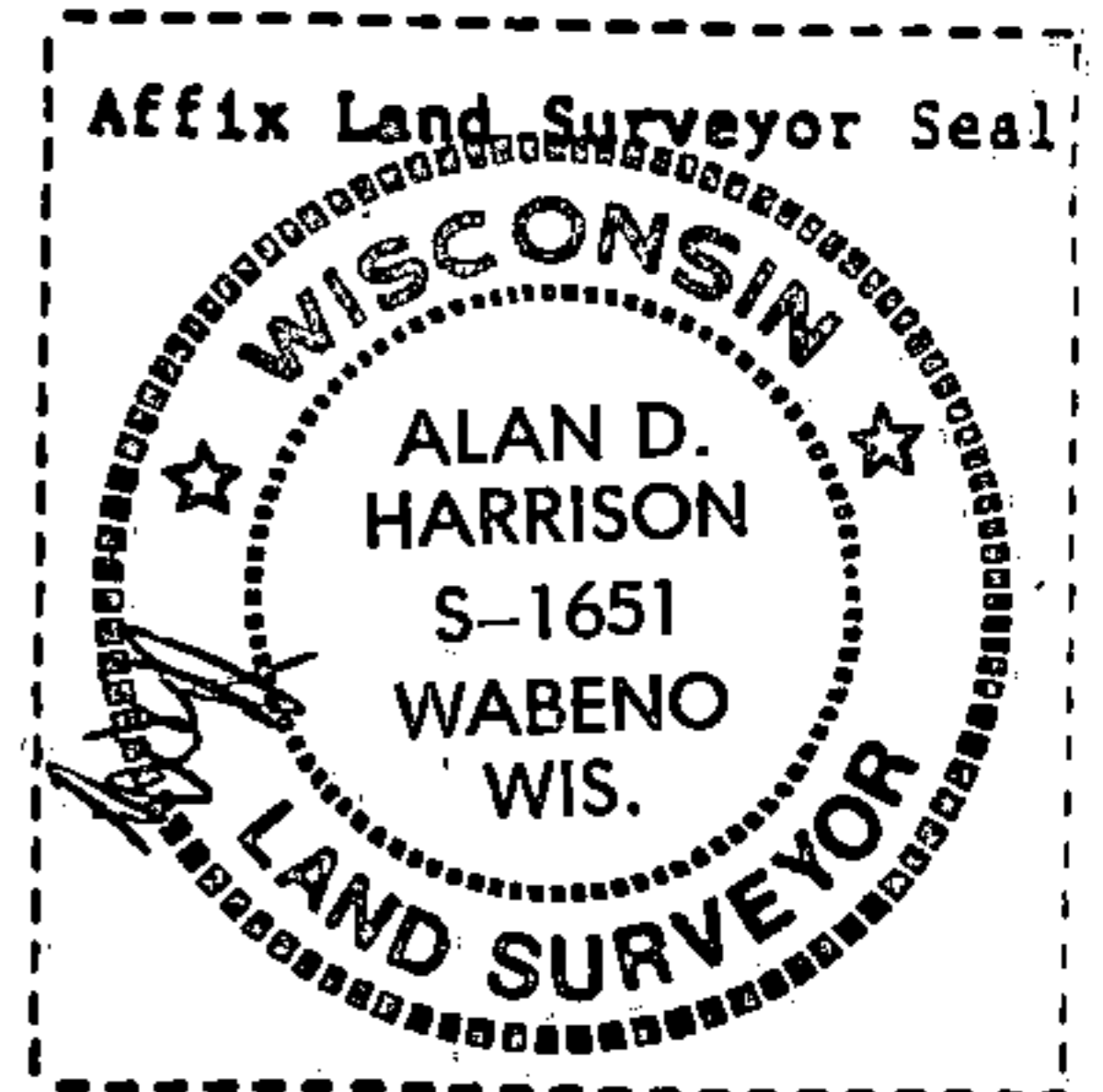
None.

(f) Was the corner restored through acceptance of (1) an obliterated evidence location, or, (2) a found perpetuated location?

(2) a found perpetuated location.

(g&h) Was the corner reestablished through lost corner proportionate methods? If so, show the method, including the directions and distances to other public land survey corners used as evidence or used for proportioning in determining the corner location?

No.



(1) I, Alan D. Harrison  
(type or print name) certify that the corner location shown on this record was determined by me or under my direction and control and that this U.S. Public Land Survey Monument Record is correct and complete to the best of my knowledge and belief.

Alan D. Harrison  
Signature

9/11/86  
Date

Received for record this 18<sup>th</sup> day  
of November A.D., 2005 at  
3:55 o'clock P.M. and recorded  
in Vol. Corner Restoration  
page A-19.

Kay Swanson, Deputy  
Register of Deeds

Document Number

189305

### U.S. PUBLIC LAND SURVEY MONUMENT RECORD

(AS REQUIRED BY S. A-E 5.02, WI ADM. CODE)

HISTORY OF ORIGINAL CORNER ESTABLISHMENT AND SUBSEQUENT RESTORATIONS AND DESCRIPTION OF ANY RECORD, MONUMENT, OCCUPATIONAL, TESTIMONIAL, OR OTHER EVIDENCE CONSIDERED:

1859 - JAMES McBRIDE, SURVEYOR, SET POST

SET THE FOLLOWING WITNESSES:  
BIRCH 18" S03°W 22 LINKS, (14.52 FEET)  
HEMLOCK 16" N49°E 19 LINKS, (12.54 FEET)

1909 - J. MELENDY, FOUND WOOD POST, ORIGINAL BIRCH BT AND HEMLOCK STUMP. SET A 4" X 4" X 48" WOOD POST AND MADE AN "X" ON A 4' X 4' X 2' ABOVE GROUND ROCK, N35°W, 75.25 LINKS, (49.67 FEET).

SET THE FOLLOWING WITNESSES:  
MAPLE 10" N51-3/4°E 27.5 LINKS, 18.15 FEET

1965 - J. RESVICK, SURVEYOR, S-802, FOUND AN IRON ROD IN A MOUND OF ROCKS REPLACING WITNESS POST SCRIBED 50 LINKS WITH FOREST TAG ON IT, AND 50 LINKS SOUTH OF ROAD FOUND A WOOD POST SCRIBED 50 LINKS.

1990 - ALAN HARRISON, SURVEYOR, S-1651, FOUND MELENDY'S "X" ON ROCK. MOVED RESVICK'S CORNER WHICH IS NO LONGER ACCEPTABLE. ADDED TWO NEW BT'S AND MOVED THE TWO WITNESS CORNERS.

FOUND THE FOLLOWING WITNESSES:  
MELENDY'S ROCK N35°W 49.67 FEET

SET THE FOLLOWING WITNESSES:  
SUGAR MAPLE 4" S02°E 30.75 FEET  
SUGAR MAPLE 10" N76°W 32.72 FEET  
WIT. MON. SOUTH 33 FEET  
WIT. MON. NORTH 33 FEET

CORNER WAS: (CHECK ALL THAT APPLY)

- RESTORED THROUGH ACCEPTANCE OF AN OBLITERATED LOCATION
- RESTORED THROUGH ACCEPTANCE OF A FOUND PERPETUATED LOCATION
- CONSIDERED A LOST CORNER AND REESTABLISHED THROUGH LOST CORNER PROPORTIONATE METHODS (INCLUDING A PLAN VIEW DRAWING SHOWING DISTANCES AND DIRECTIONS TO OTHER PUBLIC LAND SURVEY CORNERS USED FOR PROPORTIONING AND DETERMINING THE CORNER LOCATION)
- RESTORED OF REESTABLISHED IN A LOCATION THAT DIFFERS FROM A PREVIOUS RESTORATION OF REESTABLISHMENT (INCLUDE A PLAN VIEW DRAWING AND INDICATE WHAT WAS SET AND/OR FOUND)

DESCRIBE THE MONUMENT AND ACCESSORIES USED TO PERPETUATE THE LOCATION OF THIS CORNER. (INCLUDE A PLAN VIEW DRAWING AND INDICATE WHAT WAS SET AND/OR FOUND)

FOUND "X" CHISELED ON 6' DIA. ROCK

FOUND THE FOLLOWING WITNESSES:

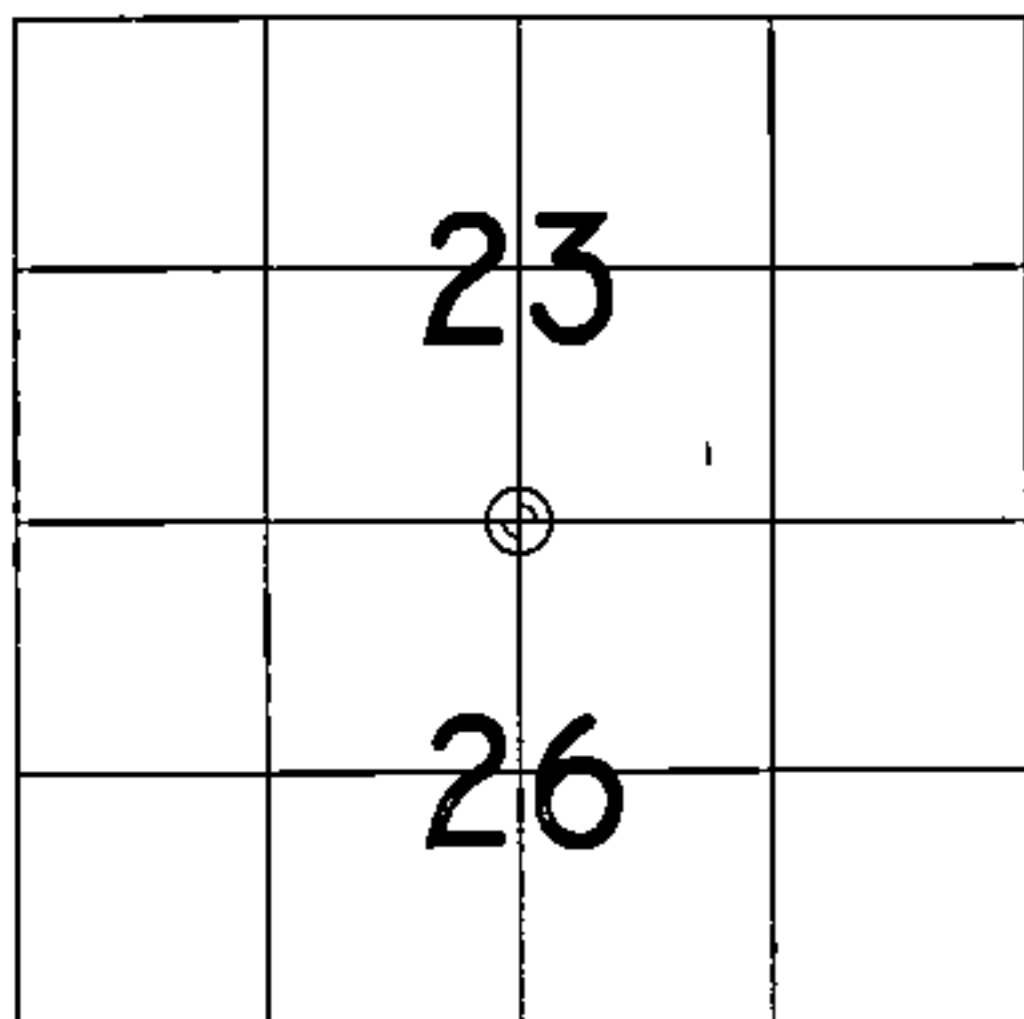
SUGAR MAPLE 12" N74°45'56"W 32.90' FEET  
WIT. MON. S01°51'59"W 32.79' FEET  
WIT. MON. N01°15'01"E 32.87' FEET

SET THE FOLLOWING WITNESSES:

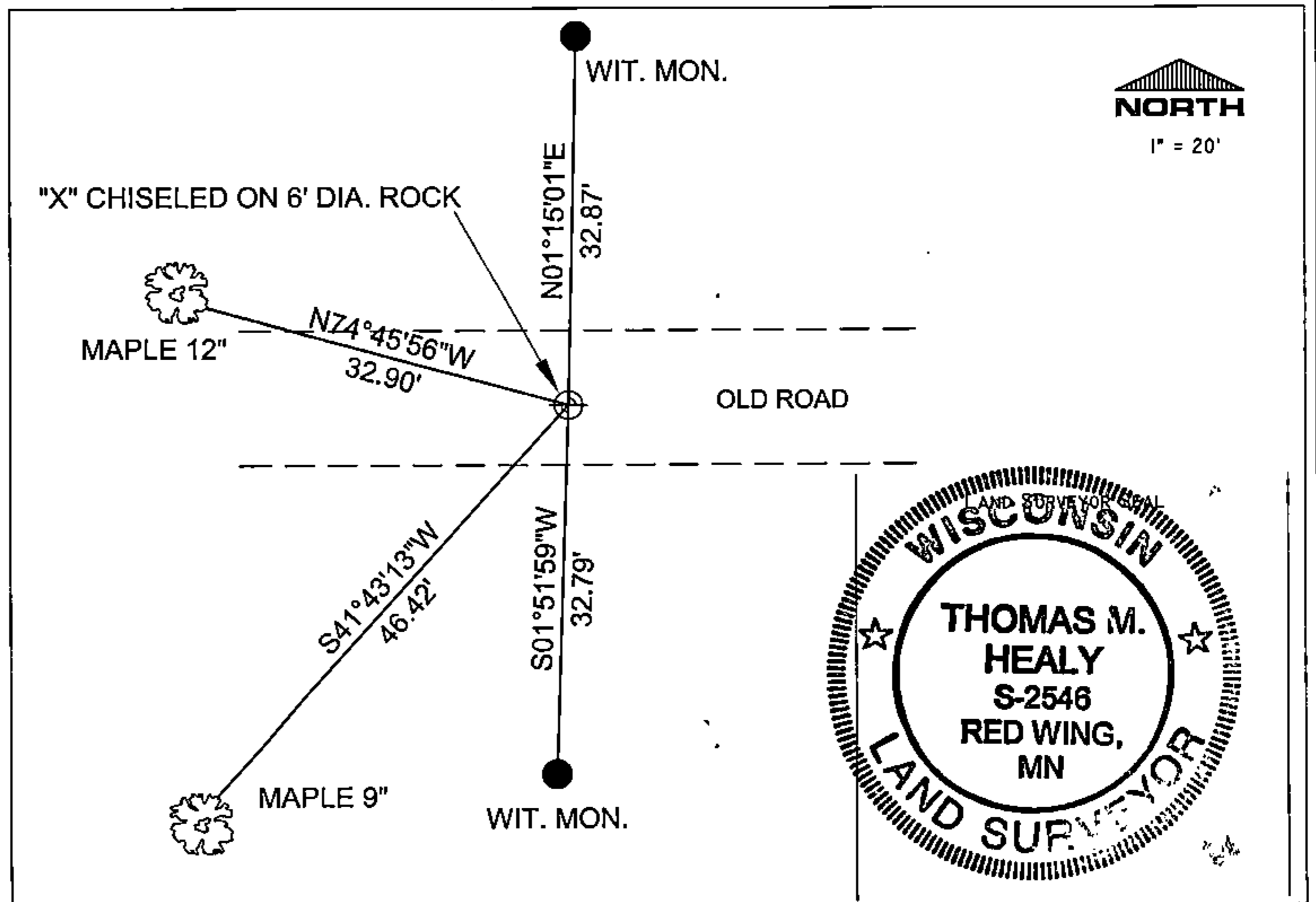
MAPLE 9" S41°43'13"W 46.42 FEET

ALL TREES HAVE CHEST & STUMP BLAZES.

THE SOUTH 1/4  
CORNER OF SECTION 23,  
T. 35 N., R. 15 E.,  
FOREST COUNTY, WISCONSIN



⊕ = LOCATION OF CORNER



I, THOMAS M. HEALY R.L.S. 2546

(TYPE OR PRINT NAME) CERTIFY THAT THE CORNER LOCATION SHOWN ON THIS ABOVE RECORD WAS DETERMINED BY ME OR UNDER MY DIRECTION AND CONTROL AND THAT THIS U.S. PUBLIC LAND SURVEY MONUMENT RECORD IS CORRECT AND COMPLETE TO THE BEST OF MY KNOWLEDGE AND BELIEF.

INDEX No. R-19

Th M. Healy 11-17-05  
SIGNATURE DATE

4351323 0020

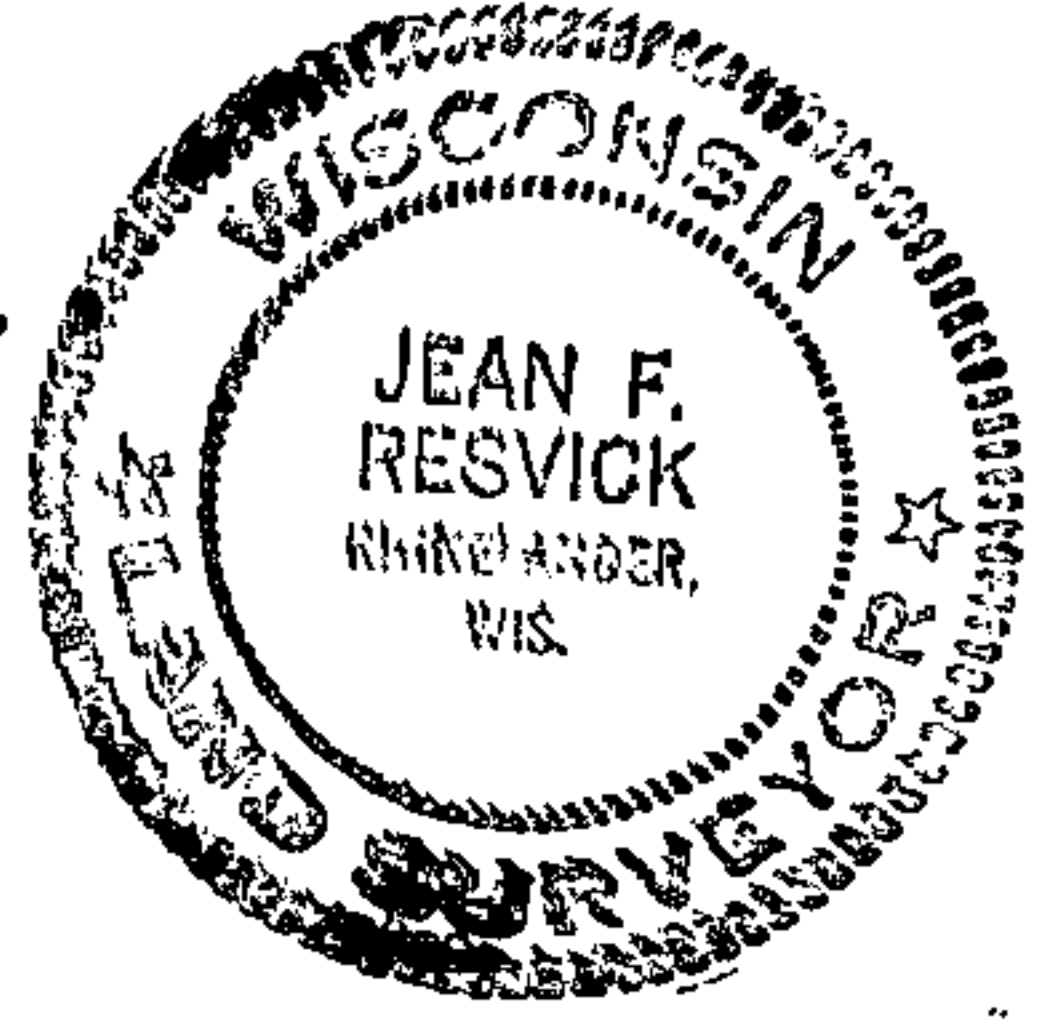
R-19

CERTIFIED LAND CORNER RESTORATION

State of Wisconsin }  
County of Forest } ss.

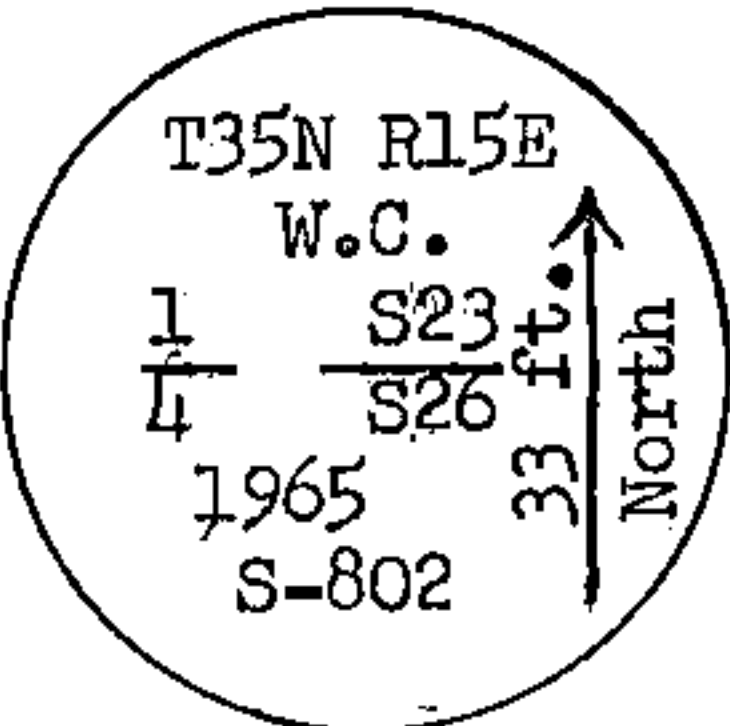
I Jean F. Resvick, do hereby certify that on the 23rd day of June, 1965, I found evidence of the North quarter corner of Section 26 Township 35 North, Range 15 East, Fourth Principal Meridian, as described hereon; and that from this evidence I established a new monument and accessories as described hereon to perpetuate the original location of this corner:

Description of original monument and accessories and subsequent restorations:  
Survey in 1859 by James McBride  
40.00 chains West corrected between Sections 23 and 26 Set wood post.  
Birch 18", S.3°W., 22 lks.  
Hemlock 16", N.49°E., 19 lks.

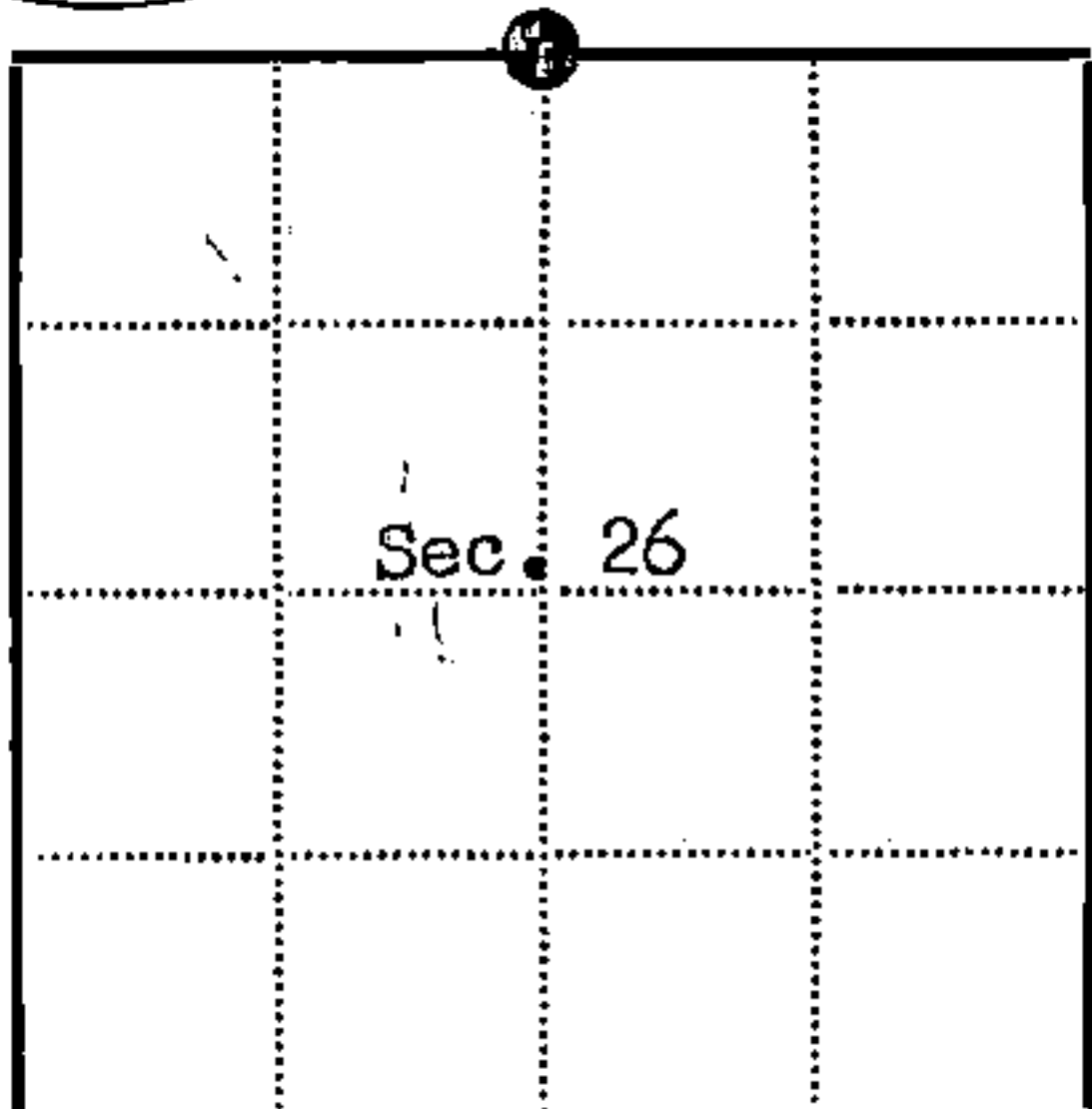


Description of corner evidence found:  
Iron bar in mound of rock replacing witness post scribed 50 LN, with Forest Service poster on post dated 1935. Point of post found along side of bar. 66 feet South of iron bar and 33 feet south of road found post scribed 50 LS.  
Corner and bearing trees would fall in East West road.  
The two witness posts found and the East West road is accepted as being references to the original corner.

Description of monument and accessories I established to perpetuate the original location of this corner:  
From the two witness posts found, I set a 2 in. inside diam., galvanized, iron pipe, 30 inches long and 6 ins. below the surface of the road and 33 ft. from each witness post, for the quarter corner between Sec. 23 and 26. From which the following blazed and scribed bearing trees bear.  
Elm 4", N.31°E., 28.78 ft. or 43.61 lks.  
Y. Birch 3", S.28°E., 27.86 ft. or 42.21 lks.  
Sugar 5", N.45°W., 18.88 ft. or 28.61 lks.



I replaced North witness post with 2 in. inside diam., galvanized iron pipe, 30 ins. long, 6 ins. above ground and 33 feet north of quarter corner in road. I replaced south witness post with 2 in. inside diam., galvanized iron pipe, 5 feet long, filled with concrete, flanged at bottom, 18 ins. above ground, and 33 ft. south of quarter corner in road, with brass cap marked:



● = Corner monument restored  
□ =

Resident witnesses.....  
Dated at Rhinelander Wisconsin, this 3rd day of Sept. 1965.  
Signature Jean F. Resvick Title Cadastral Surveyor  
(County Surveyor, Registered Land Surveyor, or other duly authorized official)  
Surveyors Registration No. S-802 90970

Office of Register of Deeds County of Forest  
I hereby certify that the within instrument was filed in this office for record on the 17 day of December 1965, and was filed in Book No. 1 Page No. of County Records at 4:00 P.M.  
Signature Anna Peterson Title Register of Deeds

Township 35 North, Range 15 East, Section 26, Index No. R-19, Page No.

R19

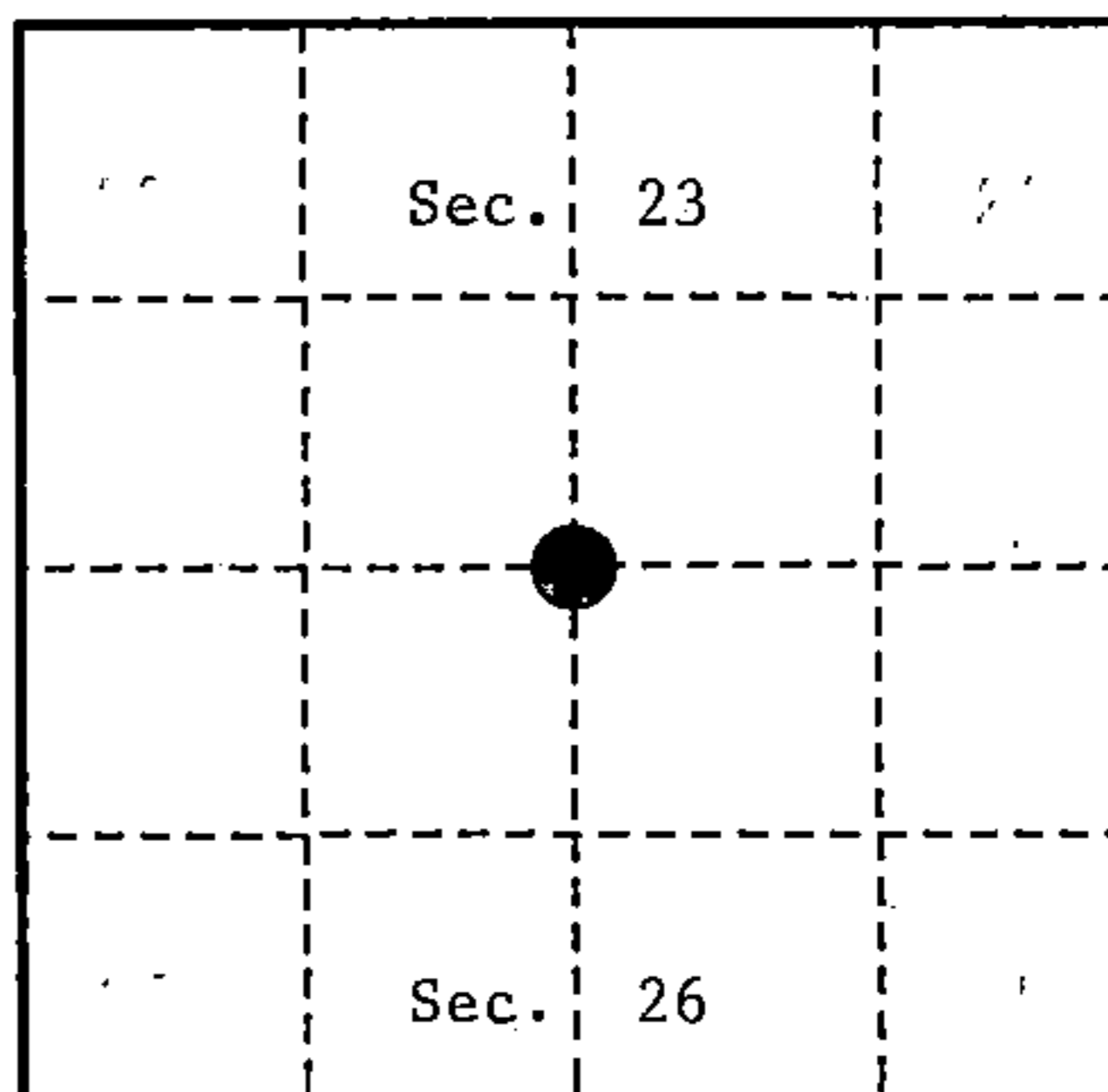
U. S. PUBLIC LAND SURVEY MONUMENT RECORD

INSTRUCTIONS:

This record shall show the location of the corner and shall include all of the following nine elements (a through i).

- (a) Identify the corner by reference to the U.S. public land survey system.
- = Corner monument restored.

Quarter Corner to Sections 23-26, T.35N., R.15E., Forest County, Wisconsin.



- (b) Describe any record evidence; monument evidence, occupational evidence, testimonial evidence or any other material evidence you considered, and whether the monument was found or placed.

In 1859, James McBride set a wood post with the following B.T.'s: Birch, 18", S.03°W., 22 links (14.52 feet); Hemlock, 16", N.49°E., 19 links (12.54 feet).

In 1909, J. Melendy found wood post, original Birch B.T. and Hemlock stump. Set 4" x 4" x 48" wood post and made an "X" on a 4' x 4' x 2' above ground rock, N.35°W., 75.25 links (49.665 feet); new B.T.'s: Maple, 10", N.51 3/4°E., 27.5 links (18.15 feet).

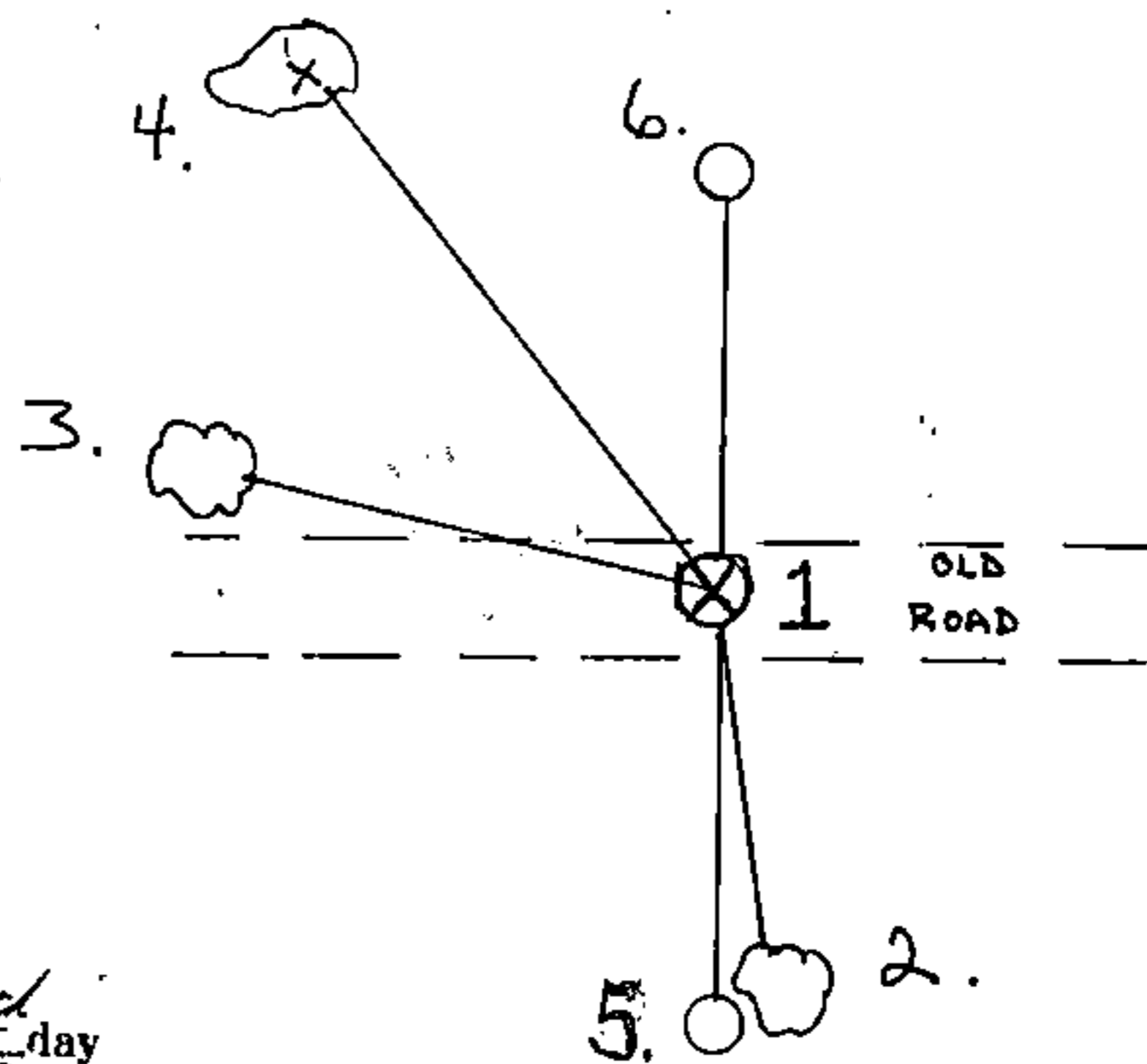
In 1965, J. Resvick, R.L.S., found an iron rod in mound of rocks replacing witness post scribed 50 links with Forest tag on it, and 50 links South of road found a wood post scribed 50 links.

In 1990, Alan Harrison, R.L.S., found Melendy's "X" on rock. Moved Resvick's corner which is no longer acceptable. Added 2 new B.T.'s and moved the two witness corners.

- (c) In the plan view drawing below, provide reference ties to at least 4 witness monuments, or, if the location is within a municipality, to at least 2 witness monuments. (witness monuments shall be made of concrete, natural stone, iron or other equally durable material.)

- (d) Show a plan view drawing depicting the relevant monuments and reference ties which is sufficient in detail to enable accurate relocation of the corner monument if the corner monument is disturbed. Indicate north.

1. "X" chiselled on a 6 foot diameter rock.
2. Sugar, 4", S.02°E., 30.75 feet.
3. Sugar, 10", N.76°W., 32.72 feet.
4. Melendy's rock, N.35°W., 49.67 feet.
5. Witness Monument, 2 1/2" x 36", South, 33 feet.
6. Witness Monument, 2 1/2" x 36", North, 33 feet.



REGISTER'S OFFICE  
 Forest County, Wis.  
 Received for record this 19th day  
 of September A.D., 1990 at  
3:15 o'clock P.M. and recorded  
 in Vol. CORNER RESTORATIONS  
 page 2-19  
*Paul Hecla*  
 Register of Deeds

(e) Describe any material discrepancy between the location of the corner as restored or reestablished and the location of that corner as previously restored or reestablished by distance and direction. Show the discrepancy on the plan view drawing under (d), above. Show the distances between the corner as previously restored or reestablished and (1) the corner as restored or reestablished, and (2) to at least 2 of the witness monuments shown on the drawing in (d), above.

Previous monument location of Resvick's bears S.75°W., 19.06 feet from new location.

(f) Was the corner restored through acceptance of (1) an obliterated evidence location, or, (2) a found perpetuated location?

(2) a found perpetuated location.

(g & h) Was the corner reestablished through lost corner proportionate methods? If so, show the method, including the directions and distances to other public land survey corners used as evidence or used for proportioning in determining the corner location?

No.

(1) I, Alan D. Harrison

(type or print name) certify that the corner location shown on this record was determined by me or under my direction and control and that this U.S. Public Land Survey Monument Record is correct and complete to the best of my knowledge and belief.

Alan D. Harrison 9/18/90  
Signature Date

CERTIFICATE READY FOR FILING:

Dale D. Staeger  
District Ranger

