

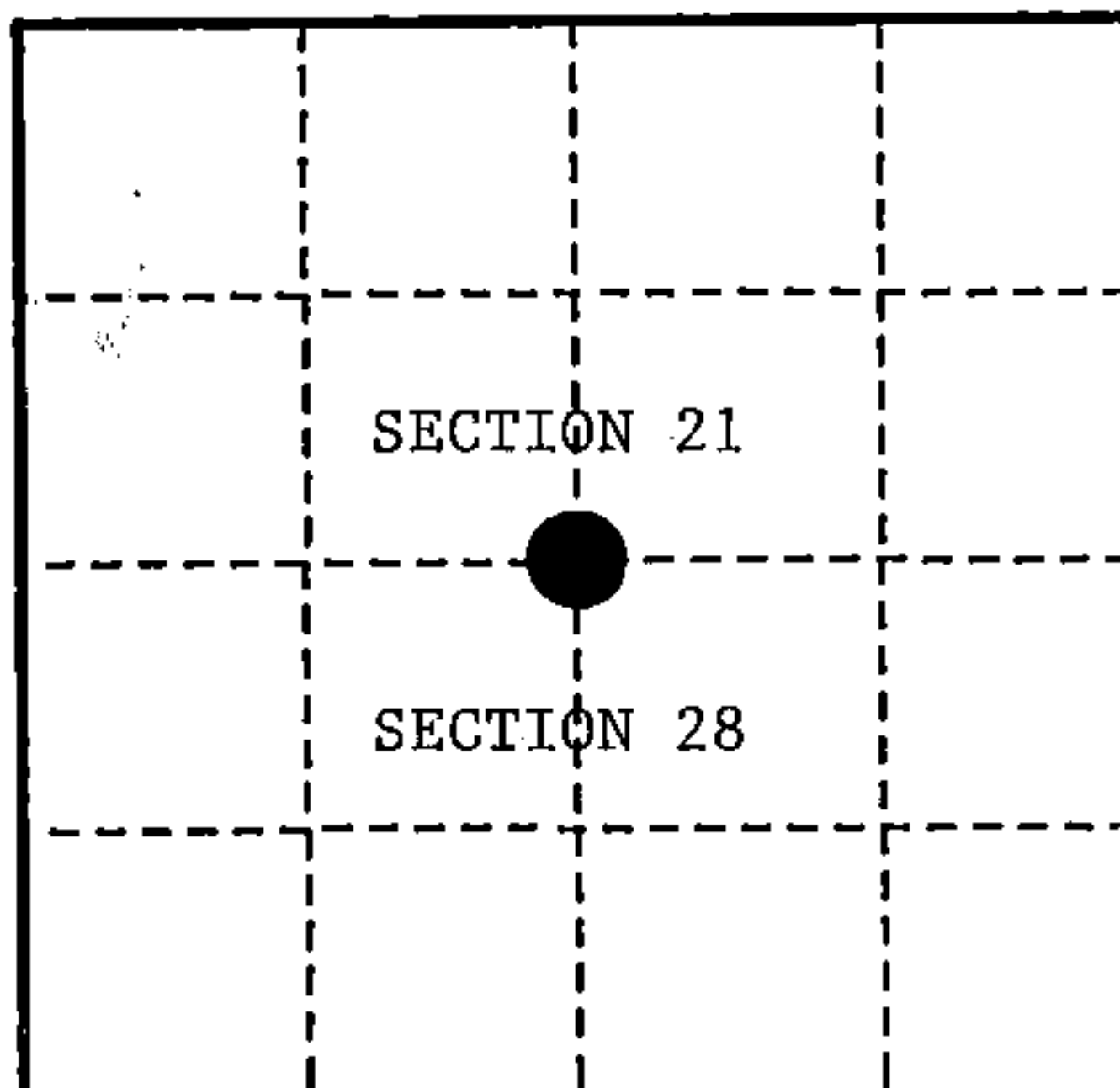
U. S. PUBLIC LAND SURVEY MONUMENT RECORD

INSTRUCTIONS:

This record shall show the location of the corner and shall include all of the following nine elements (a through i).

- (a) Identify the corner by reference to the U.S. public land survey system.
- - Corner monument restored.

QUARTER CORNER COMMON TO SECTIONS 21 AND 28, T.35 N., R.15 E., FOREST COUNTY, WISCONSIN.



- (b) Describe any record evidence, monument evidence, occupational evidence, testimonial evidence or any other material evidence you considered, and whether the monument was found or placed.

IN 1859 JAMES McBRIDE SET 1/4 CORNER POST AND MADE THE FOLLOWING REFERENCES: BIRCH 20" S.34°W. 16 LINKS (10.56'); HEMLOCK 16" N.31°E. 25 LINKS (16.50').

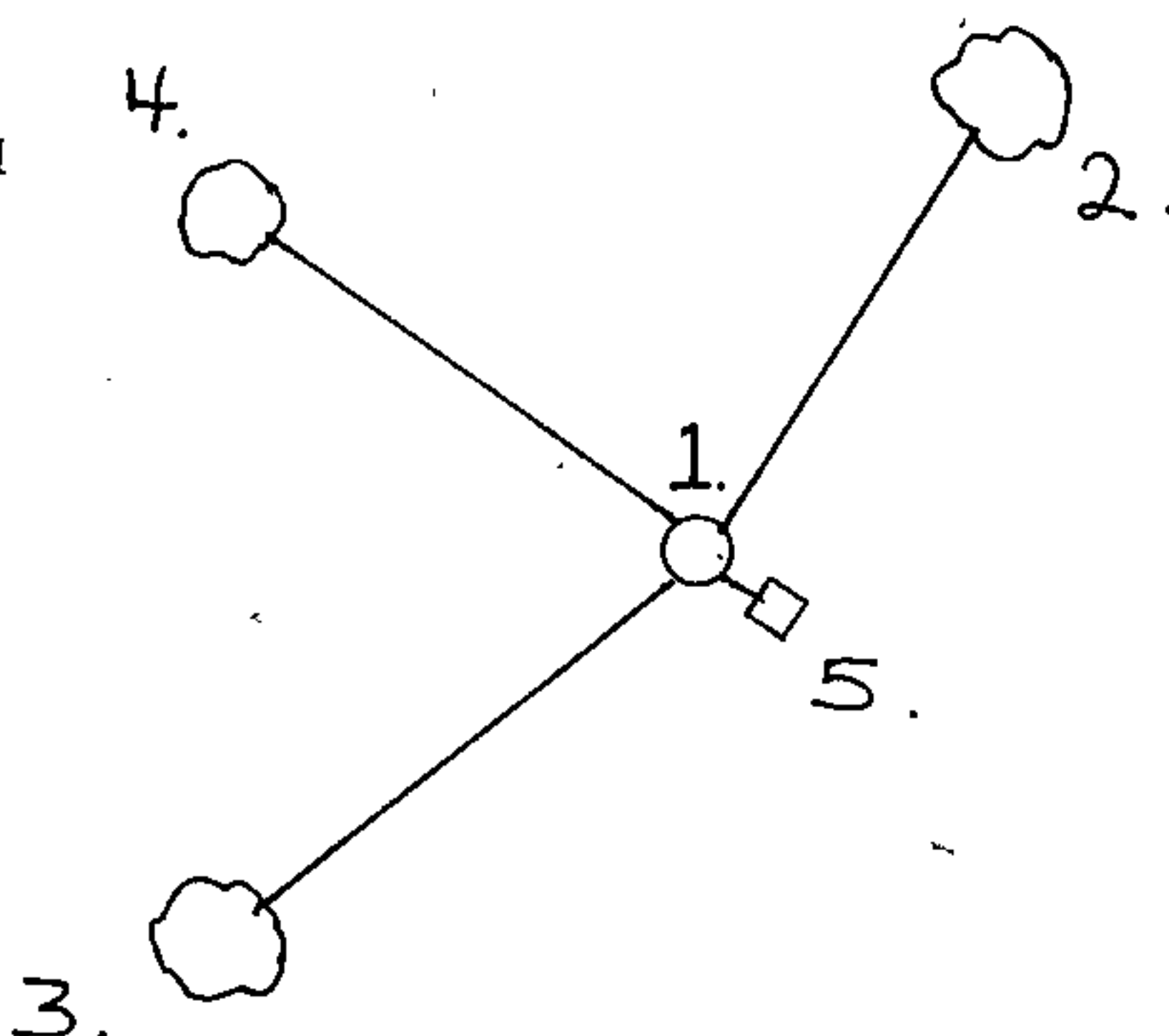
IN 1909 JOHN MELENDY FOUND ORIGINAL BIRCH STUB, 24", WITH MARKS PLAIN AND ORIGINAL HEMLOCK STUB WITH MARKS BURNT OFF. SET NEW ELM POST, 5"X5"X48", AND MADE NEW REFERENCES: MAPLE 20" N.86 3/4°E. 69 1/2 LINKS (45.70'); BIRCH 10" N.24 1/3°W. 62 7/8 LINKS (41.50').

IN 1992 ALAN HARRISON, R.L.S., FOUND OLD SQUARED POST IN MOUND OF ROCK. NO EVIDENCE OF ORIGINAL B.T.'s. MELEMDY'S B.T.'S ARE NOW STUMP HOLES. EAST AND WEST POSITION FITS MELEMDY'S MEASUREMENTS WITHIN 5'.

- (c) In the plan view drawing below, provide reference ties to at least 4 witness monuments, or, if the location is within a municipality, to at least 2 witness monuments. (witness monuments shall be made of concrete, natural stone, iron or other equally durable material.)

- (d) Show a plan view drawing depicting the relevant monuments and reference ties which is sufficient in detail to enable accurate relocation of the corner monument if the corner monument is disturbed. Indicate north.

1. 2 1/2" X 36" ALUMINUM MONUMENT STAMPED WITH CORNER LOCATION IDENTIFIED.
2. SUGAR 12" N.34°E. 23.62 FEET
3. SUGAR 10" S.48°W. 29.38 FEET
4. SUGAR 6" N.56°W. 22.53 FEET
5. STEEL SIGN POST S.E. 1.72 FEET



REGISTER'S OFFICE
Forest County, Wis.

Received for record this 16th day
of MARCH A.D., 1993 at
1:15 o'clock P.M. and recorded
in Vol. CORNER RESTORATIONS
page R-11.

Paul Hochenbrunner
Register of Deeds

R-11

(a) Describe any material discrepancy between the location of the corner as restored or reestablished and the location of that corner as previously restored or reestablished by distance and direction. Show the discrepancy on the plan view drawing under (d), above. Show the distances between the corner as previously restored or reestablished and (1) the corner as restored or reestablished, and (2) to at least 2 of the witness monuments shown on the drawing in (d), above.

NONE

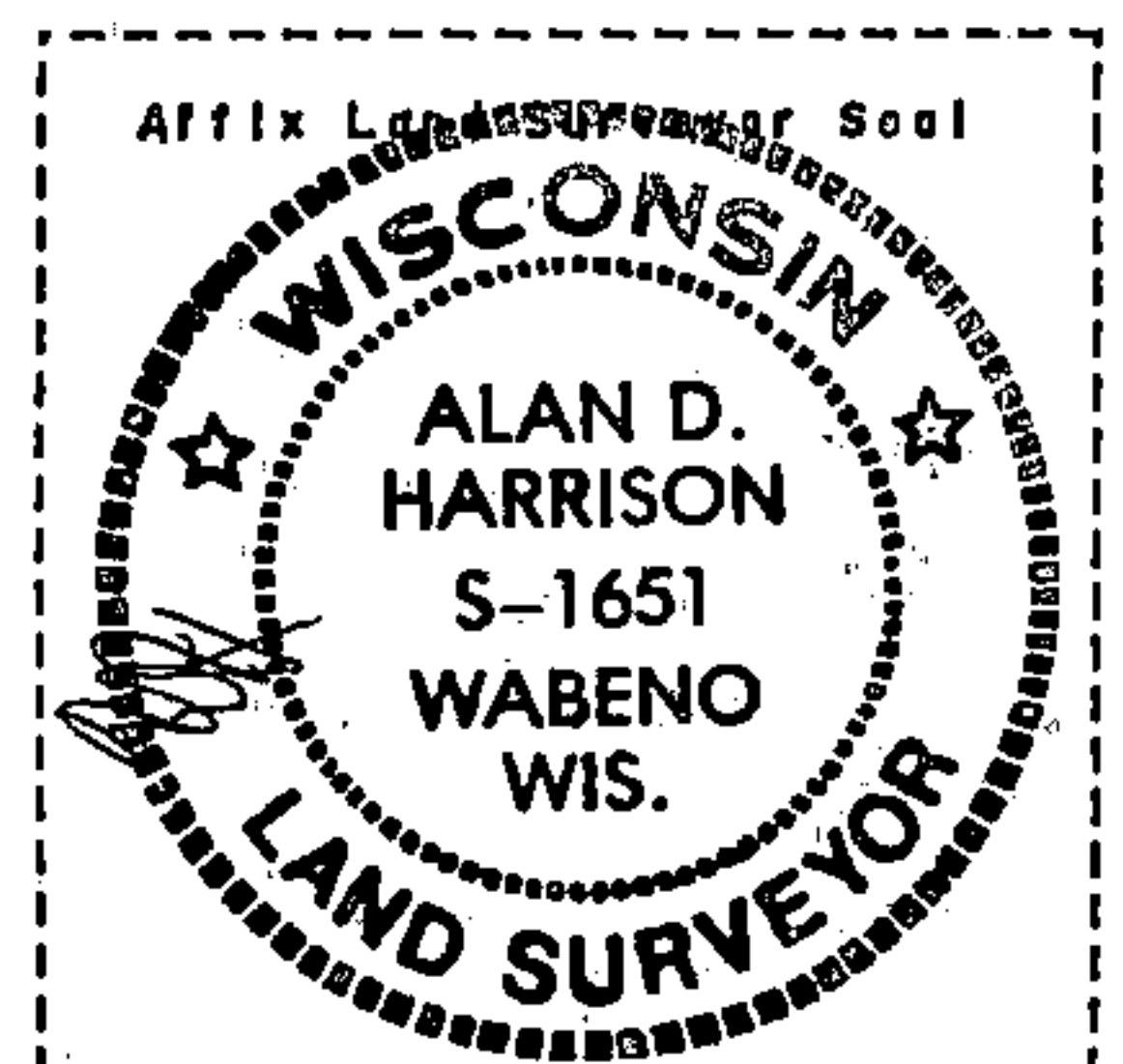
(f) Was the corner restored through acceptance of (1) an obliterated evidence location, or, (2) a found perpetuated location?

(2) A FOUND PERPETUATED LOCATION

(g & h) Was the corner reestablished through lost corner proportionate methods? If so, show the method, including the directions and distances to other public land survey corners used as evidence or used for proportioning in determining the corner location?

NO

(1) I, ALAN D. HARRISON
(type or print name) certify that the corner location shown on this record was determined by me or under my direction and control and that this U.S. Public Land Survey Monument Record is correct and complete to the best of my knowledge and belief.



Alan D. Harrison

3/16/93

Signature

Date

CERTIFICATE READY FOR FILING:

Darrell E. Richards
Acting District Ranger

U.S. PUBLIC LAND SURVEY MONUMENT RECORD

(As Required By s. A-E 5.02, WI Adm. Code)

History of original corner establishment and subsequent restorations and description of any record, monument, occupational, testimonial or other evidence considered:

- 1859--ORIGINAL SURVEY BY JAMES McBRIDE, SET 1/4 POST.
1909--JOHN MELENDY, FOUND EVIDENCE OF ORIGINAL B.Ts., SET ELM POST WITH NEW B.Ts.
1992--ALAN HARRISON R.L.S.# S-1651 (U.S.F.S.) FOUND OLD SQUARED POST & B.T. STUMP HOLES WHICH FIT MELENDY'S TIES. HARRISON SET A 2 1/2" X 36" ALUMINUM AT 1/4 CORNER B.Ts AS FOLLOWS: SUG.12'N.34°E. 23.62FT., SUG. 10" S.48° W. 29.38FT., SUG. 6" N.56° W. 22.53FT., STEEL SIGN POST-S.E. 1.72FT., RESTORATION SHEET FILED AT FOREST COUNTY.
1996-WAYNE G. DOBBRATZ R.L.S. #S-973, FOUND MONUMENT & B.Ts AS PER HARRISON'S RESTORATION.
1996- WAYNE G. DOBBRATZ CONTRACTED BY POTAWATOMI COMM. TO SET NEW WITNESS POINTS.

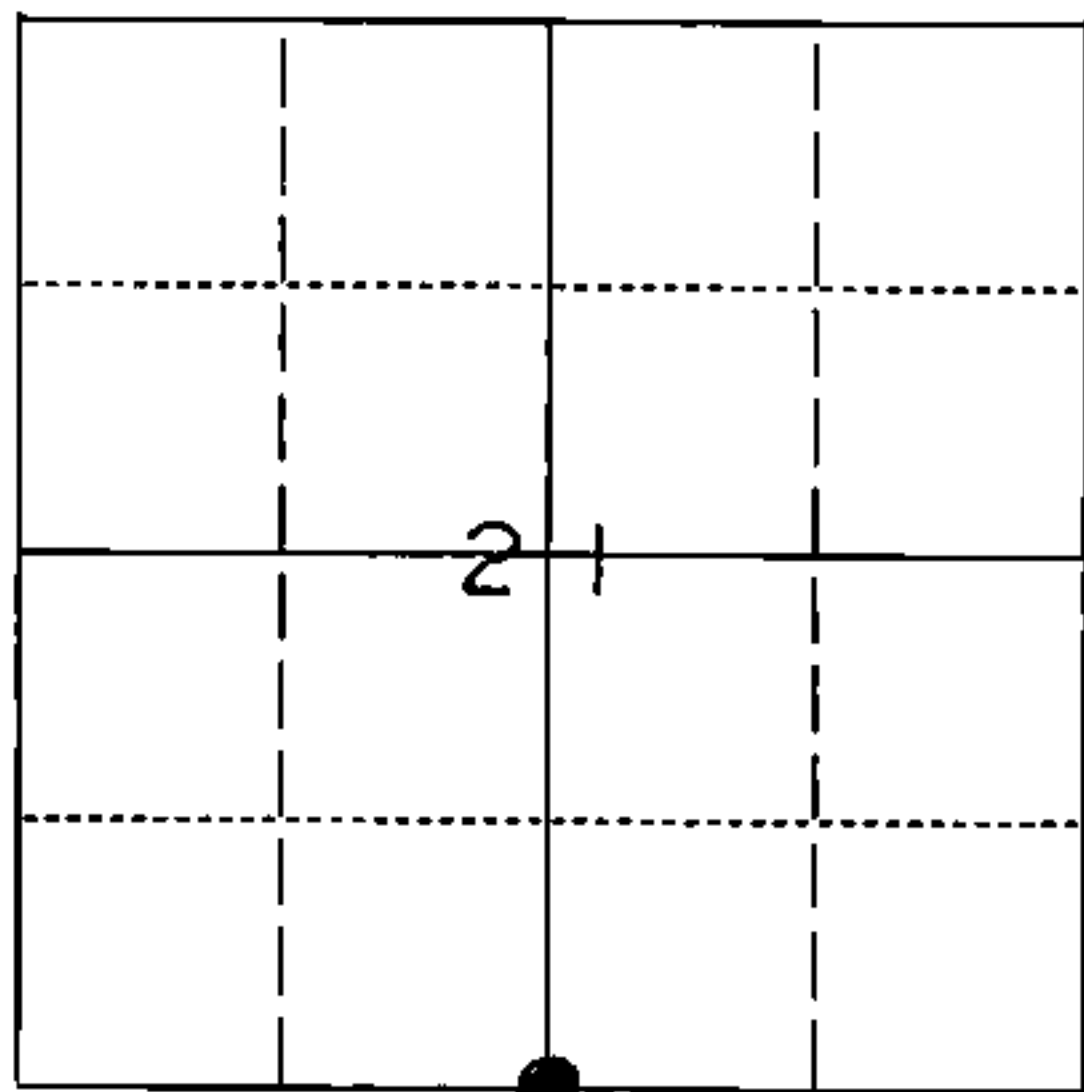
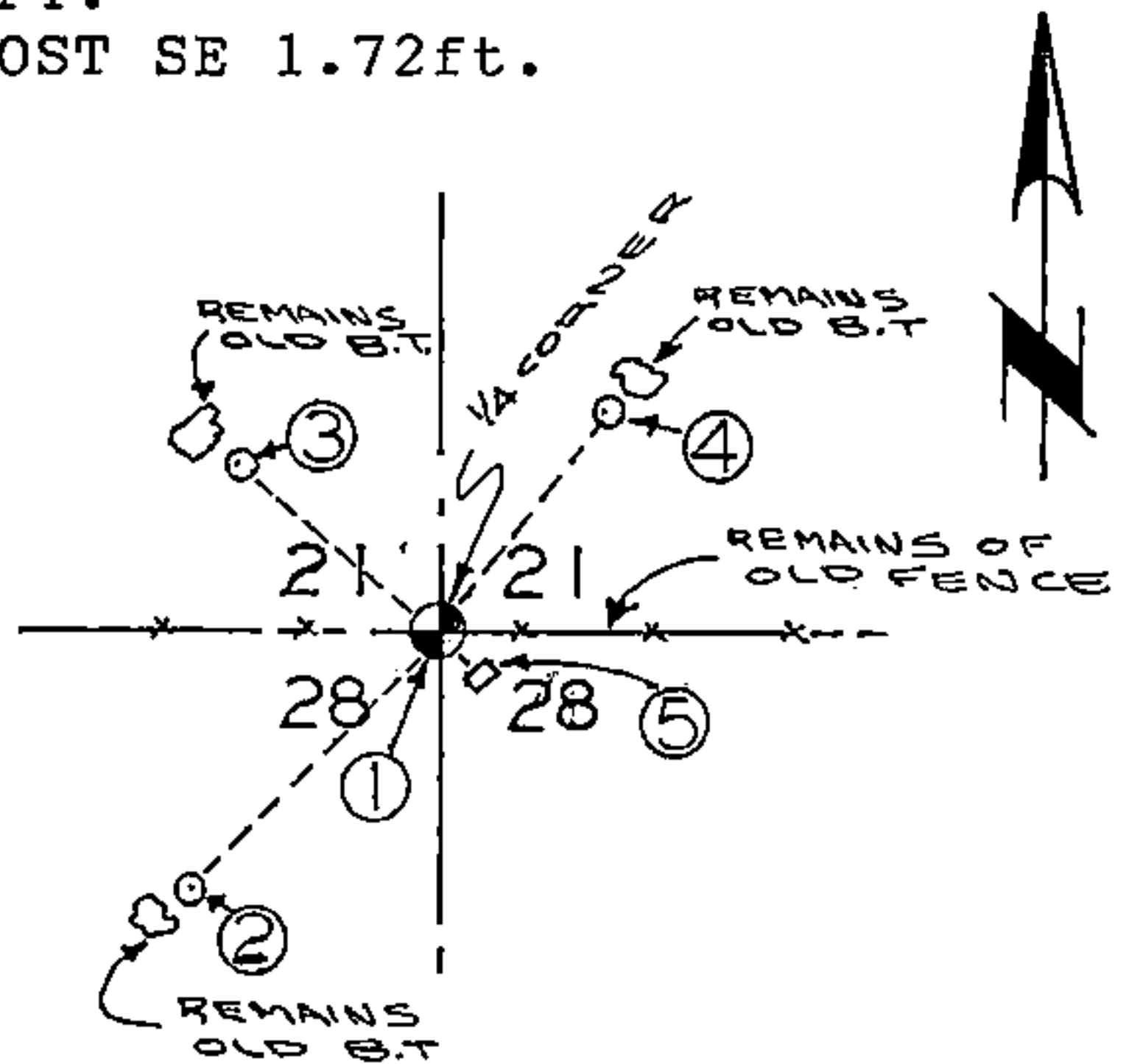
Corner was: (Check All That Apply)

- Restored through acceptance of an obliterated evidence location
[X] Restored through acceptance of a found perpetuated location
Considered a lost corner and reestablished through lost corner proportionate methods (include a plan view drawing showing distances and directions to other Public Land Survey Corners used for proportioning and determining the corner location)
Restored or reestablished in a location that differs from a previous restoration or reestablishment (include a plan view drawing and indicate what was set and/or found)

Describe the monument and accessories used to perpetuate the location of this corner. (include a plan view drawing and indicate what was set and/or found)

- WITNESS
1 FOUND 2 1/2" DIA. ALUMINUM MONUMENT AT 1/4 CORNER.
2 DROVE A 1" X 24" IRON PIPE S.48° W. 27.01FT.
3 DROVE A 1" X 24" IRON PIPE N.56° W. 19.64FT.
4 DROVE A 1" X 24" IRON PIPE N.34° E. 20.67FT.
5 FOUND A U.S. FOREST SERVICE METAL SIGN POST SE 1.72ft.

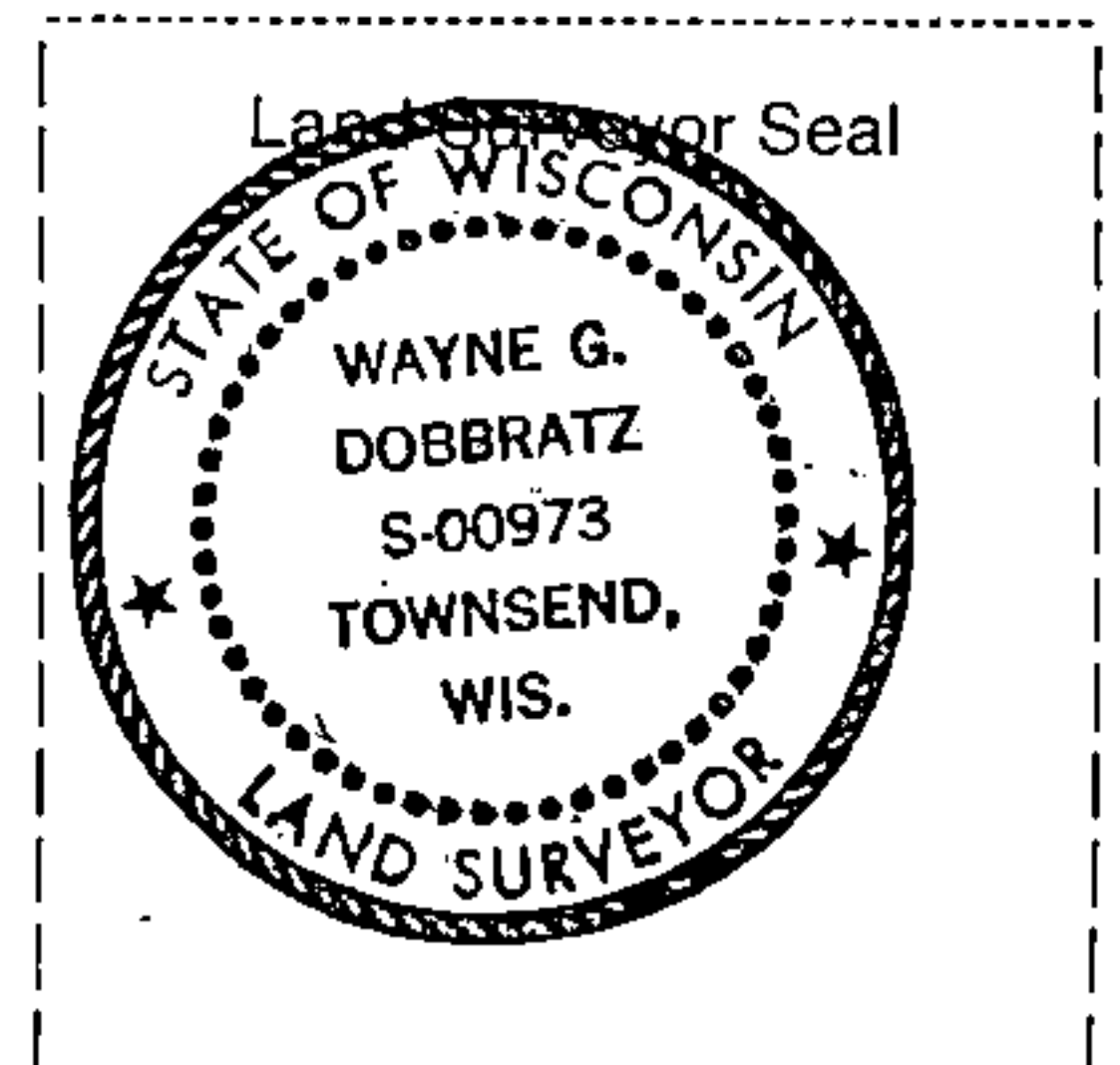
The S. 1/4 CORNER
corner of Section 21,
T. 35 N., R. 15 E.,
Fourth Principal Meridian,
Marinette County, Wisconsin



● = Location of Corner

DATA ENTRY [checked]
TRACT INDEX [checked]
RECORDING FEE [checked]

REGISTER'S OFFICE
Forest County, WI
Received for record this 15th day
of March AD, 1996
at 9:00 o'clock A.M. and
recorded in Vol. 35-15 of records
on page R-11
[Signature]
REGISTER



I, WAYNE G. DOBBRATZ
(type or print name) certify that the corner location shown on this record was determined by
me or under my direction and control and that this U.S. Public Land Survey Monument Record
is correct and complete to the best of my knowledge and belief.

[Signature]
Date 3/13/96

Index No. R-11

R-11