

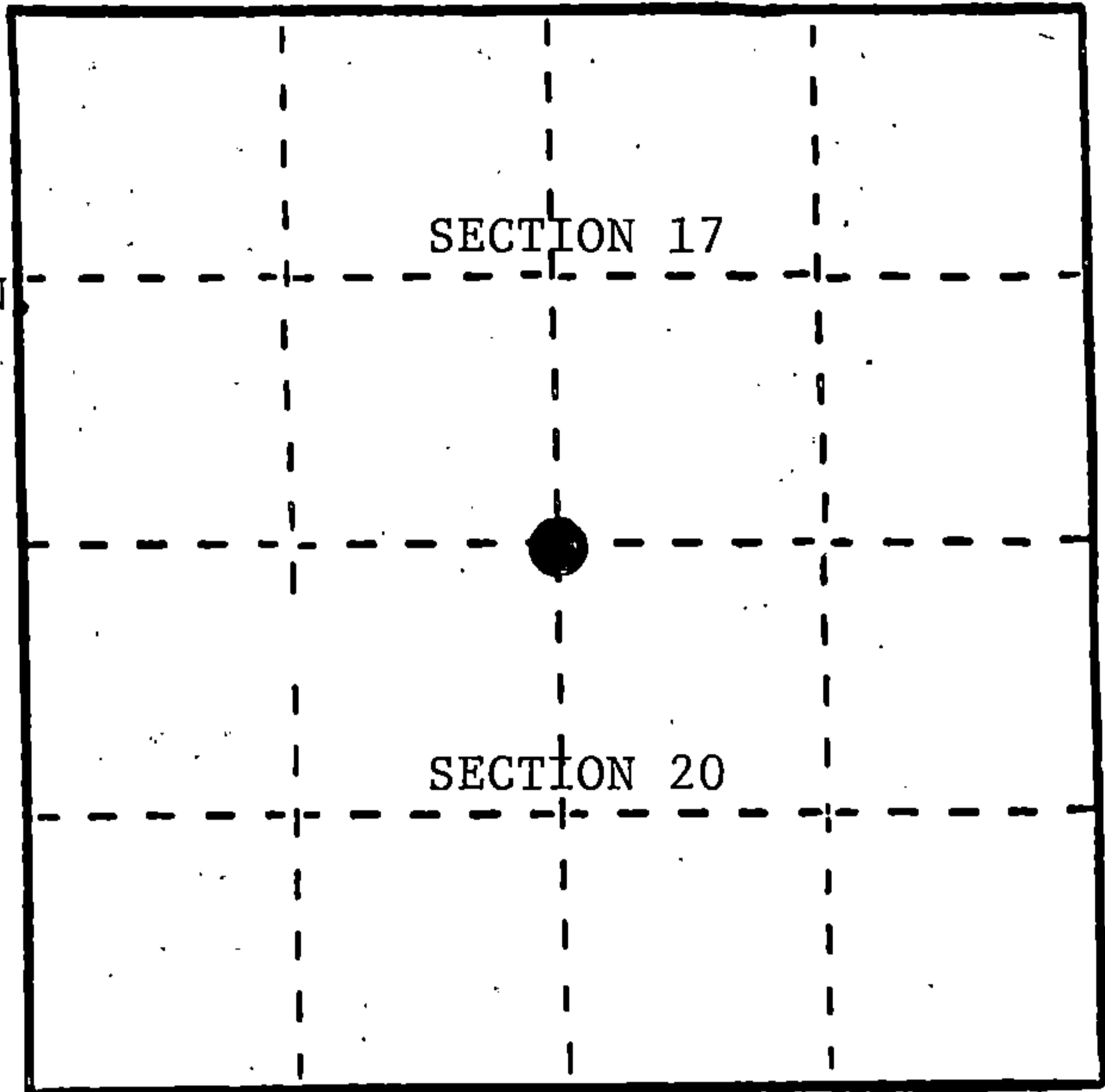
U. S. PUBLIC LAND SURVEY MONUMENT RECORD

INSTRUCTIONS: This record shall show the location of the corner and shall include all of the following nine elements (a through i).

(a) Identify the corner by reference to the U.S. public land survey system.

● = Corner monument restored.

Quarter Corner to Sections 17 and 20, T35N, R15E, 4th P.M.



REGISTER'S OFFICE
Forest County, Wis.

Received for record this 10th day
of Sept, A.D., 1989 at
10:25 o'clock A.M. and recorded
in Vol. CORNER RESTORATIONS
page N-7

Paul Achenbrenner
Register of Deeds

(b) Describe any record evidence, monument evidence, occupational evidence, testimonial evidence or any other material evidence you considered, and whether the monument was found or placed.

In 1859 James McBride established this corner and set a wood post and BTs:
10" Birch, N35°E, 17 Links 10" Birch, S28°E, 21 Links

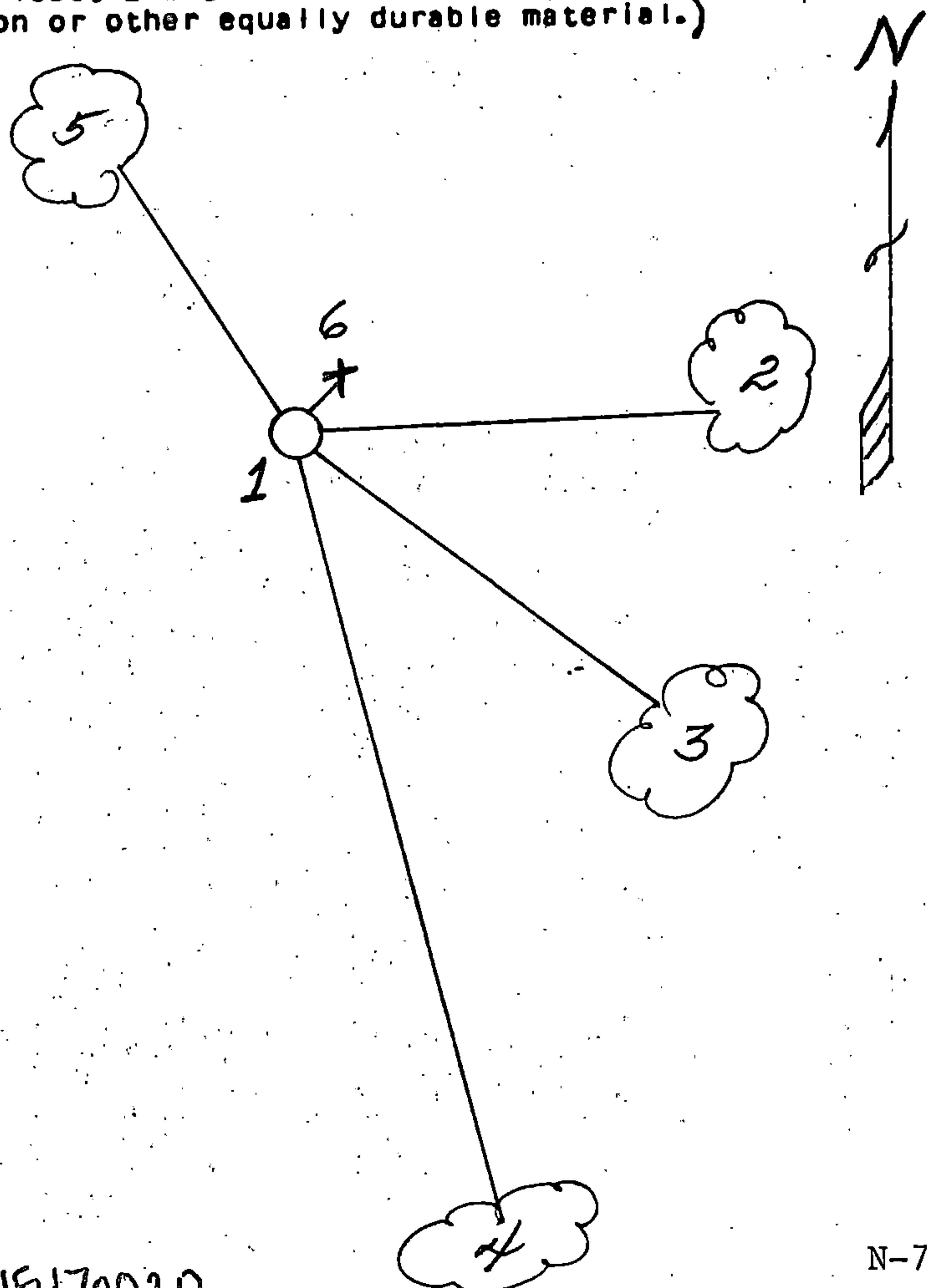
5/8/89 - After a thorough search of the area, we could find no evidence of this corner and I declare it lost.

6/18/89 - I restore this corner by lost methods between the Section Corners east and west.

(c) In the plan view drawing below, provide reference ties to at least 4 witness monuments, or, if the location is within a municipality, to at least 2 witness monuments. (Witness monuments shall be made of concrete, natural stone, iron or other equally durable material.) Describe witness monuments.

(d) Show a plan view drawing depicting the relevant monuments and reference ties which is sufficient in detail to enable accurate relocation of the corner monument if the corner monument is disturbed. Indicate north.

- 1) 2 1/2" x 36" Aluminum Monument
- 2) 7" Red Pine, N88°E, 23.93'
- 3) 7" Red Pine, S60°E, 25.72'
- 4) 14" Tamarack, S13°E, 139.33'
- 5) 7" Red Pine, N27°W, 53.38'
- 6) Steel Sign Post, Northeast, 1.00'



(e) Describe any material discrepancy between the location of the corner as restored or reestablished and the location of that corner as previously restored or reestablished by distance and direction. Show the discrepancy on the plan view drawing under (d), above. Show the distances between the corner as previously restored or reestablished and (1) the corner as restored or reestablished, and (2) to at least 2 of the witness monuments shown on the drawing in (d), above.

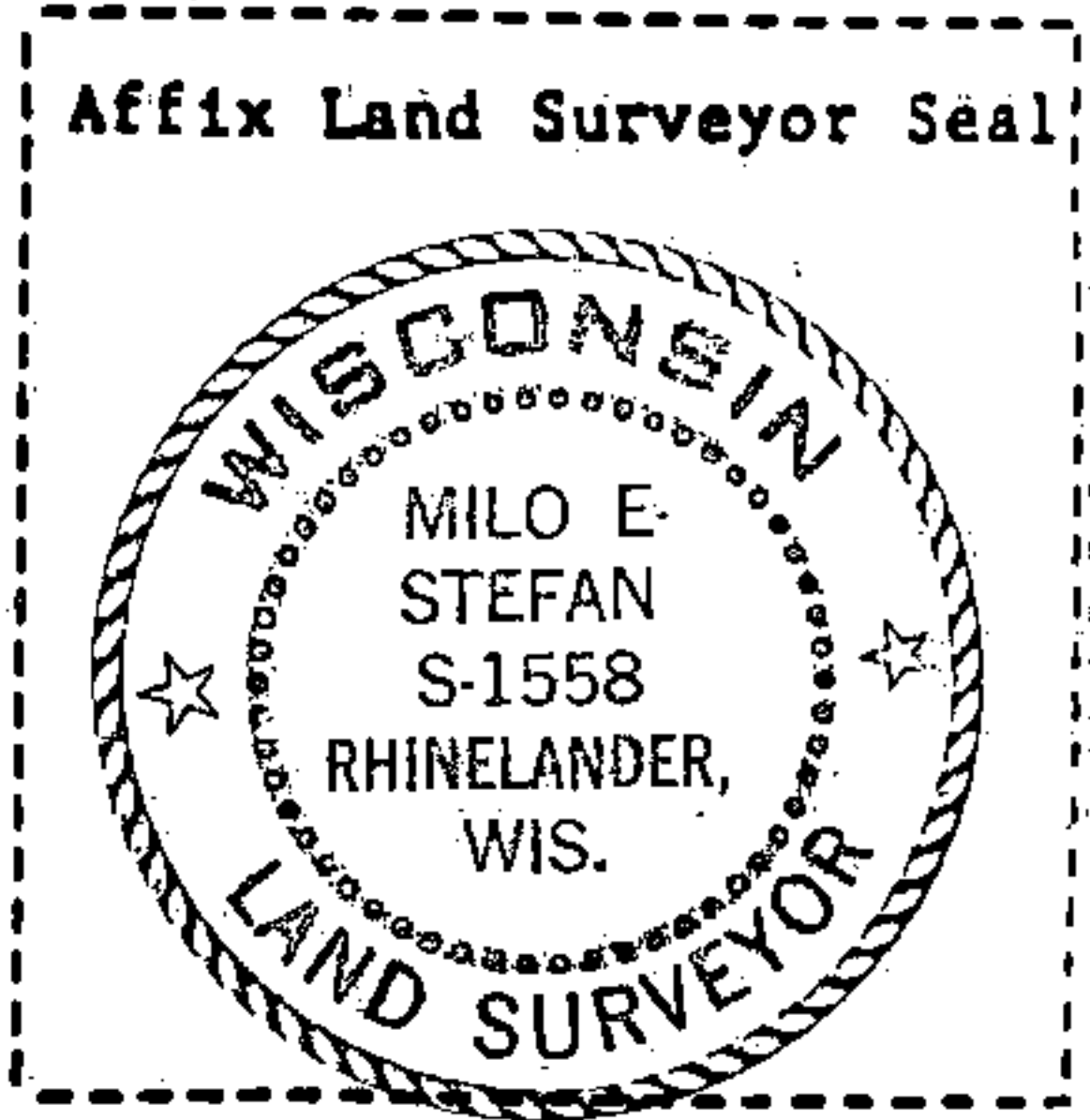
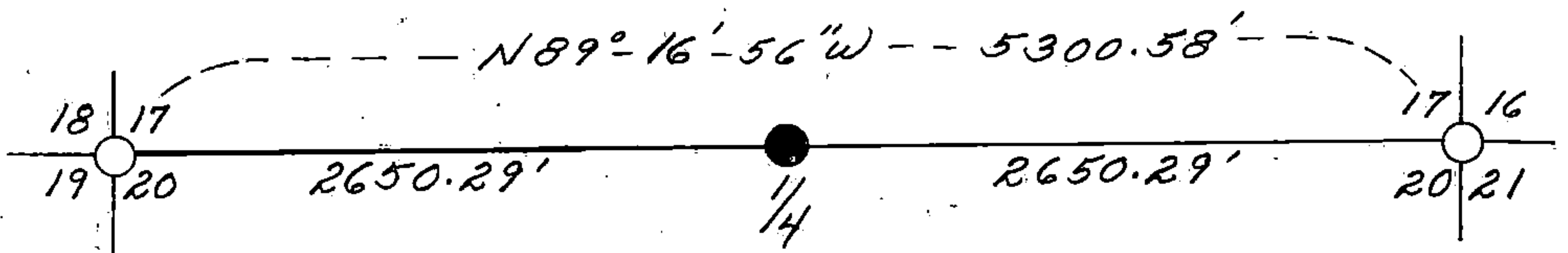
None

(f) Was the corner restored through acceptance of (1) an obliterated evidence location, or, (2) a found perpetuated location?

No

(g&h) Was the corner reestablished through lost corner proportionate methods? If so, show the method, including the directions and distances to other public land survey corners used as evidence or used for proportioning in determining the corner location?

Yes



(i) Milo E. Stefan
(Type or print name) certify that the corner location shown on this record was determined by me or under my direction and control and that this U.S. Public Land Survey Monument Record is correct and complete to the best of my knowledge and belief.

Milo E. Stefan
Signature

6/24/89
Date

Certificate ready for filing: Dale S. Stacey
District Ranger