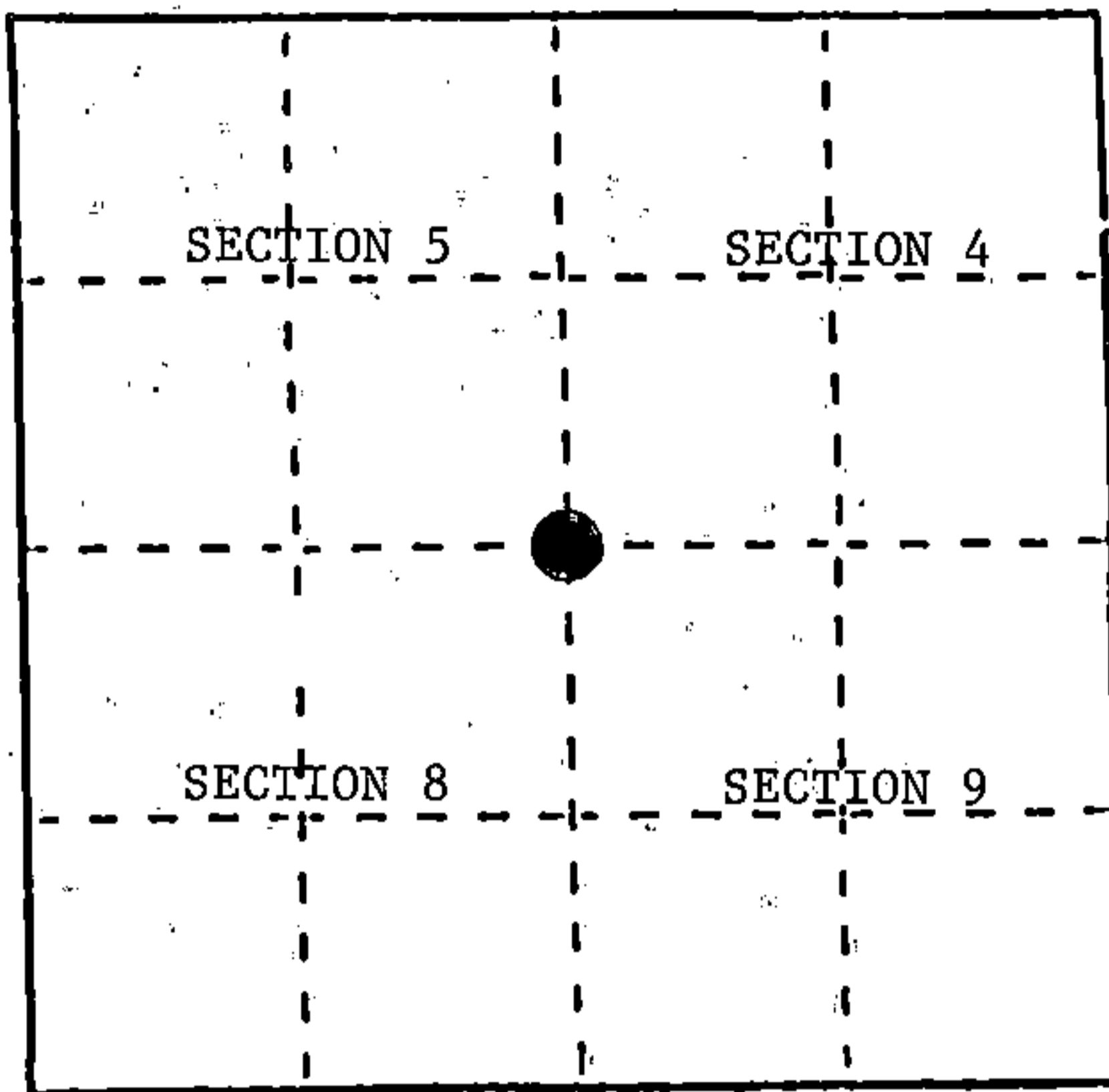


U. S. PUBLIC LAND SURVEY MONUMENT RECORD.

INSTRUCTIONS: This record shall show the location of the corner and shall include all of the following nine elements (a through i).

- (a) Identify the corner by reference to the U.S. public land survey system.
- = Corner monument restored.

Section Corner to Sections 4, 5, 8 & 9, T35N, R15E, 4th P.M.



REGISTER'S OFFICE  
 Forest County, Wis.  
 Received for record this 6<sup>th</sup> day  
 of Sept. A.D. 1989 at  
 10:25 o'clock A.M. and recorded  
 in Vol. CORNER RESTORATIONS  
 page 59  
*Paul Archambrenner*  
 Register of Deeds

- (b) Describe any record evidence, monument evidence, occupational evidence, testimonial evidence or any other material evidence you considered, and whether the monument was found or placed.

In 1859 James McBride established this corner and set a wood post with BTs:  
 10" Hemlock, N57°E, 50 Links      12" Birch, S26°E, 25 Links  
 8" Birch, S44°W, 17 Links      8" Hemlock, N40°W, 20 Links

1973 - Thomas Arnott restored corner at intersection of County Highway "H" and Venters Road North. Also, fence line Southerly. He set railroad spike for the corner.

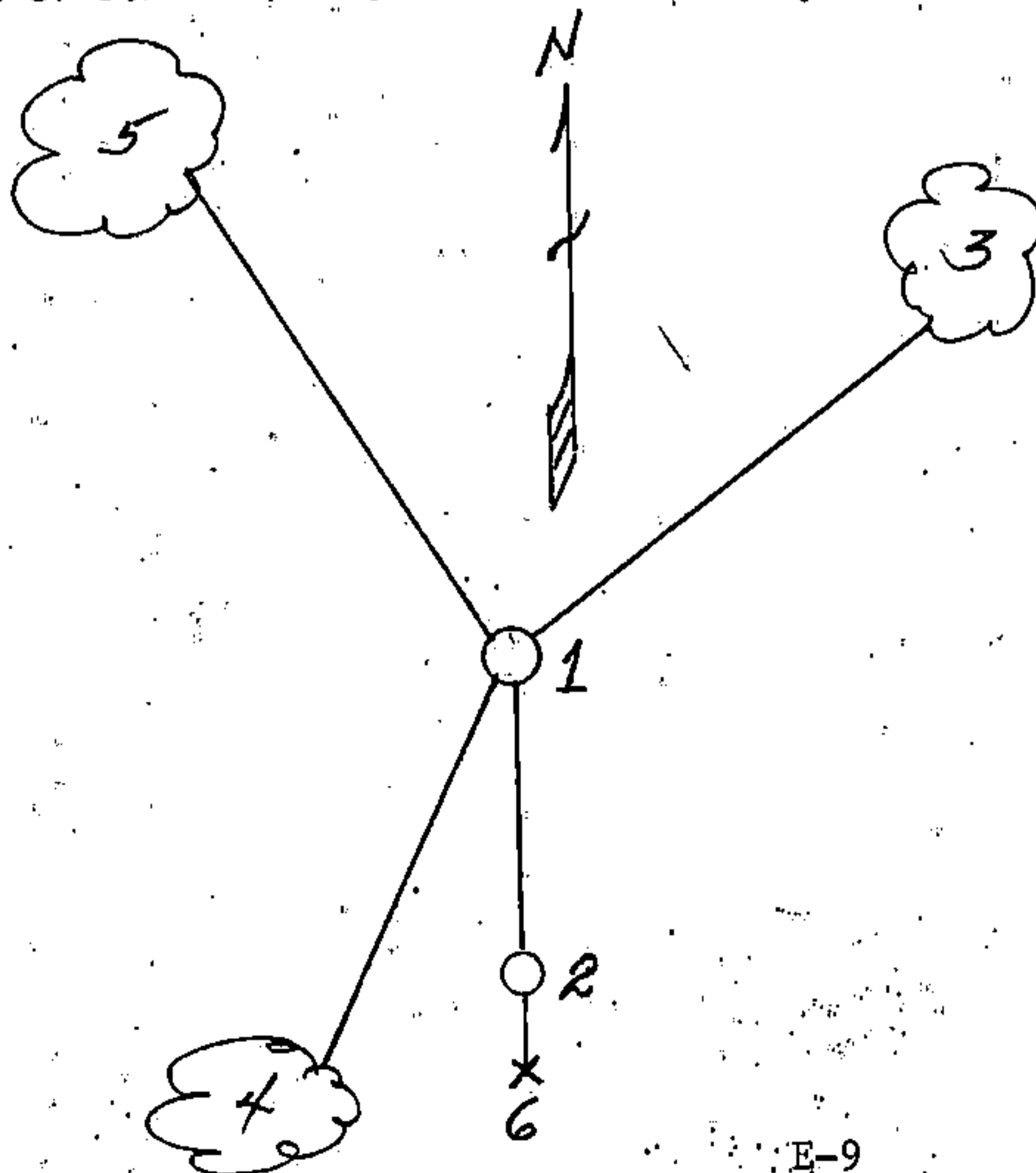
1982 - John Fisher used this corner to subdivide Section 5 for the Forest Service. He made bearing trees and established a Witness Corner, South, 33.00 feet.

3/23/89 - I found corner in good condition needing no further work.

- (c) In the plan view drawing below, provide reference ties to at least 4 witness monuments, or, if the location is within a municipality, to at least 2 witness monuments. (Witness monuments shall be made of concrete, natural stone, iron or other equally durable material.) Describe witness monuments.

- (d) Show a plan view drawing depicting the relevant monuments and reference ties which is sufficient in detail to enable accurate relocation of the corner monument if the corner monument is disturbed. Indicate north.

- 1) Railroad spike
- 2) Witness Corner, South, 33.00'
- 3) 6" Sugar Maple, N45°E, 46.76'
- 4) 6" Red Pine, S19°W, 52.47'
- 5) 7" Sugar Maple, N37°W, 50.60'
- 6) Steel Sign Post, South, 1.00' of W.C.



(e) Describe any material discrepancy between the location of the corner as restored or reestablished and the location of that corner as previously restored or reestablished by distance and direction. Show the discrepancy on the plan view drawing under (d), above. Show the distances between the corner as previously restored or reestablished and (1) the corner as restored or reestablished, and (2) to at least 2 of the witness monuments shown on the drawing in (d), above.

None

(f) Was the corner restored through acceptance of (1) an obliterated evidence location, or, (2) a found perpetuated location?

A perpetuated location

(g&h) Was the corner reestablished through lost corner proportionate methods? If so, show the method, including the directions and distances to other public land survey corners used as evidence or used for proportioning in determining the corner location?

(1) I, Milo E. Stefan  
(Type or print name) certify that the corner location shown on this record was determined by me or under my direction and control and that this U.S. Public Land Survey Monument Record is correct and complete to the best of my knowledge and belief.

Milo E. Stefan  
Signature

July 8, 1989  
Date



CERTIFICATE READY FOR FILING:

Dale Staege  
District Ranger

Document Number

210675

REGISTER'S OFFICE  
Forest County, Wis.  
Received for record this 5<sup>th</sup> day  
of December A.D., 2012 at  
10:00 o'clock A.M. and recorded  
in Vol. Corner Restoration  
page E-9  
*Hugh W. Guy Jr.*  
Register of Deeds

U.S. PUBLIC LAND SURVEY MONUMENT RECORD

(As Required By s. A-E 7.08, WI Adm. Code)

History of original corner establishment and subsequent restorations and description of any record, monument, occupational, testimonial or other evidence considered:

- 1859 James McBride, Deputy Surveyor, established corner  
Tom Arnott sets railroad spike for corner ( no date )
- 1982 John Fisher finds railroad spike in his survey of Section 5
- 1989 Milo Steffan finds railroad spike in his survey of Section 8
- 2000 Ayres Associates survey for County Highway H reconstruction and find  
County monument at corner location
- 2012 H. Guy sets a PK nail for corner using Ayres Associates traverse  
through corner and corners East and West and makes new ties

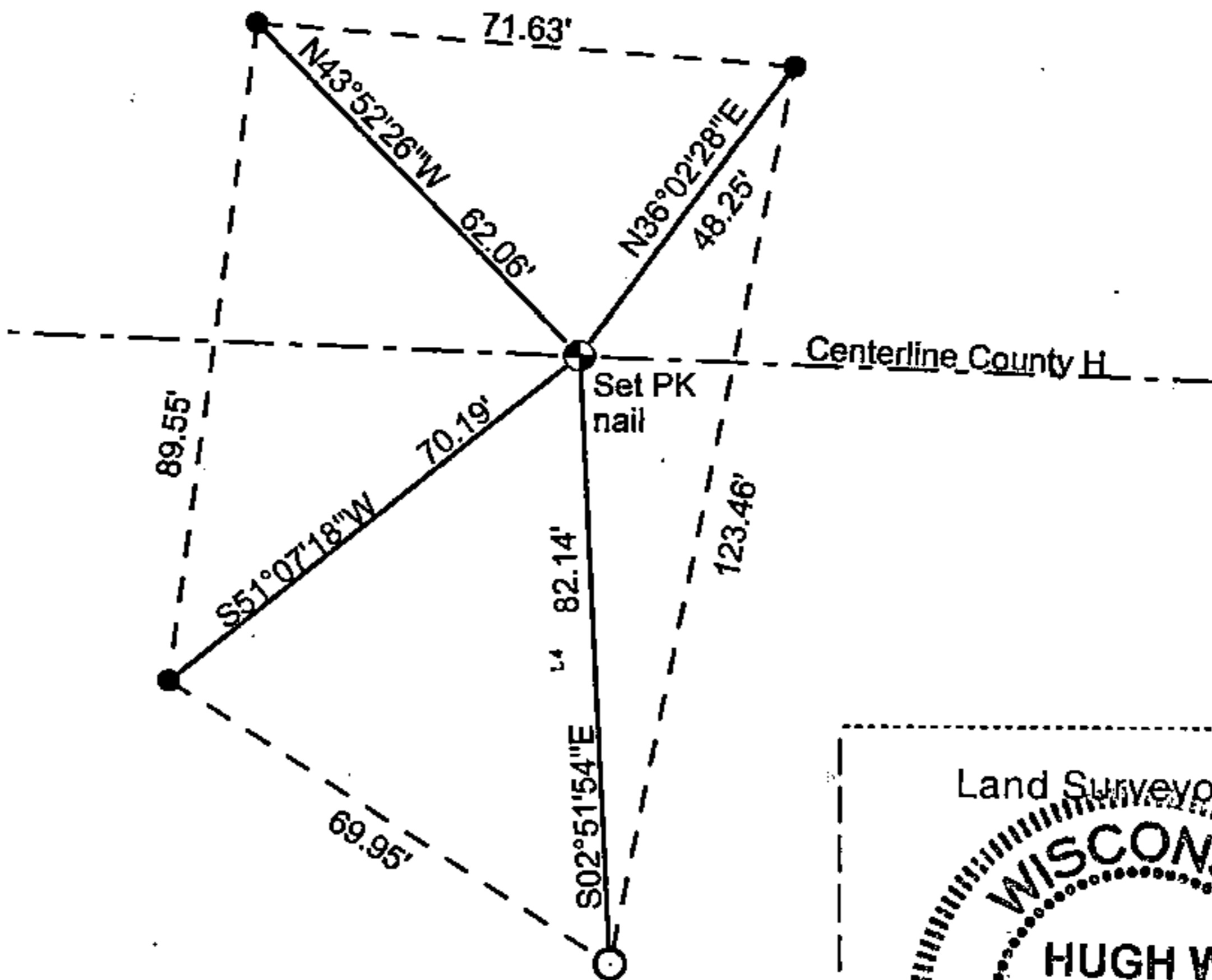
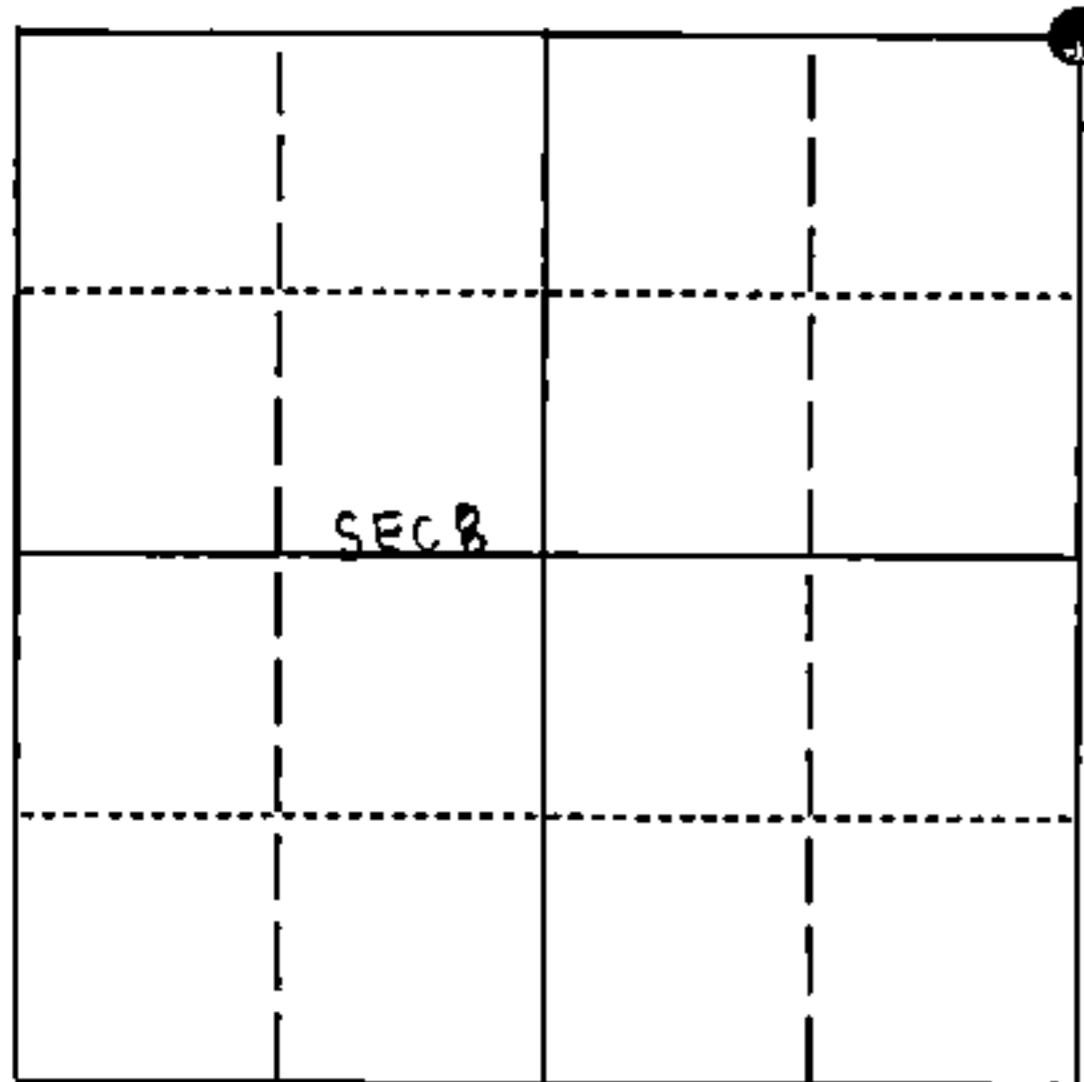
Corner was: (Check All That Apply)

- Restored through acceptance of an obliterated evidence location
- Restored through acceptance of a found perpetuated location
- Considered a lost corner and reestablished through lost corner proportionate methods (include a plan view drawing showing distances and directions to other Public Land Survey Corners used for proportioning and determining the corner location)
- Restored or reestablished in a location that differs from a previous restoration or reestablishment (include a plan view drawing and indicate what was set and/or found)

Describe the monument and accessories used to perpetuate the location of this corner. (include a plan view drawing and indicate what was set and/or found)

- 3/4" x 24" iron rod set
  - 5/8" x 24" iron rod set
- SCALE 1" = 40'

The Northeast  
corner of Section 8,  
T. 35 N., R. 15 E.,  
Fourth Principal Meridian,  
Marinette County, Wisconsin



● = Location of Corner

Hugh W. Guy Jr.

RLS #1301

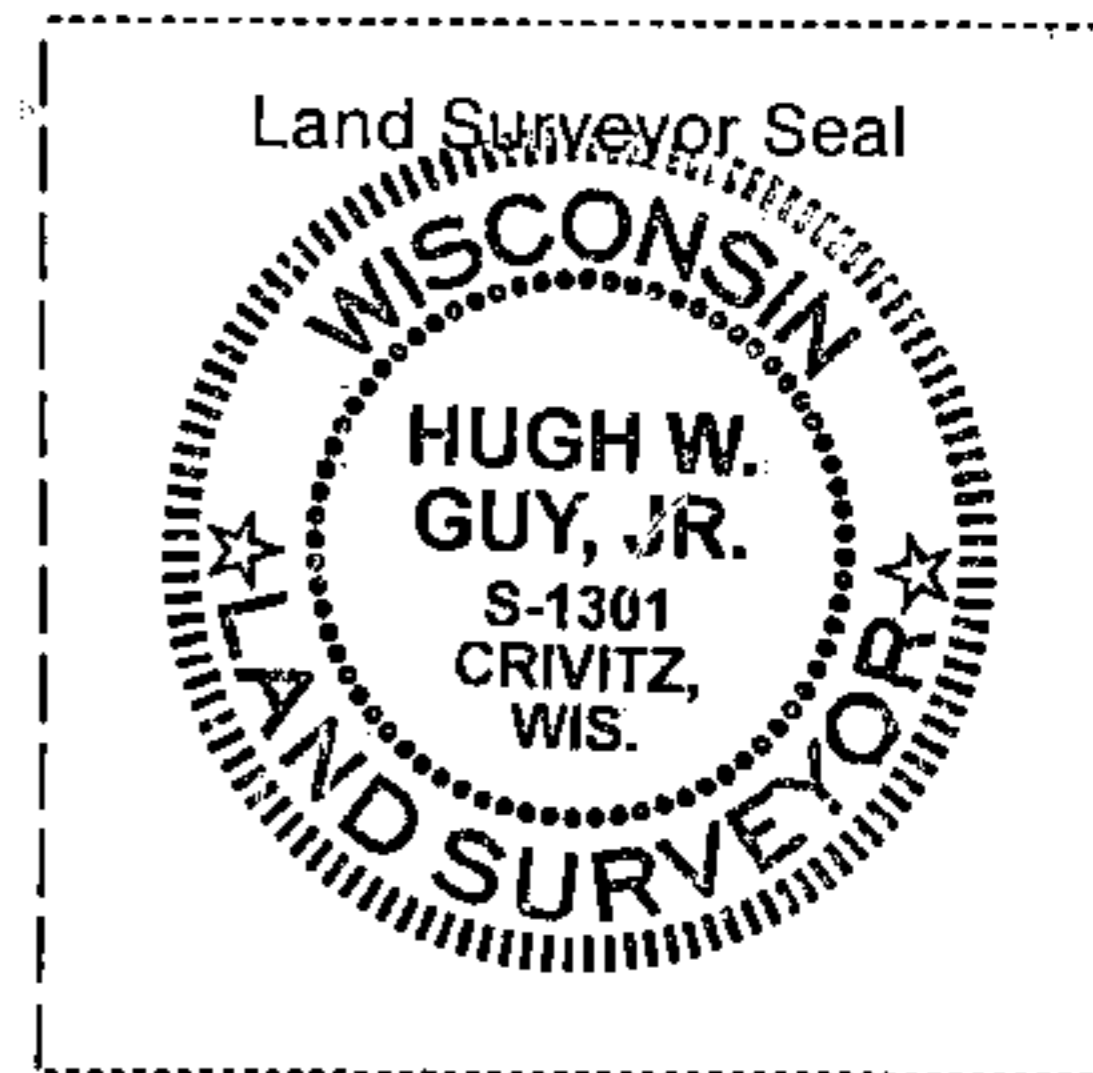
I, (type or print name) certify that the corner location shown on this record was determined by me or under my direction and control and that this U.S. Public Land Survey Monument Record is correct and complete to the best of my knowledge and belief.

Signature

Date

11-10-2012

Index No.



43515050000

E-9