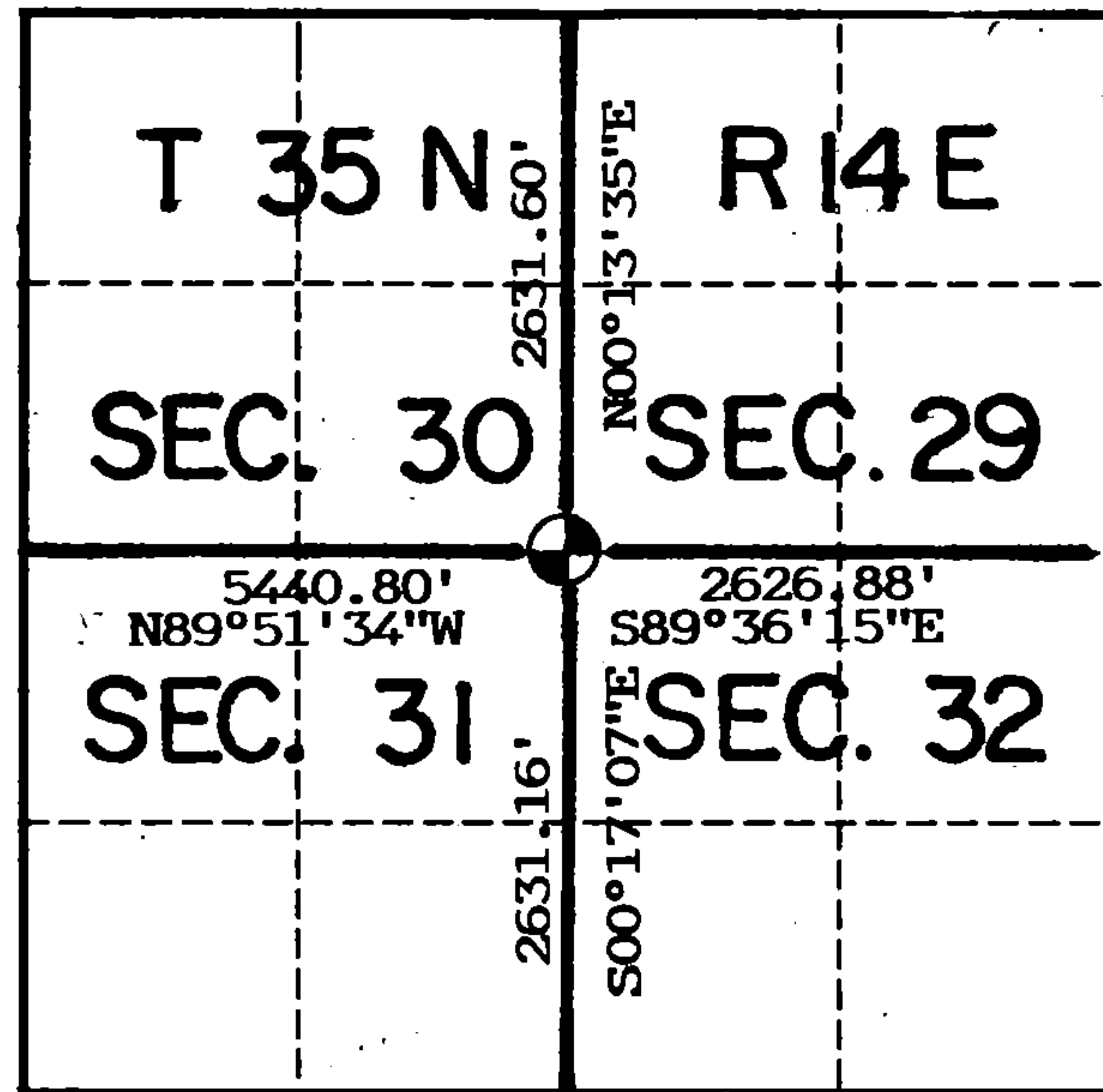


U. S. PUBLIC LAND SURVEY MONUMENT RECORD

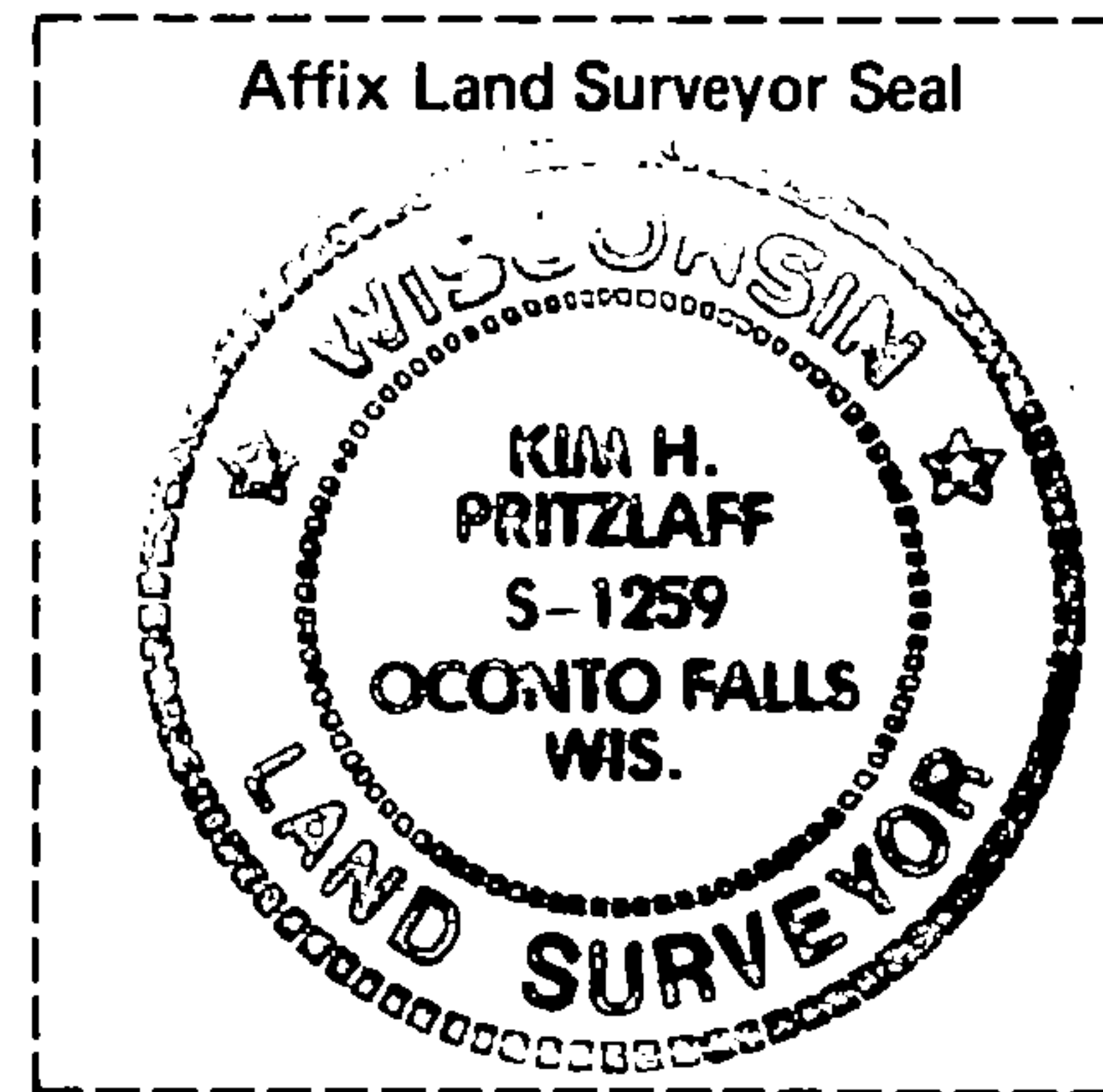
INDEX NO. V-5

Section _____ Corner to Section 29 30 T35 N, R14 E
 (Section/Quarter) 31 32

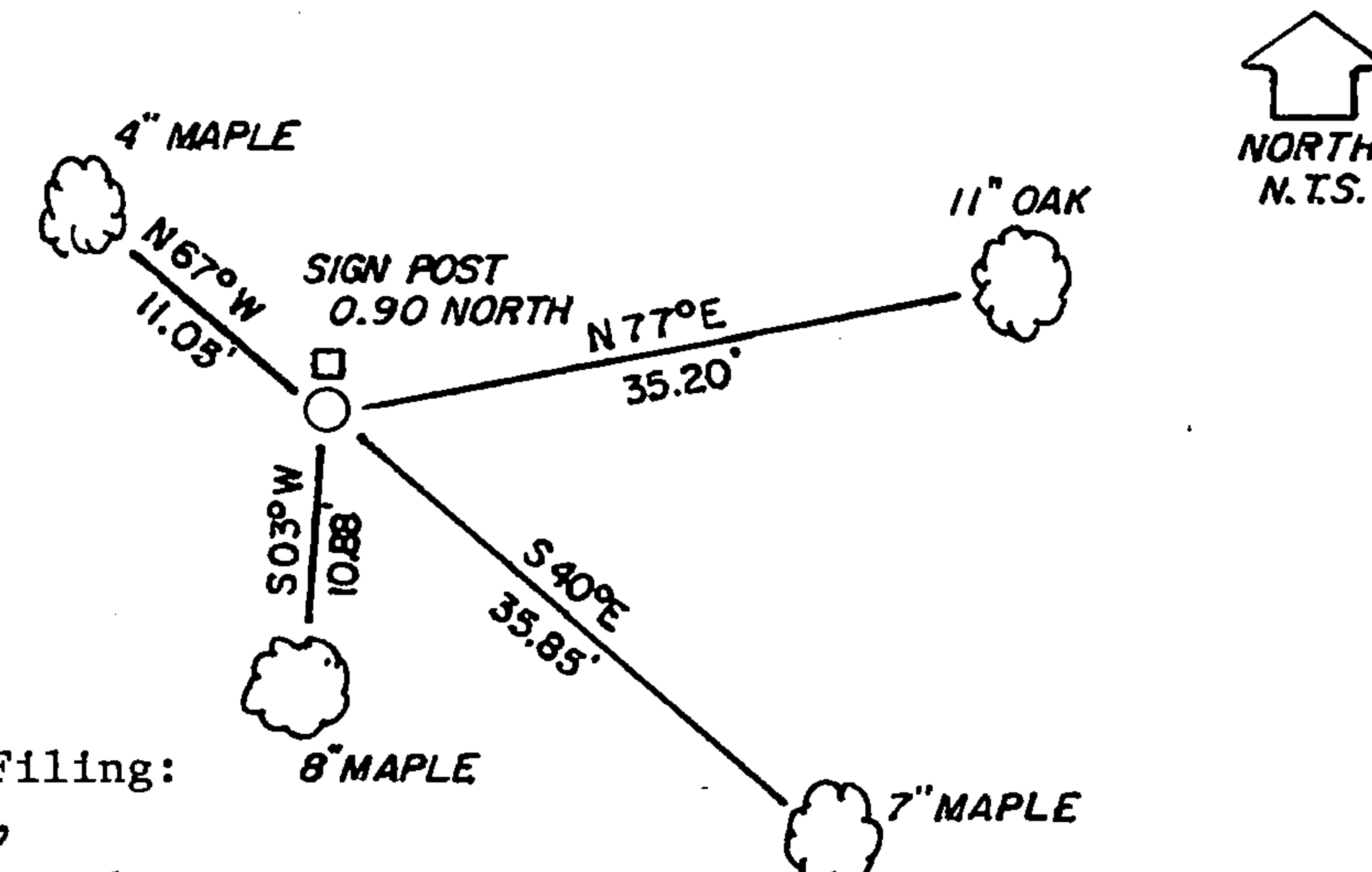


Show distances and bearings if set by proportional measurement.

○ = Corner monument restored.



Set a 2"x 36" aluminum post with cap stamped for corner. Ties are to aluminum nails driven into the tree centers which trees were blazed and scribed. Bearings are magnetic.



History of original corner establishment, record evidence, monument evidence, occupational evidence, testimonial evidence or any other material evidence, and what you found and how the monument was set.

In 1859 James McBride, set this corner at 80 chains using the following bearing trees:

Hemlock	20"	N03W	50 links
Hemlock	12"	N26E	23 "
Hemlock	8"	S36E	20 "
Hemlock	10"	S78W	16 "

Set up a search area at the double proportionate position and located many Hemlock stumps. After trying a number of bearing tree combinations, I could not make the stumps fit nor could I find any post evidence. I even checked two plantation posts east and south of over one chain and they proved negative. I determined the corner lost and set it at double proportionate measure between the $\frac{1}{2}$ corner north; $\frac{1}{2}$ corner east; $\frac{1}{2}$ corner south, and the section corner west.

In the plan view drawing below, provide reference ties to at least 4 witness monuments, or, if the location is within a municipality, to at least 2 witness monuments. (Witness monuments shall be made of concrete, natural stone, iron or other equally durable material, except wood other than bearing trees.) Also, show any material discrepancies between the corner restored or re-established and the location of any other previous corner location or occupation.

149070

4351430000

I, Kim H Pritzlaff, RLS No.1 1259
 (Type or print name) certify that the corner location shown on this record was determined by me or under my direction and control and that this U.S. Public Land Survey Monument Record is correct and complete to the best of my knowledge and belief.

Kim Pritzlaff
 Signature

1993
 Date

Certificate Ready For Filing:

Ralph Abella
 Acting District Ranger

INDEX NO. _____

MAINTENANCE RECORD

Condition of Monument _____

Condition of Ties _____

New Ties, if any:

_____ Date

_____ Signature

Condition of Monument _____

Condition of Ties _____

New Ties, if any:

_____ Date

_____ Signature

Condition of Monument _____

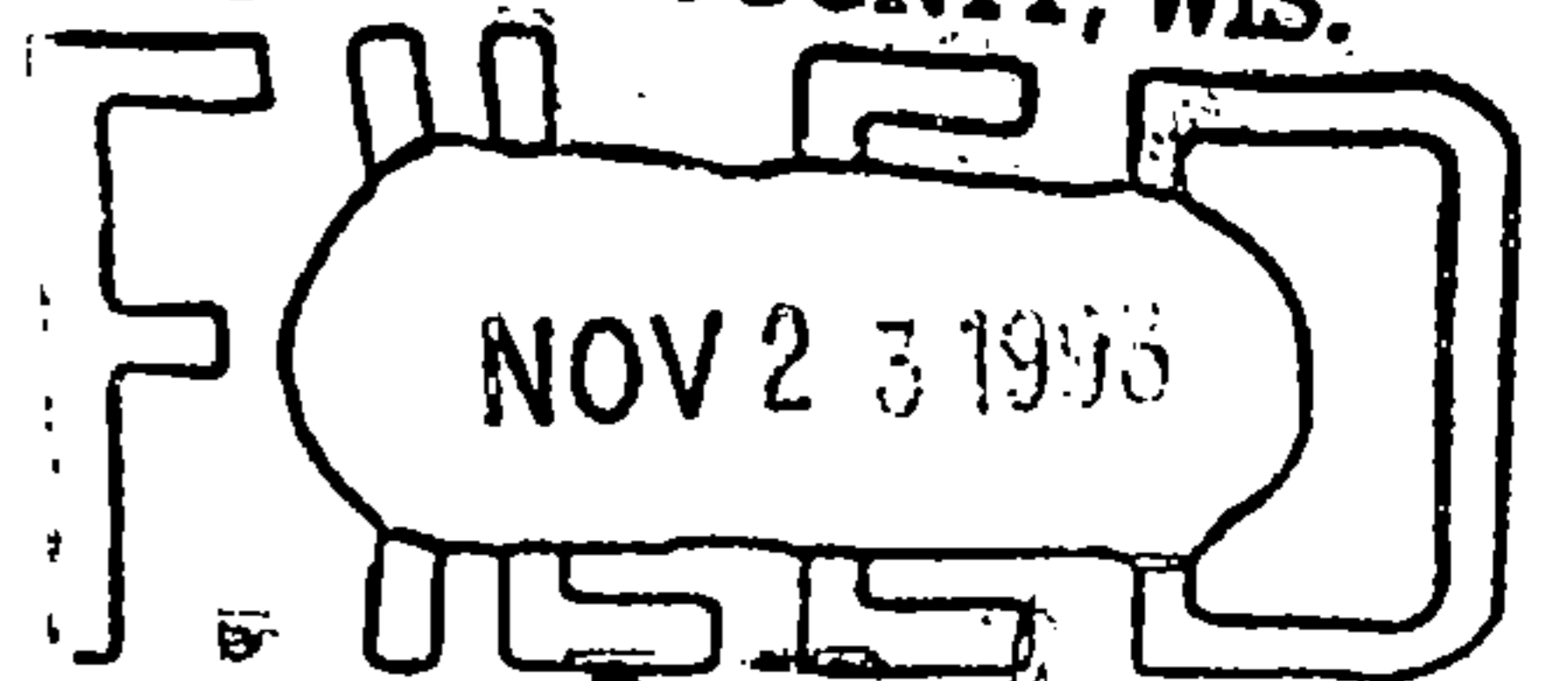
Condition of Ties _____

New Ties, if any:

_____ Date

_____ Signature

REGISTER'S OFFICE
FOREST COUNTY, WIS.



At _____ O'clock _____ M.
P. A. [Signature]
Register of Deeds