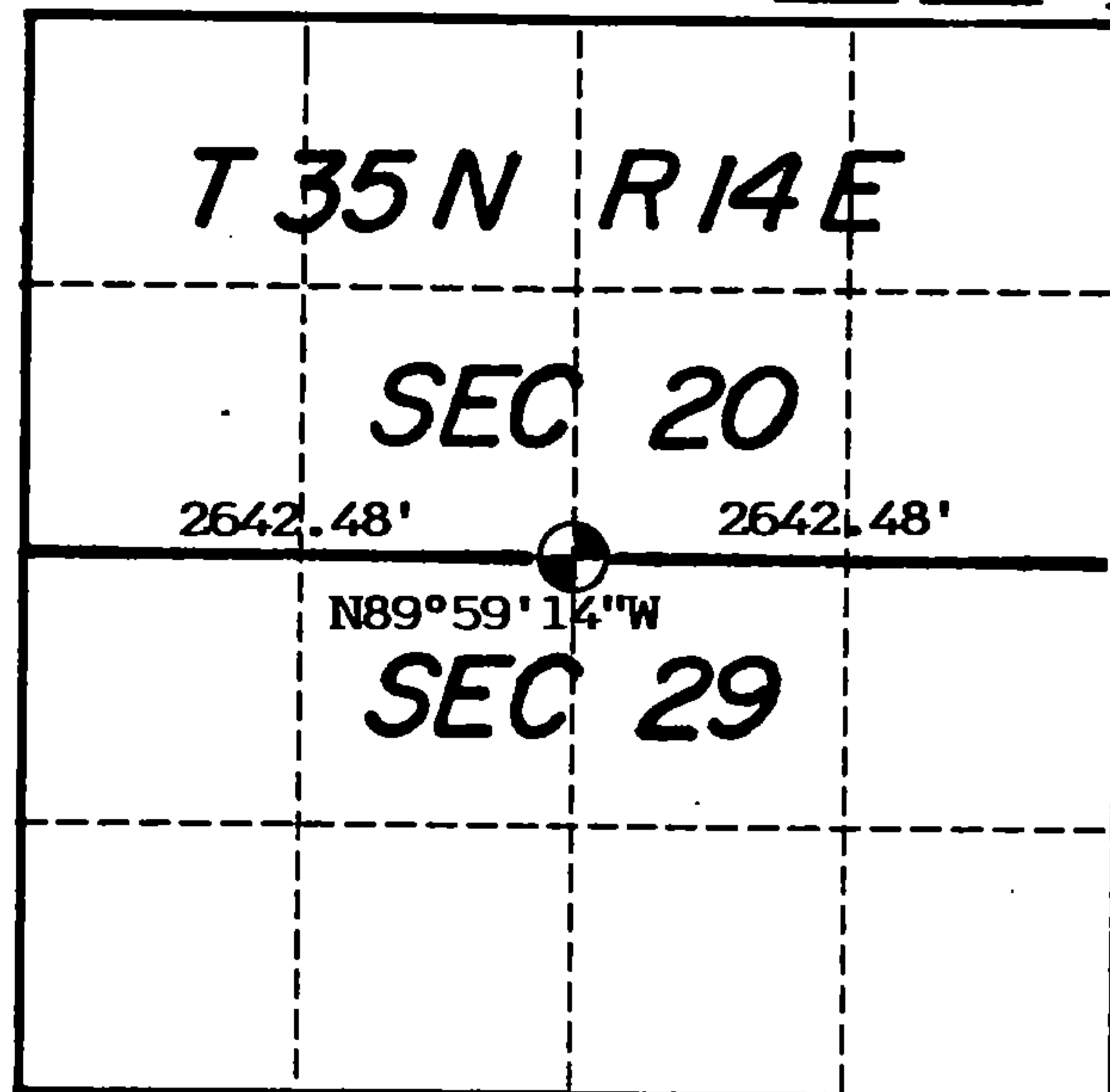


U. S. PUBLIC LAND SURVEY MONUMENT RECORD

INDEX NO. R-20

Quarter _____ Corner to Section 20 29 T 35 N, R 14 E
(Section/Quarter) _____



Show distances and bearings if set by proportional measurement.

History of original corner establishment, record evidence, monument evidence, occupational evidence, testimonial evidence or any other material evidence, and what you found and how the monument was set.

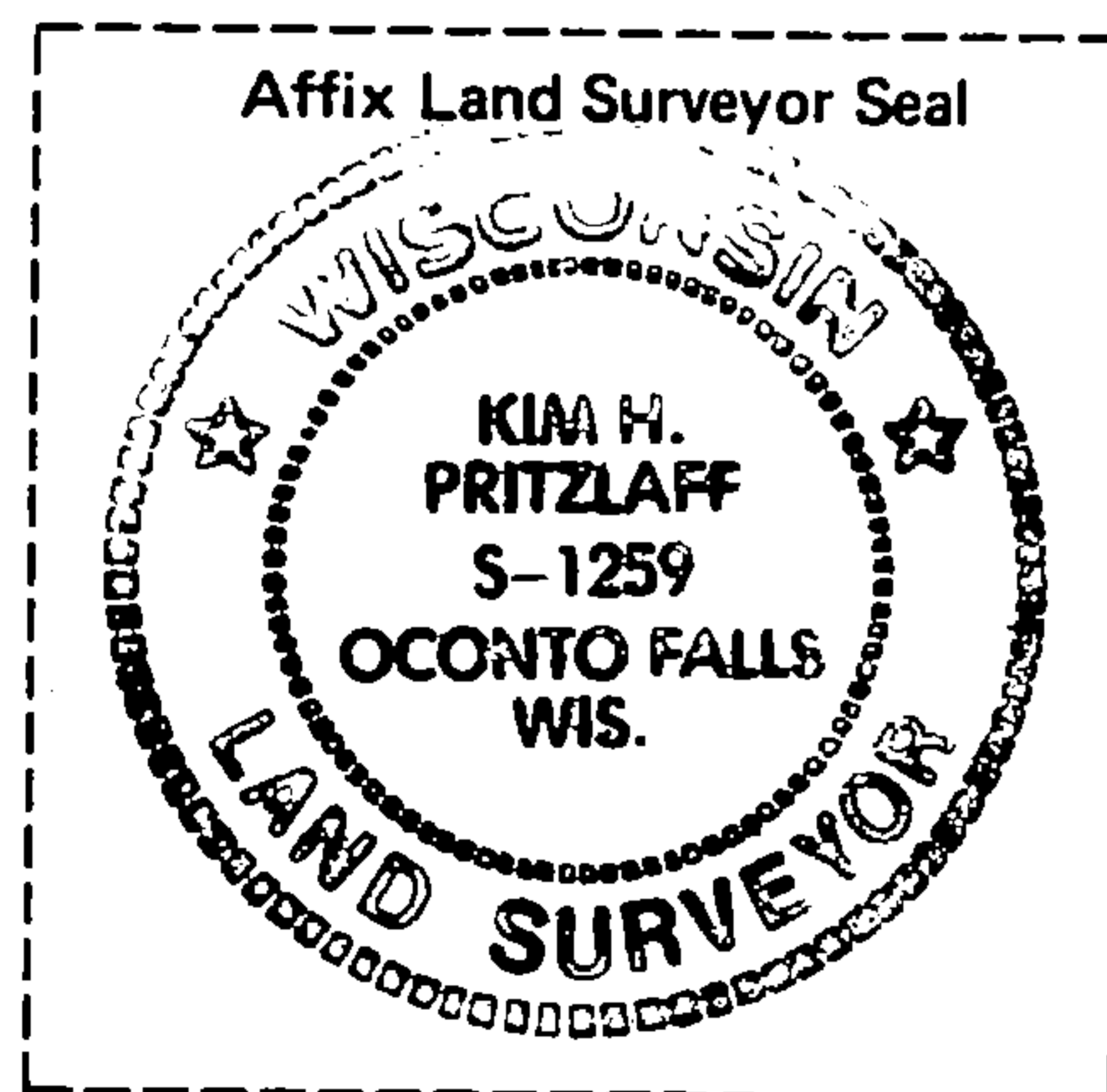
In 1859 James McBride , contract surveyor, set this corner at 40.03 chains and marked the following bearing trees:

Birch	15"	S33W	20 links
Hemlock	12"	N37E	42 "

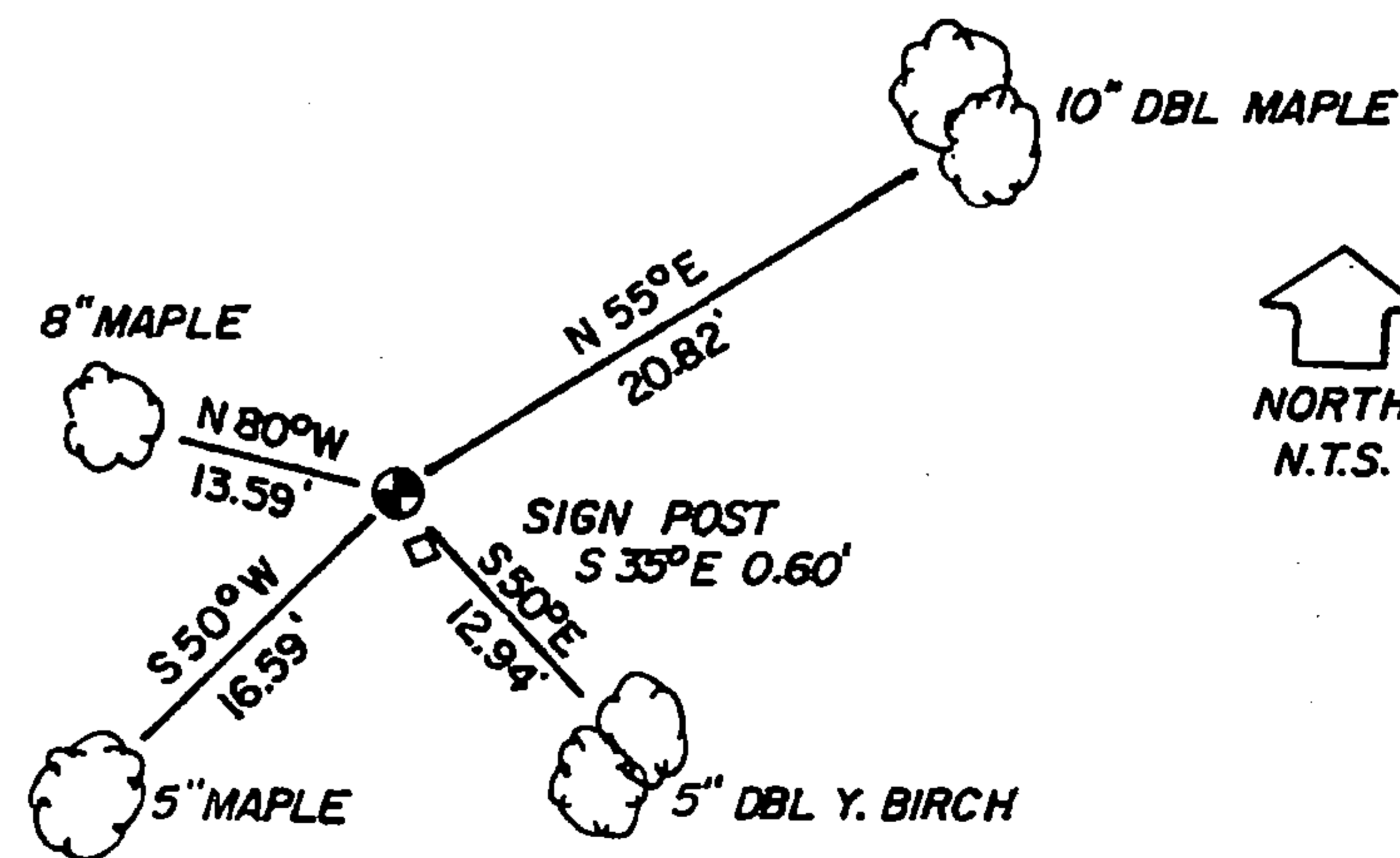
I set up a single proportionate search area for this corner which fell on a side hill and on the edge of a plantation line. I searched for the Hemlock BT and found some Hemlock stumps but no post evidence. I therefore considered the corner lost and set it by single proportionate measure.

In the plan view drawing below, provide reference ties to at least 4 witness monuments, or, if the location is within a municipality, to at least 2 witness monuments. (Witness monuments shall be made of concrete, natural stone, iron or other equally durable material, except wood other than bearing trees.) Also, show any material discrepancies between the corner restored or re-established and the location of any other previous corner location or occupation.

○ = Corner monument restored.



Set a 2"x 36" aluminum monument with cap stamped for corner. Ties are to aluminum nails driven into the tree centers which trees were blazed and scribed. Bearings are magnetic.



I, Kim H Pritzlaff, RLS No.1 259
(Type or print name) certify that the corner location shown on this record was determined by me or under my direction and control and that this U.S. Public Land Survey Monument Record is correct and complete to the best of my knowledge and belief.

Kim Pritzlaff
Signature

1993
Date

Certificate Ready For Filing:

Ralph [Signature]
Acting District Ranger

149067

43514200020

INDEX NO. _____

MAINTENANCE RECORD

Condition of Monument _____

Condition of Ties _____

New Ties, if any:

_____ Date

_____ Signature

Condition of Monument _____

Condition of Ties _____

New Ties, if any:

_____ Date

_____ Signature

Condition of Monument _____

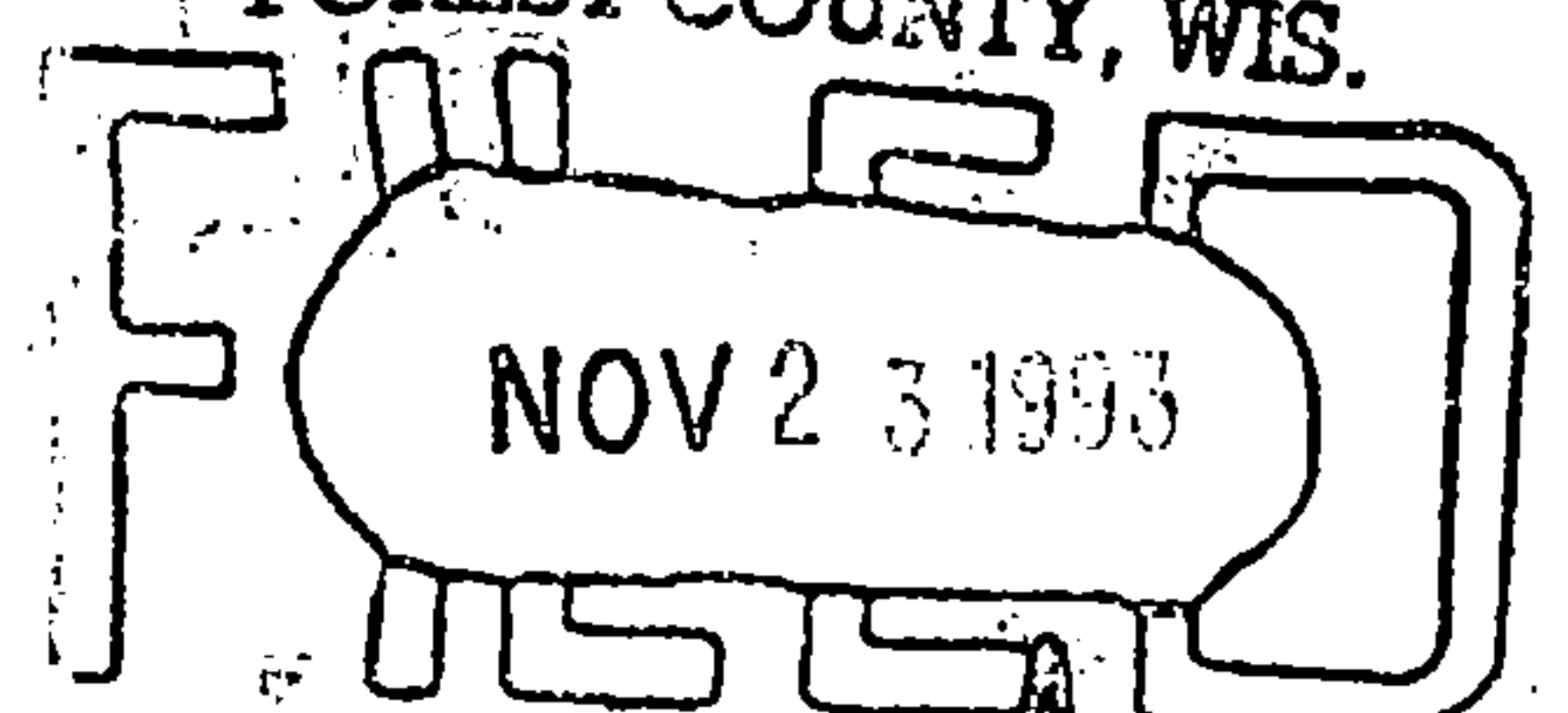
Condition of Ties _____

New Ties, if any:

_____ Date

_____ Signature

REGISTER'S OFFICE
FOREST COUNTY, WIS.



At 9 O'clock A M.
Paul A. Schenck Register of Deeds