

U.S. PUBLIC LAND SURVEY MONUMENT RECORD

Instructions: This record shall show the location of the corner and shall include all of the following nine elements (a through i).

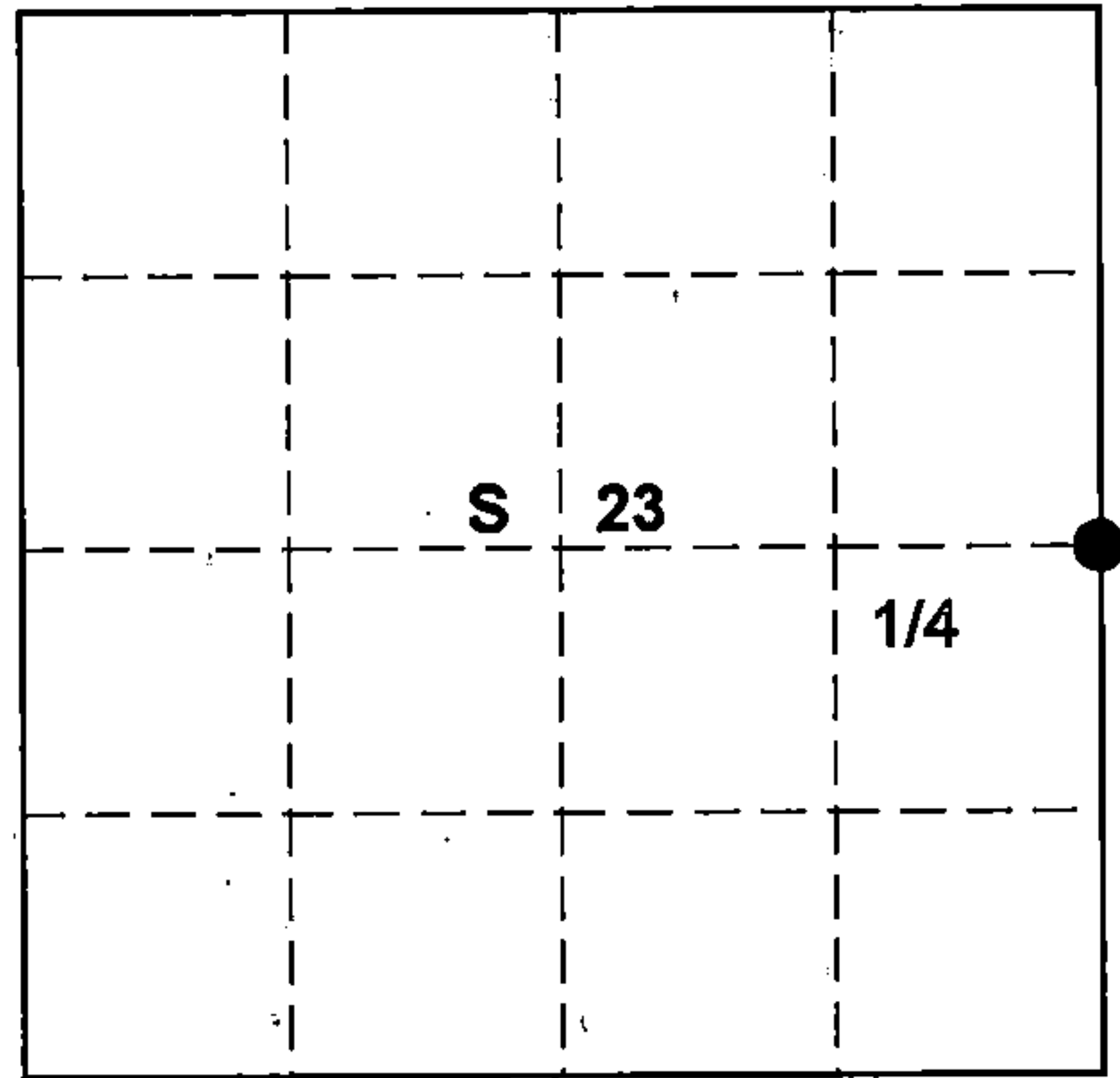
(a) Identify the corner by reference to the U.S. public land survey system.

○ = Corner monument restored.

W-1/4 Corner
 Sec. 23, T 35 N, R 13 E

Type of Monument:

2-1/4" Forest county Alum. Monument/3-1/4" Alloy Cap



FOREST COUNTY

(b) Describe any record evidence, monument evidence, occupational evidence, testimonial evidence or any other material evidence you considered, and whether the monument was found or placed.

Original corner established in 1865 by James C. Nowlin Gov't. Deputy surveyor from which Birch 14" bears N41W 30lks and Birch 10" bears S56e 35lks.

Neil Sperhake established corner in 1964, searched for corner and Bts but logging operations and site prep for Tree planting has destroyed them.

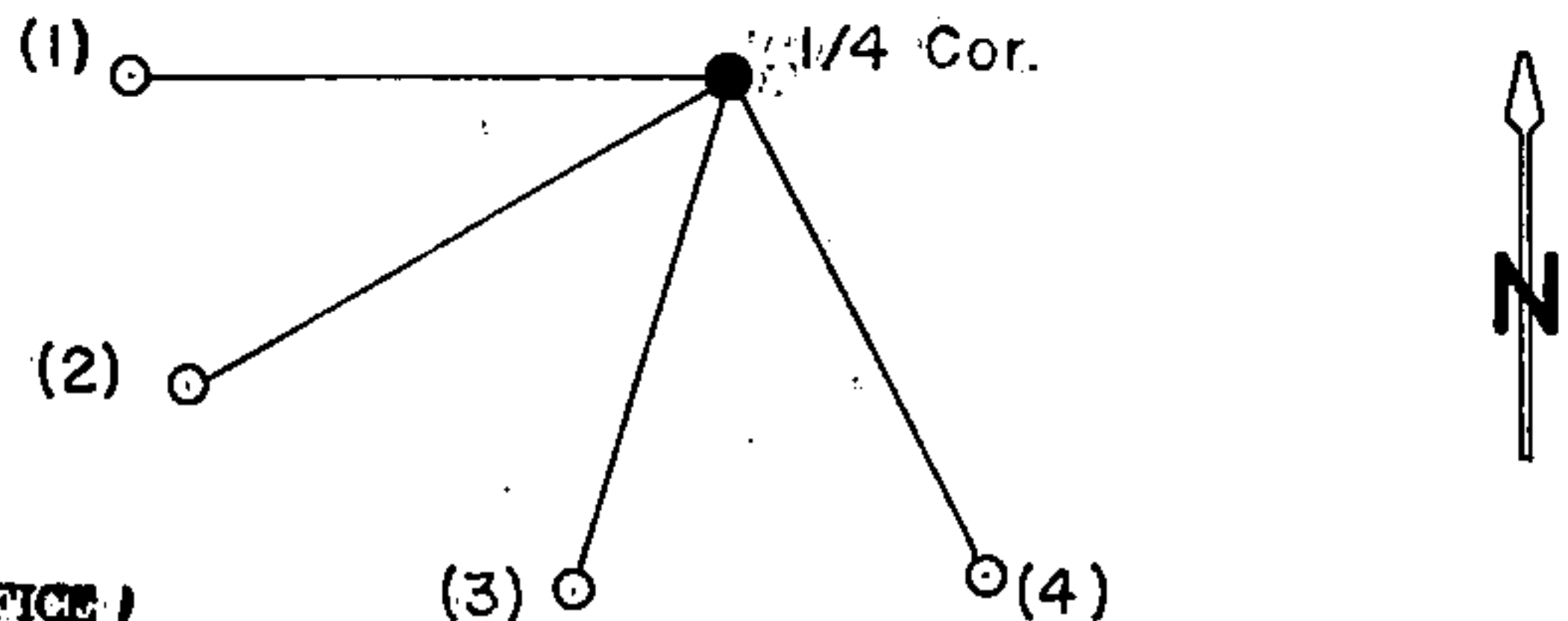
Reestablished quarter section corner by proportional measurement.
 Total distance from SE section corner to NE section corner of section 23, is 5248.38'
 Set quarter section corner 2624.19' proportional.

(c) In the plan view drawing below, provide reference ties to at least 4 witness monuments, or, if the location is within a municipality, to at least 2 witness monuments. (Witness monuments shall be made of concrete, natural stone, iron or other equally durable material).

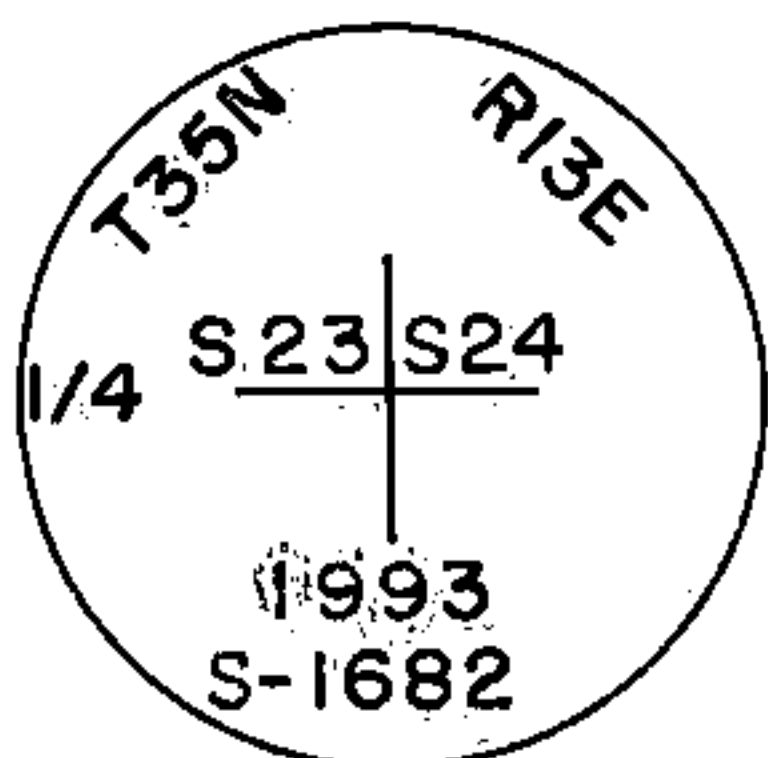
Describe witness monuments:

(d) Show a plan view drawing depicting the relevant monuments and reference ties which is sufficient in detail to enable accurate relocation of the corner monument if the corner monument is disturbed. Indicate north.

No Bts available set four (4) 1" iron pipe for Ref. Mon.s
 (1) West--45.61' (2) S61W --47.61'
 (3) S16W 40.36' (4) S27E ---42.04'
 Corner sets in small pond



Monument Set
 2-1/4" Forest county alum. Mon.
 With 3-3/4' alloy cap



REGISTER'S OFFICE
 Forest County, Wis.
 Received for record this 3rd day
 of MAY A.D., 1995 at
11:15 o'clock A.M. and recorded
 in Vol. CORNER RESTORATIONS
 page P-21, T35 N 13
Dual Hechlerman
 Register of Deeds

43513232000

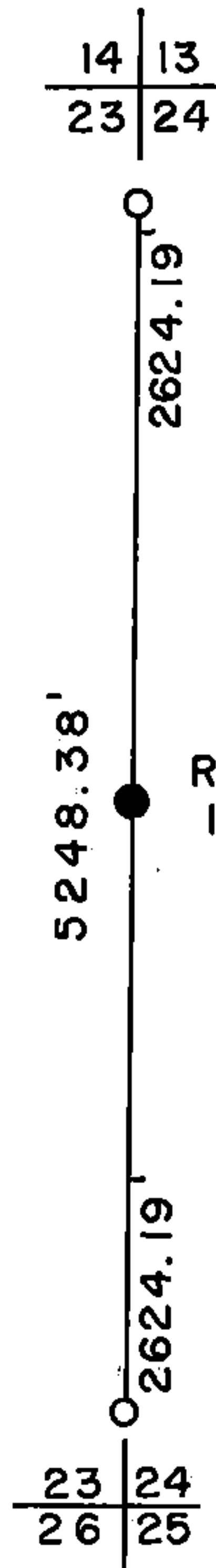
County File No. _____

(e) Describe an material discrepancy between the location of the corner as restored or reestablished and the location of that corner as previously restored or reestablished by distance and direction. Show the discrepancy on the plan view drawing under (d), above. Show the distances between the corner as previously restored or reestablished and (1) the corner as restored or reestablished, and (2) to at least 2 of the witness monuments shown on the drawing in (d), above.

(f) Was the corner restored through acceptance of (1) an obliterated evidence location, or, (2) a found perpetuated location?

(g&h) Was the corner reestablished through lost corners proportionate methods? If so, show the method, including the directions and distances to other public land survey corners used as evidence or used for proportioning in determining the corner location?

Proportionate method



(i) I, Glen Barker
 (type or print name) certify that the corner location shown on this record was determined by me or under my direction and control and that this U.S. Public Land Survey Monument is correct and complete to the best of my knowledge and belief.



Glen Barker

5/3/95

23 35 13E

State of Wisconsin

County of FOREST

ss. RESTORATION OF LOST ORIGINAL GOVERNMENT SURVEY CORNER.

I NEAL SPERHAKE, do hereby certify that on the SEVENTH day of OCTOBER, 19 64, I established the WEST QUARTER SECTION CORNER OF SECTION 24, TOWNSHIP 35 NORTH, RANGE 13 EAST, Fourth Principal Meridian, as described hereon.

History: This corner was established during the original survey of this township, as noted in the original field notes for the original survey of T35N-R13E, 4th. p.m.

Description of monument and accessories I established to perpetuate the location of this corner:

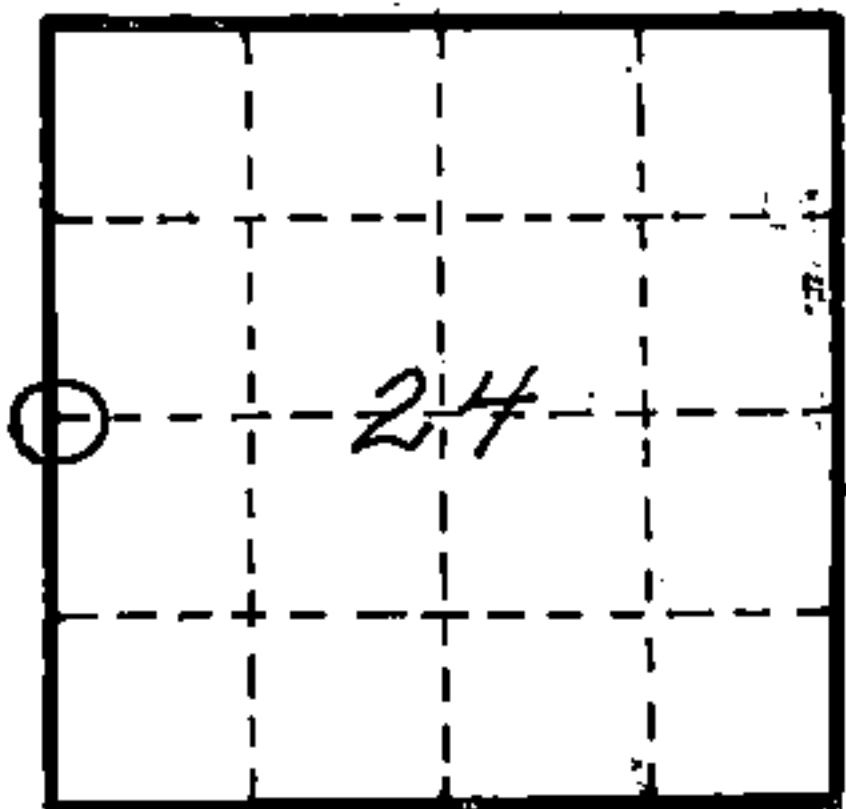
At the point determined for the location of the corner I emplaced a:

GALVANIZED IRON PIPE, THREE FEET LONG, ONE INCH IN DIAMETER, WITH ALUMINUM CAP DENOTED AS, "KIMBERLY CLARK CORP. T35N 1/4 BTWN. 23 & 24 R13E SPERHAKE RLS 463 10/7/64."

The pipe is witnessed by:

- Maple 8 West 89 links. (SCRIBED 1/4 S 23 NBT).
- W. Birch 6 S 27° E 113 links. (SCRIBED 1/4 S 24 NBT).

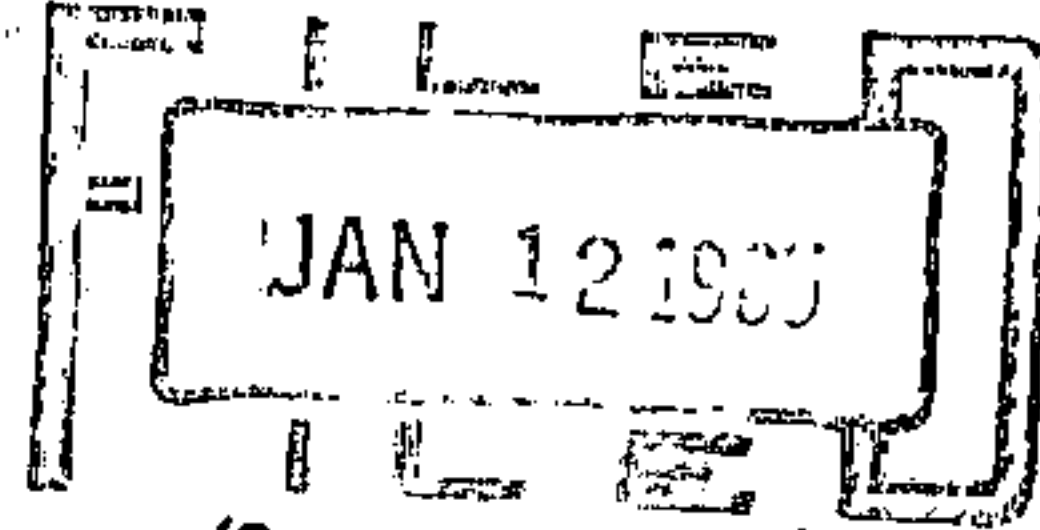
Description as to how corner was located: No evidence of the original corner present. Since both the section corners, 1/2 mile north and south respectively, have been previously established with a distance between them of 79.62 chains, the quarter corner was set 39.81 chains from either corner and on a straight line between them.



O = Corner monument restored

89596

REGISTRAR'S OFFICE
FOREST COUNTY, WIS.



Anna Peterson
Register of Deeds

Resident witnesses _____

Dated at Crandon, Wisconsin, this 12th day of January, 19 65.

Signature *Neal Sperhake*

Title Registered Land Surveyor Registration No. 463

~~Office of~~ Forest County of Wisconsin, I hereby certify that the within instrument was ~~filed in~~ filed in ~~office for record~~ on the 12th day of January 1965, and was ~~filed in~~ filed in ~~County Records~~ signed and sworn to before me.

Surveyor's Seal

Signature *Anna Peterson* Title Notary Public

43513 23 2000

Index No. P21