

CERTIFIED LAND CORNER RESTORATION

Index No. R-19

R14

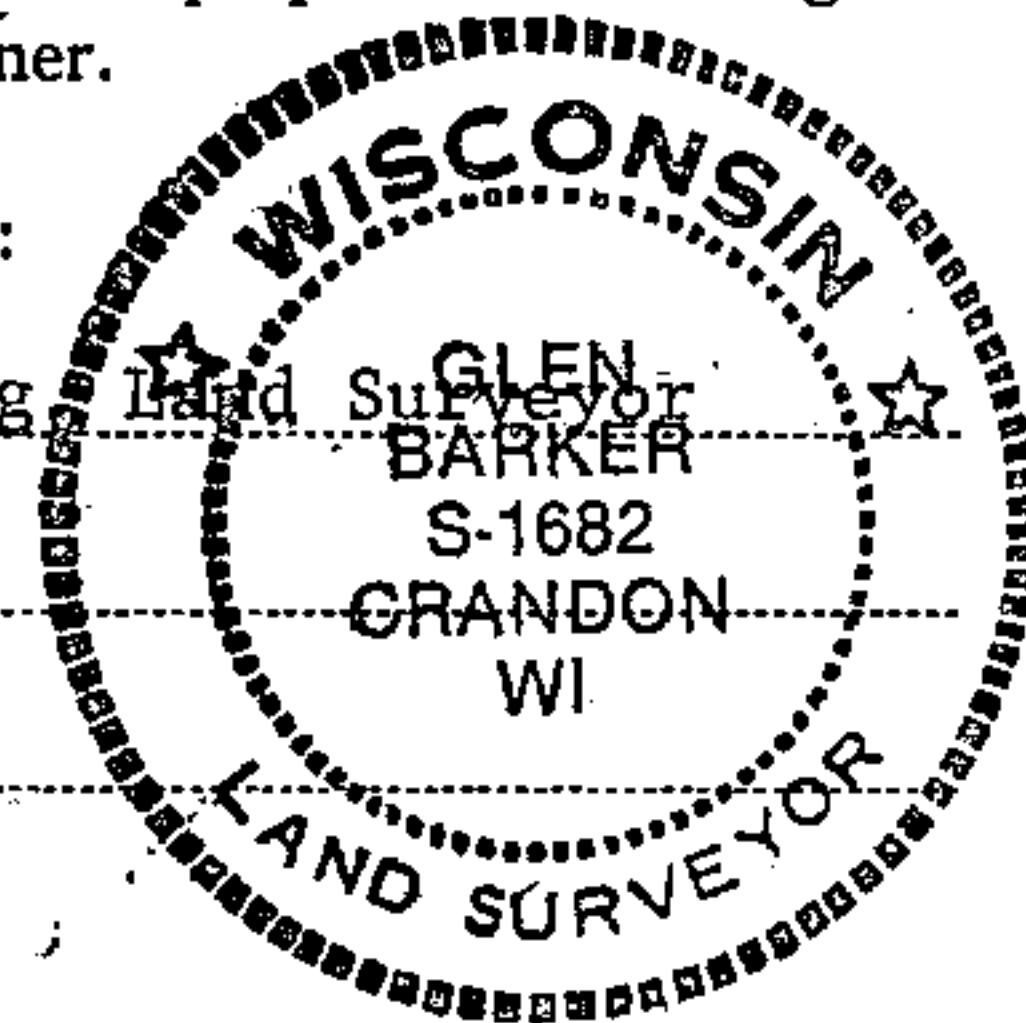
State of Wisconsin }
County of Forest } ss.

I, Glen Barker, do hereby certify that on the 13th day of October, 19 82, I found established ~~at the~~ W 1/16 corner of sections 22 & 27 Township 35, North, Range 13 East, Fourth Principal Meridian, as described hereon; and that from this evidence I established a new monument and accessories as described hereon to perpetuate the original location of this corner.

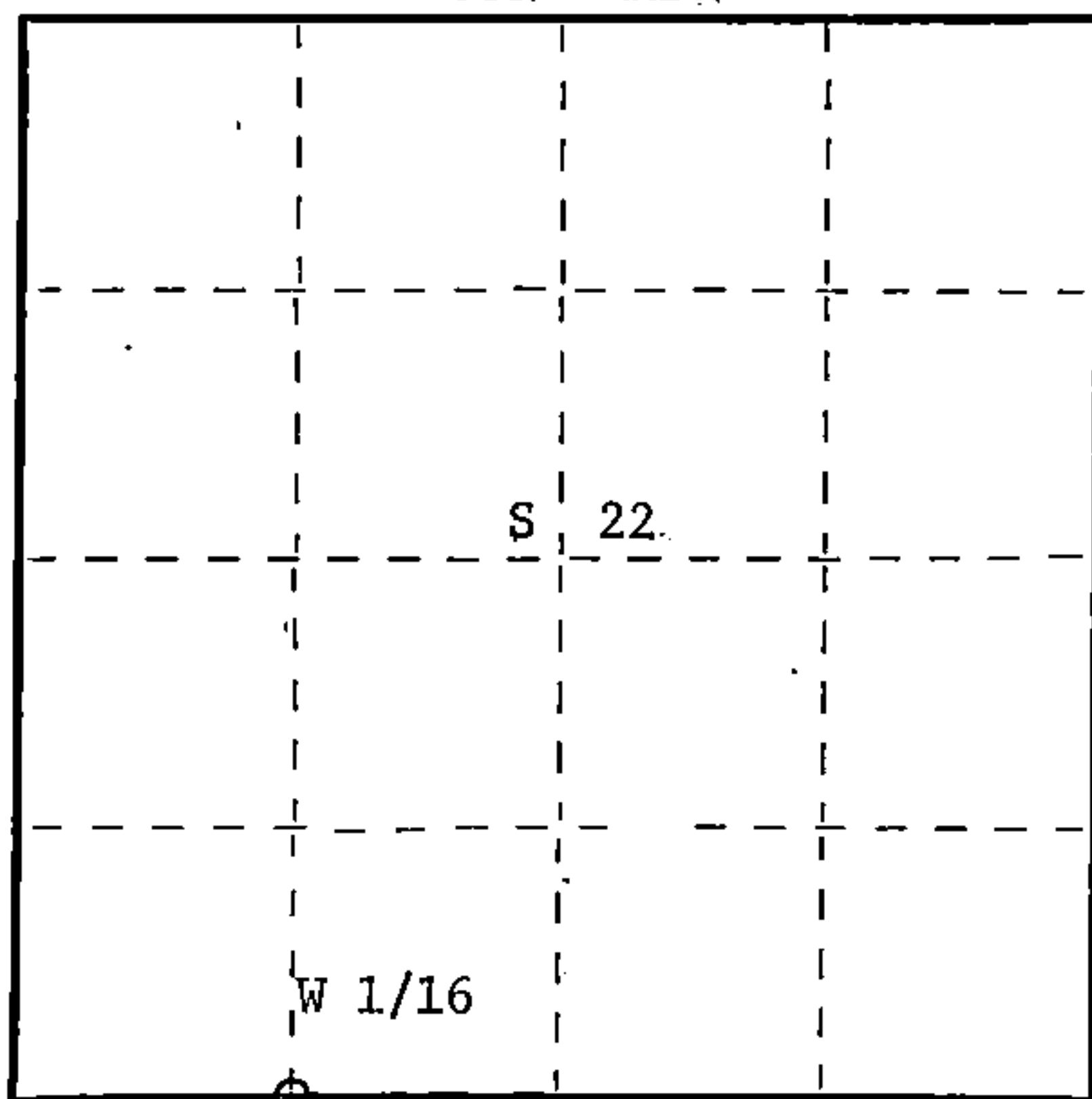
Resident witnesses:

J. Claflin, Reg.

H. Wagoner



T35N R13E



○ = Corner monument restored.

History of original corner establishment:

No evidence of any previous corner.

Description of corner evidence found:

Total distance from section corner 21-22-27-28 to 1/4 corner between sections 22 & 27 is 2714.34 feet at bearing S86-17-04E. Set W 1/16 1357.17 intermediate.

Description of monument and accessories I established to perpetuate the original location of this corner.

Set a 1" iron pipe with 2" diameter alloy cap, stamped: Monument projects 18" above ground.

Marked NBT's:

Sugar 5" N24E 11.15 feet
Sugar 6" N83W 7.44 feet
scribed 1/16 B.T.

S1682
T35N R13E
W 1/16 S+22
S+27
CPI 1982

Dated at Rhinelander, Wis., this 30th day of December, 19 82

Signature Glen Barker Title Registered Land Surveyor Registration No. S-1682
(County Surveyor, Registered Land Surveyor, or other duly authorized official)

Office of Register of Deeds, County of Forest, I hereby certify that the within instrument was filed in this office for record on the 16th day of February, 19 83 at 10:30 o'clock A. M.

Eugene Stetson
(Register of Deeds)
By _____ Deputy

DOCUMENT NO. **122918**

FORM 985 M. C. MILLER CO., MILWAUKEE

43513220030