

CERTIFIED LAND CORNER RESTORATION

Index No. **R-24**

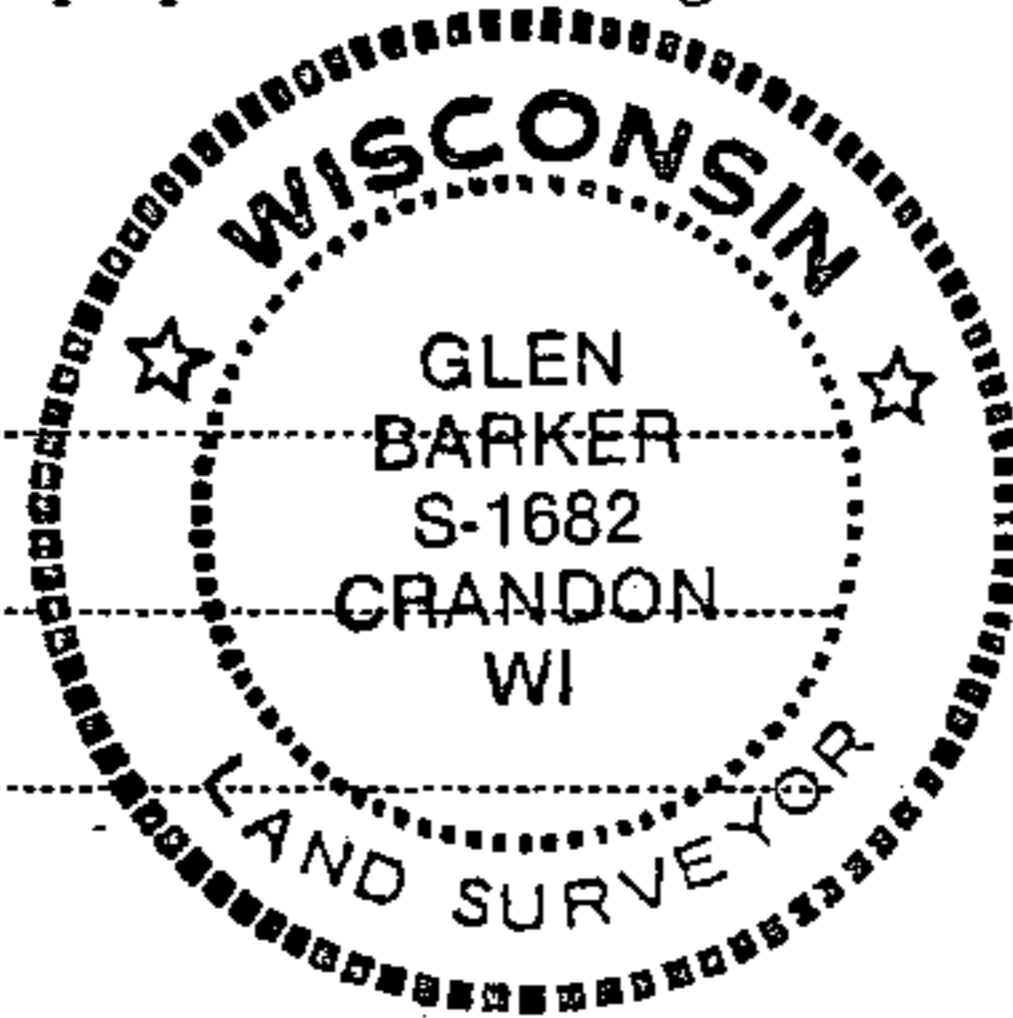
State of Wisconsin }  
County of Forest } ss.

I Glen Barker, do hereby  
certify that on the 15th day  
of September, 19 84, I found  
evidence of the NE 1/16  
corner of Section 13  
Township 35, North, Range  
13 East, Fourth Principal Meridian,  
as described hereon; and that from this evidence  
I established a new monument and accessories  
as described hereon to perpetuate the original  
location of this corner.

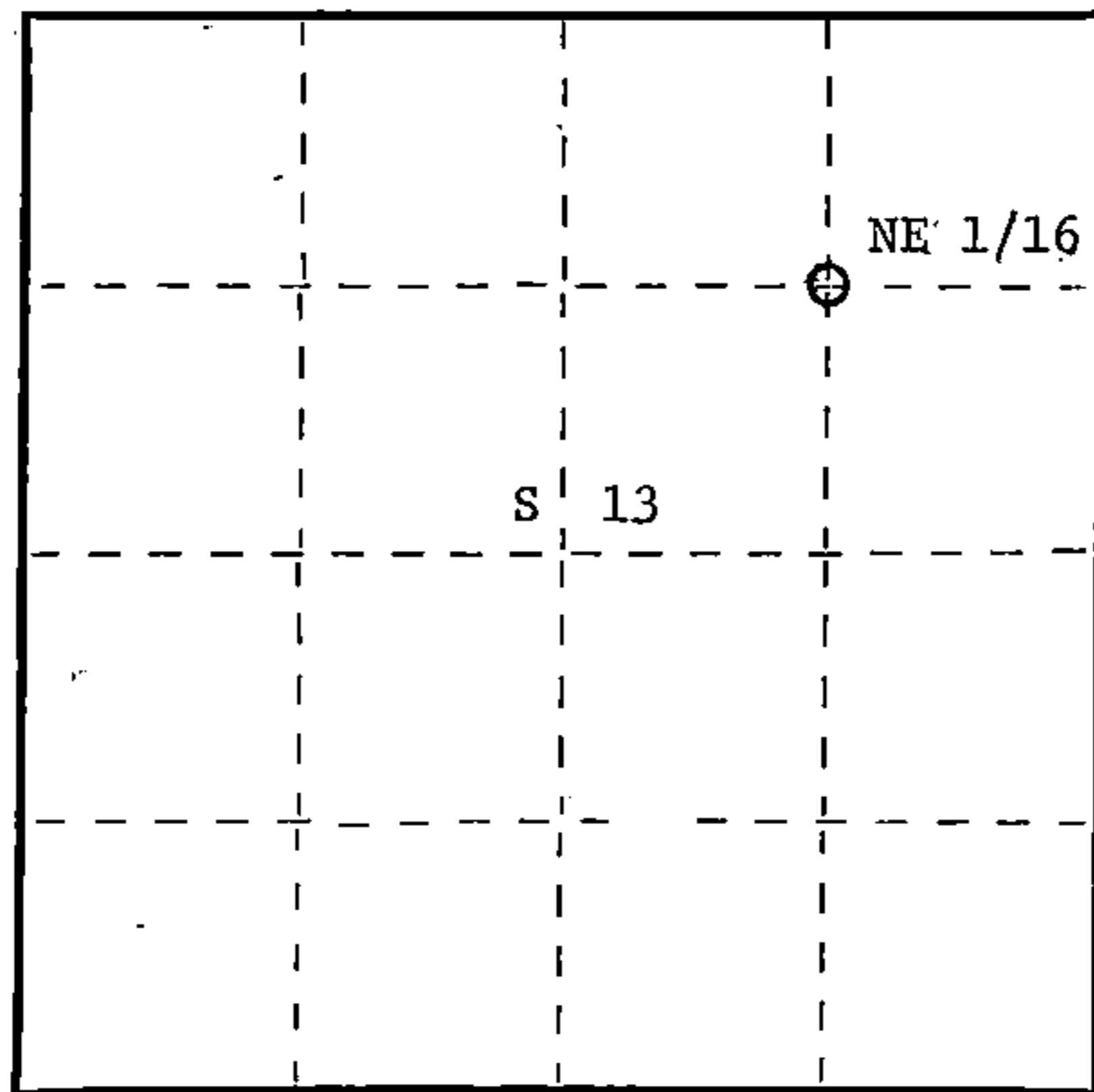
Resident witnesses:

N. Spiess

H. Wagoner



T35N R13E



○ = Corner monument restored.

History of original corner establishment:  
3"x3" wood post set by Kimberly Clark Corp. in 1964.  
Post set by compass and is not of record.

Description of corner evidence found:

Corner established by subdivision of the NE 1/4.  
Location of the NE 1/16 is 1294.05' of NC 1/16 and 1293.74' of EC 1/16.

3"x3" wood post bears S35W 2.0'.

Description of monument and accessories I established to perpetuate the original location of this corner.

Set a 1" iron pipe with 2" diameter alloy cap stamped: S1682

Monument projects 24" above ground. T35N

Marked NBTs

Sugar 6" N61E 13.33'

Sugar 5" N11W 14.68'

NE 1/16 S 13

R13E

CPI - 1984

Dated at Rhineland, Wis., this 12th day of October, 19 84

Signature Glen Barker Title Registered Land Surveyor Registration No. 1682

(County Surveyor, Registered Land Surveyor, or other duly authorized official)

Office of Register of Deeds, County of Forest, I hereby certify that the within  
instrument was filed in this office for record on the 20th day of December, 1984  
at 1:15 o'clock P. M.

Eugene Staszynski  
(Register of Deeds)

Document Number **126952**

By \_\_\_\_\_ Deputy

FORM 985 R. C. MILLER CO., MILWAUKEE

43513133010