

CERTIFIED LAND CORNER RESTORATION

Index No. **K-25**

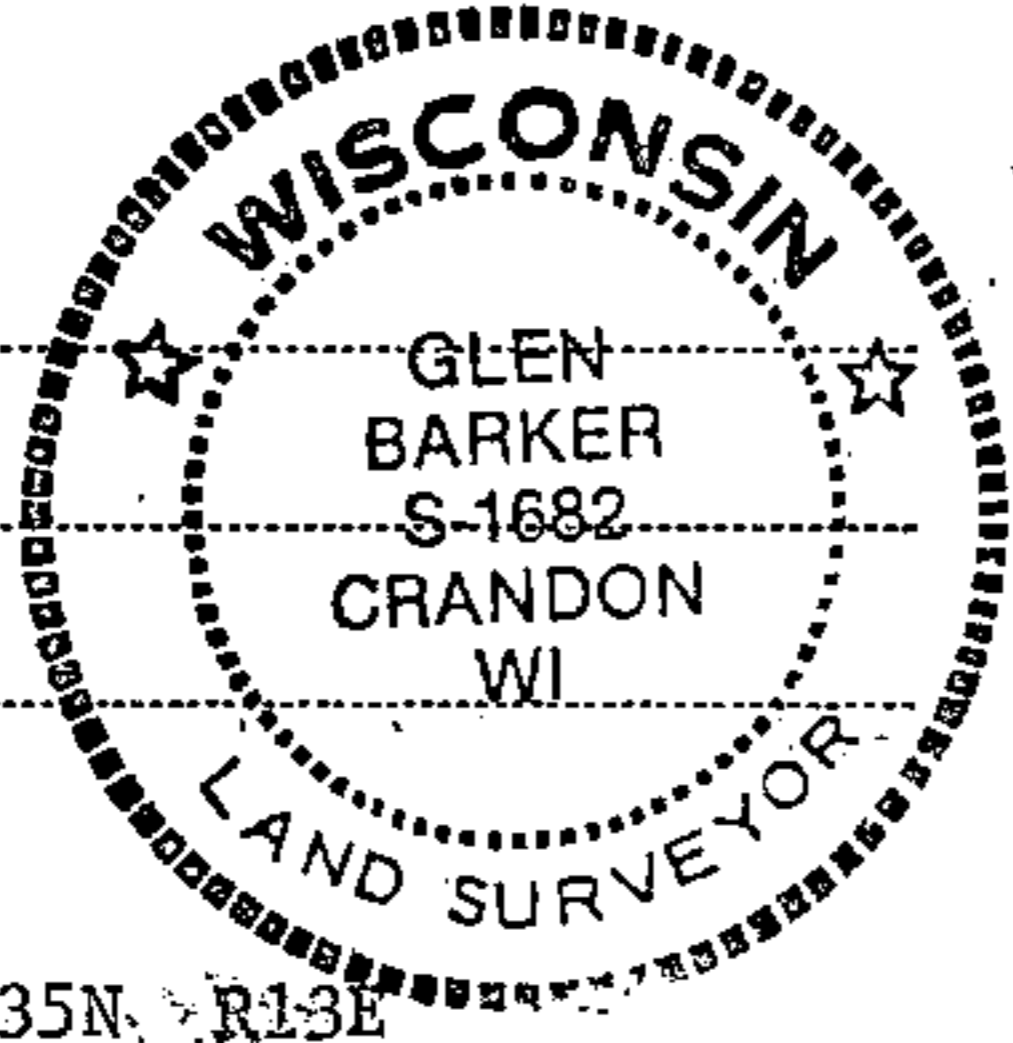
State of Wisconsin }
County of Forest } ss.

I Glen Barker, do hereby certify that on the 16th day of September, 1984, I found evidence of the N 1/16 corner of Sections 13 & 18 Township 35 North, Range 13 & 14 East, Fourth Principal Meridian, as described hereon; and that from this evidence I established a new monument and accessories as described hereon to perpetuate the original location of this corner.

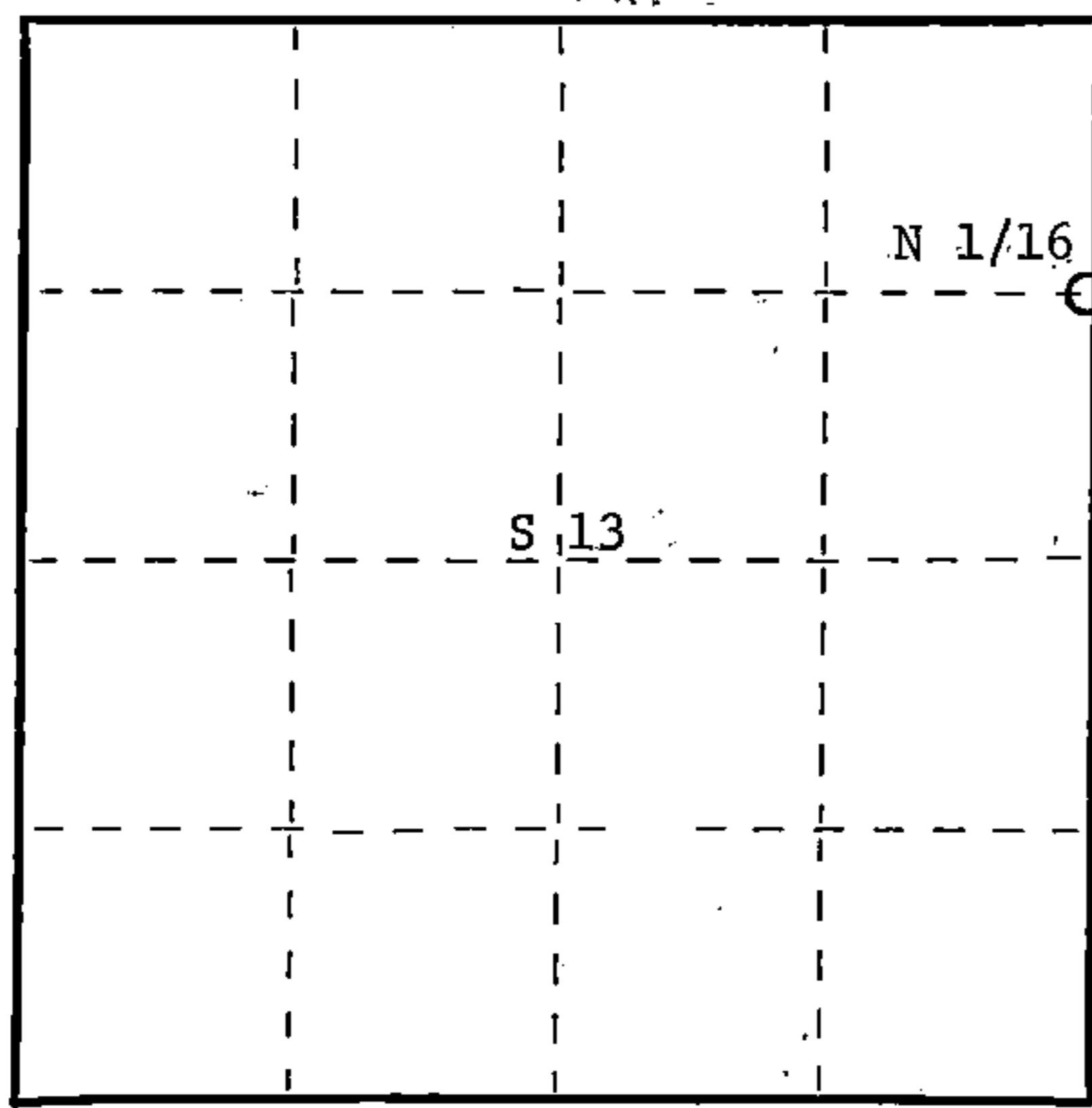
Resident witnesses:

N. Spiess

H. Wagoner



FORM 985 R. C. MILLER CO., MILWAUKEE



○ = Corner monument restored.

History of original corner establishment:
A 2" iron pipe by Connor Forest Ind.

Description of corner evidence found:

Total distance from Section corner 12-13 - 7-18 T35N R13 and 14E to 1/4 corner between sections 13 & 18 is 2573.55'.
Set N 1/16 1286.77' intermediate.
2" iron pipe bears S67-13.50E 6.49'

Description of monument and accessories I established to perpetuate the original location of this corner.

Set a 1" iron pipe with 2" diameter alloy cap stamped: S1682
Monument projects 18" above ground. R13E R14E
S 13 S18.

Marked NBTs
Cedar 9" N72E 5.54'
Cedar 15" S26E 23.29'

T35N
CPI - 1984

Dated at Rhinelander, Wis., this 12th day of October, 1984

Signature *Glen Barker* Title Registered Land Surveyor Registration No. 1682
(County Surveyor, Registered Land Surveyor, or other duly authorized official)

Office of Register of Deeds, County of Forest, I hereby certify that the within instrument was filed in this office for record on the 20th day of December, 1984 at 1:15 o'clock P. M.

Eugene Stategny
(Register of Deeds)

By _____ Deputy

Document Number **126953**

43513133000