

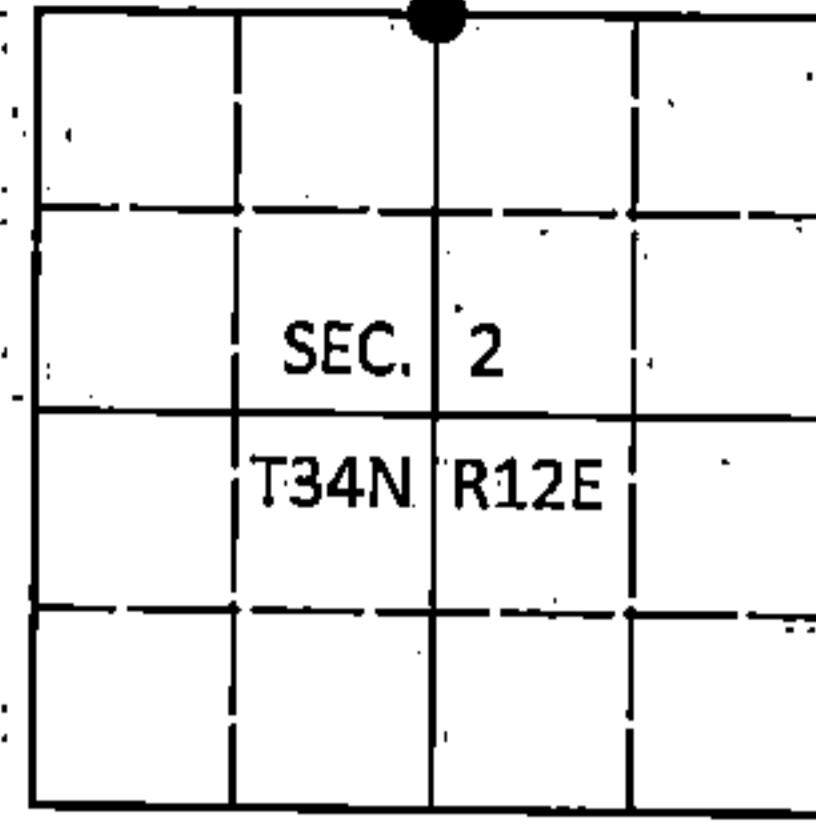
225154

U.S. PUBLIC LAND SURVEY MONUMENT RECORD

Note: This form is intended and designed to fulfill all requirements of Wisconsin Administrative Code, Chapter A-E 7.08 U.S. Public Land Survey Monument Record (3)(a-l):

(a) CORNER LOCATION
1/4 Cor. of Secs. 2 & 35
Township 34 & 35 North
Range 12 East of the 4th P.M.
Town of Ainsworth/Nashville.
County of Langlade/Forest

WISCRS - Langlade County
N: 458,735.53 USft
E: 671,448.80 USft
WISCRS - Forest County
N: 532,295.91 USft
E: 822,808.74 USft
Datum: NAD 83(2011)
GNSS Method: WISCORS RTN



(b) HISTORY OF ORIGINAL CORNER ESTABLISHMENT

Original Surveyor: Alfred Millard

Original Accessories:

Date of Survey Commenced: August, 1857
Completed: August, 1857

Hemlock 15" N24°E, 14 lks.
Hemlock 10" S26°W, 10 lks.

(b)(f)(g)(h) Description of monument found at this corner and if it was accepted, state all evidence (material, testimonial, occupational, plats, records, other monuments) used as a basis for accepting. If not accepted or if nothing was found, state evidence used as basis for establishing location. If re-established through lost corner proportionate methods, indicate all monuments, distances and directions used to establish. Indicate type of monument and sign post found or set.

This is a perpetuation of a previous USPLS Monument Record by Thomas R. Arnott, RLS dated November 10, 1975 and filed in the office of the Forest County Register of Deeds. A complete history of the corner can be found on the previous monument record. I accept the previous location as a true and faithful perpetuation or reestablishment of the original corner location and further perpetuate it as follows.

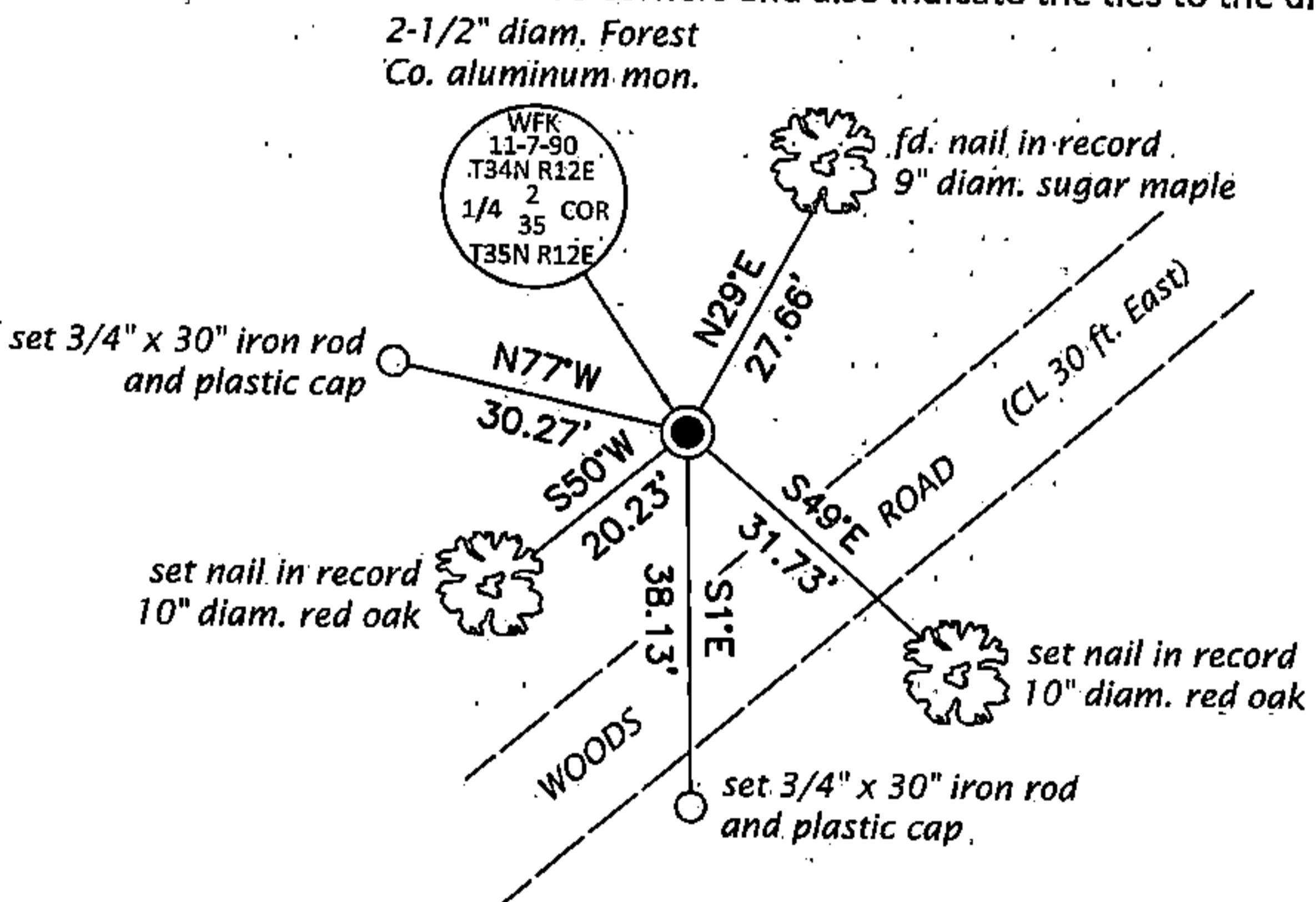
This is a perpetuation of a previous USPLS Monument Record by William F. Kelly, RLS dated November 9, 1990 and filed in the office of the Langlade County Surveyor. A complete history of the corner can be found on the previous monument record. I accept the previous location as a true and faithful perpetuation or reestablishment of the original corner location and further perpetuate it as follows.

To augment the record:

September 8, 1982: Survey of Sec. 35 for Exxon by Stuart L. Foltz, RLS indicates corner is marked by a Forest County aluminum monument with the following BT's: 8" maple N26°E, 27.2', 8" oak S55°E, 5.5', 4" oak S50°W, 20.4'.

October 23, 2016: I found and accepted the record monument, a 2-1/2" diam. aluminum pipe with a 3-1/4" diam. Forest Co. aluminum cap flush in a ring of stone. I set a DEEP-1 magnet adjacent to the monument. The record bearing trees at S16°W and S55°E are dead or gone. I found or established accessories as shown below. I found a white vinyl sign bearing Northwest, 1 ft.

(c)(d)(e) Plan view of corner with ties to at least 4 witness monuments. If in disagreement with previously established corner, show the distances between the two corners and also indicate the ties to the disputed.



FOREST COUNTY, WI
CORTNEY BRITTEN CLEEREMAN
REGISTER OF DEEDS
RECEIVED FOR RECORD

APR 27 2018

Time: 10:00 A.M.
Vol.: Corner Restoration
Page Number: 2-19



(i) I, Jeffrey W. Austin, Professional Land Surveyor No. S-1885, hereby certify that the corner location on this record was determined by me or under my direction and control and that this U.S. Public Land Survey Monument Record is correct and complete to the best of my knowledge and belief.

Handwritten signature of Jeffrey W. Austin.

May 4, 2017

3512350020 (INDEX NO. A-19)

43512350020

CERTIFIED LAND CORNER RESTORATION

Index No. 219

State of Wisconsin }
County of Forest } ss.

History of original corner establishment:

Hemlock 15 N24E 14 Lks.
Hemlock 100W S26W 10 Lks.

I Thomas R. Arnott, do hereby certify that on the 22nd day of September, 19 75, I found evidence of the 1/4 corner of sections 2 & 35 Township 34 & 35, North, Range 12 E, Fourth Principal Meridian, as described hereon; and that from this evidence I established a new monument and accessories as described hereon to perpetuate the original location of this corner.

Description of corner evidence found:

wood post found

Resident witnesses:

Herbert Wagoner

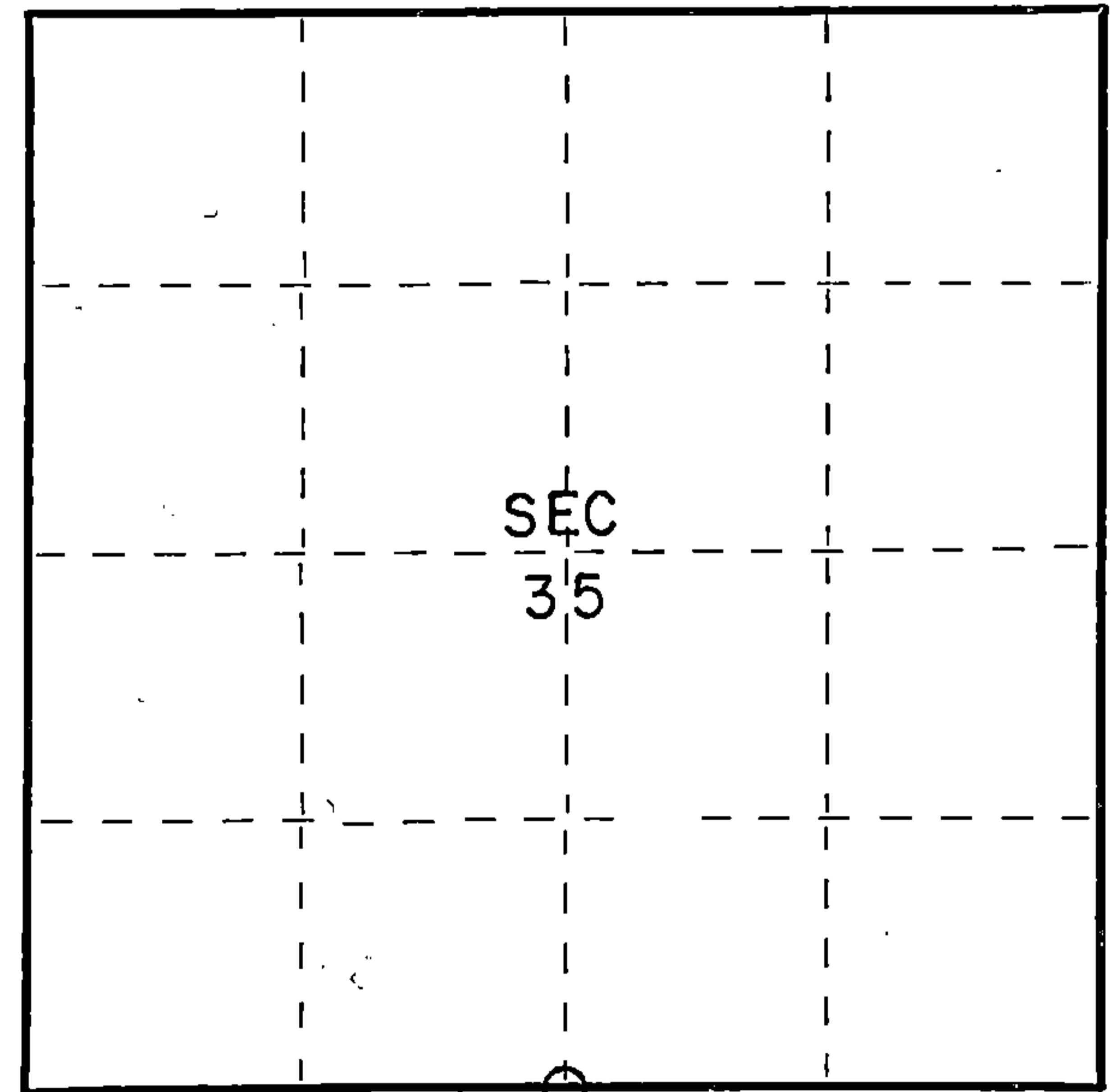
Description of monument and accessories I established to perpetuate the original location of this corner.

set new Forest County aluminum monument

Ties:

Maple 8" N28E 27.75 feet
Oak 8" S55E 6.08 feet

FORM 985 R. C. MILLER CO., MILWAUKEE



○ = Corner monument restored.



43512 350020

Dated at Crandon, Wis., this 10th day of November, 19 75.

Signature Thomas R. Arnott Title Land Surveyor Registration No. S-887
(County Surveyor, Registered Land Surveyor, or other duly authorized official)

Office of Register of Deeds, County of Forest, I hereby certify that the within instrument was filed in this office for record on the 10th day of November, 19 75 at 3 o'clock P. M.

EUGENE STATEZNY
(Register of Deeds)

Document Number 108188

By Eileen Schmidt Deputy