

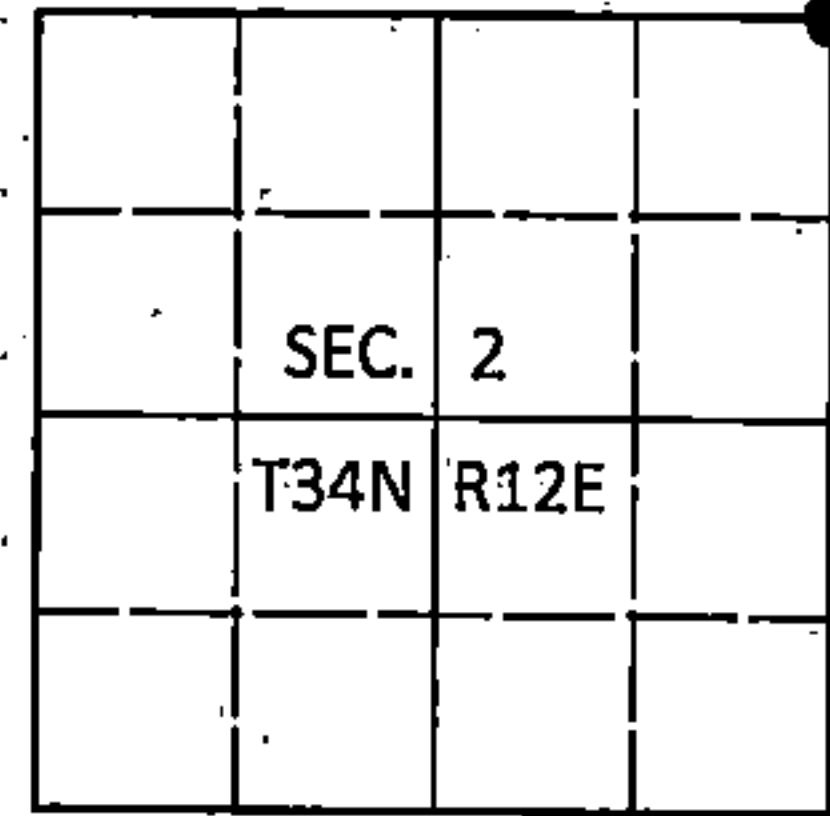
225153

U.S. PUBLIC LAND SURVEY MONUMENT RECORD

Note: This form is intended and designed to fulfill all requirements of Wisconsin Administrative Code, Chapter A-E 7.08 U.S. Public Land Survey Monument Record (3)(a-l).

(a) CORNER LOCATION
Cor. of Secs. 1, 2, 35 & 36
Township 34 & 35 North
Range 12 East of the 4th P.M.
Town of Ainsworth/Nashville.
County of Langlade/Forest

WISCRS - Langlade County
N: 458,743.27 USft
E: 674,073.78 USft
WISCRS - Forest County
N: 532,290.61 USft
E: 825,433.72 USft
Datum: NAD 83(2011)
GNSS Method: WISCORS RTN.



(b) HISTORY OF ORIGINAL CORNER ESTABLISHMENT

Original Surveyor: Alfred Millard

Original Accessories:

Date of Survey Commenced: August, 1857
Completed: August, 1857

Aspen 18" N66°E, 22 lks.
Hemlock 10" N46°W, 37 lks.
Hemlock 10" S59°W, 30 lks.
Sugar 10" S55°E, 3 lks.

(b)(f)(g)(h) Description of monument found at this corner and if it was accepted, state all evidence (material; testimonial, occupational, plats, records, other monuments) used as a basis for accepting. If not accepted or if nothing was found, state evidence used as basis for establishing location. If re-established through lost corner proportionate methods, indicate all monuments, distances and directions used to establish. Indicate type of monument and sign post found or set.

This is a perpetuation of a previous USPLS Monument Record by Stuart L. Foltz, RLS dated June 30, 1977 and filed in the office of the Forest County Register of Deeds. A complete history of the corner can be found on the previous monument record. I accept the previous location as a true and faithful perpetuation or reestablishment of the original corner location and further perpetuate it as follows.

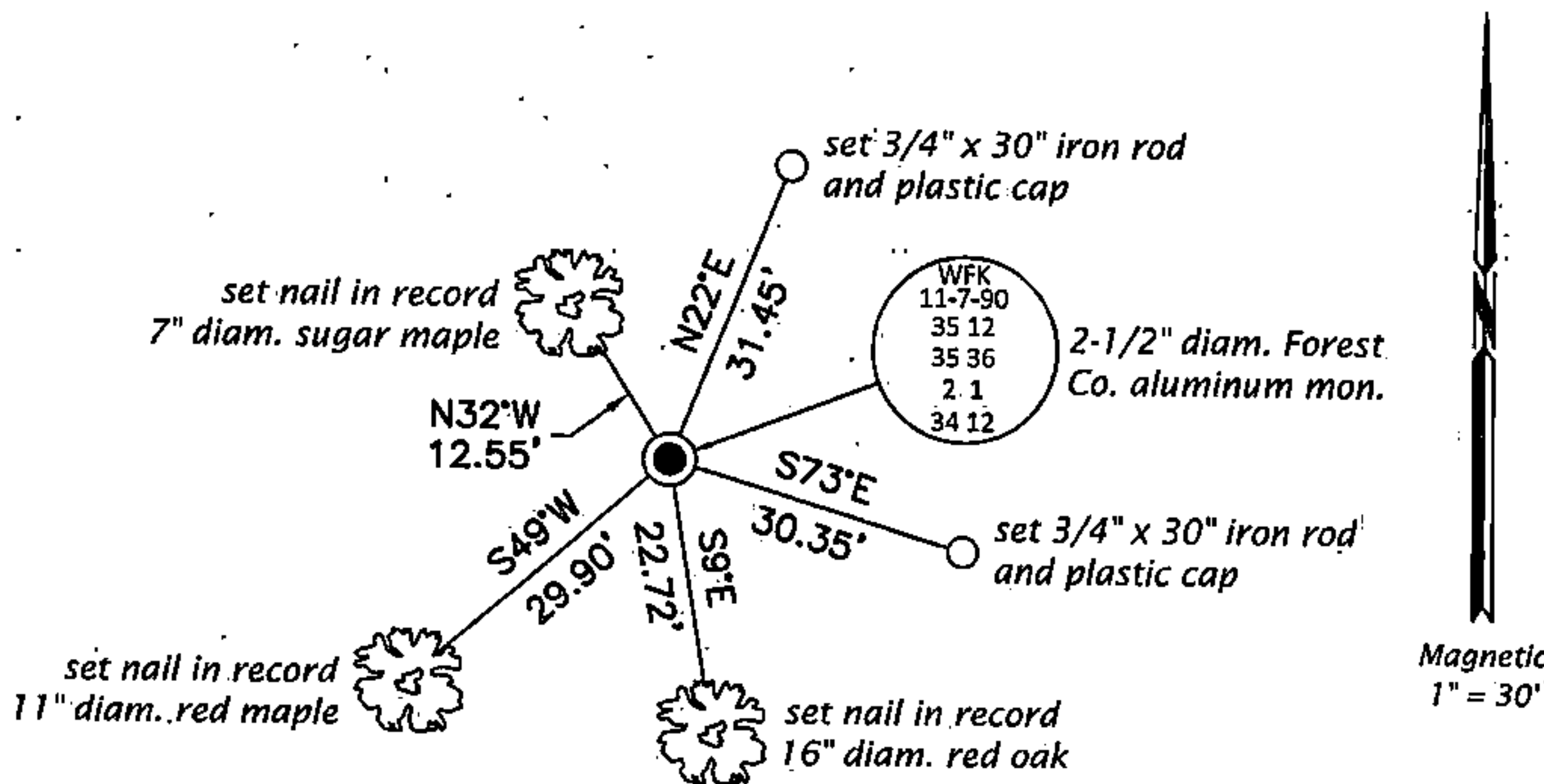
This is a perpetuation of a previous USPLS Monument Record by William F. Kelly, RLS dated November 9, 1990 and filed in the office of the Langlade County Surveyor. A complete history of the corner can be found on the previous monument record. I accept the previous location as a true and faithful perpetuation or reestablishment of the original corner location and further perpetuate it as follows.

To augment the record:

September 8, 1982: Survey of Sec. 35 for Exxon by Stuart L. Foltz, RLS indicates corner is marked by a Forest County aluminum monument with the following BT's: 7" maple N34°E, 7.6', 8" oak S9°E, 22.6', 8" maple S49°W, 29.8'.

October 23, 2016: I found and accepted the record monument, a 2-1/2" diam. aluminum pipe with a 3-1/4" diam. Forest Co. aluminum cap projecting 6" above a ring of stone. I set a DEEP-1 magnet adjacent to the monument. The record birch and NE maple bearing trees are gone. I found or established accessories as shown below. I set a white vinyl sign post bearing Northwest, 1 ft.

(c)(d)(e) Plan view of corner with ties to at least 4 witness monuments. If in disagreement with previously established corner, show the distances between the two corners and also indicate the ties to the disputed.

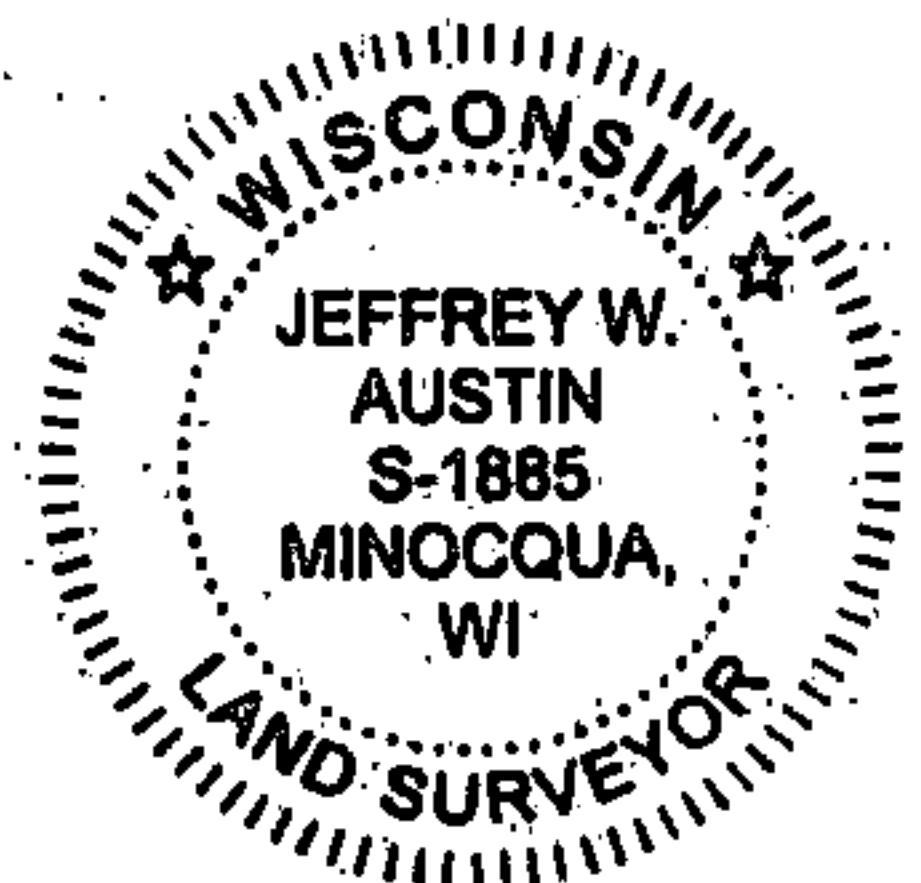


FOREST COUNTY, WI
CORTNEY BRITTEN CLEEREMAN
REGISTER OF DEEDS
RECEIVED FOR RECORD

APR 27 2018

Time: 10:00 A.M.
Vol.: Corner Restoration
Page Number: 221

(i) I, Jeffrey W. Austin, Professional Land Surveyor No. S-1885, hereby certify that the corner location on this record was determined by me or under my direction and control and that this U.S. Public Land Survey Monument Record is correct and complete to the best of my knowledge and belief.



Handwritten signature of Jeffrey W. Austin.

MAY 4, 2017
Date

43512350000

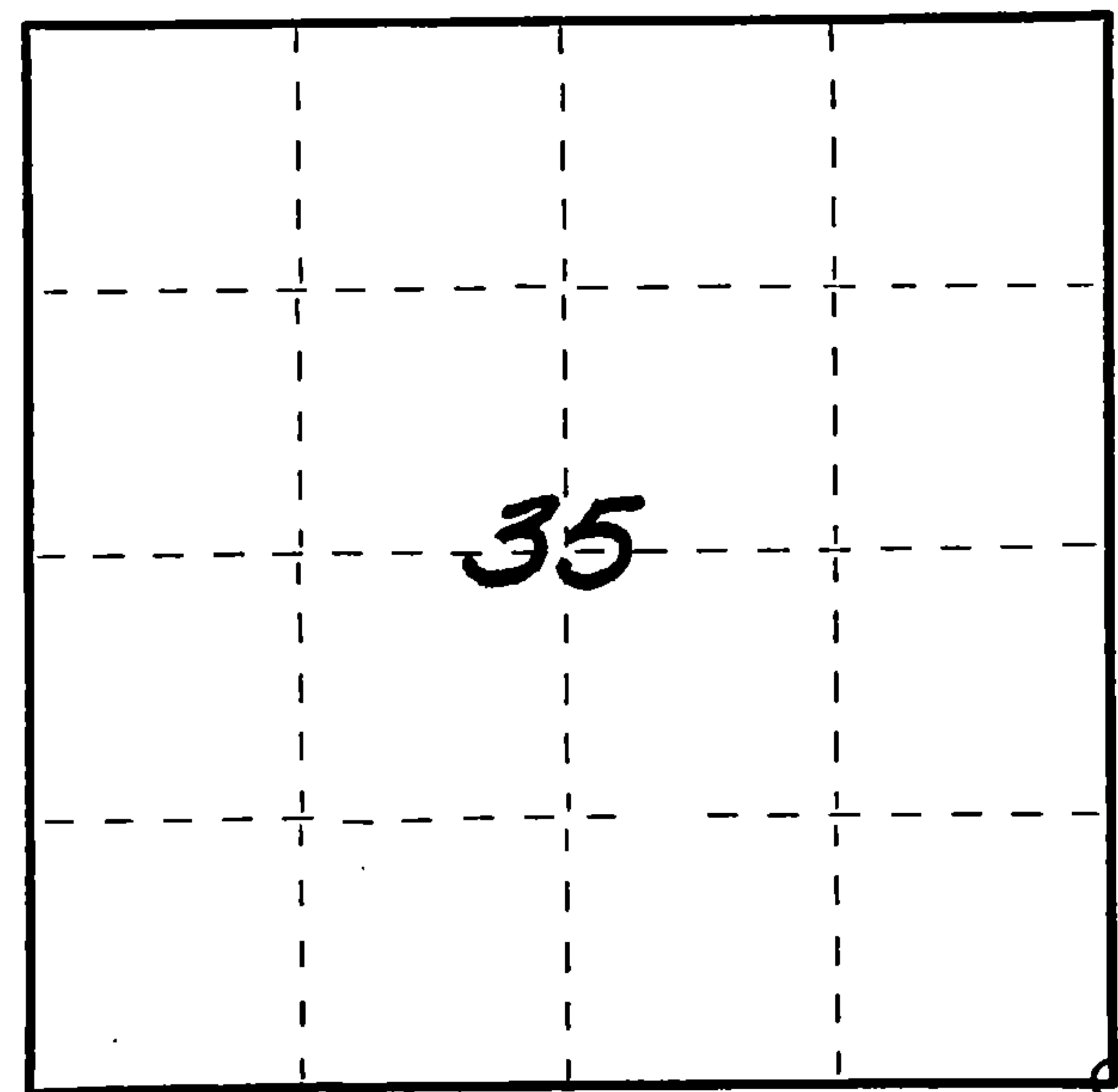
CERTIFIED LAND CORNER RESTORATION

Index No. 221

State of Wisconsin }
County of Forest } ss.

I, Stuart L. Foltz, do hereby certify that on the 11th day of May, 1977, I found evidence of the Southeast Section corner of Section 35 Township 35, North, Range 12 East, Fourth Principal Meridian, as described hereon; and that from this evidence I established a new monument and accessories as described hereon to perpetuate the original location of this corner.

Resident witnesses:



○ = Corner monument restored.

History of original corner establishment:

Date of original survey: September, 1857
Original monument: Wood post
Original bearing trees: 18" Aspen N66°E 22 lks. (14.52')
10" Hemlock N46°W 37 lks. (24.42')
10" Hemlock S57°W 30 lks. (19.80')
10" Sugar S55°E 3 lks. (1.98')

Description of corner evidence found:

3" Maple post found on North edge of recently cut area; the stump of the tree from which this post was cut is nearby, and it is obvious that the post was set not more than 1-2 years previously. Post is almost exactly halfway between the S1/4 of Section 36 and the S1/4 of Section 35, but falls 8.99' South of a straight line between those two one-quarter corners. Pieces of flagging tape hang here and there in the area. Checked for remains of any of the four original bearing trees from this post. Found nothing.

Description of monument and accessories I established to perpetuate the original location of this corner.

Searched the area thoroughly for stumps of original bearing trees; found nothing. Small maple post found is obviously an attempt at a proportioned corner. Established correct corner location by single proportionate measure. Set Forest County monument (2" aluminum pipe with cast aluminum cap). 3" Maple post found bears S0°28'W, 8.99'.

New bearing trees: P.K. nail with disc in 7" Maple N34°E 7.6'
P.K. nail with disc in 8" Oak S9°E 22.6'
P.K. nail with disc in 8" Maple S49°W 29.8'

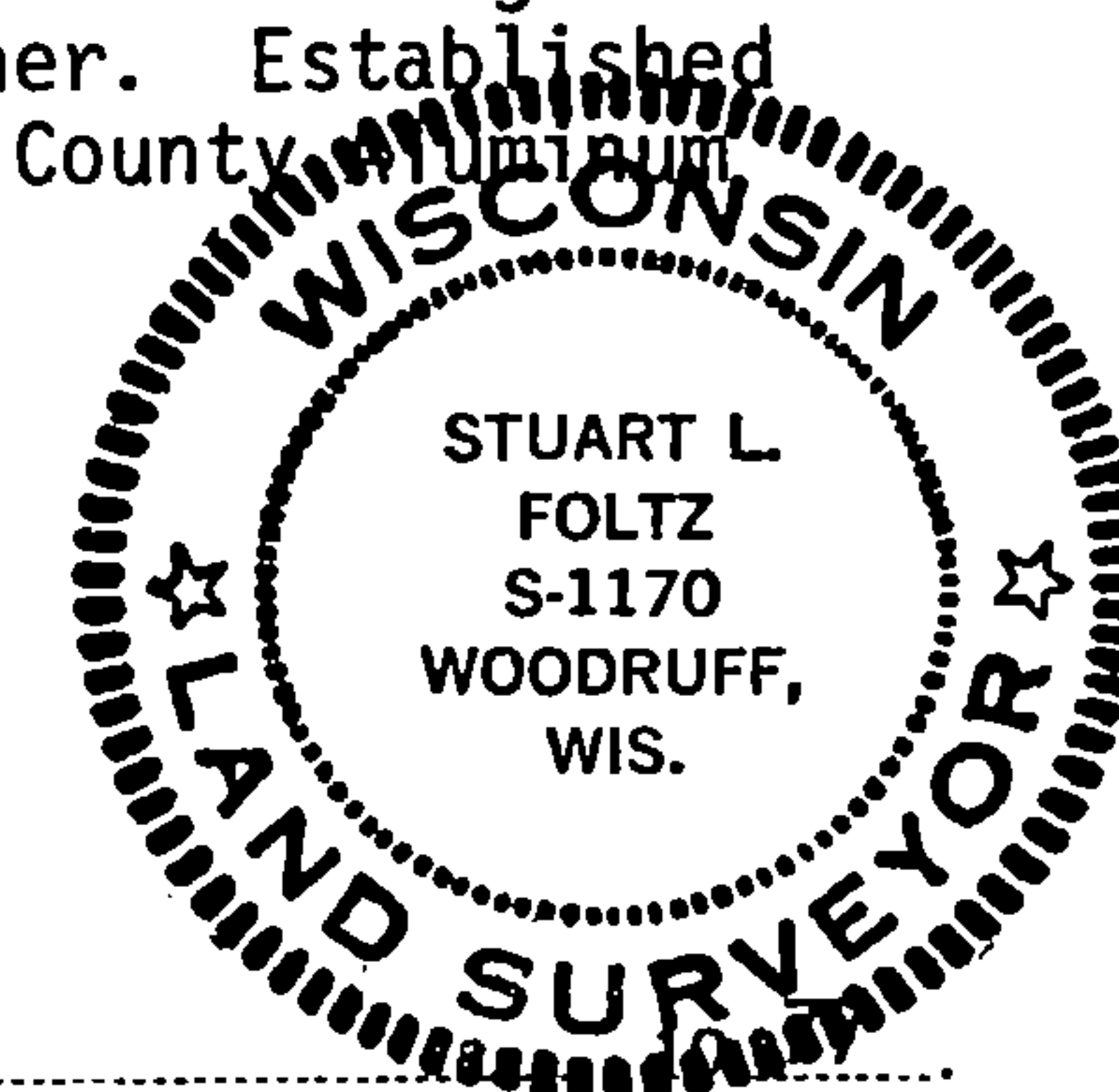
Dated at Minocqua, Wis., this 30th day of June

Signature: Stuart L. Foltz Title: Registered Land Surveyor Registration No. S-1170
(County Surveyor, Registered Land Surveyor, or other duly authorized official)

Office of Register of Deeds, County of Forest, I hereby certify that the within instrument was filed in this office for record on the 6th day of July, 1977, at 9:30 o'clock A.M.

Eugene Staszny (Register of Deeds)

By Deputy



DOCUMENT NUMBER 111809

FORM 985 M. C. MILLER CO., MILWAUKEE

4351235000