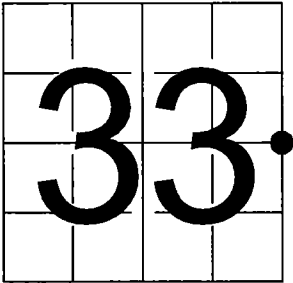


U. S. PUBLIC LAND SURVEY
MONUMENT RECORD

NOTE: This form is intended and designed to fulfill all requirements of Wisconsin Administrative Code, Chapter A-E 7.08 U.S. Public Land Survey Monument Record (3) (a-i)

A-E 7.08(3)(a) Identity of corner:
East 1/4 Corner Section 33,
Township 35 North, Range 12 East
of the Fourth Principal Meridian,
Town of Nashville, Forest County, Wisconsin

WISCRS - FOREST COUNTY
N: 534,972.549 USft (XXX,XXX.XXX)
E: 814,961.871 USft (XXX,XXX.XXX)
Datum: NAD83 (2011)
GNSS Method RTK
GNSS Control WISCRS VRS



The coordinate value shown has been verified by the average of two or more GPS observations at a markedly different time. Coordinates shown in parenthesis are previously published values.

A-E 7.08(3)(b)
Original Surveyor: J.L. Knowlin - June 1865 - July 7, 1865
Y. Pine 6 - N 45° W, 40 Links, Y. Pine 4 - S 32° E, 38 Links

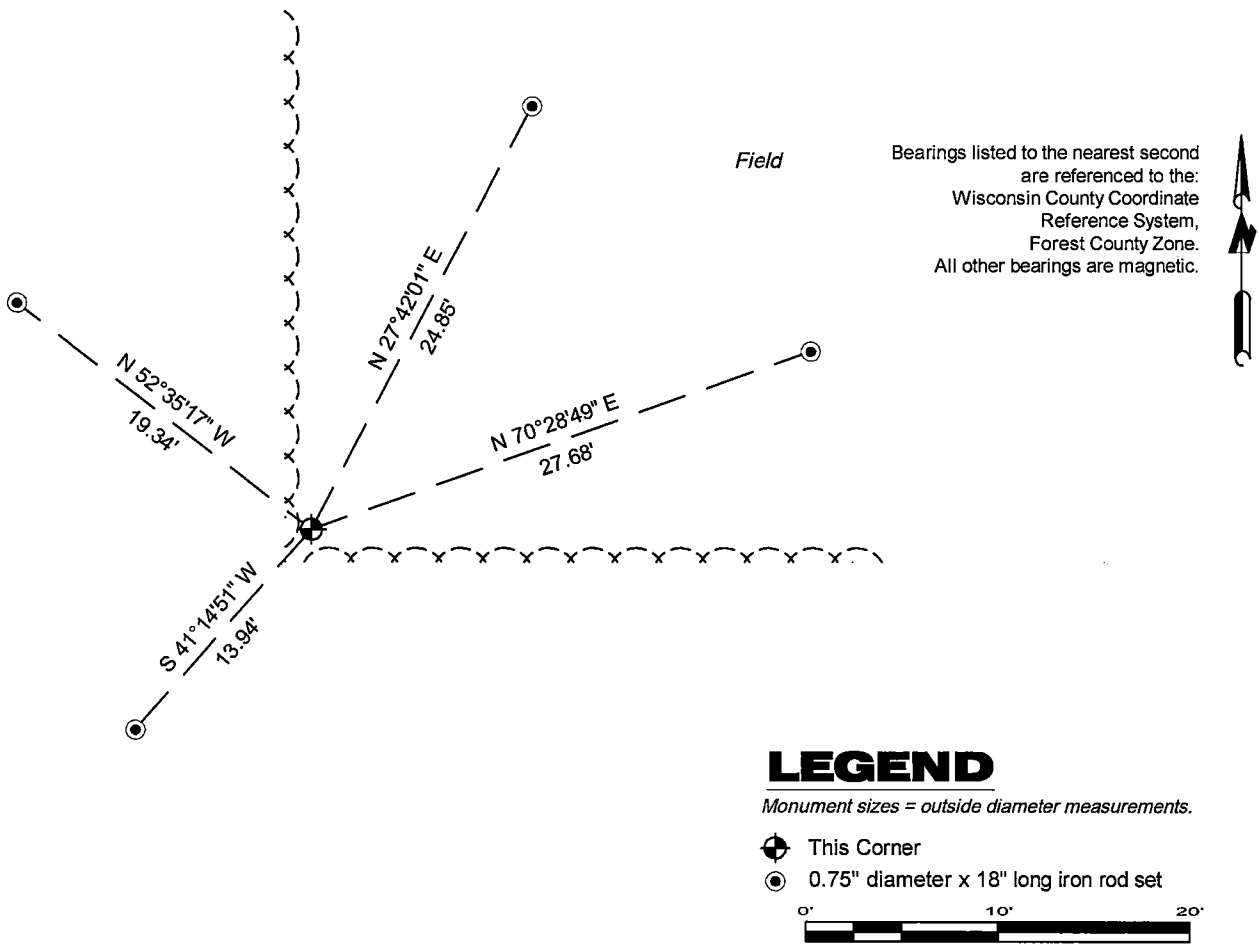
THENCE:

- August 9, 2007 - Surveyor 2197 - Michael A. Trembl - indicates this position as "2" aluminum monument of record" on County Record Map #351234-20070809.
- July 28, 2008 - Surveyor 2517 - Charley G. Brinkmeier - indicates this position as "found alum. mon." on Certified Survey Map #198250.

January 9, 2025 - I found a 2.4" diameter aluminum pipe monument with a 3.25" diameter aluminum cap stamped to identify the corner location (there is no surveyor number or date on the stamp).. The monument is on high ground at the southwest corner of a field with a woods lie to the north and to the east, and is flush with grade. I did not find any witnesses to the monument, and do not know who set the monument. I established 4 new reference monuments as shown below.

NOTE: Certified Land Corner Restoration 435121500 - 13-XY - Surveyor 498 - Philip T. Hansen - suggests that he "previously established 1/4 corner" in his description of corner evidence found for corner 435121500.

A-E 7.08(3)(c)(d) Plan view of corner with references to at least 4 witness monuments.



A-E 7.08(3)(e) 1865 Surveyor set a post, 2007 Surveyor found a 2" aluminum monument, I found a 2.4" diameter aluminum pipe monument with a 3.25" diameter aluminum cap stamped to identify the corner location in 2025.

A-E 7.08(3)(f) I accept this monument in good faith as a FOUND PERPETUATED LOCATION of the corner.

A-E 7.08(3)(g)(h) This corner was not determined through lost-corner-proportionate methods.

A-E 7.08(3)(i) I, Jeffrey L. DeMuth, Professional Land Surveyor No. S-2656, hereby certify that the corner location on this record was determined by me or under my direction and control, and that this U.S. Public Land Survey Monument Record is correct and complete to the best of my knowledge, and belief.

SIGNATURE

Jeffrey L. DeMuth

March 11, 2025

DATE



43512332000

43512332000

X13