

227287

JAN 26 2019

Time: 1:00 P.M.
Vol.: Corner Restoration
Page Number: 2-11

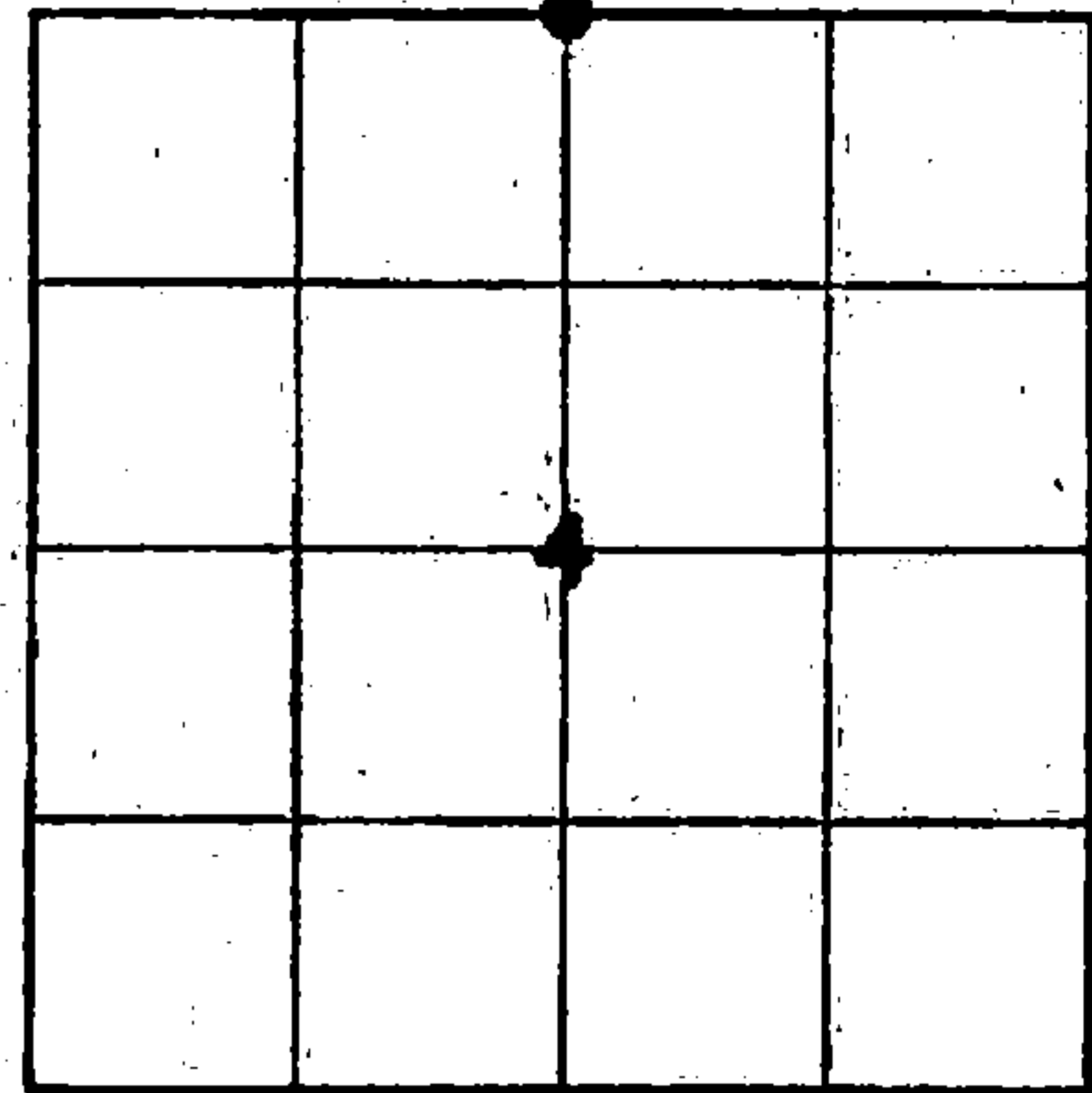
4351233 0020 2018

U.S. PUBLIC LAND SURVEY MONUMENT RECORD

HISTORY OF ORIGINAL CORNER ESTABLISHMENT AND SUBSEQUENT RESTORATION AND DESCRIPTION OF ANY RECORD, MONUMENT OCCUPATIONAL, TESTIMONIAL OR OTHER EVIDENCE CONSIDERED:

THE ORIGINAL CORNER WAS SET BY MILLARD IN 1857 WITH THE ORIGINAL BEARING TREES OF:
10" TAMRACK - N35°W 2 LINKS
8" TAMRACK - S30°E 6 LINKS
1907 - BROOKS RAN THE N-S 1/4 LINE ADDED 2 TIES OF 11" WHITE PINE N82.5°W 27 LINKS & 13" WHITE PINE S38°E 1.3 LINKS HIS 1/4 LINE DISTANCE WAS 81.41 CHAINS
1932 - HUTCHINSON SET AN ADDITIONAL TIE OF CEDAR TREE S52°W 26 LINKS
1930 - CW BORTH THEY SET ADDITIONAL TIES OF 10" TAMRACK STUMP S55°E 16 FEET AND 14" CEDAR S52.5°W 17 FEET. THEIR DISTANCES ACROSS THE NORTH LINE OF SECTION 4 WERE 2677 TO THE NW CORNER AND 2643.8 TO THE NE CORNER.
2008 - WE FOUND A FENCE CORNER INTERSECTION THAT WE USED AS THE LOCATION AND SET A 2" X 30" ALUMINUM CAP PIPE.

● = LOCATION OF CORNER

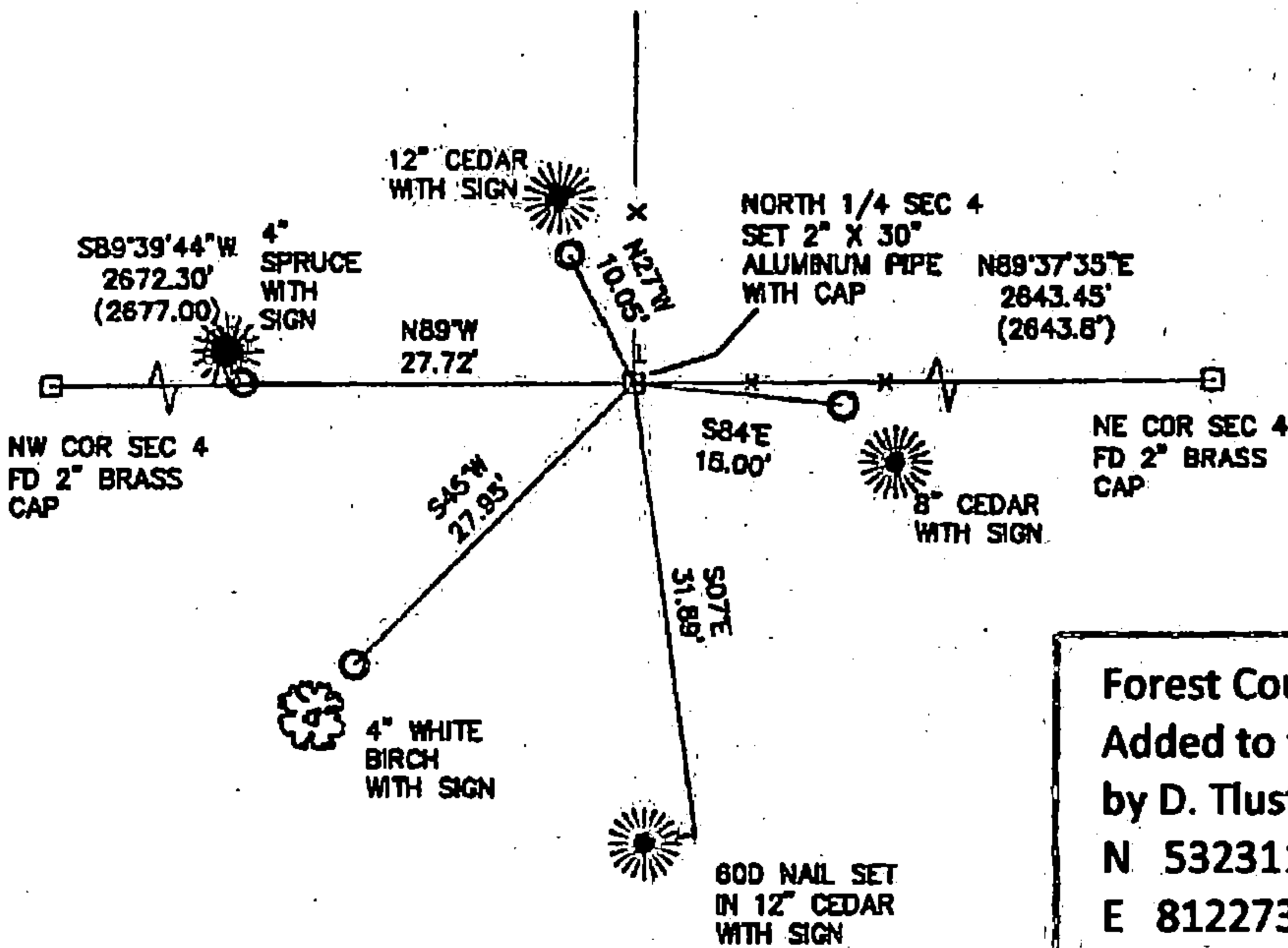


SECTION 4
TOWNSHIP 34 NORTH, RANGE 12 EAST
TOWN OF AINSWORTH
LANGLADE COUNTY, WISCONSIN

CORNER WAS: (CHECK ALL THAT APPLY)

- RESTORED THROUGH ACCEPTANCE OF AN OBLITERATED EVIDENCE LOCATION
- RESTORED THROUGH ACCEPTANCE OF A FOUND PERPETUATED LOCATION
- CONSIDERED A LOST CORNER AND REESTABLISHED THROUGH LOST CORNER PROPORTIONATE METHODS (INCLUDE A PLAN VIEW DRAWING SHOWING DISTANCES AND DIRECTIONS TO OTHER PUBLIC LAND SURVEY CORNERS USED FOR PROPORTIONING AND DETERMINING THE CORNER LOCATION)
- RESTORED OR REESTABLISHED IN A LOCATION THAT DIFFERS FROM A PREVIOUS RESTORATION OR REESTABLISHMENT (INCLUDE A PLAN VIEW DRAWING AND INDICATE WHAT WAS SET AND/OR FOUND)
- CHECK IF THERE IS ADDITIONAL INFORMATION ON BACK

DESCRIBE THE MONUMENT AND ACCESSORIES USED TO PERPETUATE THE LOCATION OF THE CORNER. (INCLUDE A PLAN VIEW DRAWING AND INDICATE WHAT WAS SET AND/OR FOUND) ALSO INCLUDE FOUR TIES TO THE SECTION CORNER AND DESCRIPTION OF THE TIES.



SET 3/4" X 24" IRON PIPES AT ALL TIE LOCATIONS ALL TREES HAVE BEARING SIGNS

BEARINGS REFERENCED TO THE LANGLADE COUNTY COORDINATE SYSTEM

T- 6 FOOT WHITE VINYL POST SET

COORDINATE DATUM NAD 83(2011)

N 458698.95
E 660913.20

Forest County Coordinates NAD83(2011)
 Added to this tie sheet on 11/20/18
 by D. Tlusty
 N 532311.701
 E 812273.115

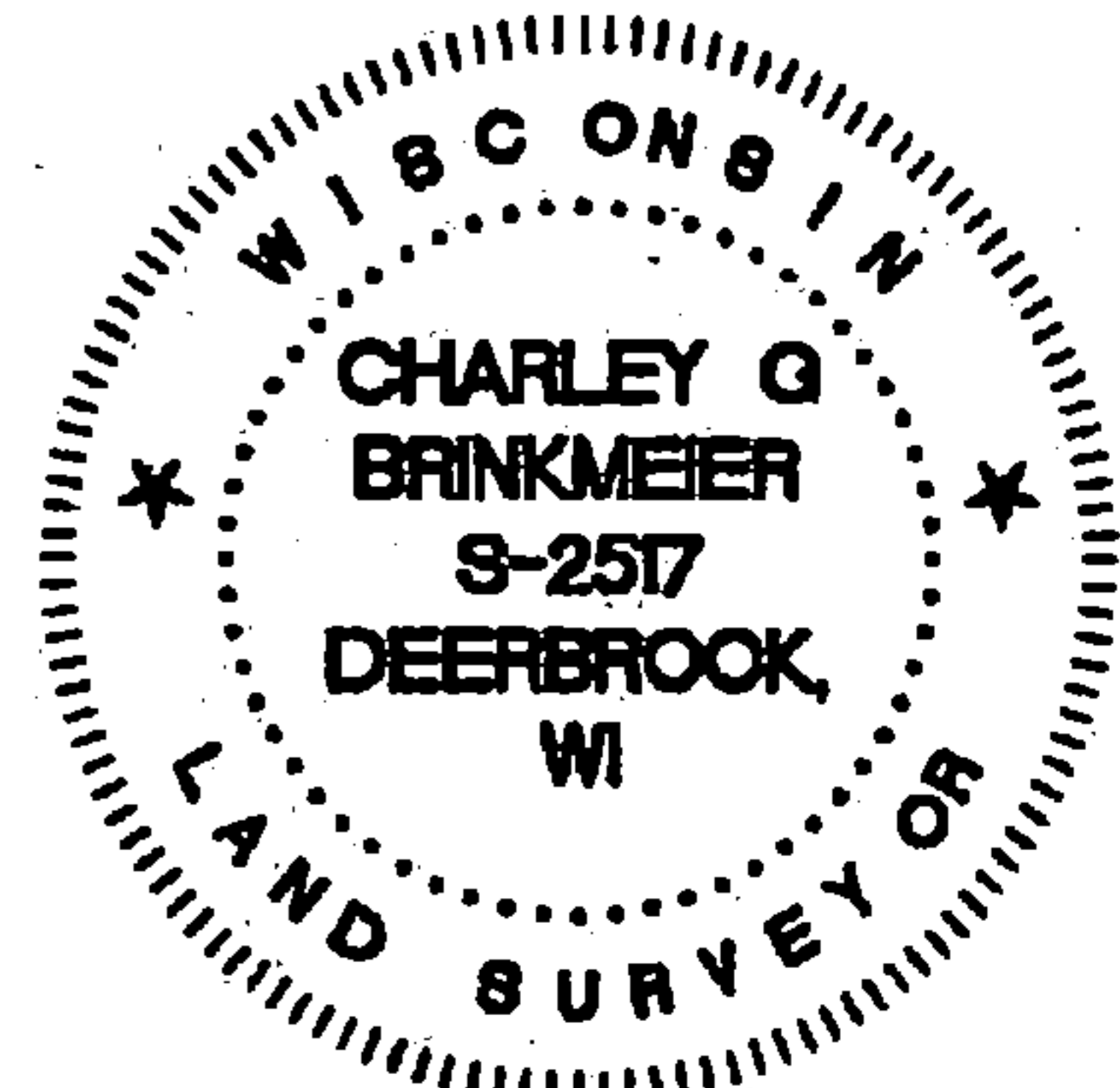
D. Tlusty
11/20/18

CHARLEY G. BRINKMEIER

(Type or print name) CERTIFY THAT THE CORNER LOCATION SHOWN ON THIS RECORD WAS DETERMINED BY ME OR UNDER MY DIRECTION AND CONTROL AND THAT THIS U.S. PUBLIC LAND SURVEY MONUMENT RECORD IS CORRECT AND COMPLETE TO THE BEST OF MY KNOWLEDGE AND BELIEF.

[Signature]
SIGNATURE

11-11-18
DATE



A-11 34-12 INDEX NO.

2-11

43512330020