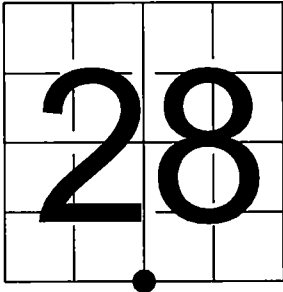


U.S. PUBLIC LAND SURVEY
MONUMENT RECORD

NOTE: This form is intended and designed to fulfill all requirements of Wisconsin Administrative Code, Chapter A-E 7.08 U.S. Public Land Survey Monument Record (3) (a-i)

A-E 7.08(3)(a) Identity of corner:
South 1/4 Corner Section 28,
Township 35 North, Range 12 East
of the Fourth Principal Meridian,
Town of Nashville, Forest County, Wisconsin

WISCRS - FOREST COUNTY
N: 537,578.490 USft (XXX,XXX.XXX)
E: 812,310.671 USft (XXX,XXX.XXX)
Datum: NAD83 (2011)
GNSS Method RTN
GNSS Control WISCORS VRS



The coordinate value shown has been verified by the average of two or more GPS observations at a markedly different time. Coordinates shown in parenthesis are previously published values.

A-E 7.08(3)(b)
Original Surveyor: J.L. Knowlin - June 1865 - July 7, 1865
W. Pine 12 - S 27° E, 35 Links, Y. Pine 20 - N 34° W, 60 Links
THENCE:

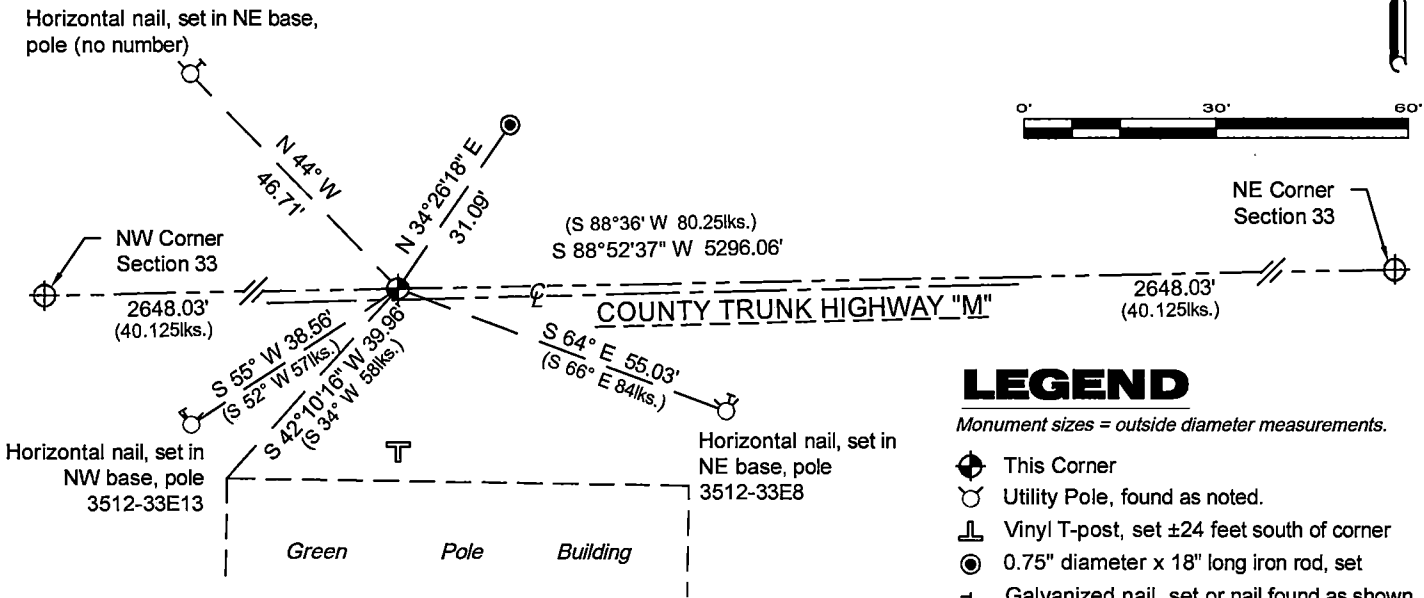
- May - June, 1983 - Cadastral Surveyor - Richard J. Widmar - prepared a "Corrective Dependent Resurvey of a Portion of Subdivisional Lines, Township 35 North, Range 12 East", indicates this position as "a Copperweld set, 5 ins. below the surface of blacktop County M, running E. and W., with a bronze cap". Note: Cap is marked to identify the corner location. Widmar used 4 reference monuments from a previous cadastral surveyor, and established 1 new reference monument. Widmar references the following:
"NE. cor. of a green building, bears S.34°W., 58lks. dist." (38.28')
"telephone pole, bears S.52°W., 57lks. dist., with spike in base." (37.62')
"power pole, bears S.66°E., 84lks. dist., with spike in base." (55.44')
- July 28, 2008 - Surveyor 2517 - Charley G. Brinkmeier - indicates this position as "set PK nail" on Certified Survey Map #198250.

January 10, 2025 - I made a careful search of the area and found no evidence of the copperweld set by Widmar, or the P.K. nail set by Brinkmeier.

July 21, 2025, I returned to the location and found a "green building" located to the south of the computed corner location, as well as 2 newer utility poles on the south side of County Trunk Highway "M".
I did not find any spikes in the newer utility poles, and the reference to the NE corner of the green building appears to be incorrect (NW corner of the green building makes better sense), but the bearings and distances from the point calculated from the Brinkmeier CSM to each feature, as well as the distance to the opposing section corners match those cited in the 1983 notes (within reason).
Note: Widmar's notes state that Swamp Creek is 5.87 chains west of the corner (387.75').
The distance from this corner to the east edge of Swamp Creek is ±787'.

I set a Berntsen Survey Mark steel spike, ±2' north of the County Trunk Highway "M" center line, and at the midpoint of a straight line between the NE and NW corners of Section 33.
I established 4 new reference monuments as shown below.

A-E 7.08(3)(c)(d) Plan view of corner with references to at least 4 witness monuments.



A-E 7.08(3)(e) 1865 Surveyor set a post, 1983 Surveyor reset a Copperweld 2008 Surveyor set a PK nail, I set a Berntsen Survey Mark steel spike in 2025.

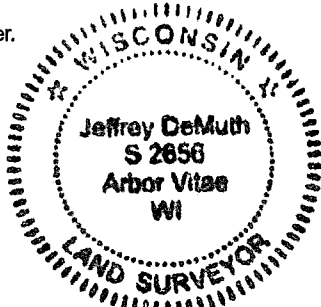
A-E 7.08(3)(f) I accept this monument in good faith as a FOUND PERPETUATED LOCATION of the corner.
A-E 7.08(3)(g)(h) This corner was previously determined through lost-corner-proportionate methods.

A-E 7.08(3)(i) I, Jeffrey L. DeMuth, Professional Land Surveyor No. S-2656, hereby certify that the corner location on this record was determined by me or under my direction and control, and that this U.S. Public Land Survey Monument Record is correct and complete to the best of my knowledge, and belief.

SIGNATURE

July 29, 2025

DATE



43512280020

43512280020

VII