

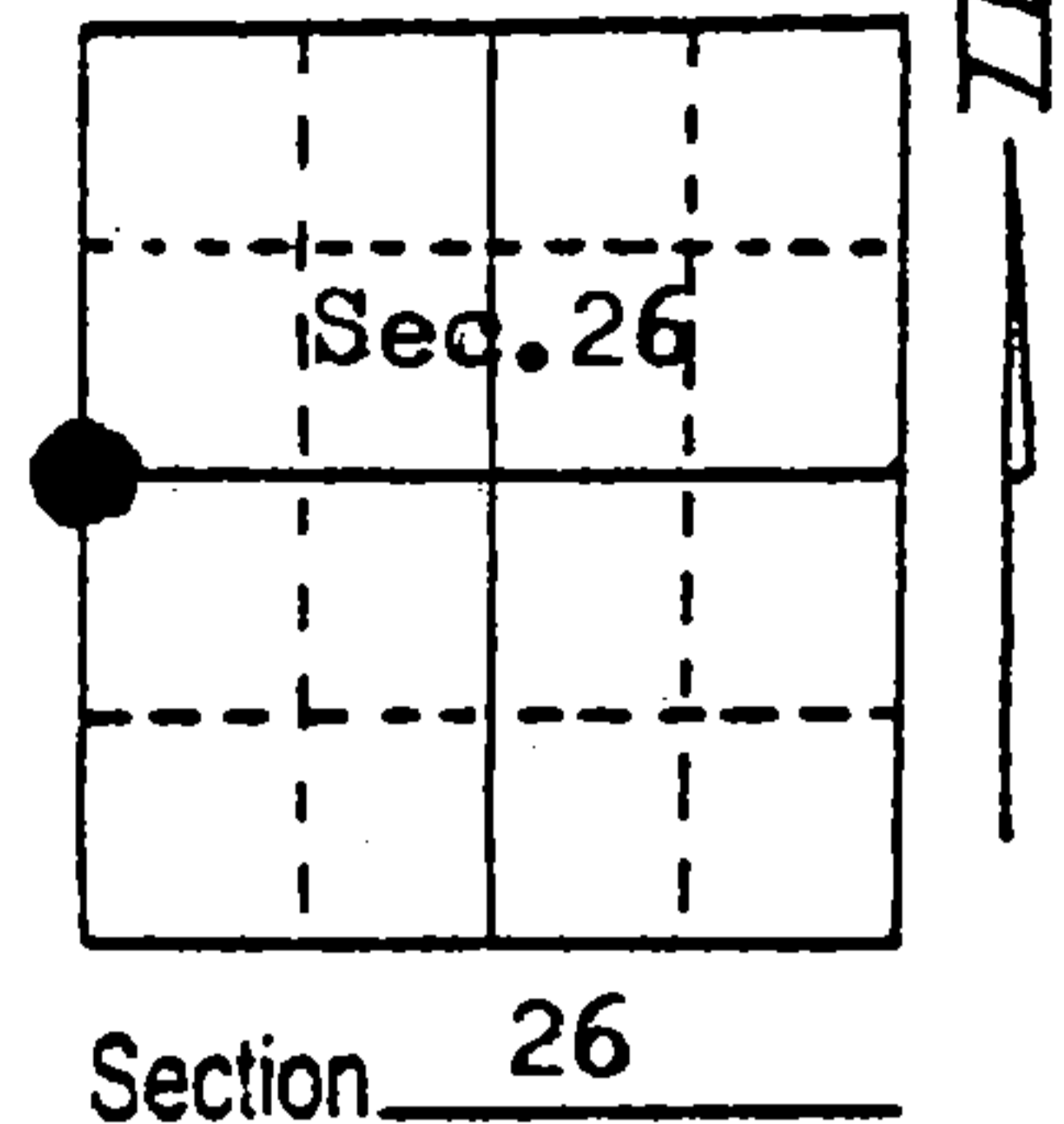
U.S. PUBLIC LAND SURVEY MONUMENT RECORD

Note: This form is intended and designed to fulfill all requirements of Wisconsin Administrative Code, Chapter A-E 5.02, U.S. Public Land Survey Monument Record (3) (a) (b) (c) (d) (e) (f) (g) (h) (i). An additional sheet may be added if necessary to conform with said requirements.

(a) Corner location: Township 35 North
Range 12 East ~~West~~

Town/City/Village Nashville

County Forest



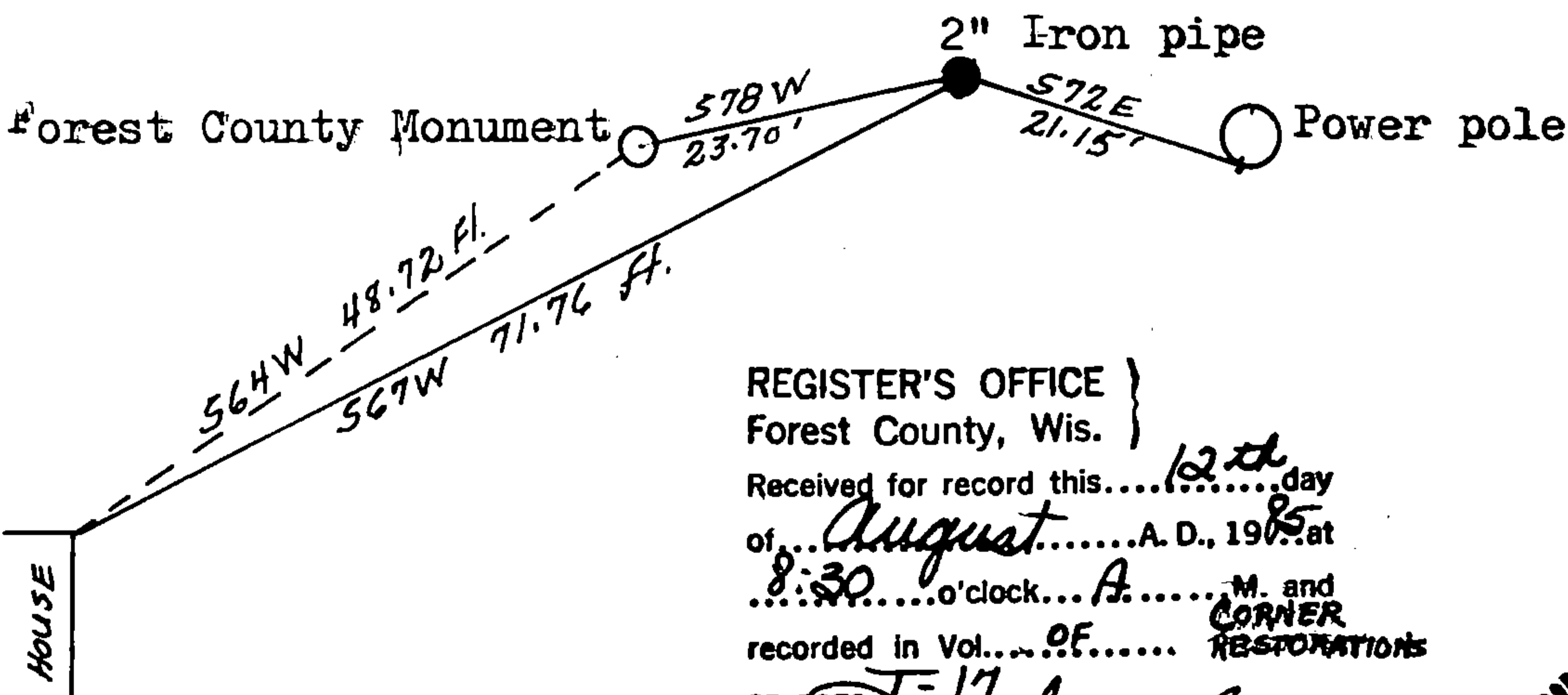
(b) (f) (g) (h) Description of monument found at this corner and if it was accepted, state all evidence (material, testimonial, occupational, plats, records, other monuments) used as a basis for accepting. If not accepted or if nothing was found, state evidence used as basis for establishing location. If reestablished through lost corner proportionate methods, indicate all monuments, distances and directions used to establish.

Corner Certificate filed Nov. 10, 1975 by Thomas Arnott

I found the 2" Diam. iron pipe in the road and the power pole bearing S72E, 21.15 feet from iron pipe. The Forest County Aluminum monument had been removed by water line construction.

I reset the Reference Monument at the recorded location of S78W, 23.70 feet from the quarter corner and added another witness. The Northeast corner of house bears S67W, 71.76 feet.

(c) (d) (e) Plan view of corner with ties to at least 4 witness monuments. If in disagreement with previously established corner, show the distances between the two corners and also indicate the ties to the disputed corner.



REGISTER'S OFFICE }
Forest County, Wis. }
Received for record this... 12th day
of... August... A. D., 1975 at
8:30 o'clock... A... M. and
recorded in Vol... OF... CORNER RESTORATIONS
on page... 17...
Paul Aschenbrenner
REGISTER



(i) I, Jean F. Resvick, RLS Number S-802
(type or print name) certify that the corner location on this record was determined by me or under my direction and control and that this U.S. Public Land Survey Monument Record is correct and complete to the best of my knowledge and belief.

Jean F. Resvick Signature
8-7-85 Date

43512272000

Index No. 117

CERTIFIED LAND CORNER RESTORATION

Index No. **T17**

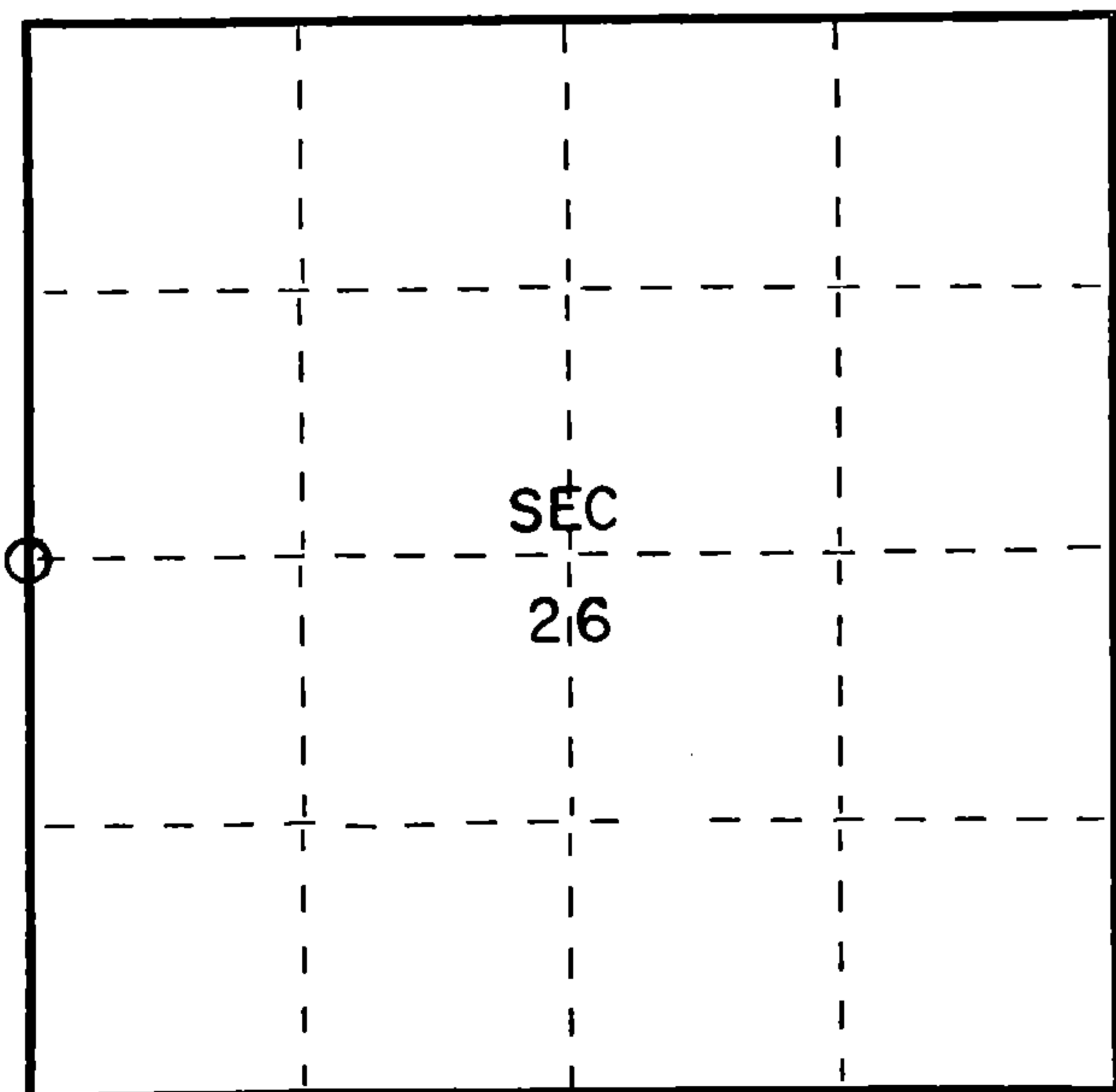
State of Wisconsin }
County of Forest } ss.

I Thomas R. Arnott, do hereby certify that on the 21st day of September, 1975, I found evidence of the 1/4 corner of sections 26 & 27 Township 35, North, Range 12 E, Fourth Principal Meridian, as described hereon; and that from this evidence I established a new monument and accessories as described hereon to perpetuate the original location of this corner.

Resident witnesses:

Herbert Wagoner

FORM 985 H. G. MILLER CO., MILWAUKEE



○ = Corner monument restored.

History of original corner establishment:

Original subdivision by James L. Nowlin June 26th - July 7, 1865

Y. Pine 12 S10E 47 Lks.
Y. Pine 16 S14W 75 Lks.

Description of corner evidence found:

2" iron pipe found in road



Description of monument and accessories I established to perpetuate the original location of this corner:

Left iron pipe found

Ties:

Forest County Aluminum monument S78W 23.70 feet
power pole S72E 21.13 feet

Dated at Grandon, Wis., this 10th day of November, 1975.

Signature Thomas Arnott Title Land Surveyor Registration No. S-887
(County Surveyor, Registered Land Surveyor, or other duly authorized official)

Office of Register of Deeds, County of Forest, I hereby certify that the within instrument was filed in this office for record on the 10th day of November, 1975 at 3 o'clock P M.

EUGENE STATEZNY
(Register of Deeds)

Document Number **108182**

By Eileen Schmidt Deputy

43512-272000