

225388

LAND CORNER PRESERVATION RECORD

It is the purpose of this record to preserve the location of a survey or land corner monument that may be disturbed, removed or inaccessible due to road construction or other activity.

| | | | | |
|-------------------|-----------------------------------|----------------|-------------------|-------------------|
| County: Forest | City, Town, Village: Nashville | Section: 13 | Town: 35 North | Range: 12 East |
|-------------------|-----------------------------------|----------------|-------------------|-------------------|

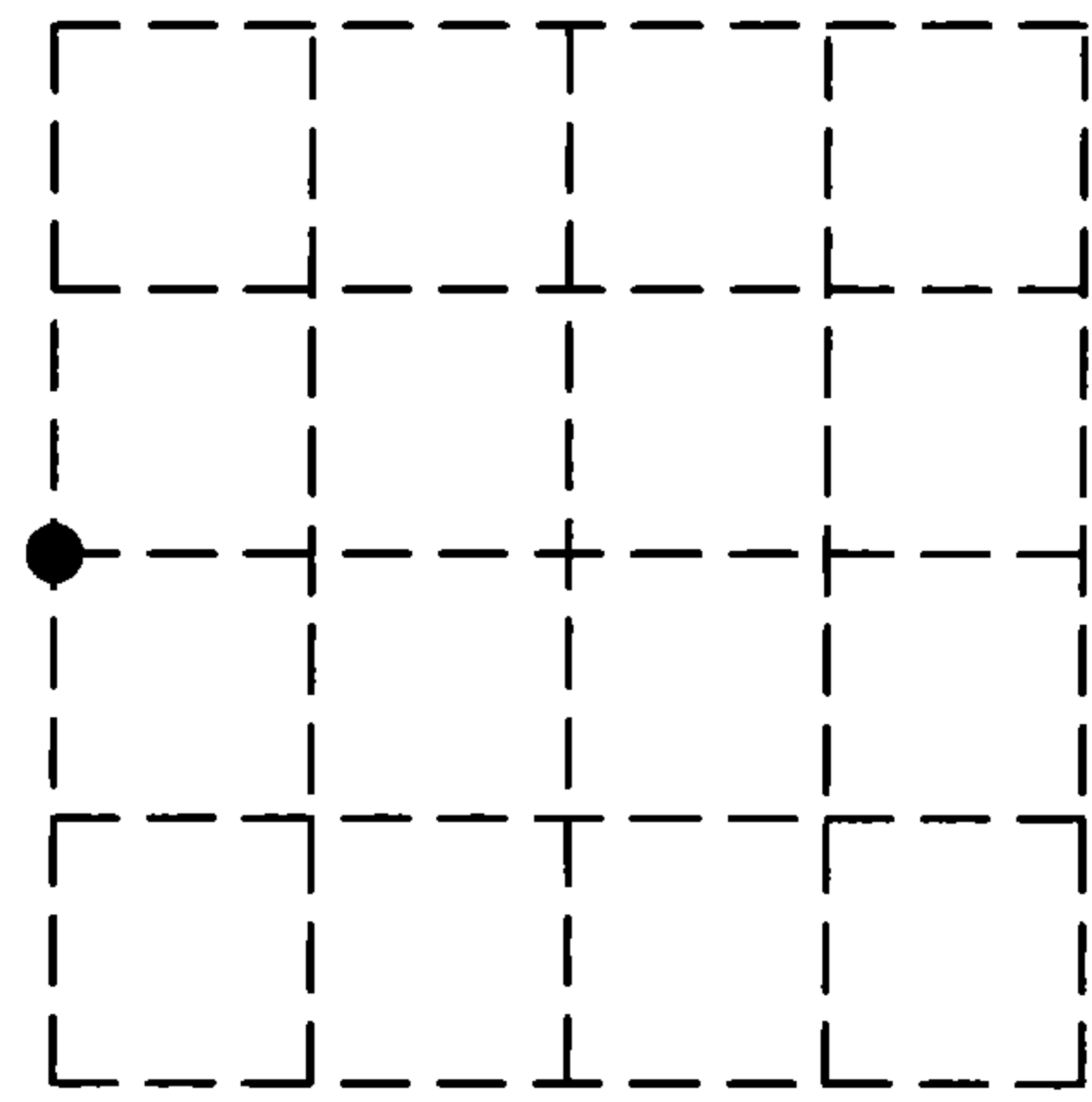
Describe what was found, its location and origin. If known, describe if the monument found is a 1/16 corner or other subdivisional corner; a monument called for in a deed; a monument shown on a survey map or plat etc and in what GL or 1/4 - 1/4 section or subdivision the monument is located.

July 1, 2017 - I found a 1 1/4" diameter iron pipe, 1' south of the centerline of Airport Road. Corner appears to match the West 1/4 corner as referenced on Certified Land Corner Restoration Form as indexed as L-21 in the Register of Deed's office at Forest County. I found & established the witnesses as shown in plan view map below.

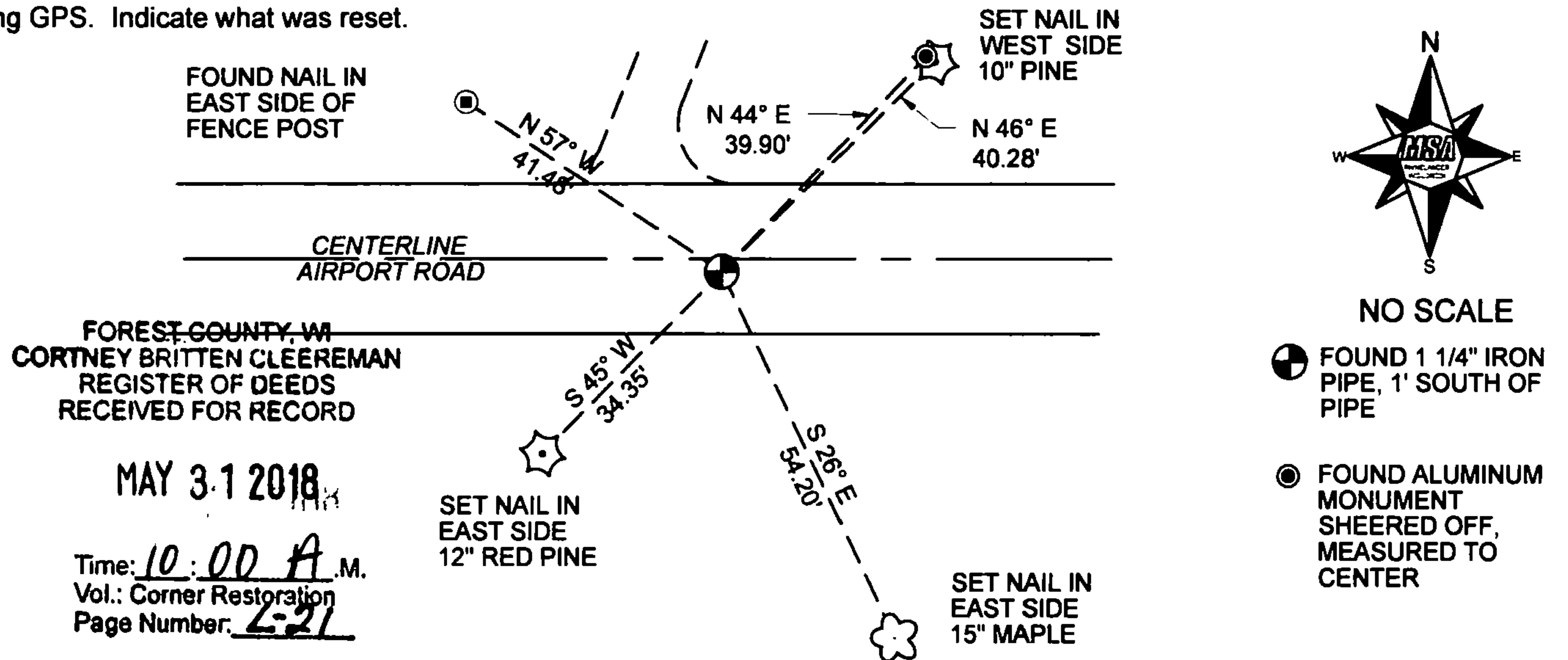
June 26 - July 7, 1865 - Original Surveyor James L. Nowlin
10" Birch, N11°E 10 LNKS
8" Fir, West 10 LNKS

November 10, 1975 - Thomas R Amott
Found 1 1/4" Iron Pipe and referenced as:
Aluminum Forest County Monument, N53°E 40.08 FEET
Power Pole, S22°E, 21.51 FEET

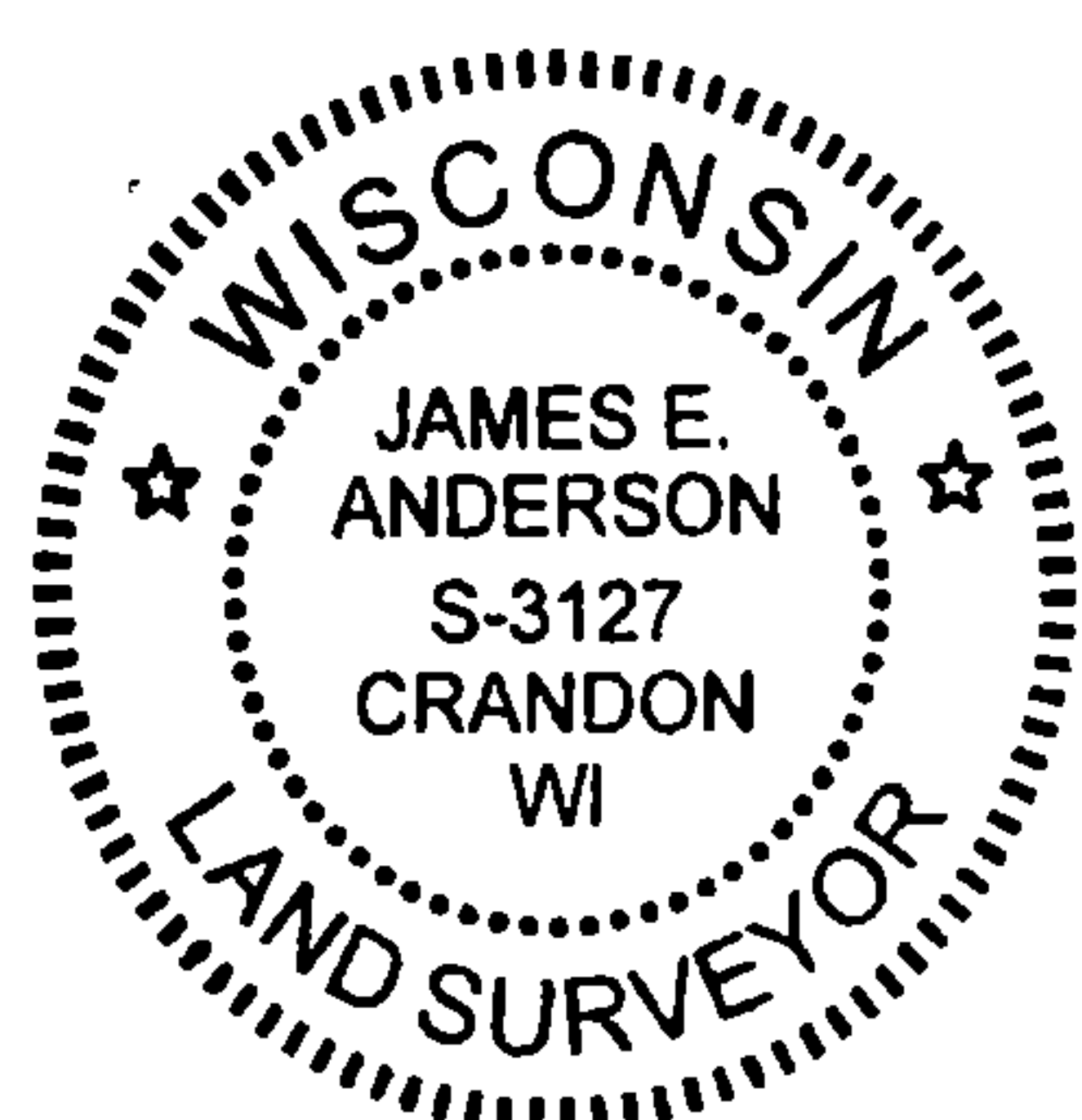
Approximate location within Section 13



Plan view map of landmark monument location with bearing and distance ties to a minimum of four described witness or reference monuments of concrete, natural stone, metal, live bearing trees or equivalent material or indicate datum & coordinates if tied out using GPS. Indicate what was reset.



Seal:



PROFESSIONAL LAND SURVEYOR CERTIFICATE:
This land corner was referenced out in advance of road construction or other activity as an act of preserving survey evidence or monuments. This corner has not been tested for its accuracy during the course of this preservation. It is recommended that those using the corner position evaluate and verify it prior to use in a survey or other use.

I hereby certify that I am a duly licensed Professional Land Surveyor in the State of Wisconsin; that the location of this Survey or Land Corner was referenced by me or under my direct supervision and control and that the information shown on this record is true and correct to the best of my knowledge and belief.

James E. Anderson
Signature

10/30/2017
Date

L-21

4351214 2000

CERTIFIED LAND CORNER RESTORATION

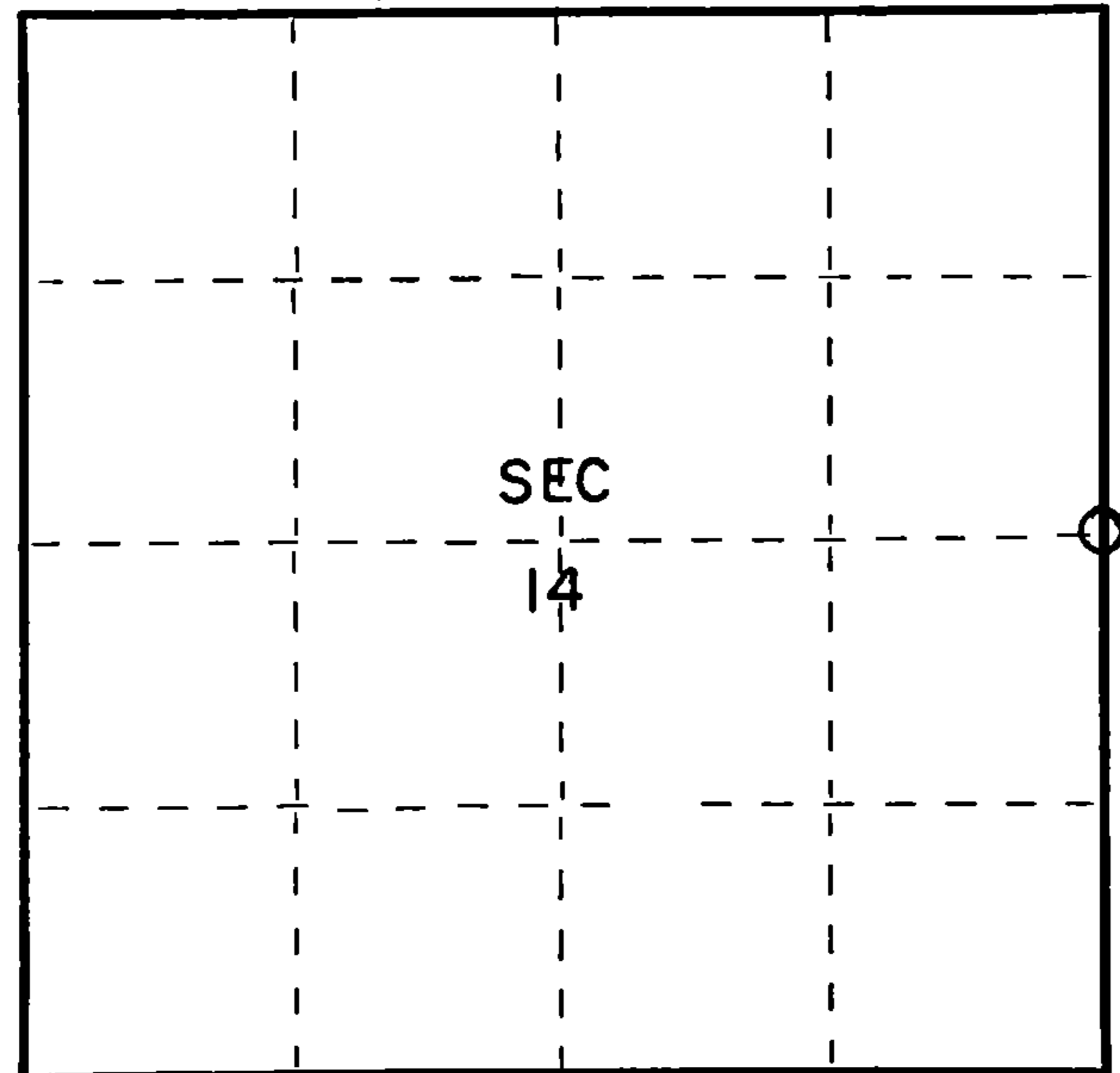
Index No. L-21

State of Wisconsin }
County of Forest } ss.

I Thomas R. Arnott, do hereby certify that on the 16th day of September, 1975, I found evidence of the 1/4 corner of sections 13 & 14 Township 35, North, Range 12 E, Fourth Principal Meridian, as described hereon; and that from this evidence I established a new monument and accessories as described hereon to perpetuate the original location of this corner.

Resident witnesses:
Herbert Wagoner

FORM 985 H. C. MILLER CO., MILWAUKEE



○ = Corner monument restored.

History of original corner establishment:

Original Subdivision by James L. Nowlin June 26 - July 7, 1865

Birch 10 N11E 10 Lks.
Fir 8 West 10 Lks.

Description of corner evidence found:

1 1/4" iron pipe found



Description of monument and accessories I established to perpetuate the original location of this corner.

Left 1 1/4" iron pipe found in place

Ties:

New Forest County aluminum monument N53E 40.08 feet
power pole (3512-13L1) S22E 21.51 feet

Dated at Crandon, Wis., this 10th day of November, 1975

Signature Thomas R. Arnott Title Land Surveyor Registration No. S-887
(County Surveyor, Registered Land Surveyor, or other duly authorized official)

Office of Register of Deeds, County of Forest, I hereby certify that the within instrument was filed in this office for record on the 10th day of November, 1975 at 3 o'clock P. M.

EUGENE STATEZNY Document Number 108181
(Register of Deeds)

By Eileen Schmidt Deputy

43512142000